

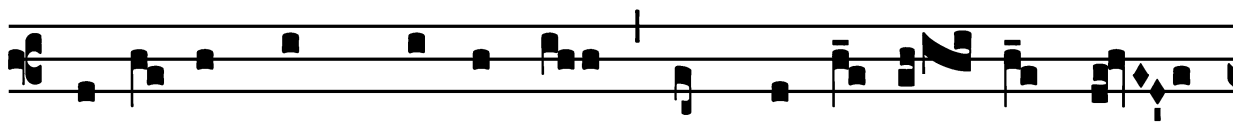
Votive Mass for Pilgrims and Travelers

*Introit*

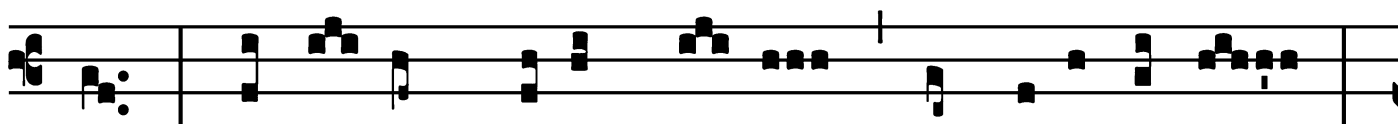
Intr.

2.

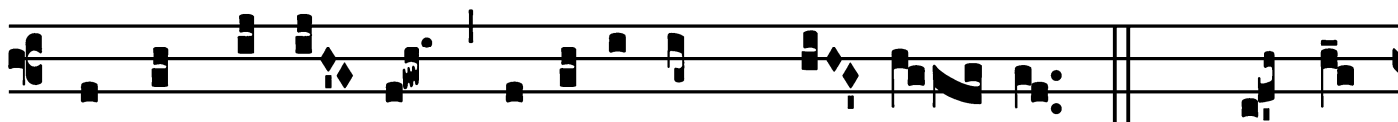
**R**



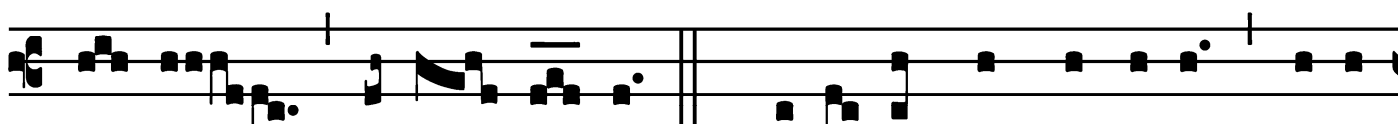
Edime me \* Dómi-ne, et mi-se-ré- re mé-



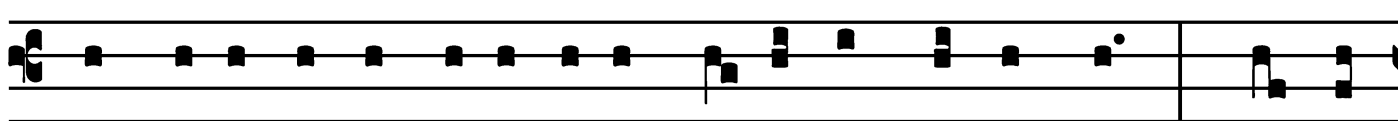
i : pes e- nim mé-us sté- tit in ví- a récta :



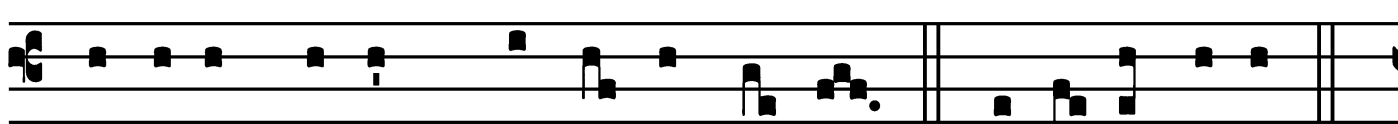
in ecclé-si- is benedí-cam Dó- mi- num. *T.P.* Al-le-



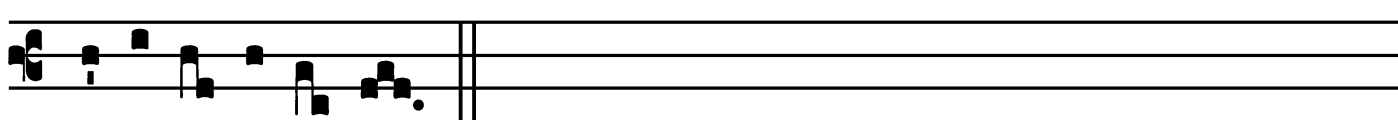
lú- ia, alle- lú- ia. *P.s.* Júdi-ca me Dómine, quóni-



am égo in innocénti- a mé- a ingrédus sum : \* et in



Dómino spé-rans, non in-firmá-bor. Gló-ri- a Pátri.



E u o u a e.

Votive Mass for Pilgrims and Travelers

*Gradual*

Grad.

1.

**S**

I ámbu- lem \* in mé- di- o úmbræ

mór- tis, non timé- bo má- la :

quóni- am tu mé- cum es, Dómine.

∞. Vír- ga tú- a, et bá-

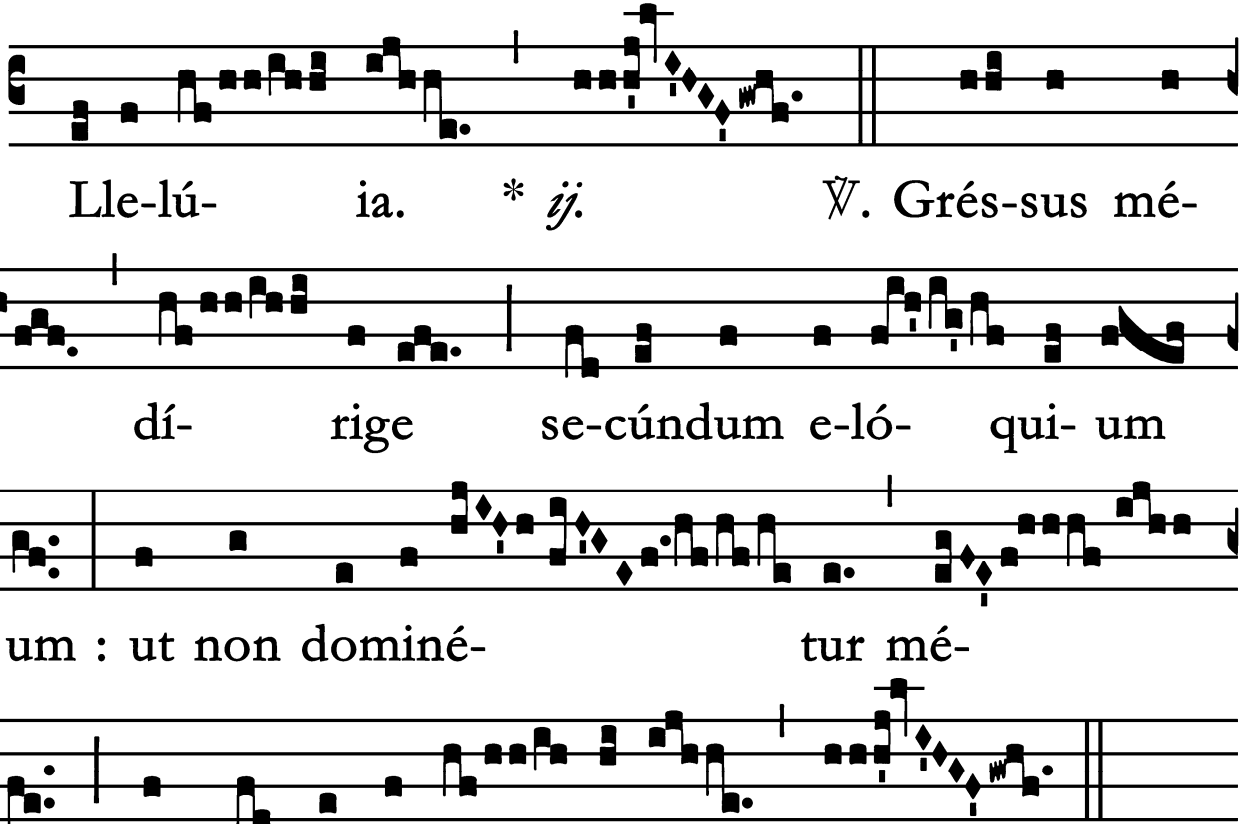
cu- lus tú- us, í- psa me

\* conso- lá- ta sunt.

Votive Mass for Pilgrims and Travelers

*Alleluia*

2.  
**A**



Lle-lú- ia. \* *ij.* V̇. Grés-sus mé-  
os dí- rige se-cúndum e-ló- qui- um  
tú- um : ut non dominé- tur mé-  
i \* ómnis injustí- ti- a.

Votive Mass for Pilgrims and Travelers

*Second Alleluia*

(In Paschal Time)

1.  
**A** Lle-lú-ia. \* V. Læ-

tá- tus sum in his quæ dí- cta sunt mí- hi : in

dó- mum Dó- mi- ni \* í- bi-

mus.

Votive Mass for Pilgrims and Travelers

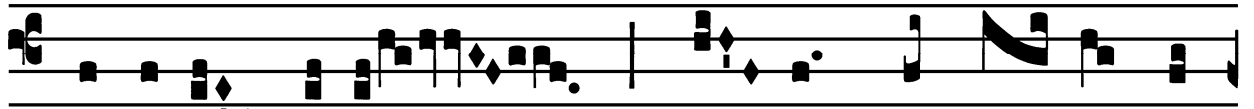
*Tract*

(After Septuagesima)

Tract.

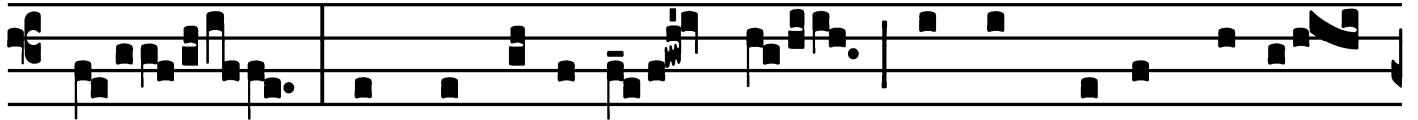
2.

**A**



Nge-lis sú-is

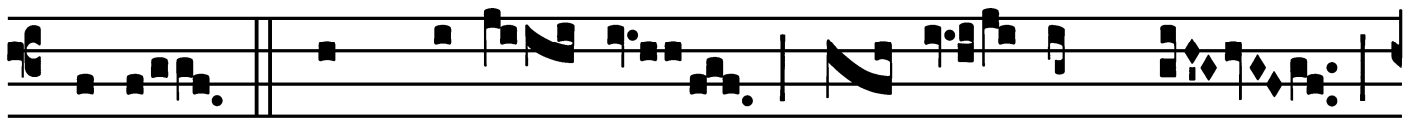
\* Dé-us mandá-vit de



te,

ut custódi-ant te

in ómnibus ví-is

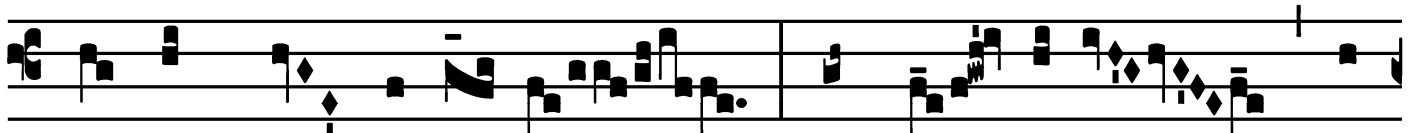


tú-is.

∇.

In máni-bus

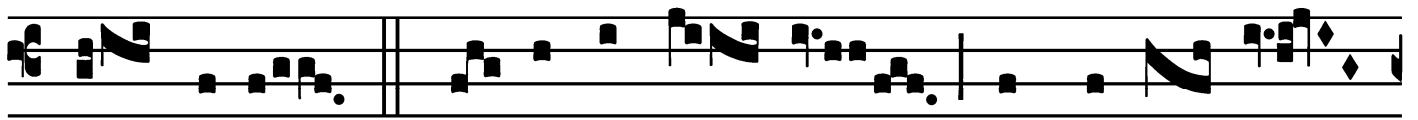
por-tá-bunt te,



ne unquam offéndas

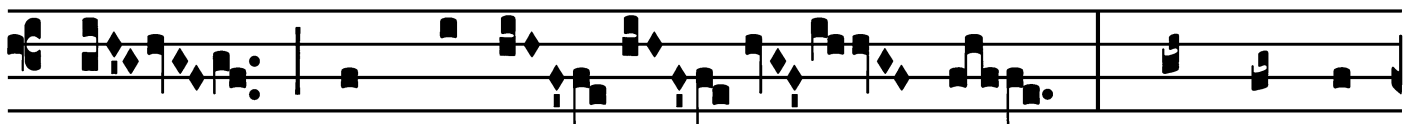
ad lá-pidem

pé-



dem tú-um. ∇. Su-per áspi-dem

et ba-si-lís-

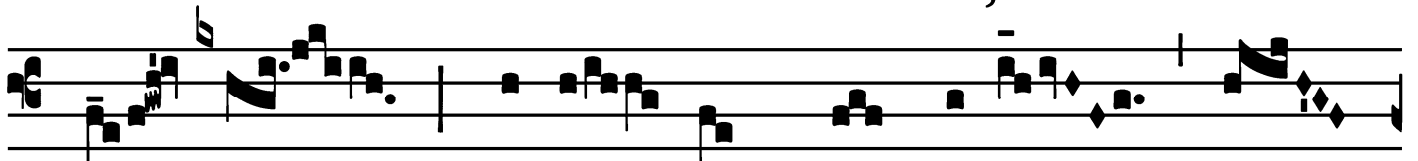


cum

ambu-lá-

bis,

et concul-

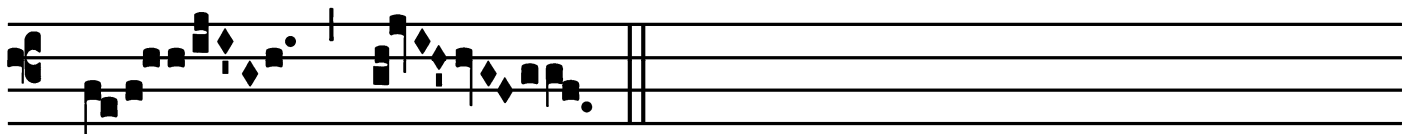


cá-bis

le-ó-

nem \*

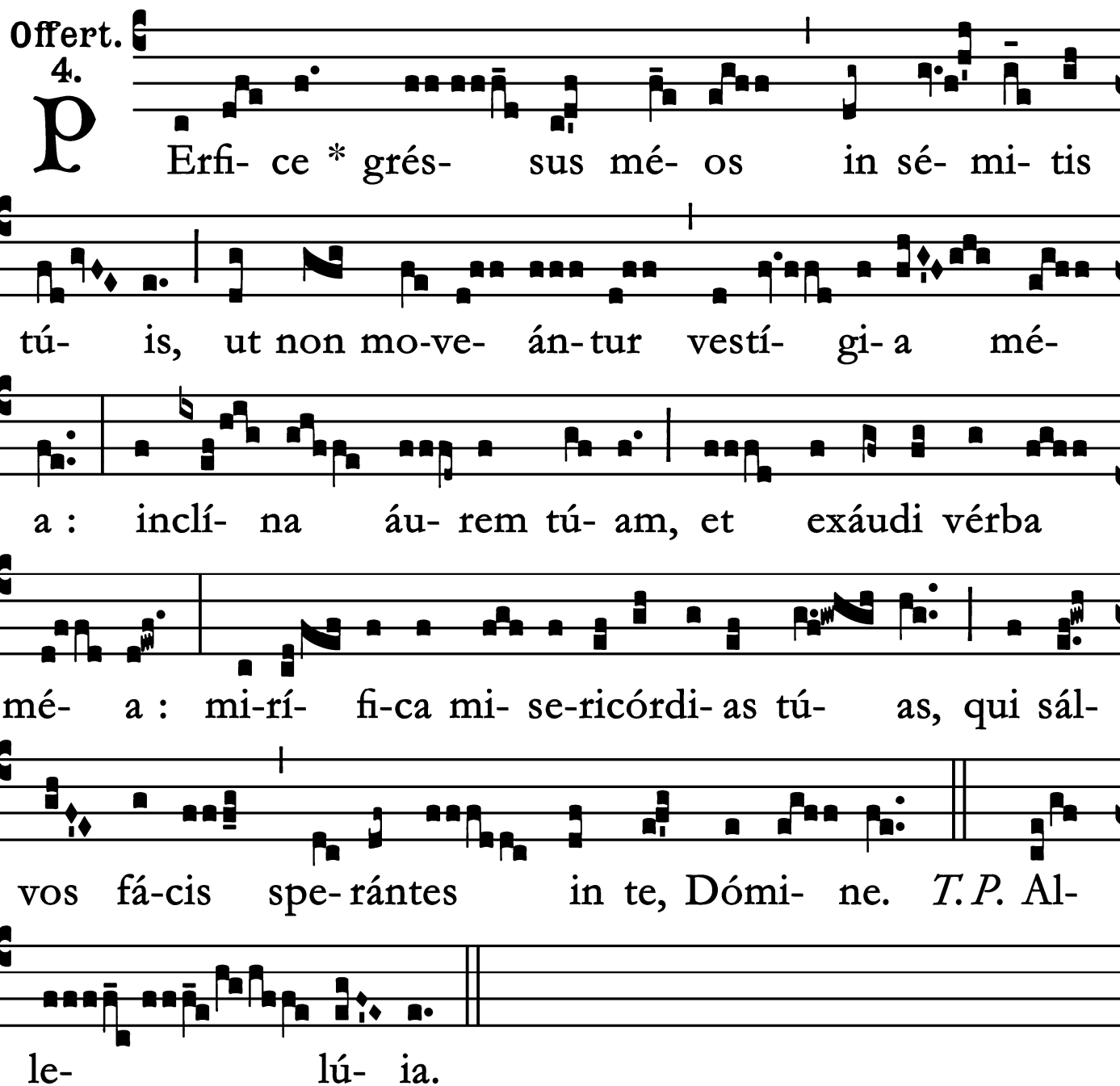
et dracó-



nem.

Votive Mass for Pilgrims and Travelers

*Offertory*

Offert. 

4.  
**P** Erfi- ce \* grés- sus mé- os in sé- mi- tis  
tú- is, ut non mo-ve- án-tur vestí- gi- a mé-  
a : inclí- na áu- rem tú- am, et exáudi vérba  
mé- a : mi-rí- fi-ca mi- se-ricórdi- as tú- as, qui sál-  
vos fá-cis spe-rántes in te, Dómi- ne. *T.P.* Al-  
le- lú- ia.

Votive Mass for Pilgrims and Travelers

*Communion*

Comm.

5.

**T**

U mandásti \* mandá- ta tú- a custo-dí- ri

ni-mis : ú-tinam di- rigántur ví- æ mé-æ, ad cu-

sto- di- én-das justi- fi-ca- ti- ó- nes tú- as.

*T. P.* Alle- lú- ia.

