

## Introit

Intr.

4.

**T**

Orcu-lar \* calcávi só- lus, et de géntibus non

est vir mé- cum : aspérsus est sán-guis e-ó- rum super

vestimén-ta mé- a, et ómni- a induménta mé-

a in-qui-ná- vi. Circumspé- xi, et non é- rat auxi-

li- á- tor : quæ-sí- vi, et non fú- it qui adju-

vá- ret. *Ps.* Sálvum me fac Dé-us : \* quó-ni- am intravé-

runt áquæ usque ad áni-mam mé-am. Gló-ri- a Pátri.

E u o u a e.

## Gradual

Grad.

5.

**D**

A-bo te \* in sánguinem fu-ró- ris et zé-

li, et denudá-bunt te vestiméntis tú-

is, et áufe-rent vá- sa de- có- ris tú-

i, et congre-gá-bo inimí- cos super te úndi-

que.  $\checkmark$ . Et requi-é- scet indigná-ti- o

mé- a in te, et qui-é- scam,

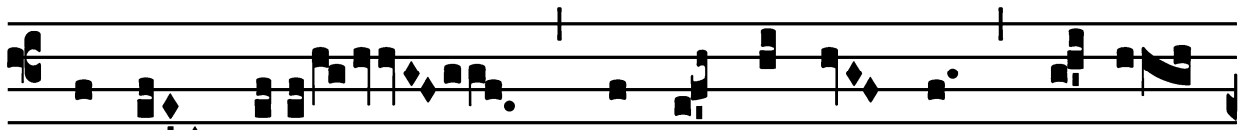
nec i-rá- scar \* ámpli- us.

Tract

Tract.

2.

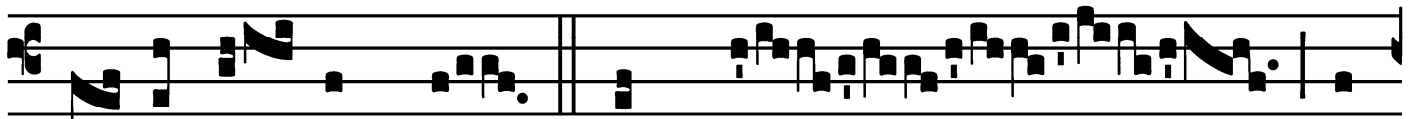
**S**



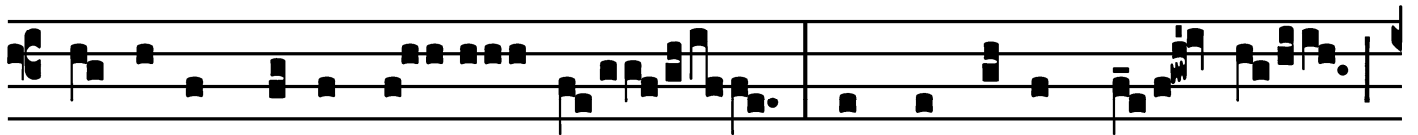
Uper me \* confirmá-tus est fú-ror



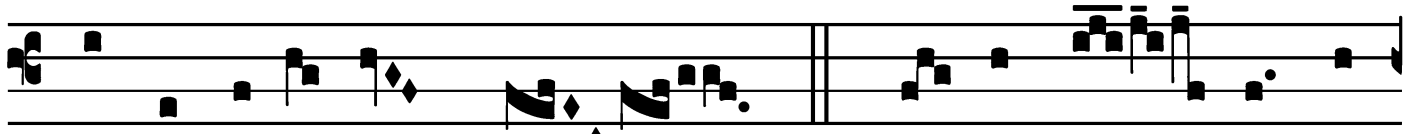
tú-us, et ómnes flúctus tú- os indu-



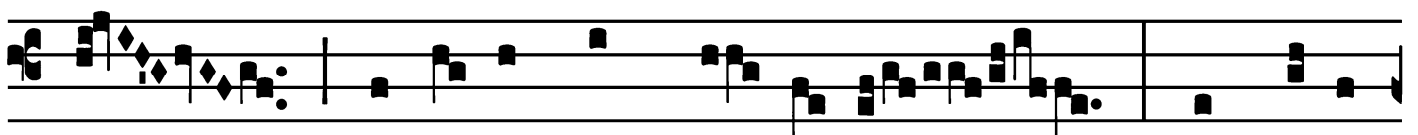
xí-sti su- per me.  $\checkmark$ . In me tran-



si- érunť iræ tú- æ, et terróres tú- i



conturbavé-runt me.  $\checkmark$ . E- longá- sti a



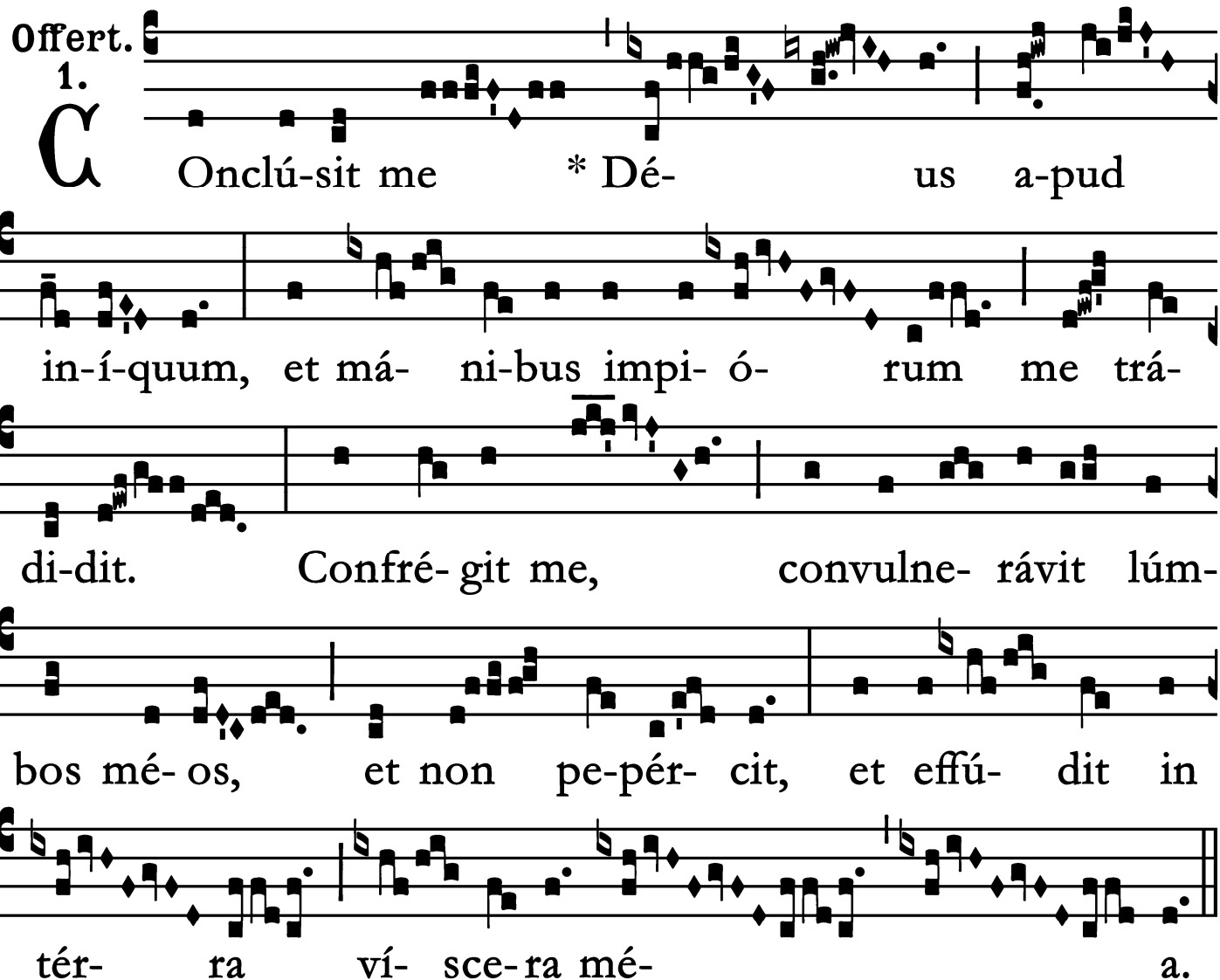
me amí-cum et pró- ximum, et nótos



mé- os \* a mi- sé- ri- a.

## Offertory

Offert. 1.



Onclú-sit me \* Dé-us a-pud  
in-í-quum, et má-ni-bus impi-ó-rum me trá-  
di-dit. Confré-git me, convulne-rávit lúm-  
bos mé-os, et non pe-pér-cit, et effú-dit in-  
tér-ra ví-sce-ra mé-a.

## Communion

Comm.

7.

**F**

Actus est \* oppróbri-um vi-cí- nis sú- is : ex-

al-tá- sti déxte-ram deprimén-ti-um é- um, læ-ti-

fi-cá- sti ómnes in-imí-cos é- jus : avertí-sti adju-

tó-ri-um gládi- i é-jus, et non es auxi- li- á-

tus é- i in bél-lo.

