

Votive Mass for the Chair of St. Peter

Introit

Intr.

1.

S

Tá-tu-it * é-i Dó-mi-nus te-staméntum

pá-cis, et príncipem fé-cit é-um : ut sit íl-li sa-

cerdó-ti-i dígni-tas in æ-tér-num. *T.P.* Alle-

lú-ia, alle-lú-ia. *Ps.* Meménto Dómine Dá-vid : *

et ómnis mansu-e-tú-dinis é-jus. Gló-ri-a Pátri.

E u o u a e.

Votive Mass for the Chair of St. Peter

Gradual

Grad.

5.

G

X-ál-tent é- um * in ecclé- si- a

plé- bis : et in cáthedra se-ni-

ó- rum láudent é- um.

∇. Confi-te- án- tur Dómi-

no mi-se-ri-córdi-æ

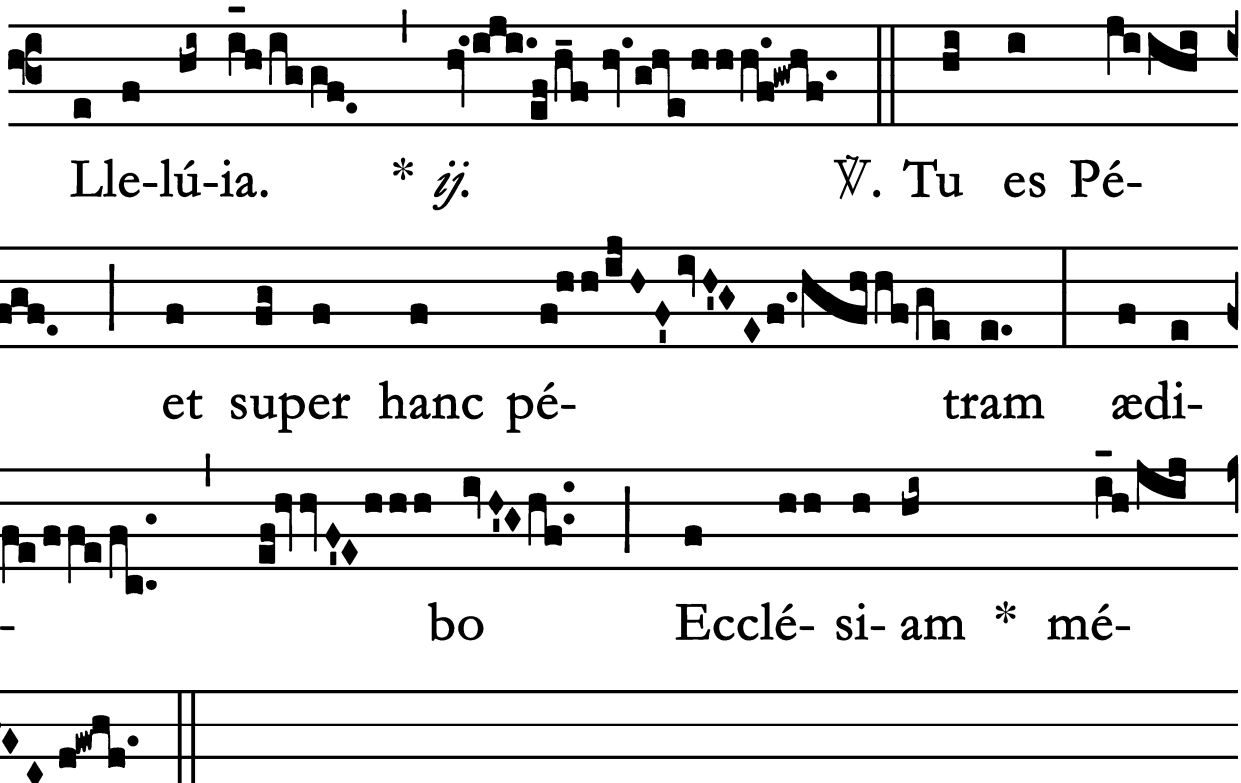
é- jus : et mi- rabí-

li- a é- jus fí- li- is * hómi-num.

Votive Mass for the Chair of St. Peter

Alleluia

2.
A



Lle-lú-ia. * *ij.* *Ÿ.* Tu es Pé-
trus, et super hanc pé- tram ædi-
fi-cá- bo Ecclé- si- am * mé-
am.

Votive Mass for the Chair of St. Peter
Alleluia
(In Paschal Time – In place of the Gradual)

8.
A

L-le- lú- ia. * *ij.* V. Con-
fi-te-ántur DÓ- mi-no mi-se-ri-cór-di-æ e-
jus, et mi- ra-bí-li- a e-
jus fí- li- is * hómi- num.

In Paschal Time, the verse "Alleluia. Tu es Pétrus" follows.

Votive Mass for the Chair of St. Peter

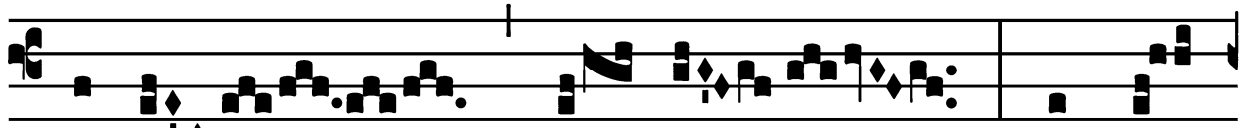
Tract

(After Septuagesima – Page 1 of 2)

Tract.

2.

T



U es

* Pé- trus,

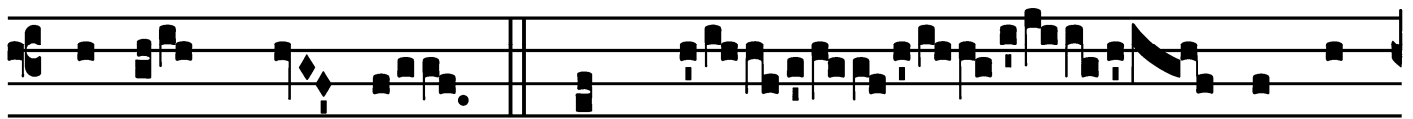
et su-



per hanc pé-tram

ædi- fi- cá- bo

Ecclé-



si- am mé- am. \forall . Et pór-

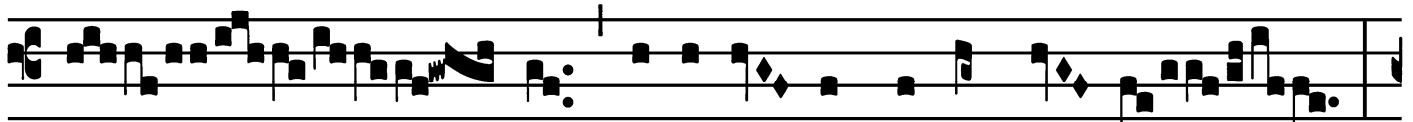
tæ ín-



fe- ri non præva- lébunt advérsus é- am :



et tí-bi dá- bo cláves régni cœ- ló- rum. \forall . Quod-



cúm- que ligáve- ris super tér- ram,



é-rit ligá- tum et in cœ- lis. \forall . Et quodcúm-

Votive Mass for the Chair of St. Peter

Tract

(Page 2 of 2)

que sólve- ris super

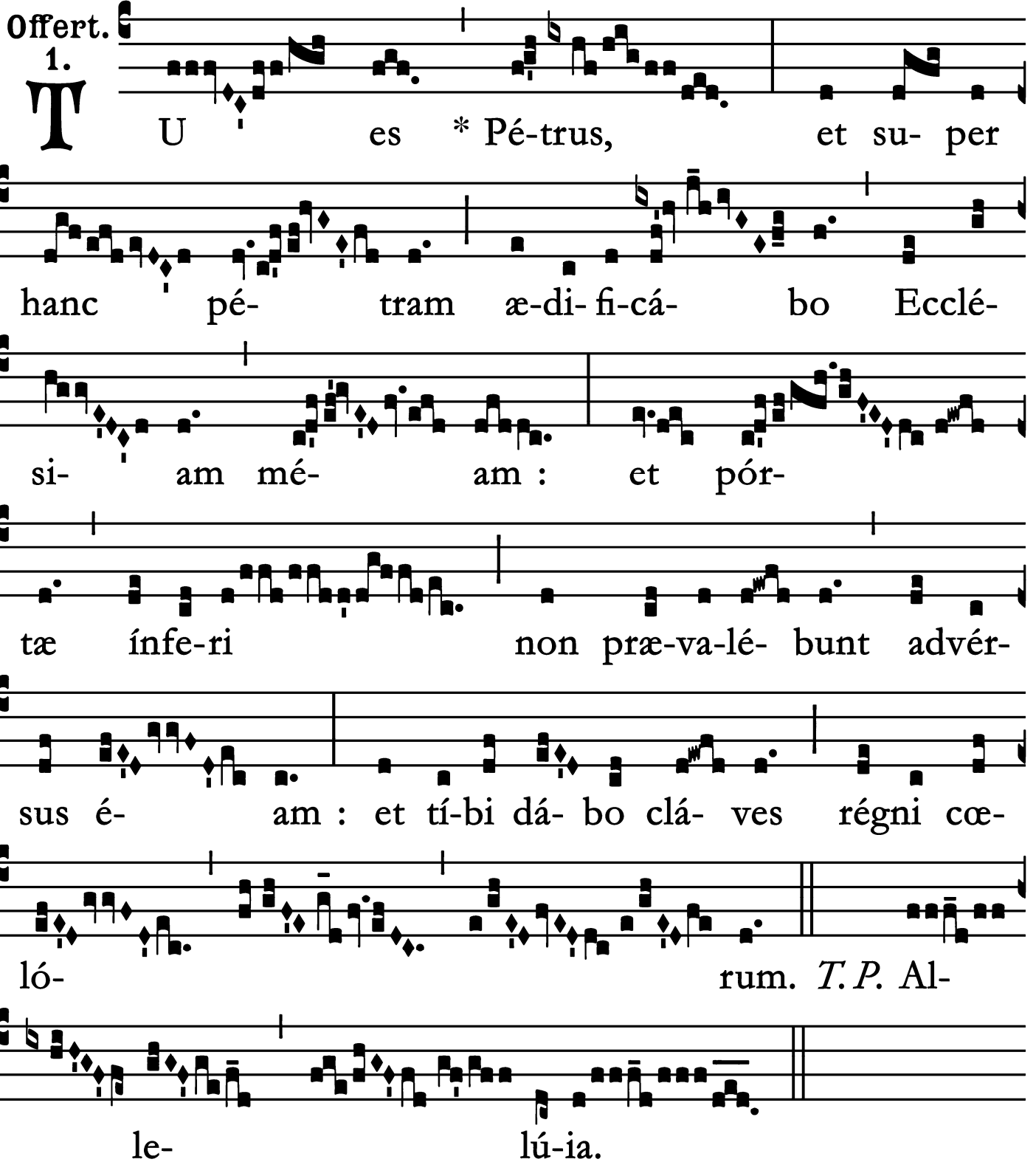
tér- ram, é-rit so-lú- tum et

in * cœ- lis.

Votive Mass for the Chair of St. Peter

Offertory

Offert. 1.



T U es * Pé-trus, et su-per
hanc pé-tram æ-di-fi-cá-bo Ecclé-
si-am mé-am : et pór-
tæ ínfe-ri non præ-va-lé-bunt advér-
sus é-am : et tí-bi dá-bo clá-ves régni cœ-
ló-rum. *T. P.* Al-
le-lú-ia.

Votive Mass for the Chair of St. Peter

Communion

Comm. 6. **T** U es Pé- trus, * et su- per hanc pé- tram ædi-
fi- cábo Ecclé- si- am mé- am. *T.P.* Alle- lú- ia.

