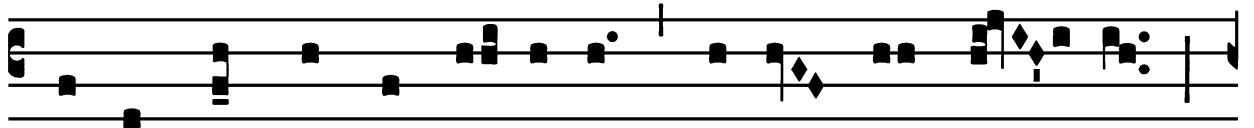


## Introit

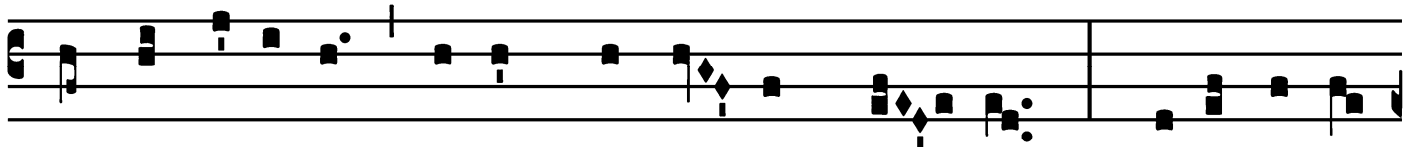
Intr.

5.

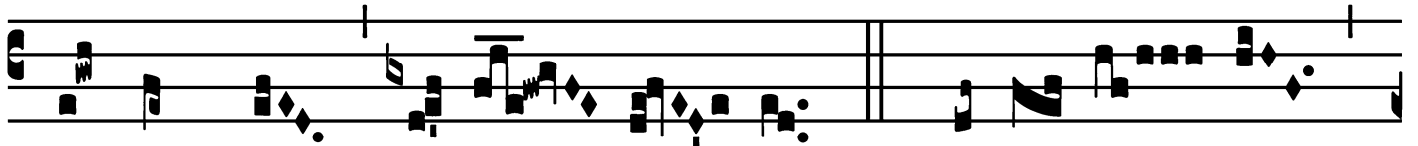
**P**



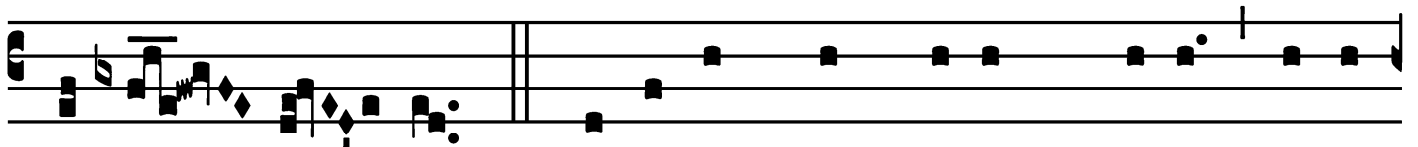
One me \* ut signá-cu-lum super cor tú- um,



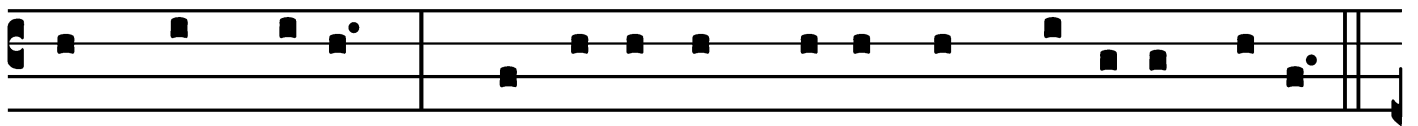
ut signácu-lum super bráchi- um tú- um : qui- a fórtis



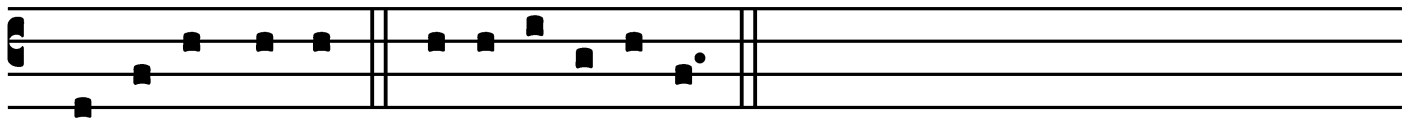
est ut mors di- lé- cti- o. *T.P.* Alle- lú- ia,



al-le- lú- ia. *Ps.* Pa-rá-tum cor mé-um, Dé-us, pa-rá-



tum cor mé-um : \* cantábo et psállam in gló-ri- a mé-a.



Gló-ri- a Pátri. E u o u a e.

Feast of St. Madeleine-Sophie Barat, Virgin – May 25

*Gradual*

(Outside Paschal Time)

Grad.

1.

**Q**

Uæ-sí- vi \* sapi- én-ti- am pa- lam in ora-

ti- ó- ne mé- a : ambu-lá- vit pes

mé- us í- ter ré- ctum, a juventú- te

mé- a a investigá- vi \* é- am.

∞. Dánti mí- hi

sapi- én- ti- am dá-

bo \* gló- ri- am.

Feast of St. Madeleine-Sophie Barat, Virgin – May 25

# Alleluia

(Outside Paschal Time)

8.  
**A** L-le- lú- ia. \* *ij.* V̇. E- go  
au- tem in Dó-mino gaudé- bo, et ex-  
sultá-bo in Dé- o \*  
Jé-su mé- o.

Feast of St. Madeleine-Sophie Barat, Virgin – May 25

*Alleluia*  
(In Paschal Time)

8.  
**A** L- le- lú- ia. \* *ij.*

Ÿ. Mí- hi autem adhæré- re Dé- o bó- num

est : pó- ne-re in Dómi-no Dé-o spem \* mé-

am.

Feast of St. Madeleine-Sophie Barat, Virgin – May 25

## Second Alleluia

(In Paschal Time)

7.  
**A** Lle-lú- ia. \*

∩. Exsultá- vit cor mé- um in Dó- mi- no,

et ex-altá-tum est córnu mé- um \* in

Dé- o mé- o.

# Offertory

Offert.

4.

**A**

F-fe-réntur \* ré-gi vír-gi-nes : pró-ximæ

é-jus affe-rén-tur tí-bi in læ-tí-ti-a

et exsulta-ti-ó-ne : addu-cén-tur in tém-

plum ré-gi Dó-mi-no. *T. P.* Al-le-

lú-ia.

Feast of St. Madeleine-Sophie Barat, Virgin – May 25

## Communion

Comm.  
5.



**Q** UI suscépe-rit \* únum párvu-lum ta- lem in nómi-  
ne mé-o me súsci- pit. *T.P.* Alle- lú- ia.

Proper Feasts kept in the Dioceses of  
The United States of America  
Desclee & Co., 1961 (amended 1963)  
Supplement to the Liber Usualis, No. 801

