

Introit

Intr. 4.
F Lé- bam * su- per é- um qui af- flí- ctus é- rat, et
compa- ti- ebá- tur á- nima mé- a páu- pe- ri : qui- a
ab infán- ti- a mé- a crévit mé- cum mi- será- ti- o et
de ú- te- ro mátris mé- æ egrés- sa est mé-
cum. *T. P.* Alle- lú- ia, alle- lú- ia. *Ps.* Be- á- tus qui
intélli- git super egé- num et páu- pe- rem : * in dí- e má- la libe-
rábit é- um Dóminus. Gló- ri- a Pátri. E u o u a e.

Gradual

Grad.

2.

C

Onclúde * e-le-emó- sy-nam in cór- de

páu- pe- ris, et hæc pro te exo-rá-

bit ab ó- mni má- lo.

∇. Pánem tú-um cum e-su-ri-én-

ti-bus et egé- nis cóm-

e- de, et de vestiméntis tú- is

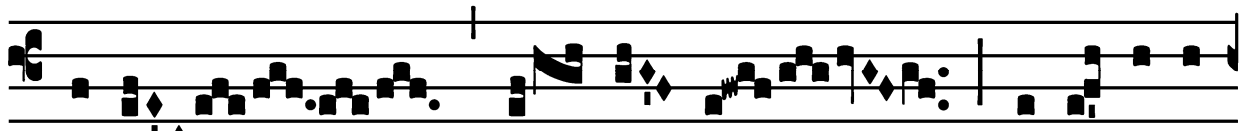
* nú- dos té- ge.

Tract

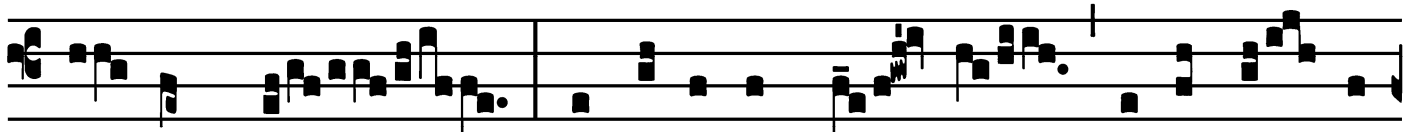
Tract.

2.

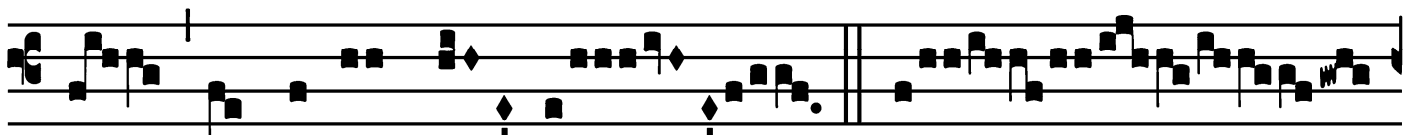
A



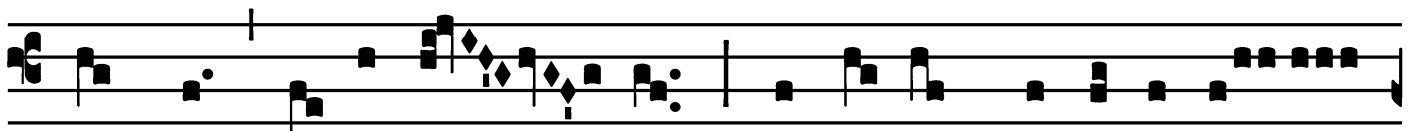
Uris * áu- di- ens be- a- ti- fi-



cá- bat me, et ócu- lus ví- dens testimó- ni-



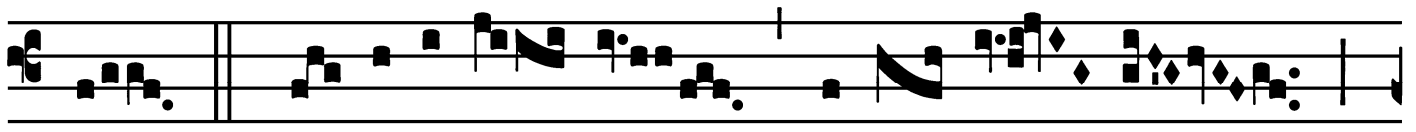
um reddébat mí- hi. V̇. E-



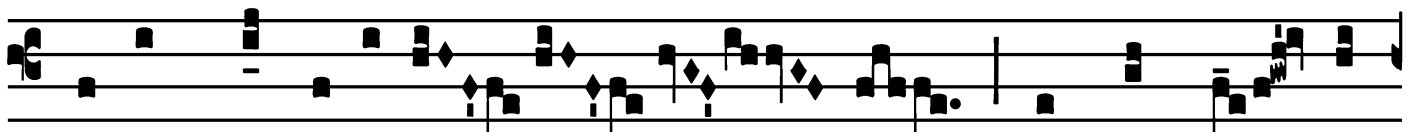
o quod li- be- rás- sem páu- pe- rem vo- ci- fe- rán-



tem, et pupíl- lum cú- i non ésset ad- jú-



tor. V̇. Be- nedícti- o per- i- tú- ri



super me veni- é- bat, et cor ví- du-



æ * con- so- lá- ta sum.

S. Ludovicæ de Marillac, Viduæ - Die 15 Martii

Alleluia
(Tempore Paschali)

7.
A Lle- lú-ia. * *ij.*

Ÿ. Ex-audí- ta est o-rá- ti- o tú- a,

et e-le-emó- synæ tú- æ commemo-rá- tæ sunt

* in conspé-ctu Dé- i.

S. Ludovicæ de Marillac, Viduæ - Die 15 Martii

Second Alleluia

(Tempore Paschali)

1.
A L- le- lú- ia. *

∇. Hæc é- rat pléna opé-ribus bó-nis, et e-le-
emó- synis * quas fa- ci-
é- bat.

Offertory

Offert. 4.

O - ra-ti-ó-nes tú- æ, * et e-le-emó-sy-næ
tú- æ ascendé- runt in memó- ri-am in con-
spé- ctu Dó- mi-
ni. *T. P.* Al-le- lú- ia.

S. Ludovicæ de Marillac, Viduæ - Die 15 Martii

Communion

Comm.

5.

D

I-lá- ta ló- cum * tentó-ri- i tú- i : lóngos fac

funí- cu- los tú- os; ad déxte-ram e-nim et ad læ- vam

pe-ne- trá- bis : et sémen tú- um géntes hære-

di- tá- bit. *T. P.* Alle- lú- ia.

Offices Propres du Diocèse de Paris
Desclée et Socii, 1926.
Supplement to Paroissien Romain No. 800.
Melodies edited by the Benedictines of Solesmes.

