

S. Joannis a Cruce, Conf. et Eccl. Doct. - Novembris 24
Proprium Sanctorum pro aliquibus locis

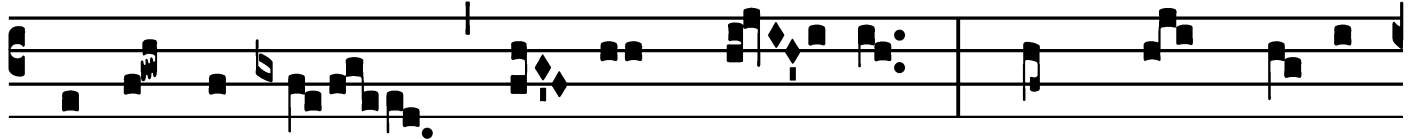
Introit

Intr.
5.

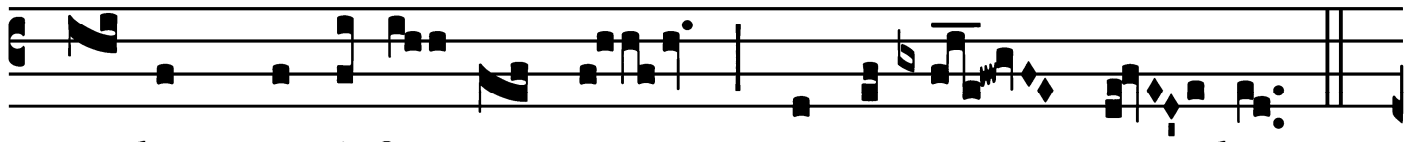
M



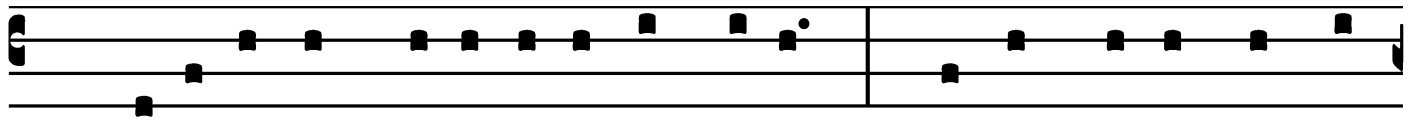
I-hi ábsit * glo-ri-á-ri, ni-si in crú-ce Dó-



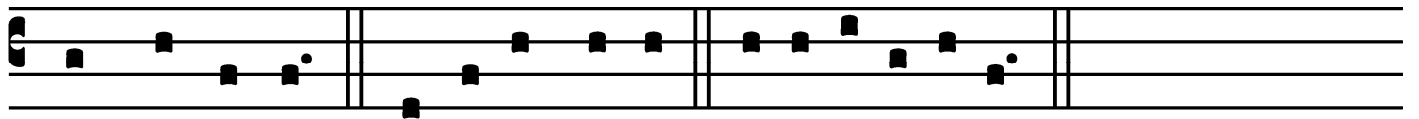
mi-ni nóstri Jé-su Chrí-sti : per quem mí-hi



múndus cru-ci-fí-xus est, et é-go mún-do.



Ps. Be-á-ti immacu-lá-ti in ví-a : * qui ámbu-lant in lé-



ge Dómi-ni. Gló-ri-a Pátri. E u o u a e.

Gradual


(Page 1 of 2)

Grad. 3.

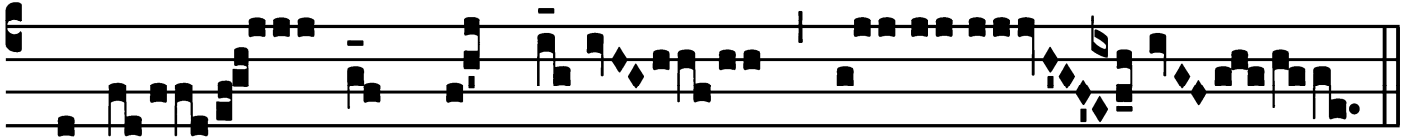
Q UI vult post me * vení- re, áb-
neget semet-í- psum,
et tól- lat crúcem sú- am, et se- quá- tur
me. *∞*. Anima mé-
a de- side- rá- vit te in nó- cte :
sed et spí- ri- tu mé- o in præ-
cór- di- is mé- is de ma-

Gradual

(Page 2 of 2)




ne vi-



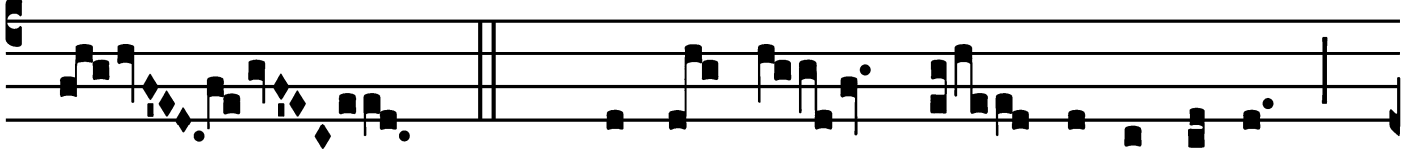
gi-lá- bo * ad te.

Alleluia

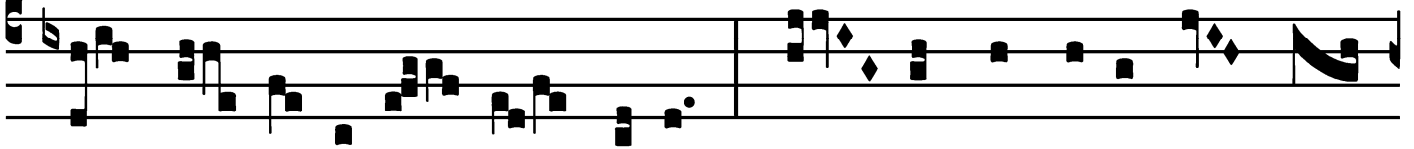
1.
A Lle-lú- ia. * *ij.*




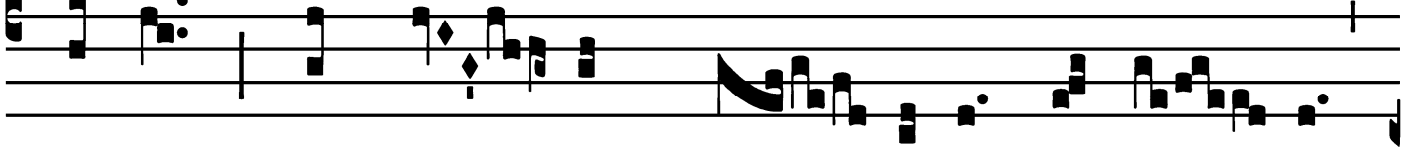
∞. Quæ-sí- vi sa- pi- énti- am



in o- ra- ti- ó- ne mé- a : múl- tam invéni in me-



íпсо, et mul- tum pro- fé-ci * in é- a.



Offertory

Offert. 1.

- rit tí-bi * Dómi-nus in lú-cem
sempi-tér-nam, et Dé-us tú-us in
gló-ri-am tú-am.

Communion

Comm.

7.

P

RO é-o * quod labo-rá-vit áni- ma é-jus, vi-

dé- bit sémen lon- gæ-vum, et vo-lúntas Dómi- ni

in mánu é- jus di- ri- gé- tur.

Missae Propriae Ordinis Carmelitarum Excalceatorum
Desclée et Socii, 1909.
Supplement to Graduale Romanum No. 696.

