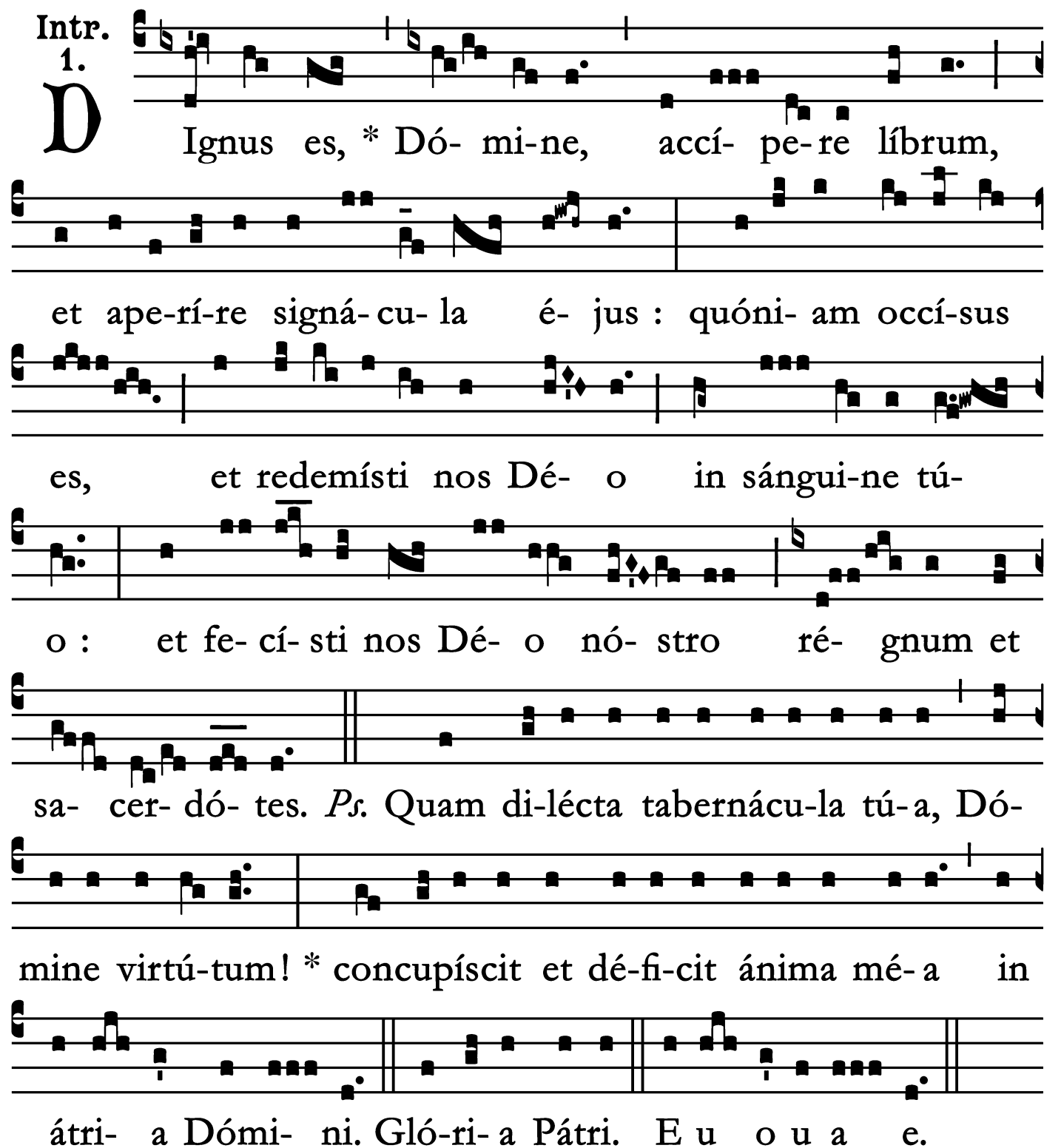


S. Gasparis del Bufalo, Confessoris - Die 3 Januarii  
Proprium Sanctorum pro aliquibus locis

## Introit

Intr. 1.



**D** Ignus es, \* Dó- mi-ne, accí- pe-re líbrum,  
et ape-rí-re signá- cu- la é- jus : quóni- am occí- sus  
es, et redemísti nos Dé- o in sán- gui- ne tú-  
o : et fe- cí- sti nos Dé- o nó- stro ré- gnum et  
sa- cer- dó- tes. *Ps.* Quam di- lécta taberná- cu- la tú- a, Dó-  
mine virtú- tum! \* concupí- scit et dé- fi- cit á- ni- ma mé- a in  
á- tri- a Dómi- ni. Gló- ri- a Pátri. E u o u a e.

# Gradual

(Page 1 of 2)

Grad.

3.

V

I- di \* álte- rum Ange- lum

vo- lán- tem per mé- di- um cóe- li, habén-

tem Evangé- li- um æ- tér- num, ut ev- ange-

li- zán- ret sedén- ti- bus super tér-

ram.

∇. Quam spe- ci- ó- si

pé- des evange- li- zán- ti- um bóna,

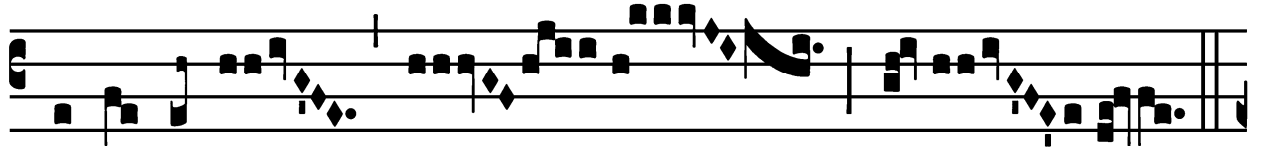
evange- li- zánti- um



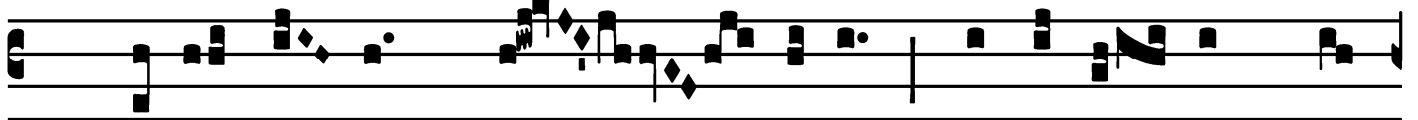
S. Gasparis del Bufalo, Confessoris - Die 3 Januarii

*Alleluia*

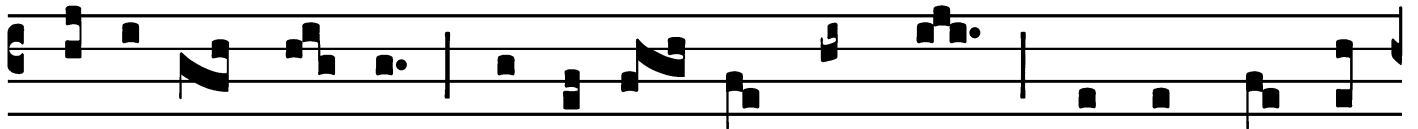
7.  
**A**



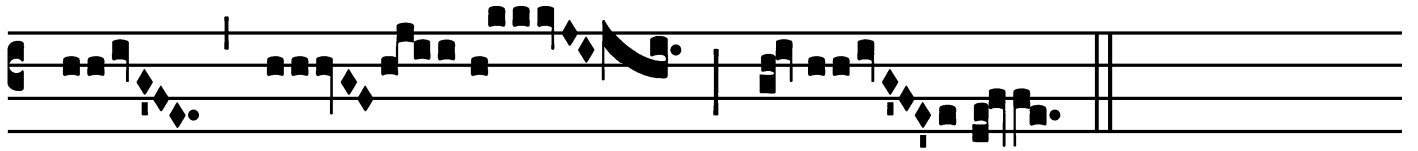
Lle-lú-ia. \* *ij.*



Ÿ. Dé-o au-tem grá- ti-as, qui odó-rem no-



tí-ti-æ sú-æ ma-ni-fé-stat per nos \* in ómni ló-



co.

S. Gasparis del Bufalo, Confessoris - Die 3 Januarii

# Alleluia

(In Paschal Time – In place of the Gradual)

6.  
**A** Lle-lú- ia. \* *ij.*

Ÿ. Quam spe-ci- ó- si pé- des evange-li-zánti- um

bó- na, evange-li-zánti- um \* pá- cem!

*In Paschal Time, Alleluia “Déo autem” follows.*

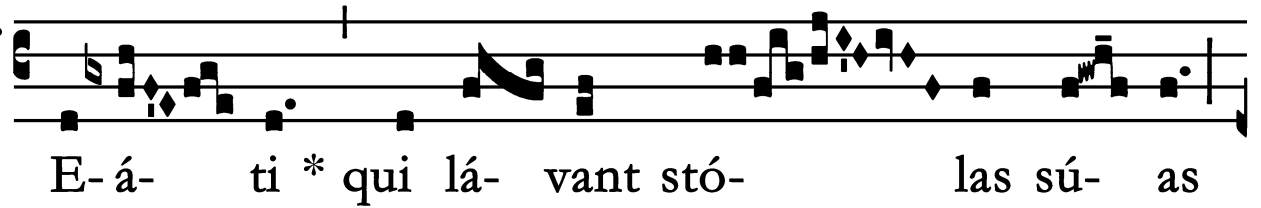
S. Gasparis del Bufalo, Confessoris - Die 3 Januarii

*Offertory*

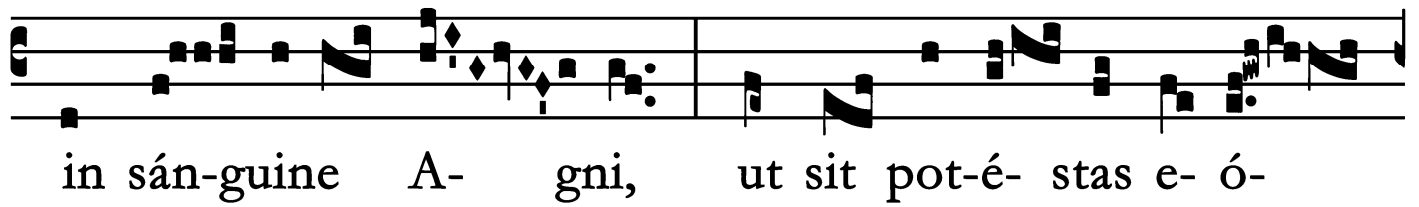
Offert.

5.

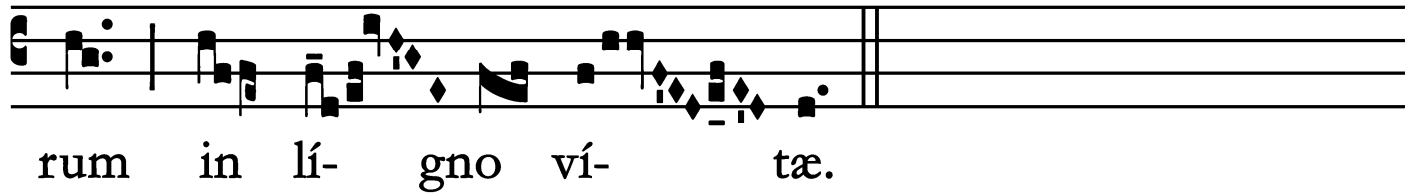
**B**



E-á- ti \* qui lá- vant stó- las sú- as



in sán-guine A- gni, ut sit pot-é- stas e- ó-



rum in lí- gno ví- tæ.

S. Gasparis del Bufalo, Confessoris - Die 3 Januarii

*Communion*

Comm.  
3.  
**A**



- gnus, \* qui in médi- o thró- ni est, ré-  
get íl- los, et dedú- cet é- os ad ví- tæ fón- tes  
a- quá- rum.

Missae Propriae pro Clero Romano  
Desclée et Socii, 1908.  
Supplement to Graduale Romanum No. 696.

