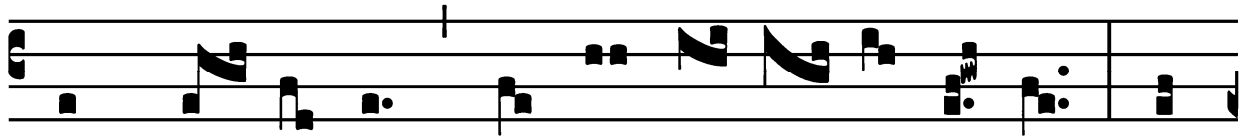


S. Emigdi, Episcopi et Martyris - Augusti 11
Proprium Sanctorum pro aliquibus locis

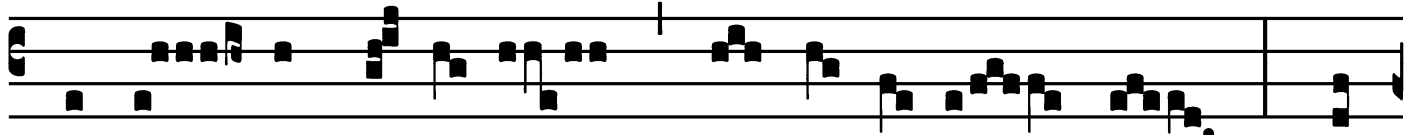
Introit

Intr.
8.

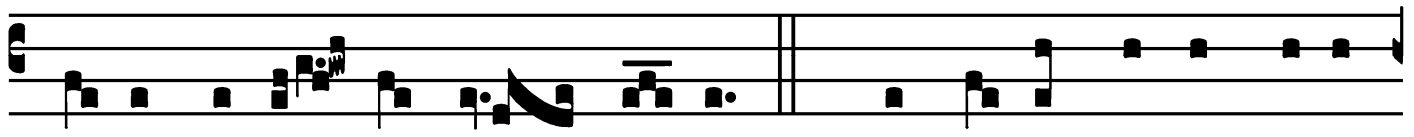
C



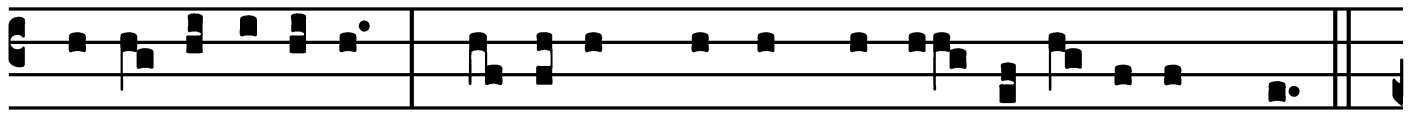
Ommó- ta est, * et contré-mu- it tér-ra : fun-



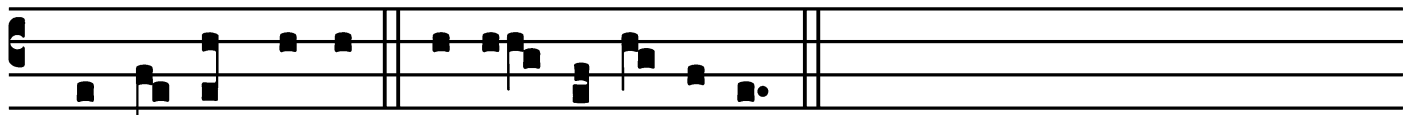
damén- ta mónti- um con-turbá- ta sunt, quó-



ni- am i-rá- tus est é- is. *Ps.* Invo-ca me in dí-e



tribu- la- ti- ónis : * é- ru- am te, et hono- ri- fi- cábis me.



Gló-ri- a Pátri. E u o u a e.

S. Emigdi, Episcopi et Martyris - Augusti 11

Gradual

Grad.

1.

D

Edí- sti * me-tu-éntibus te signi- fi-ca- ti-

ó- nem, ut fú- gi- ant a fá-ci- e ár- cus.

∩. Ut libe-réntur

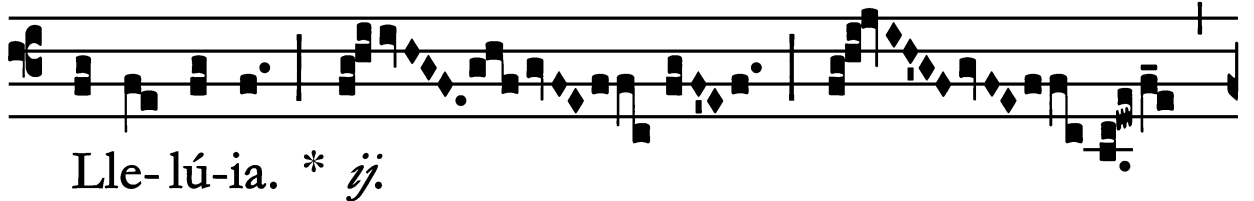
di-lé- cti tú- i : sálvum fac déx-

te-ra tú- a, * et ex-áudi me.

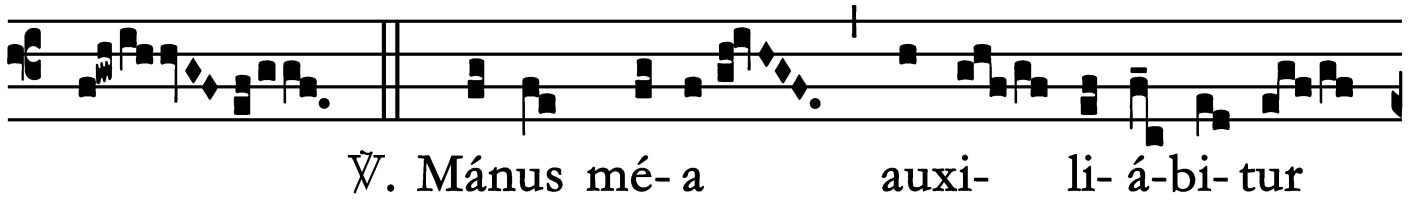
S. Emigdi, Episcopi et Martyris - Augusti 11

Alleluia

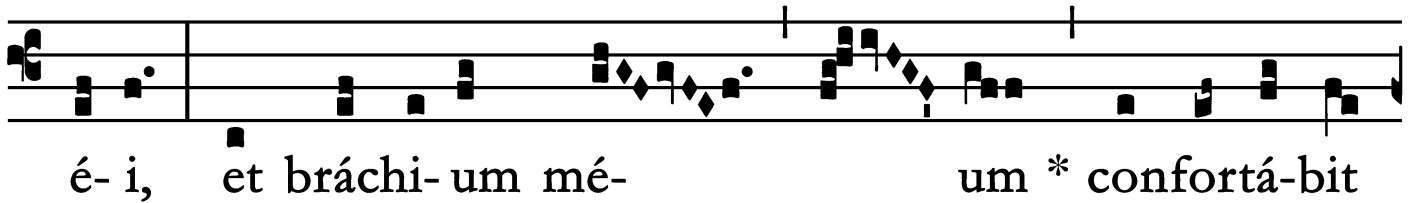
2.
A



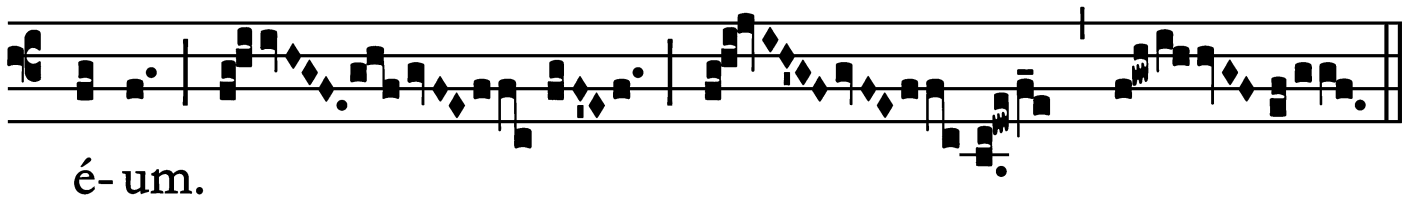
Lle-lú-ia. * *ij.*



V. Mánus mé-a auxi- li- á-bi- tur



é- i, et bráchi- um mé- um * confortá-bit



é- um.

S. Emigdi, Episcopi et Martyris - Augusti 11

Offertory

Offert. 3.



Ommo- ví- sti tér- ram, * et contur-bá-
sti é- am : Sá- na contri- ti- ónes é-
jus, qui- a commó- ta est.

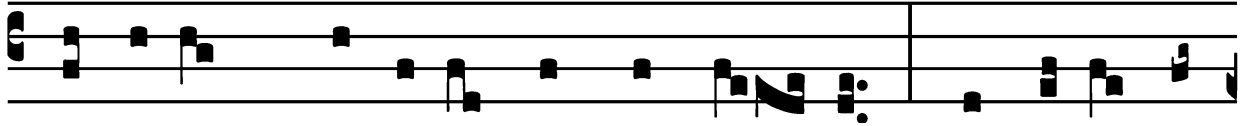
S. Emigdi, Episcopi et Martyris - Augusti 11

Communion

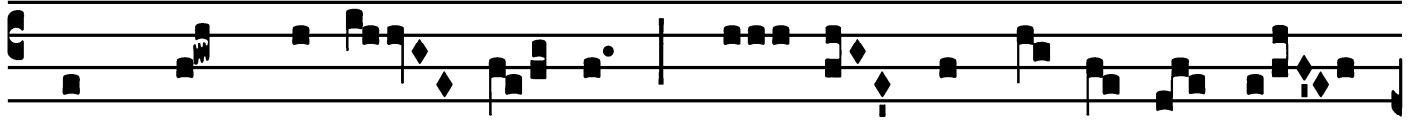
Comm.

5.

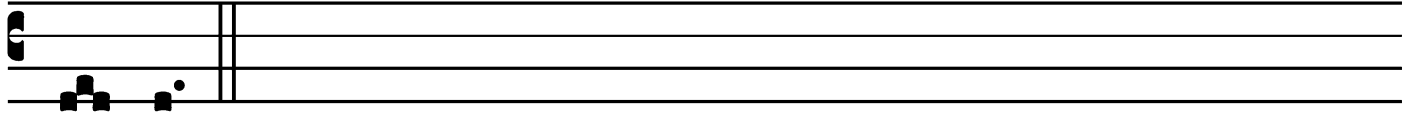
T



Ime-at * Dóminum ómnis tér- ra : ab é-o au-



tem commove- áan-tur ómnes inha-bi- tán-tes



ór-bem.

Missae Propriae Ordinis Carmelitarum Excalceatorum
Desclée et Socii, 1909.
Supplement to Graduale Romanum No. 696.

