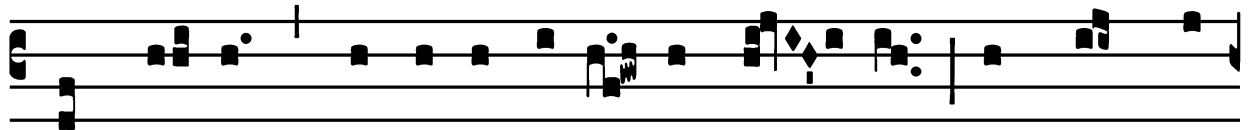


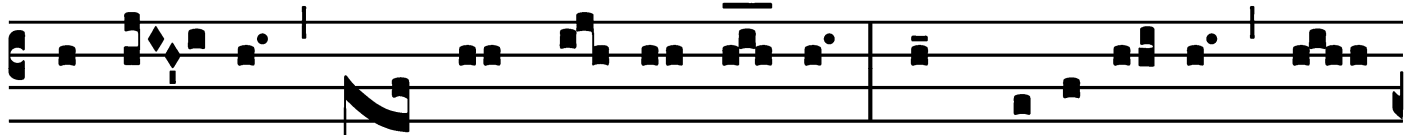
Introit

Intr.
5.

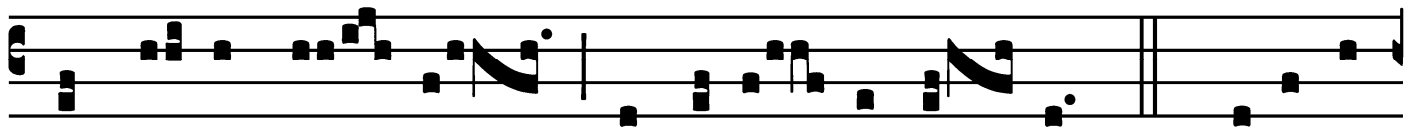
L



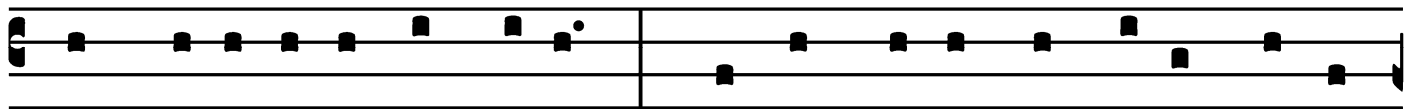
Oqué-bar * de testimóni- is tú- is in conspé-



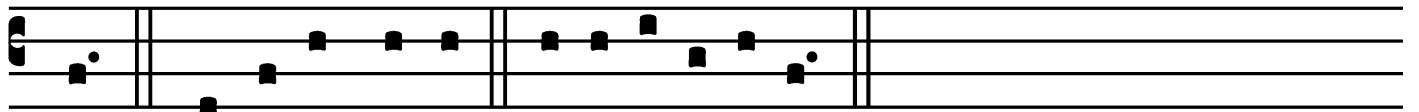
ctu ré- gum, et non confundé- bar : et medi-tá-bar in



mandá- tis tú- is, quæ di-lé- xi ni- mis. *Ps.* Be-á-ti



immacu-lá-ti in ví- a : * qui ámbu-lant in lége Dómi-



ni. Gló-ri- a Pátri. E u o u a e.

Gradual

Grad.
7.

A

Udi, fí-li-a, * et ví-de,

et inclí-na áurem tú-

am :

qui-a concupí-vit rex

spé-ci-em tú-am.

∇. Spé-ci-e tú-a,

et pulchri-tú-di-ne tú-a inténde, pró-

spe-re procé-de, * et ré-

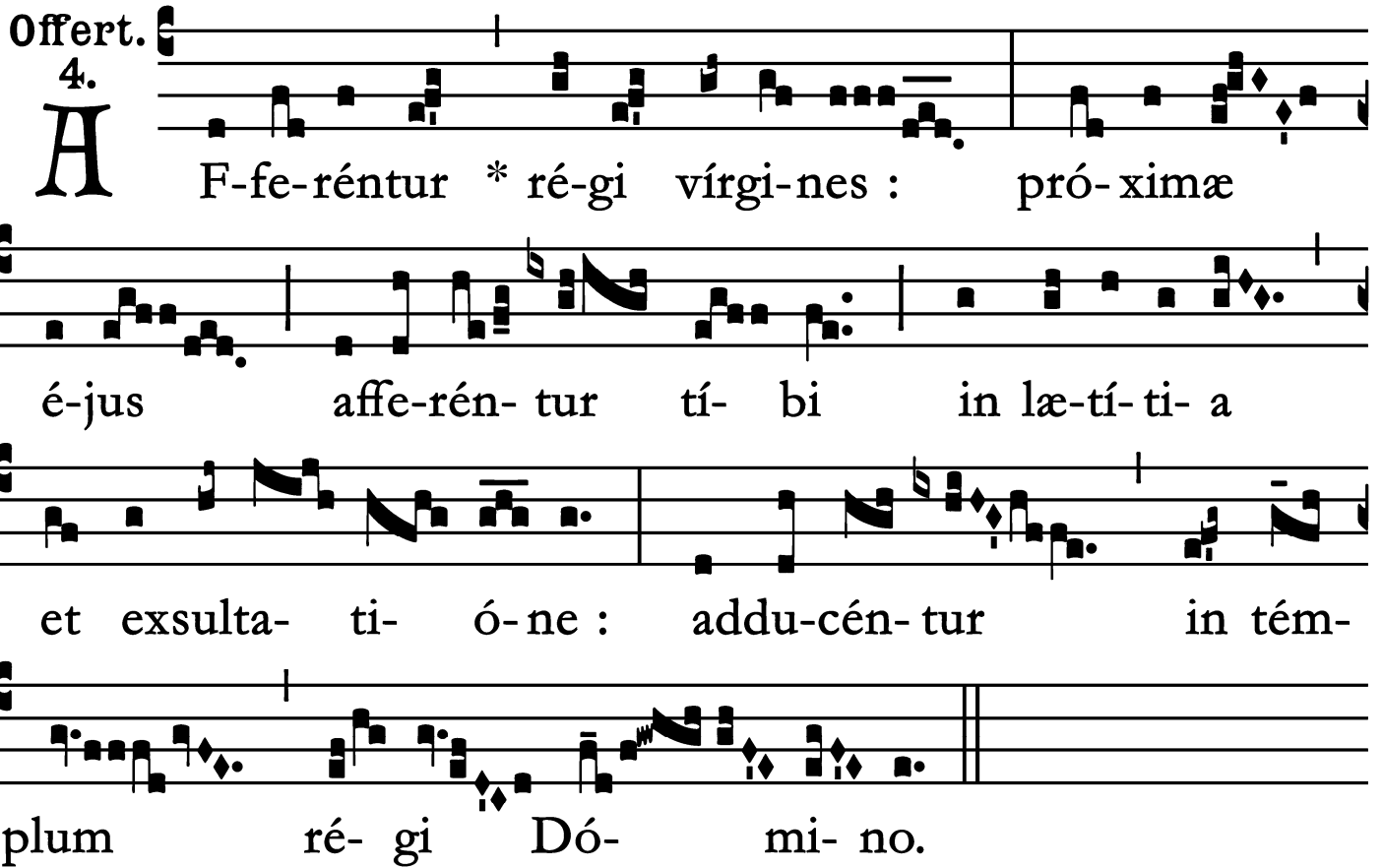
gna.

Alleluia

7.
A Lle- lú-ia. * *ij.* *V.* Quin-
que pru- déntes vír-gines acce- pé-runt ó- le-um
in vá-sis sú- is cum lampá- dibus : mé-di- a autem
nó- cte clámor fáctus est :
Ecce spónsus vé- nit : ex- í-te ób- vi- am Chrí-
sto * Dó- mino.

Offertory

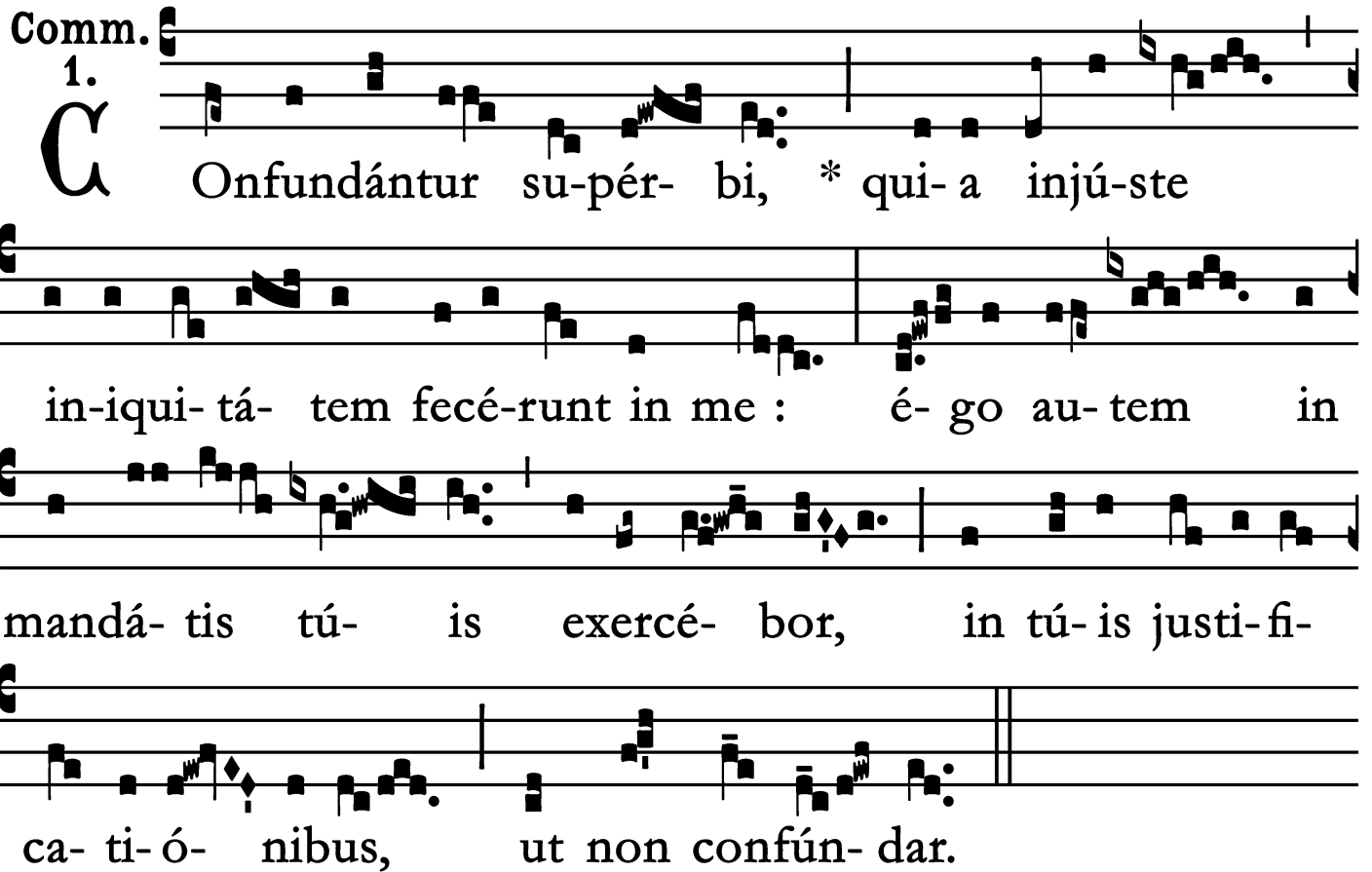
Offert. 4.



A F-fe-réntur * ré-gi vír-gi-nes : pró-ximæ
é-jus affe-rén-tur tí-bi in læ-tí-ti-a
et exsulta-ti-ó-ne : addu-cén-tur in tém-
plum ré-gi Dó-mi-no.

Communion

Comm. 1.



Onfundántur su-pér- bi, * qui- a injú-ste
in-iqui- tá- tem fecé-runt in me : é- go au- tem in
mandá- tis tú- is exercé- bor, in tú- is justi- fi-
ca- ti- ó- nibus, ut non confún- dar.

