

Eucharistici Cordis Jesu – Missa Votiva
Proprium Sanctorum pro aliquibus locis

Introit

Intr.

4.

S

Cí-ens Jé- sus * qui- a vé-nit hó-ra é- jus ut

tránse- at ex hoc mún- do ad Pá- trem : cum di-

lexís- set sú- os, qui é- rant in mún- do, in fí- nem

di- lé- xit é- os. *T. P.* Al- le- lú- ia, alle- lú- ia.

Ps. Cantá- te Dómino cánti- cum nóvum : * qui- a mi- ra- bí-

li- a fé- cit. Gló- ri- a Pátri. E u o u a e.

Eucharistici Cordis Jesu – Missa Votiva

Gradual

Grad.

5.

G

Xsúl-ta * et láuda,

habi-tá- ti- o

Sí- on,

qui- a má- gnus in mé- di- o

tú- i Sánctus Is- ra-ël.

∞. Nó-tam fá-ci-te in pó-

pu- lis adinveni- ó-

nes * é- jus.

Eucharistici Cordis Jesu – Missa Votiva

Alleluia

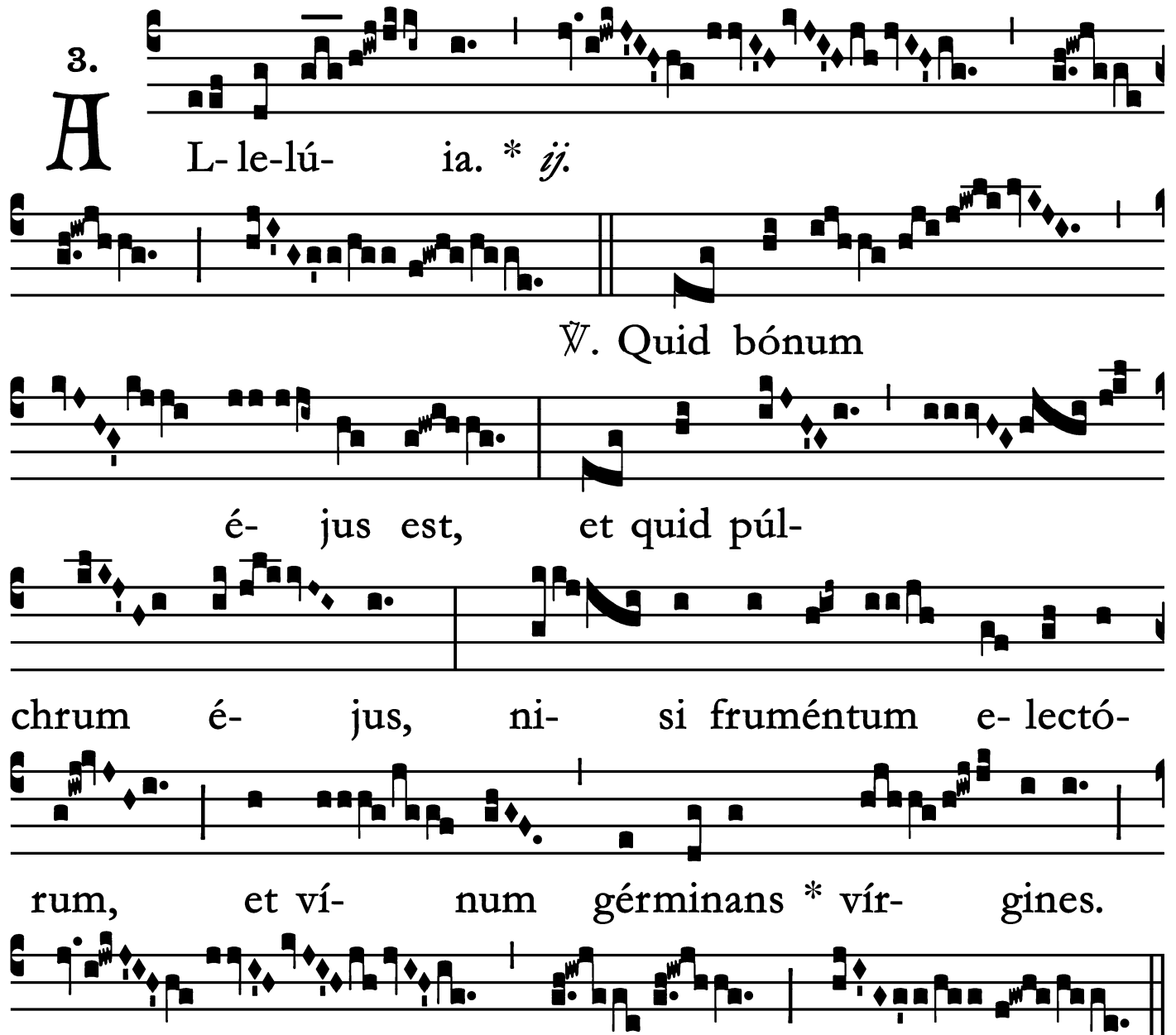
3.
A L-le-lú- ia. * *ij.*

∇. Quid bónum

é- jus est, et quid púl-

chrum é- jus, ni- si fruméntum e- lectó-

rum, et ví- num gérrinans * vír- gines.

The image shows a musical score for the Alleluia. It consists of five systems of music. Each system has a vocal line (treble clef) and a piano accompaniment line (bass clef). The lyrics are written below the vocal line. The first system starts with a large 'A' and the lyrics 'L-le-lú- ia. * ij.'. The second system begins with a sign of the cross '∇' and the lyrics 'Quid bónum'. The third system has the lyrics 'é- jus est, et quid púl-'. The fourth system has the lyrics 'chrum é- jus, ni- si fruméntum e- lectó-'. The fifth system has the lyrics 'rum, et ví- num gérrinans * vír- gines.'. The music is in a 3/4 time signature and features a variety of note values and rests.

Eucharistici Cordis Jesu – Missa Votiva

Second Alleluia

(In Paschal Time)

1.
A L- le- lú- ia. *

V. Jú- sti epu-lén-
tur, et exsúl- tent in conspé- ctu Dé- i.
Pa-rá- sti in dulcédine tú-
a * páu-pe-ri Dé- us.

Eucharistici Cordis Jesu – Missa Votiva

Tract

(After Septuagesima – Page 1 of 2)

Tract.

8.

F

I-li- i * hó- mi- num in tégmine

a-lárum tu- árum,

Dó- mi- ne, spe-rá-

bunt. *∇*. Inebri- a-

bún- tur ab ubertá-

te dómus

tú- æ : et torrén-te

vo-luptá- tis

tú- æ

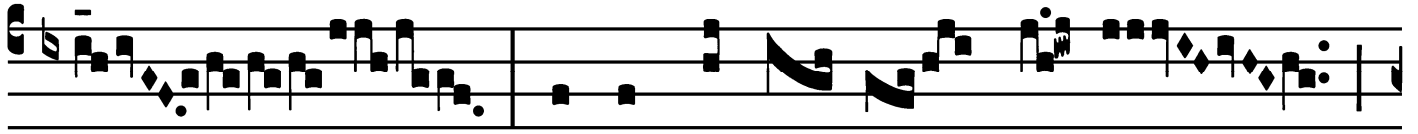
po-tá- bis é-

os. *∇*. Quóni- am apud te est fons ví- tæ :

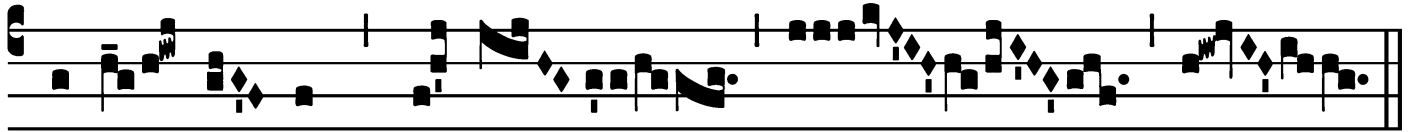
Eucharistici Cordis Jesu – Missa Votiva

Tract

(Page 2 of 2)



et in lúmi- ne tú- o



vidé- bi-mus * lúmen.

Eucharistici Cordis Jesu – Missa Votiva

Offertory

Offert. 1.



Uam má- gna * multi- tú- do dulcé-di-
nis tú- æ, Dó- mi- ne, quam abscondí-sti timén-
ti-bus te.

T. P. † Alle-lú- ia.

Eucharistici Cordis Jesu – Missa Votiva

Communion

Comm. 3.
E Cce égo * vobís-cum sum ómnibus
di-é-bus, usque ad consumma-ti-ó-nem sáe-cu-
li, dí-cit † Dómi-nus.
T.P. † Dómi-nus. Alle-lú-ia.

