

Votive Mass of Our Lord Jesus Christ the King

*Introit*

Intr.

3.

**D**

Ignus est Agnus, \* qui occí-sus est, accípe-

re virtú- tem, et di-vi- ni- tá- tem, et sapi- én- ti- am,

et forti- tú- dinem, et ho- nó- rem. Ipsi gló- ri-

a et impé- ri- um in sæ- cu- la sæ- cu- ló- rum.

*T. P.* Alle- lú- ia, alle- lú- ia. *Ps.* Dé- us, judí- ci- um tú-

um Régi da : \* et justí- ti- am tú- am Fí- li- o Ré- gis.

Gló- ri- a Pátri. E u o u a e.

Votive Mass of Our Lord Jesus Christ the King

*Gradual*

Grad.

5.

**D**

Ominá- bi-tur \* a má- ri us- que

ad má- re, et a flúmi- ne usque ad términos

ór- bis terrá-rum. *V.* Et ado-rábunt é-

um ómnes

ré- ges tér- ræ : ó- mnes Gén- tes

sér- vi- ent \* é- i.

Votive Mass of Our Lord Jesus Christ the King

*Alleluia*

1.  
**A** Lle- lú- ia. \* *ij.*

∇. Po-té-stas é-jus, po-té- stas

æ- tér- na, quæ non au-fe-ré- tur :

et ré- gnum

é-jus, \* quod non cor- rumpé- tur.

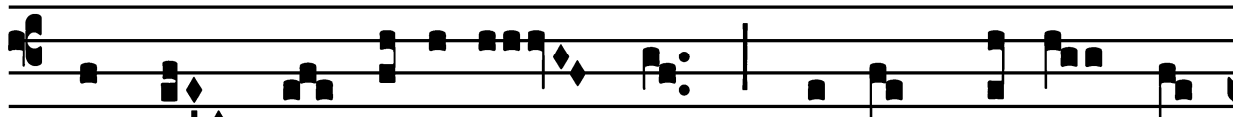
Votive Mass of Our Lord Jesus Christ the King

*Tract*

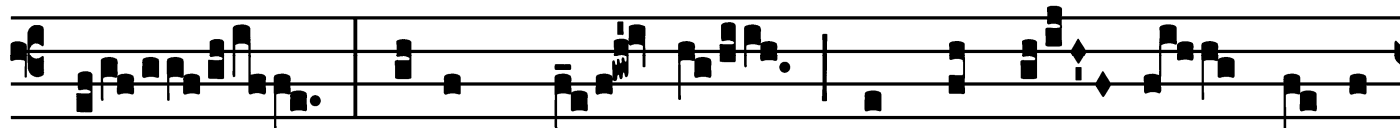
Tract.

2.

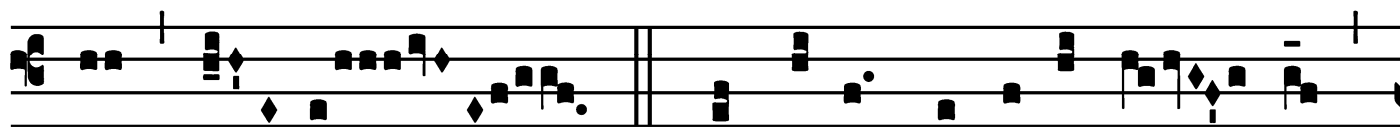
I



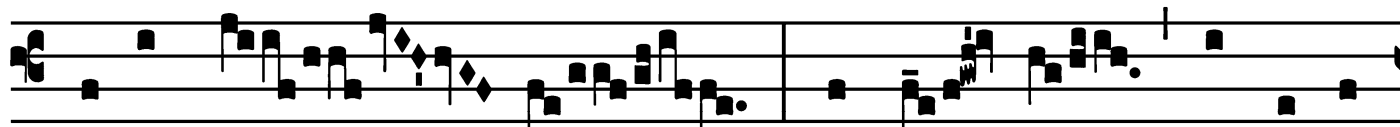
-pse in-vocábit me : \* Pá-ter mé-us es



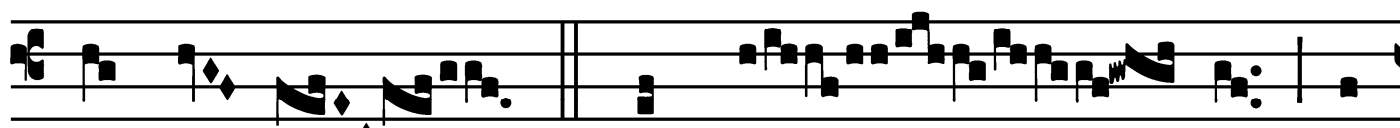
tu : Dé-us mé-us, et suscé-ptor sa-lú-



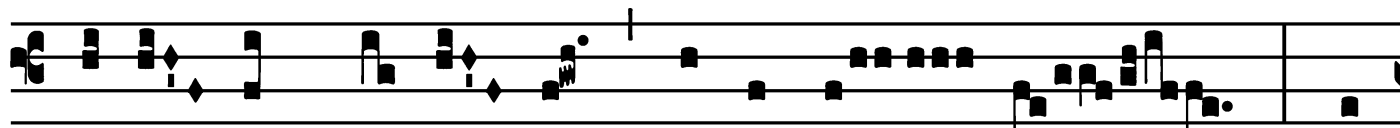
tis mé-æ. √. Et égo primogé-ni-tum



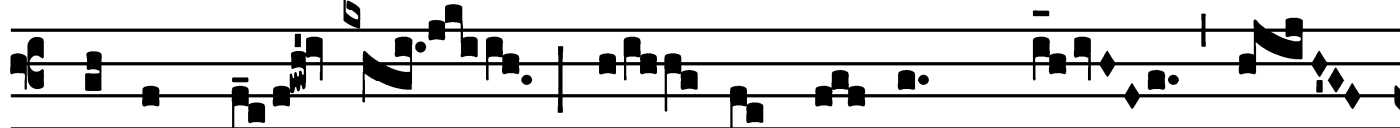
pónam íl-lum : excél-sum præ ré-gi-



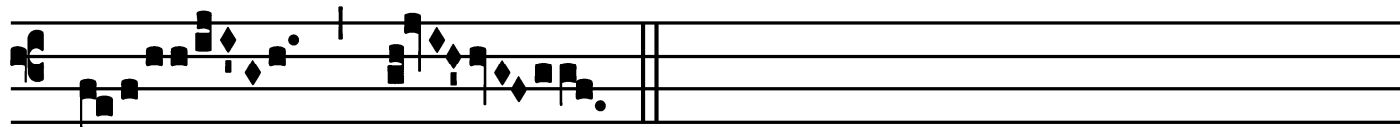
bus tér-ræ. √. Et pó-nam in



sæcu-lum sæ-cu-li sémen é-jus : et



thrónum é-jus sic-ut dí-es \* cæ-



li.

Votive Mass of Our Lord Jesus Christ the King

*Second Alleluia*

(In Paschal Time)

1.  
**A**

L-le- lú- ia. \*

∩. Há- bet in vestimén-

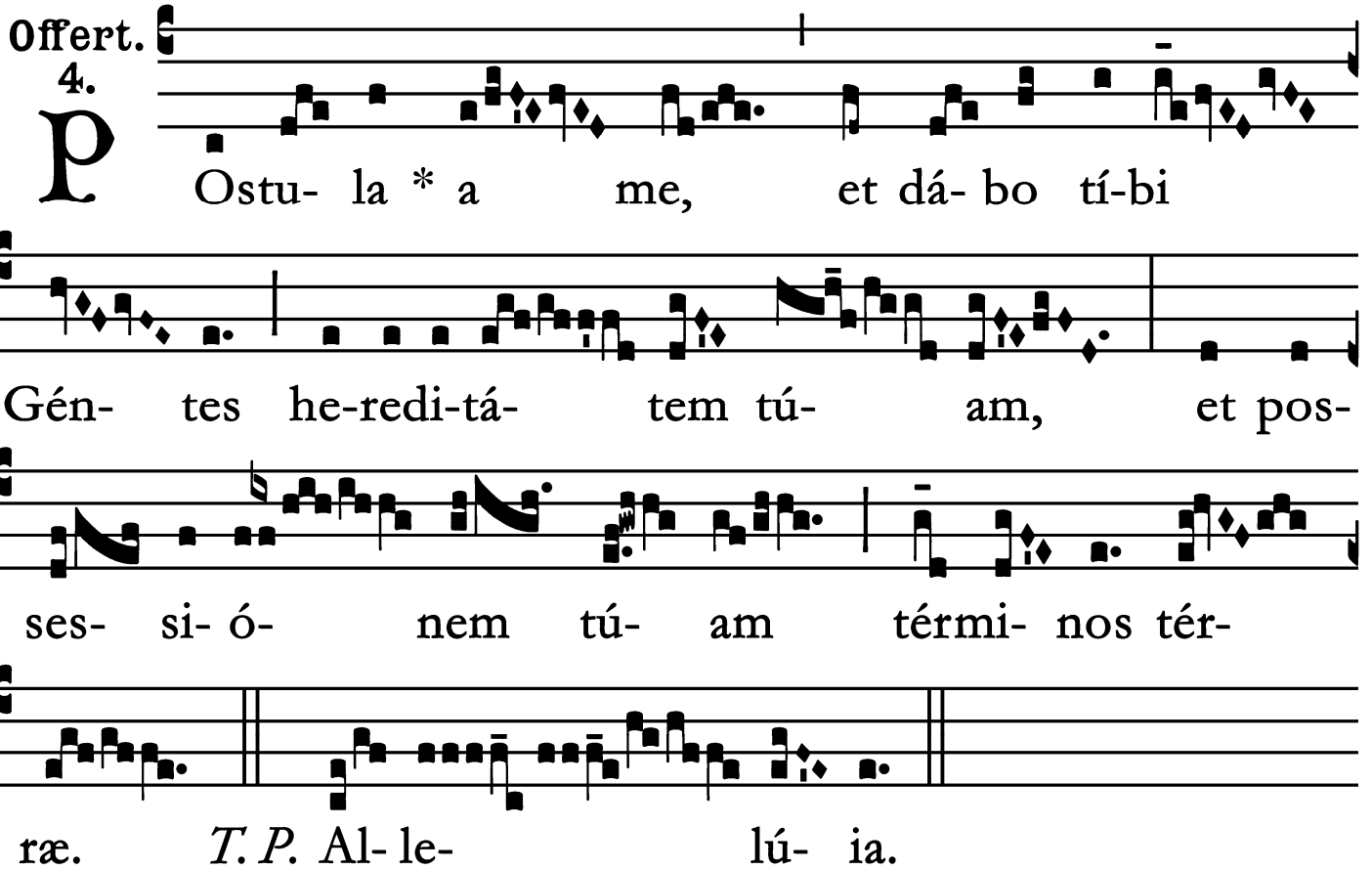
to et in fémo-re sú- o scrí- ptum : Rex

ré- gum, et Dó-

mi- nus \* domi- nán- ti- um.

Votive Mass of Our Lord Jesus Christ the King

*Offertory*

Offert. 

4.  
**P** Ostu- la \* a me, et dá- bo tí-bi

Gén- tes he-redi-tá- tem tú- am, et pos-

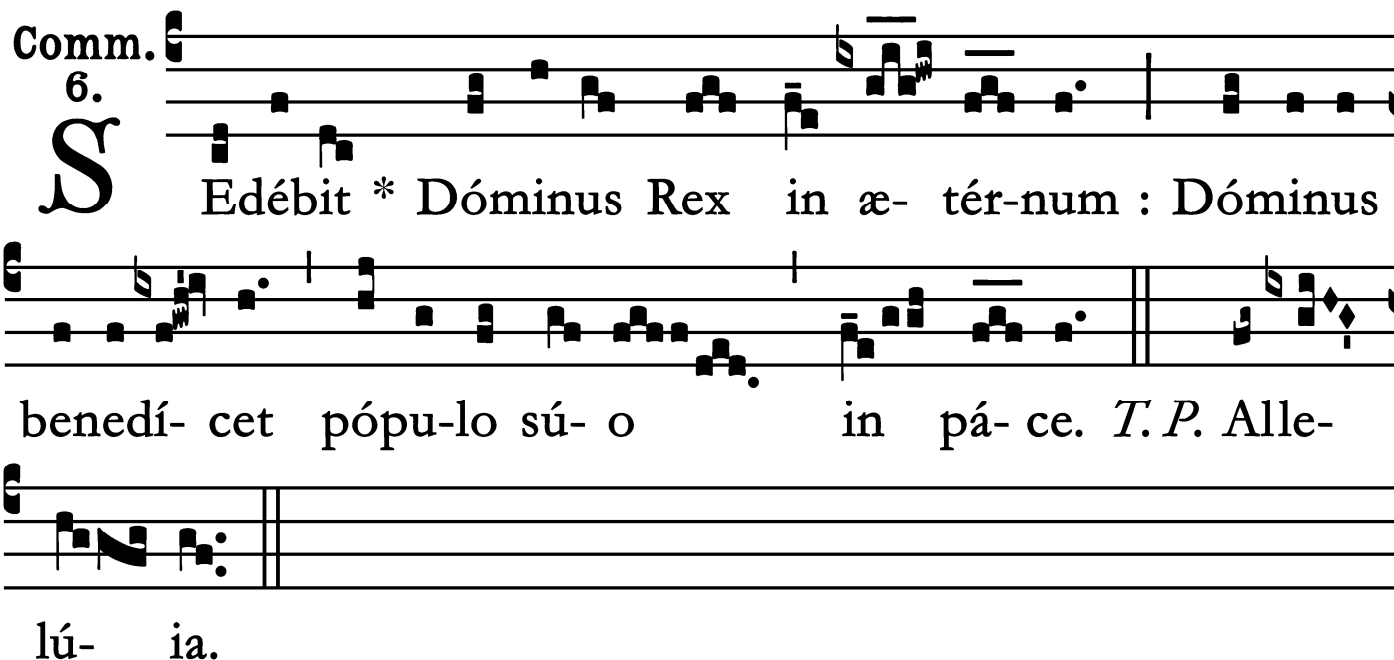
ses- si- ó- nem tú- am térmi- nos tér-

ræ. *T. P.* Al- le- lú- ia.

Votive Mass of Our Lord Jesus Christ the King

*Communion*

Comm. 6.



**S** Edébit \* Dóminus Rex in æ- tér-num : Dóminus  
benedí- cet pópu-lo sú- o in pá- ce. *T.P.* Alle-  
lú- ia.

