

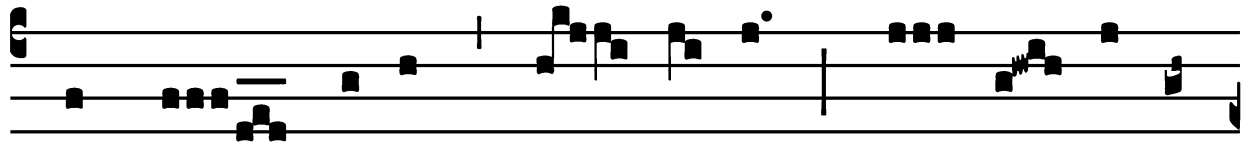
Common of Two or More Martyrs in Paschal Time

Introit

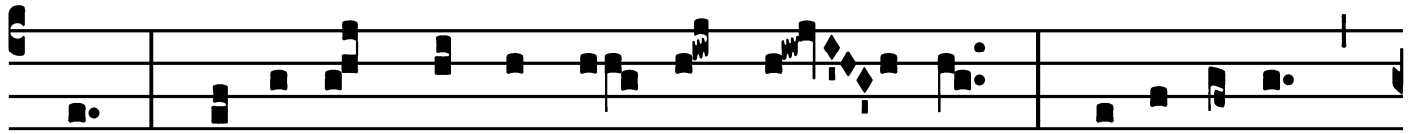
Intr.

3.

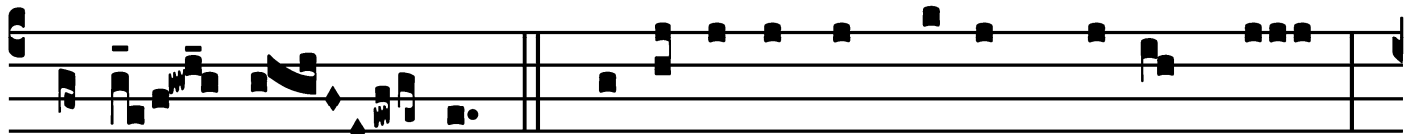
S



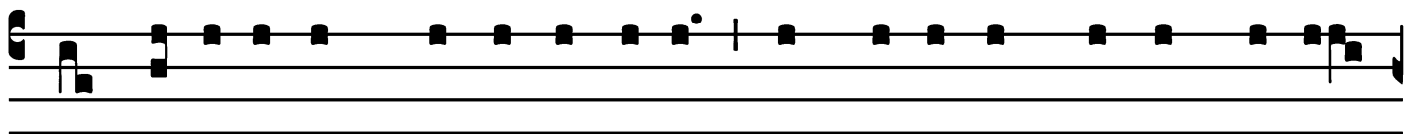
Ancti tú- i, * Dó- mi- ne, be- ne- dí- cent



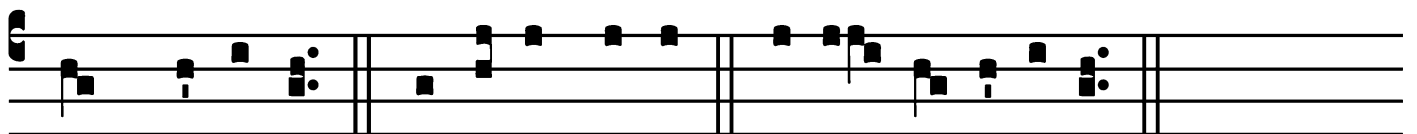
te : gló- ri- am régni tú- i dí- cent, alle- lú- ia,



alle- lú- ia. *Ps.* Exaltábo te Dé- us mé- us Rex : *



et benedí- cam nómi- ni tú- o in sáecu- lum, et in sáecu-



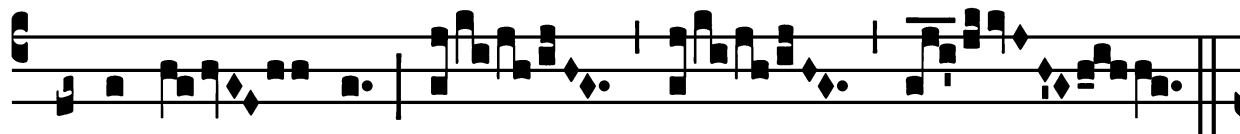
lum sáecu- li. Gló- ri- a Pátri. E u o u a e.

Common of Two or More Martyrs in Paschal Time

Alleluia

8.

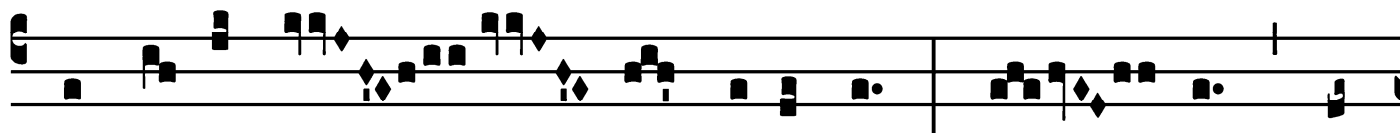
A



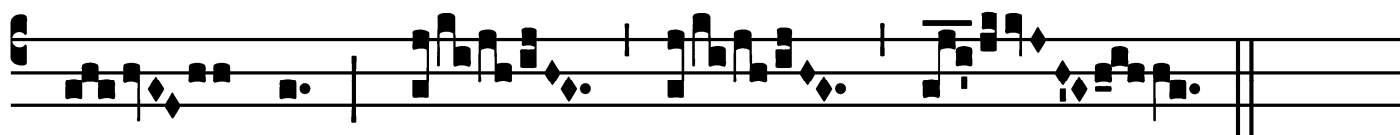
Lle-lú- ia. * *ij.*



∞. Sáncti tú- i, Dó- mine, flo-ré-bunt sic-ut lí-li-um :



et sic-ut ó- dor bálsami é- runt * an-



te te.

Common of Two or More Martyrs in Paschal Time

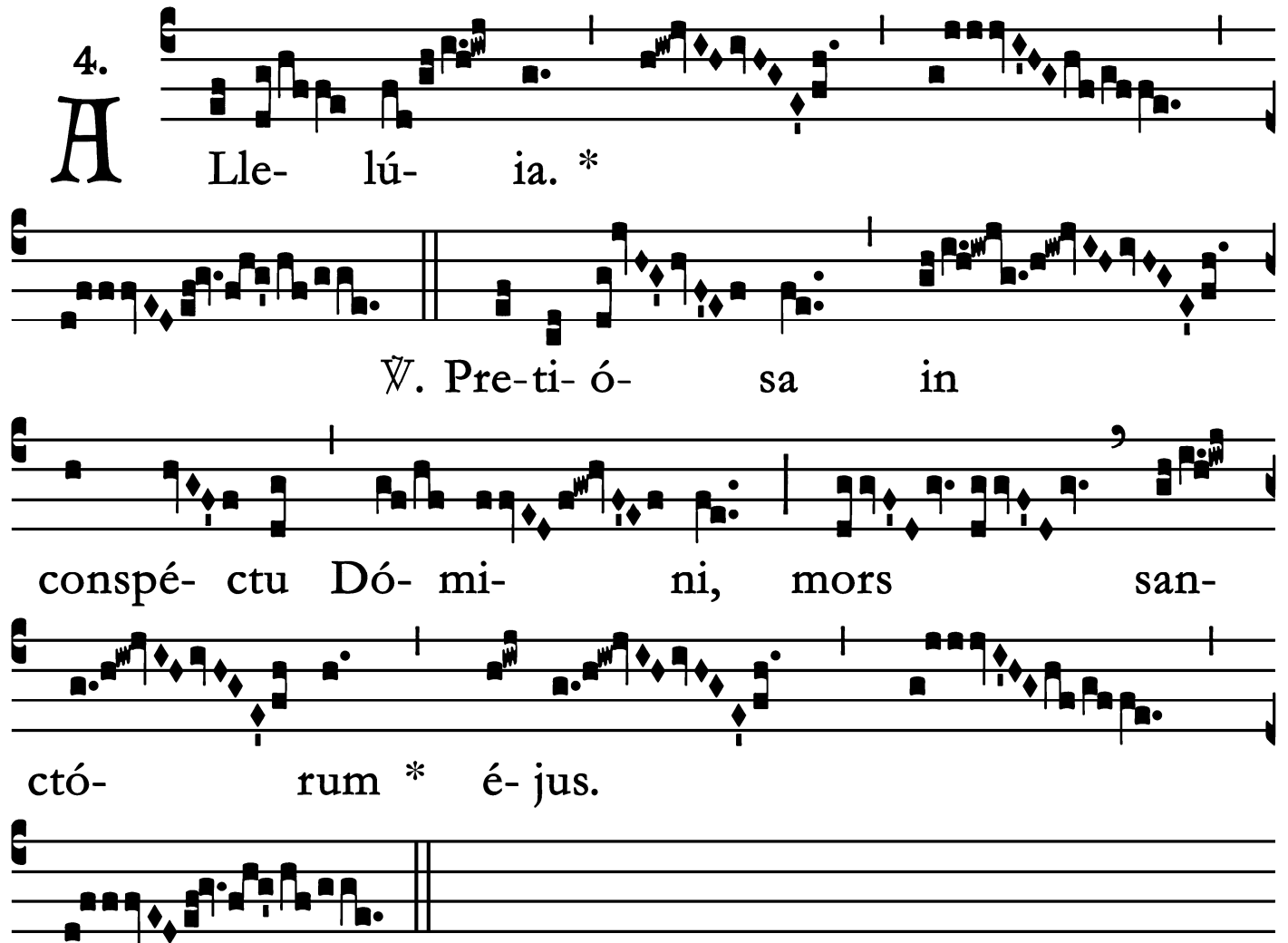
Second Alleluia

4.
A Lle- lú- ia. *

∇. Pre-ti- ó- sa in

conspé- ctu Dó- mi- ni, mors san-

ctó- rum * é- jus.

The image shows a musical score for the Second Alleluia. It begins with a four-measure introduction marked '4.' and a large 'A' time signature. The first staff contains the lyrics 'Lle- lú- ia. *'. The second staff contains '∇. Pre-ti- ó- sa in'. The third staff contains 'conspé- ctu Dó- mi- ni, mors san-'. The fourth staff contains 'ctó- rum * é- jus.'. The fifth staff is a continuation of the melody. The music is written on a grand staff with a treble clef and a common time signature. The lyrics are written below the notes.

Common of Two or More Martyrs in Paschal Time

Offertory

Offert. 1.

Æ-tá-mi-ni * in Dó-mino, et exsul-
tá-te jú-sti : et glo-ri-ámi-
ni ó-mnes ré-cti cór-de, alle-
lú-ia, alle-lú-ia.

Common of Two or More Martyrs in Paschal Time

Communion

Comm. 1.



G Audé- te * jú- sti in Dó- mi- no, alle-
lú- ia : ré- ctos dé- cet collau- dá-ti- o,
al-le- lú- ia.

