

Common of Abbots

*Introit*

Intr.

6.

O

S jú- sti \* medi- tá- bi-tur sapi- énti- am,

et língua é- jus loqué-tur judí- ci- um : lex Dé- i

é- jus in córde ipsí- us. *T. P.* Alle- lú- ia,

alle- lú- ia. *Ps.* Nó-li æmu- lá-ri in ma- lignántibus : \*

neque ze- láve- ris fa- ci- éntes in- iqui- tá- tem. Gló- ri- a Pá-

tri. E u o u a e.

Common of Abbots

*Gradual*

Grad.

4.

**D**

Domine, \* præ-venísti é- um in bene-di-

cti- óni- bus dulcé- di- nis : posu- í- sti in cá-

pi-te é-jus co-ró- nam de lápi-de pre-ti- ó-

so.  $\forall$ . Ví- tam

pé- ti- it, et tri- bu- í- sti é- i longi-tú-

di- nem di- é- rum in sá- cu- lum

\* sá- cu- li.

Common of Abbots

*Alleluia*

1.  
**A** L-le- lú- ia. \* *ij.*

∞. Jú- stus ut pál-  
ma flo- ré- bit, et sic-ut cé-  
drus  
\* multi- pli-cá- bi-tur.

Common of Abbots  
*Second Alleluia*  
(In Paschal Time)

1.  
**A** Lle- lú- ia. \*

Ÿ. Jú- stus ger- miná-  
bit sic-ut lí- li- um : et flo- ré-  
bit in æ- tér- num \* ante  
Dómi- num.

Common of Abbots

*Tract*

Tract.  
8.

**B**

E-á- tus vir, \* qui tímet Dó- mi-

num : in man-dá- tis é- jus

cú- pit ni- mis.  $\nabla$ . Pót- ens in térra

é-rit sémen é- jus : ge-ne- rá- ti-o re- ctó-

rum be- ne- di-cé-tur.

$\nabla$ . Gló- ri- a et di-ví-ti-æ in dómo é- jus : et

ju- stí- ti- a é- jus má- net \* in sá- cu- lum

sá- cu- li.

Common of Abbots

*Offertory*

Offert.

6.

**D**

Esidé- ri- um \* á- nimæ é- jus tribu- í- sti

é- i, Dómine, et vo- luntá- te labi- órum é- jus

non fraudá- sti é- um : posu- í- sti in cápi- te é-

jus coró- nam de lá- pi- de pre- ti- ó-

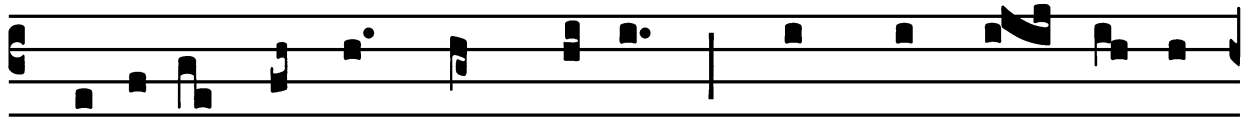
so. *T. P.* Alle- lú- ia.

Common of Abbots  
*Communion*

Comm.

7.

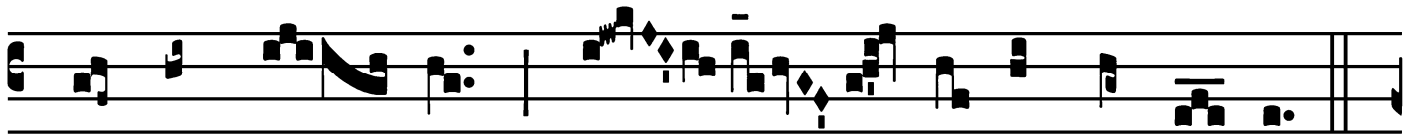
**F**



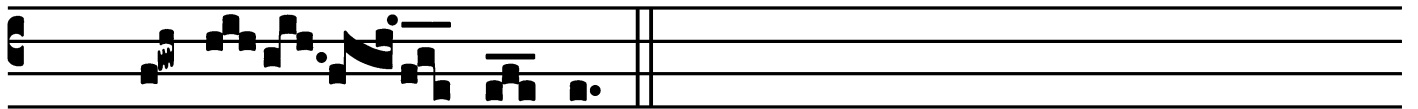
Idé-lis sérvus \* et prúdens, quem constí- tu- it



Dómi-nus super famí-li- am sú- am : ut det íl- lis



in témpo- re trí- ti- ci mensú- ram.



*T. P.* Alle- lú- ia.

