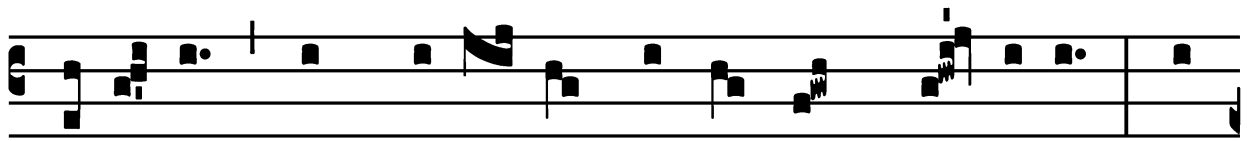


Votive Mass of St. Joseph

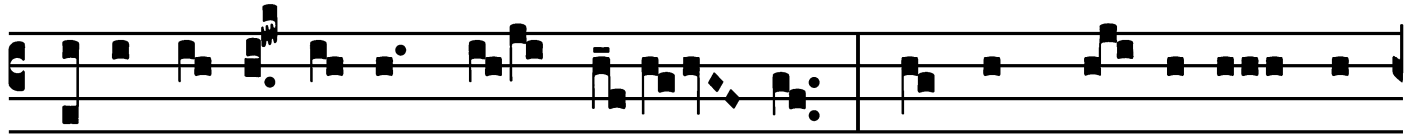
Introit

Intr.
7.

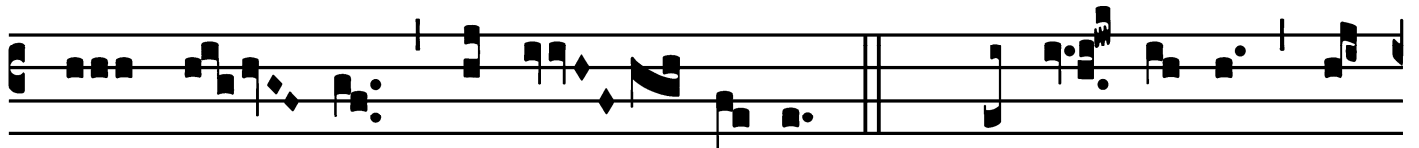
A



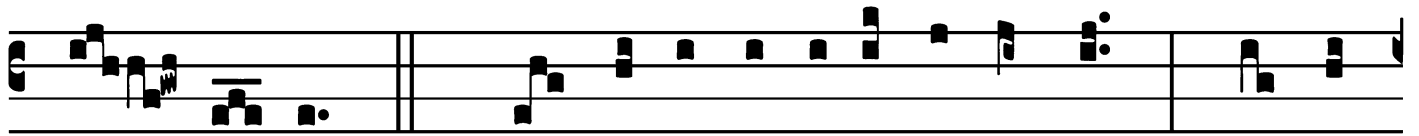
Djú-tor * et proté-ctor nóster est Dó-minus : in



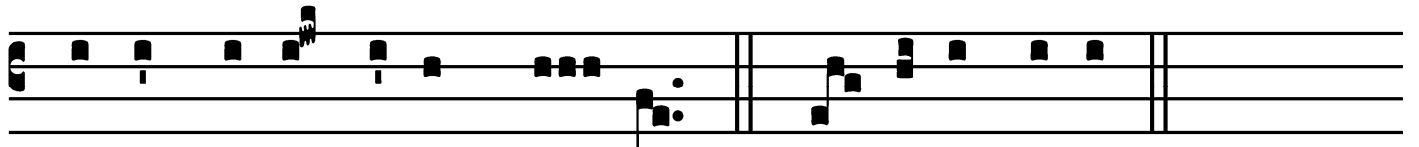
é-o læ-tá-bi-tur cor nó- strum, et in nó-mine sán-



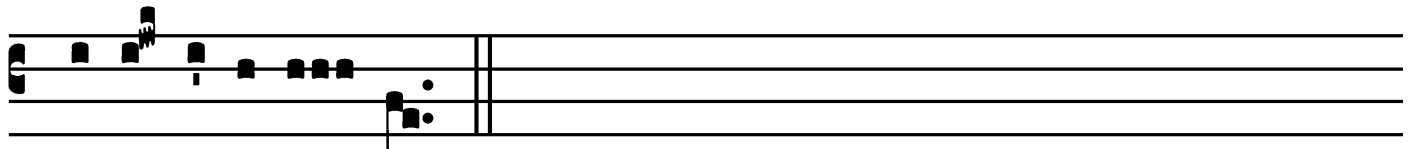
cto é- jus spe-rá- vimus. *T.P.* Alle- lú- ia, al-



le- lú- ia. *Ps.* Qui ré-gis Isra-ël, inténde : * qui de-



dú-cis vel-ut óvem Jó- seph. Gló- ri- a Pátri.



E u o u a e.

Votive Mass of St. Joseph

Gradual

Grad.

4.

D

Domine, * præ-venísti é- um in bene-di-

cti- óni- bus dulcé- di- nis : posu- í- sti in cá-

pi-te é-jus co- ró- nam de lápi-de pre-ti- ó-

so. \forall . Ví- tam

pé- ti- it, et tri- bu- í- sti é- i longi-tú-

di- nem di- é- rum in sá- cu- lum

* sá- cu- li.

Votive Mass of St. Joseph

Alleluia

8.
A L-le-lú- ia. * *ij.*

Ÿ. Fac nos innó-cu-
am, Jó- seph, decúr- re-re
ví- tam : sí- que tú- o semper tú-
ta * patro-cí- ni- o.

Votive Mass of St. Joseph

Tract

Tract.

8.

B

E-á- tus vir, * qui tímet Dó- mi-

num : in man-dá- tis é- jus

cú- pit ni- mis. ∇ . Pót- ens in térra

é-rit sémen é- jus : ge-ne- rá- ti-o re- ctó-

rum be- ne- di-cé-tur.

∇ . Gló- ri- a et di-ví-ti-æ in dómo é- jus : et

ju- stí- ti- a é- jus má- net * in sá- cu- lum

sá- cu- li.

Votive Mass of St. Joseph
Alleluia
(In Paschal Time, in place of the Gradual)

1.
A Lle-lú-ia. * *ij.*

De qua-cúmque tri-bu-la-ti-ó-ne clamá-ve-
rint ad me, exáudi-am é-os, et é-ro proté-ctor
e-ó-rum * semper.

Votive Mass of St. Joseph

Offertory

Offert.

3.

L

Au- da, * Je- rú- sa- lem, Dómi-

num : quóni- am confortá- vit sé- ras portá-

rum tu- á- rum, bene- dí- xit fí- li- is tú- is † in

te. *T.P.* † in te, alle- lú- ia, alle-

lú- ia.

Votive Mass of St. Joseph
Communion

Comm.

8.

J

Acob autem * gé-nu-it Jóseph ví-rum Ma- rí-

æ, de qua nátus est Jé- sus, qui vo-cá-tur † Chrí- stus.

T.P. † Chrí- stus, alle-lú- ia, alle-lú- ia.

