

Wednesday in Passion Week / Feria Quarta

Introit

Intr.
3.

L

Ibe-rá-tor mé- us * de géntibus i- ra-cúndis :

ab insurgéntibus in me exal- tá- bis me : a

ví- ro in-í- quo e-rí-pi- es me, Dó- mi-ne.

Ps. Dí-li-gam te Dómine, forti-túdo mé- a : * Dóminus fir-

maméntum mé-um, et re-fúgi- um mé-um, et libe- rá-tor

mé-us. Libe-rá-tor.

Wednesday in Passion Week / Feria Quarta

Gradual

(Page 1 of 2)

Grad.

3.

E

X-al- tá- bo te, * DÓ- mi- ne,

quó- ni- am susce- písti me :

nec de- le- ctá- sti in- i- mí-

cos mé- os super me.

∇. Dómine Dé- us mé-

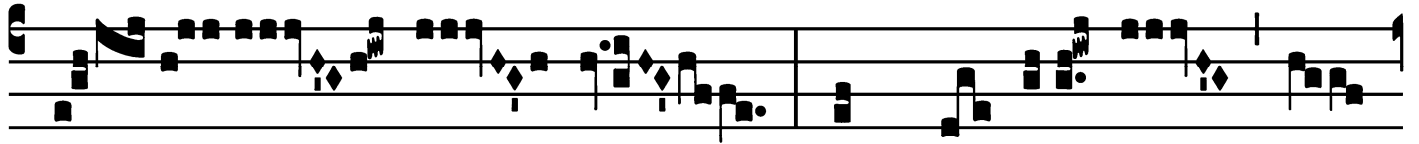
us, clamá- vi ad te, et sa-

ná- sti me : Dó-

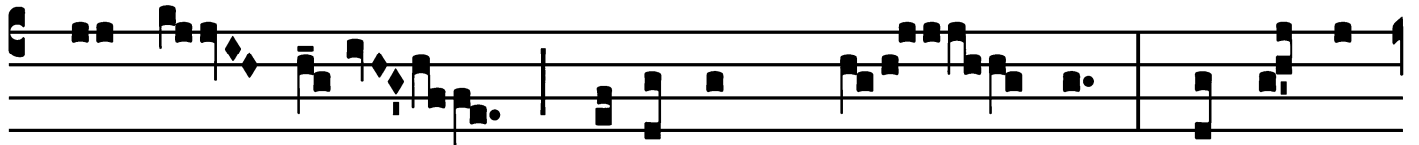
Wednesday in Passion Week / Feria Quarta

Gradual

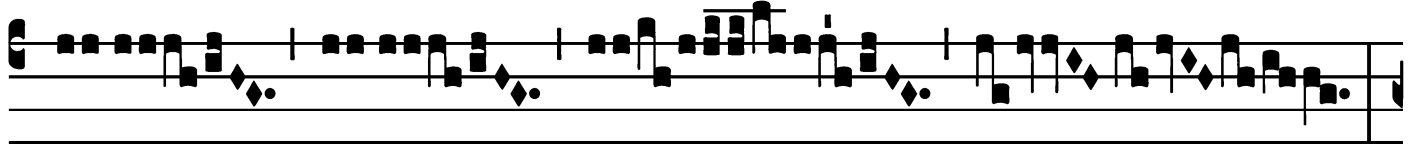
(Page 2 of 2)



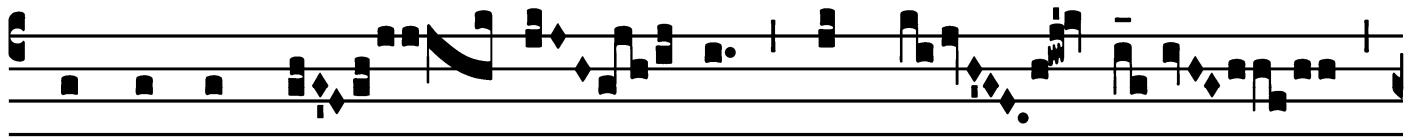
mi- ne, abstra- xí- sti ab



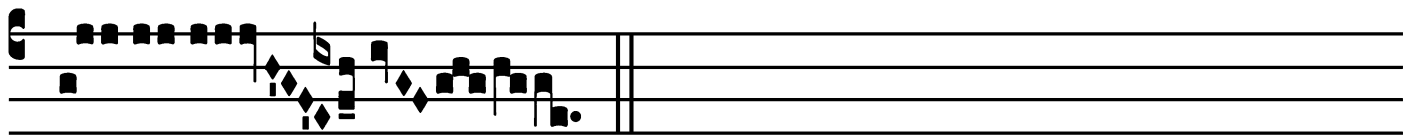
ín-fe- ris ánimam mé- am, salvá-sti



me



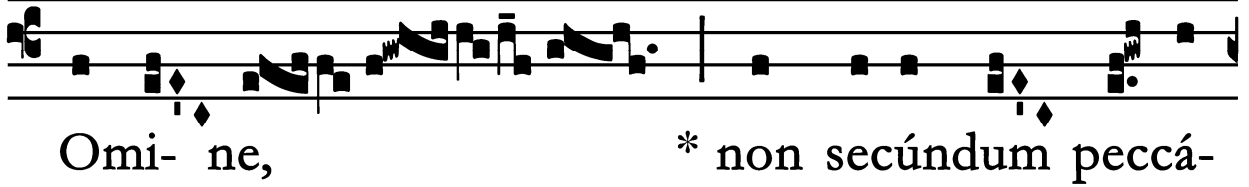
a descendén- ti- bus * in lá- cum.



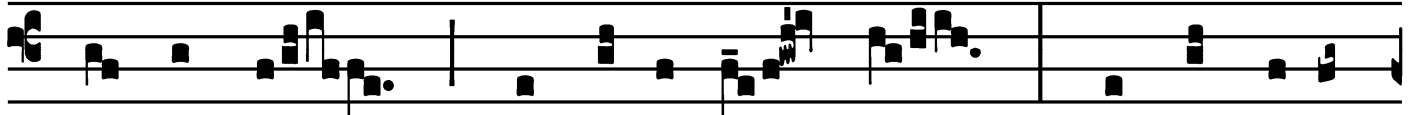
Tract
(Page 1 of 2)

Tract.
2.

D



Omi- ne, * non secúndum peccá-



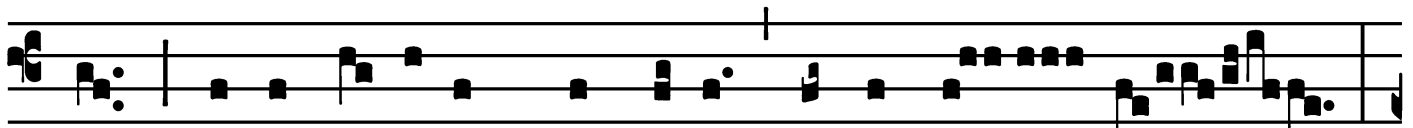
ta nóstra, quæ fé-cimus nos : neque secún-



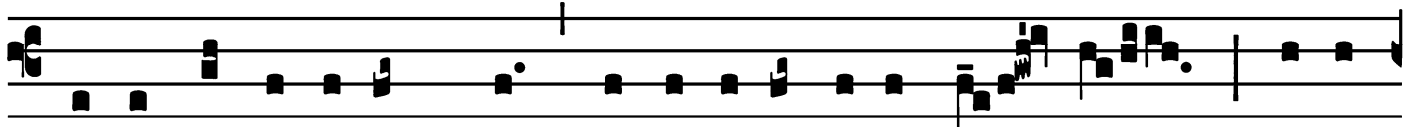
dum in-iqui-tá-tes nó- stras re-trí- bu- as nó- bis.



∇. Dó-mine, ne memí-ne-

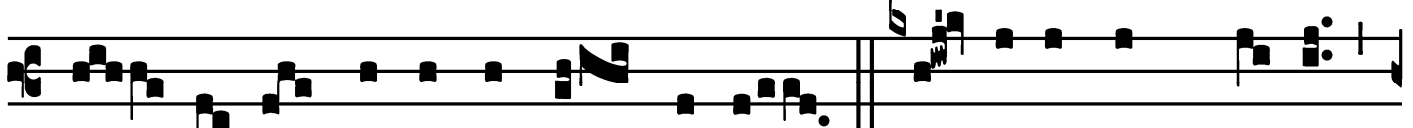


ris in-iqui- tátum nostrárum antiquá- rum :



ci-to antí-cipent nos mi-se-ricórdi-æ tú- æ, qui- a

Here all kneel.



páu- pe-res fácti súmus nimis. ∇. Adjuva nos, Dé- us

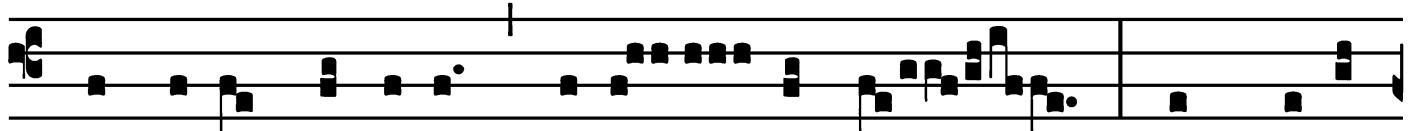
Wednesday in Passion Week / Feria Quarta

Tract

(Page 2 of 2)



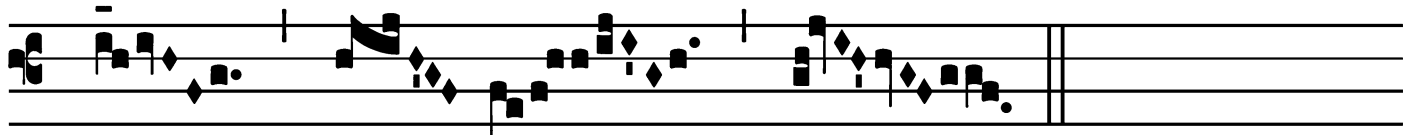
sa-lu-tá-ris nó-ster : et propter gló-ri-am nó-mi-



nis tú-i, Dómine, líbe-ra nos : et propí-



ti-us ésto peccá-tis nó-stris, pro-pter nó-men



* tú-um.

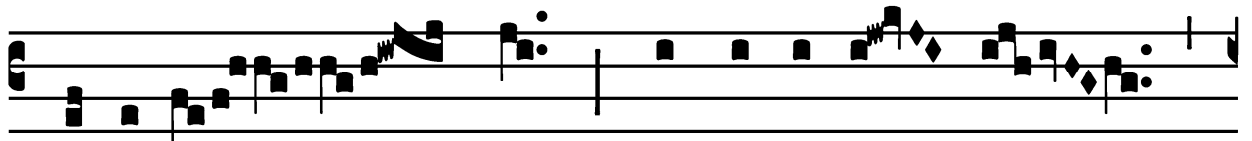
Wednesday in Passion Week / FERIA Quarta

Offertory

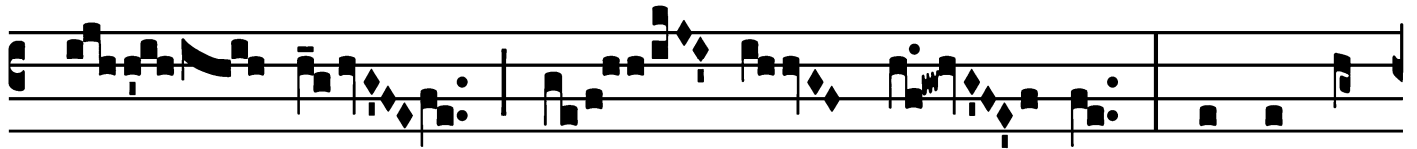
Offert.

7.

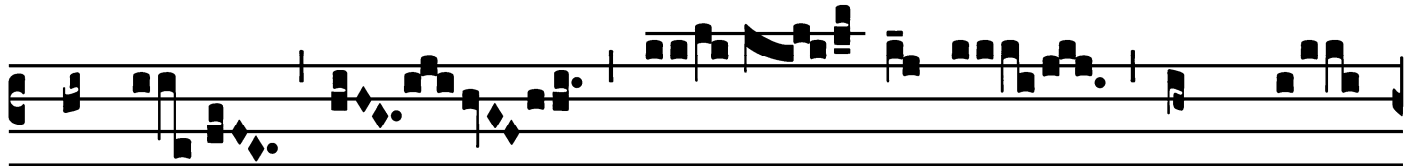
E



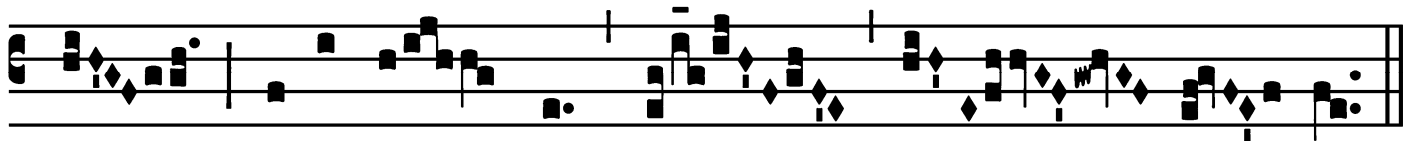
- ripe me * de in-imí- cis



mé- is, Dé- us mé- us : et ab in-



surgén- ti-bus in me



líbe-ra me, Dó- mi- ne.

Communion

Comm. 8.

L Avá-bo * inter innocén-tes má nus mé- as,
et circu- í- bo al-tá- re tú- um, Dómi-
ne : ut áudi- am vócem láudis tú- æ, et enárrem
u-ni-vér- sa mi- rabí- li- a tú- a.

