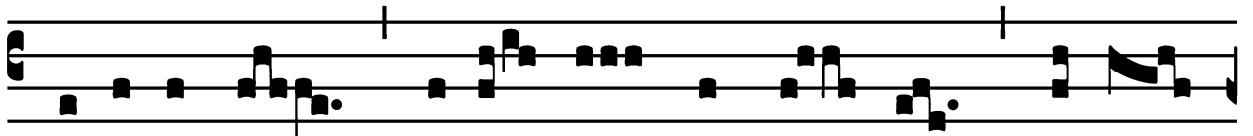


Introit

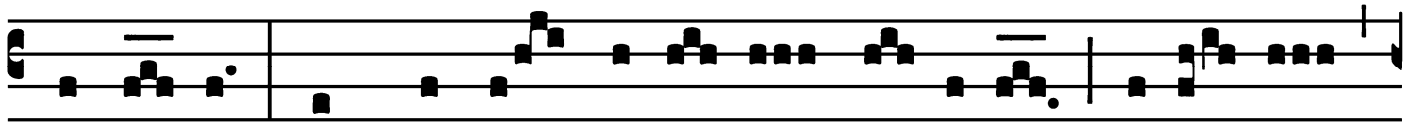
Intr.

2.

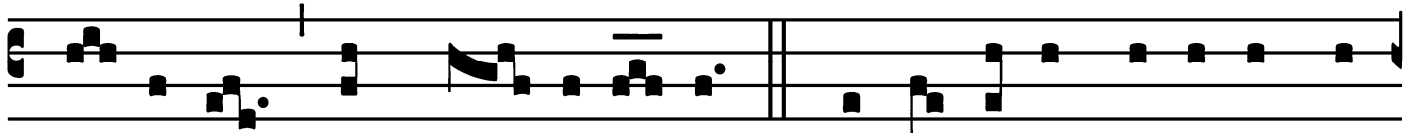
S



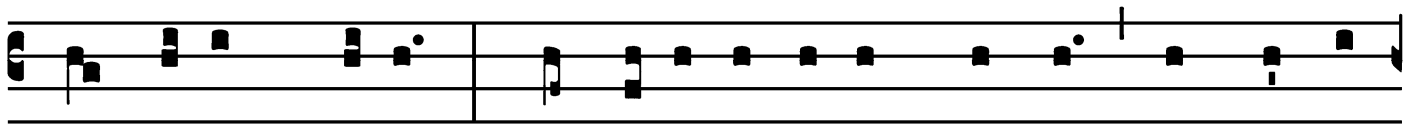
I-ti- éntes, * vení- te ad á- quas, dí- cit



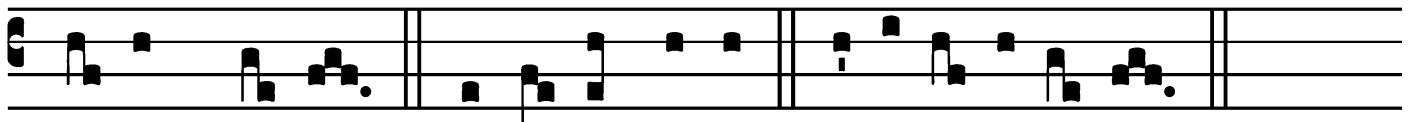
Dómi- nus : et qui non habé- tis pré- ti- um, vení- te,



bí- bi- te cum læ- tí- ti- a. *Ps.* Atté- ndi- te, pópu- le me-



us, lé- gem mé- am : * incliná- te áurem vé- stram in vérba



ó- ris mé- i. Gló- ri- a Pátri. E u o u a e.

Gradual

Grad. 3. **T** I- bi * Dómine de-re-lí-

ctus est páu- per : pu-

píl- lo tu é- ris adjú-tor.

∇. Ut quid Dómi-ne

re-cessí- sti lon-ge, déspi-cis in op-

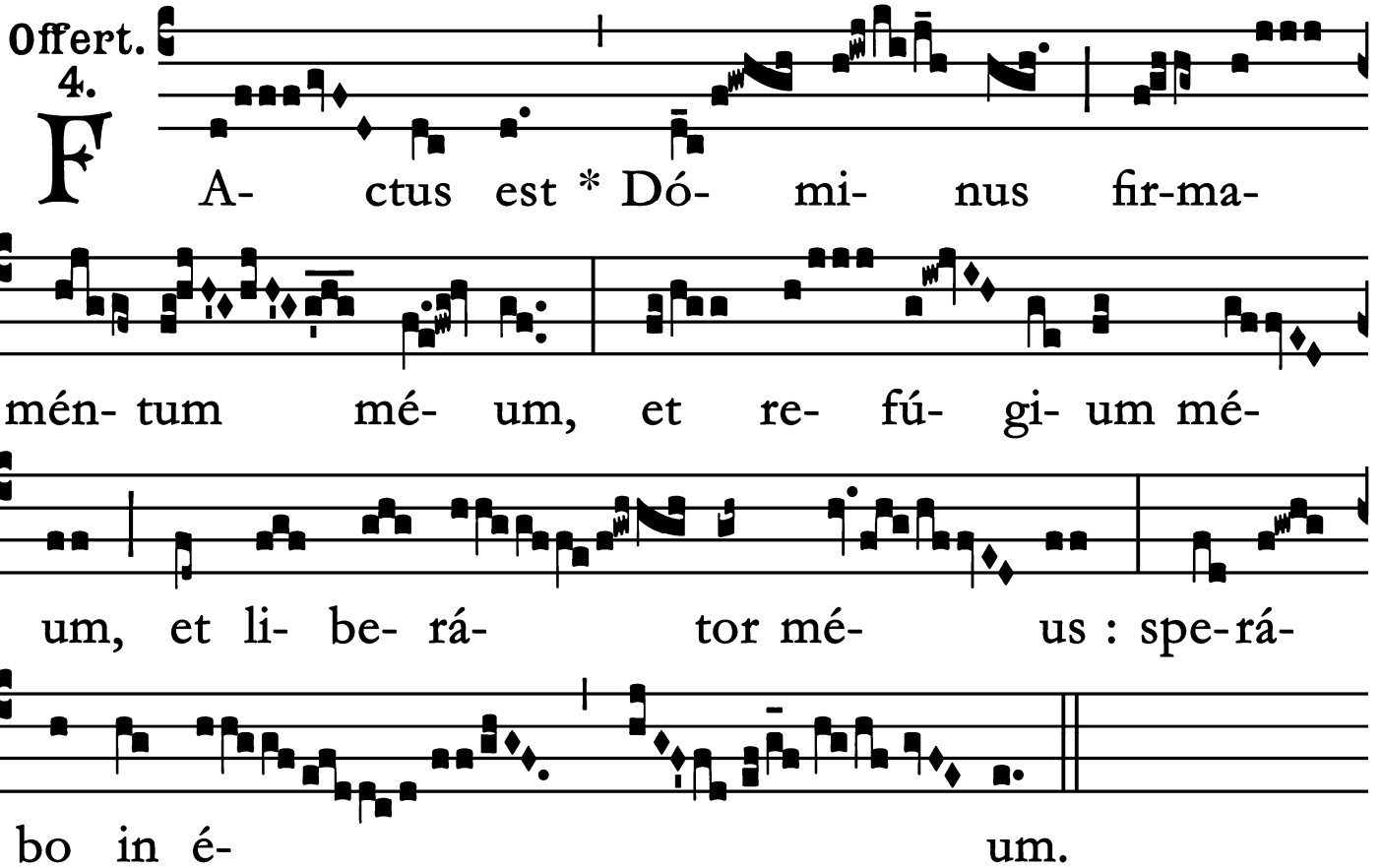
portuni- tá- ti- bus, in tri- bu- la- ti- ó-

ne? dum supér- bit ím- pi- us, incé-ndi- tur

* páu- per.

Offertory

Offert. 4.



F A- ctus est * DÓ- mi- nus fir- ma-
mén- tum mé- um, et re- fú- gi- um mé-
um, et li- be- rá- tor mé- us : spe- rá-
bo in é- um.

Communion

Comm.

2.

D

Ominus * ré- git me, et ni-hil mí-hi dé-

e- rit : in ló-co pá-scu- æ i- bi me col-

locávit : su-per áquam re-fe-cti-ónis e-ducá-

vit me.

