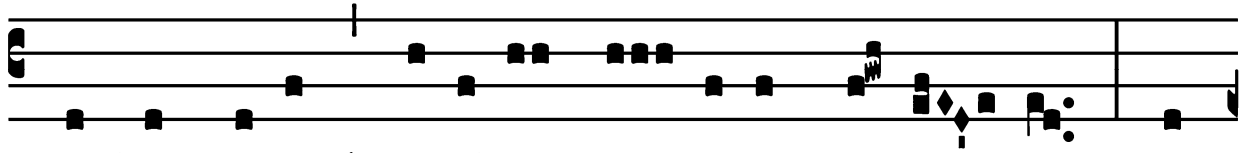


Introit

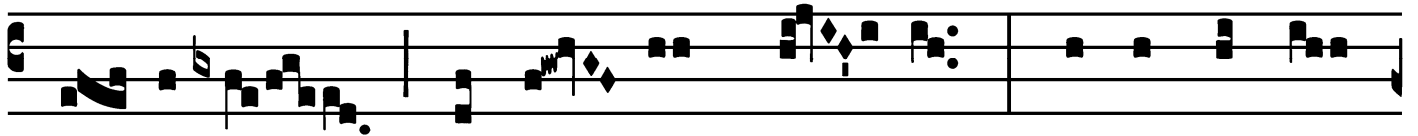
Intr.

5.

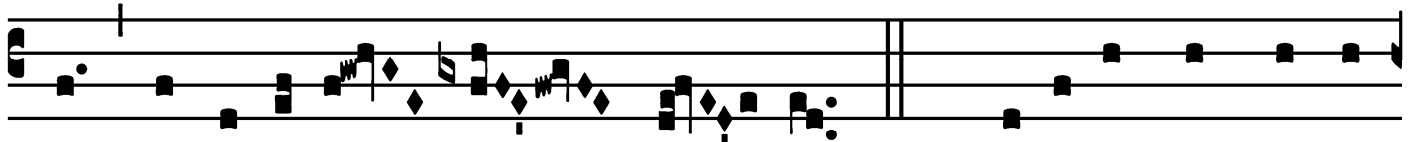
V



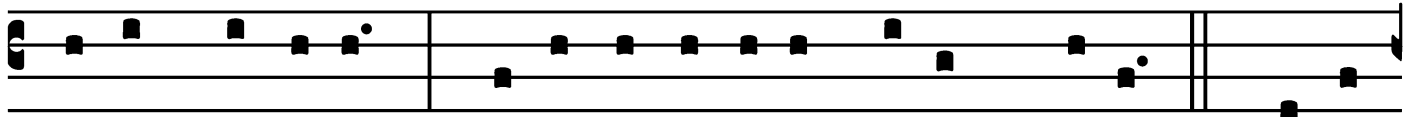
Erba mé-a * áuribus pér- cipe Dómi- ne, in-



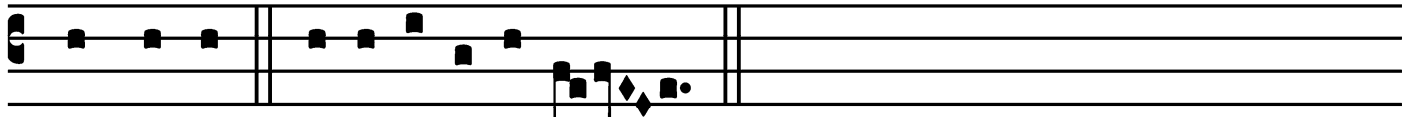
tél- li-ge clamó- rem mé- um : inténde vó-



ci o-ra-ti-ó- nis mé- æ. *Ps.* Quóni- am ad te o-



rábo, Dómine : * mane exáudi- es vócem mé-am. Gló-ri-



a Pátri. E u o u a e.

Gradual

Grad.

1.

S

I ámbu- lem * in mé- di- o úmbræ

mór- tis, non timé- bo má- la :

quóni- am tu mé- cum es, Dómine.

∞. Vír- ga tú- a, et bá-

cu- lus tú- us, í- psa me

* conso- lá- ta sunt.

Saturday in the Third Week of Lent / Sabato

Offertory

Offert.

8.

G

Réssus mé-os * dí- ri- ge Dó- mi- ne secún-

dum e-ló- qui- um tú- um : ut non

domi-né-tur

ómnis

injustí-ti- a,

Dó-

mi- ne.

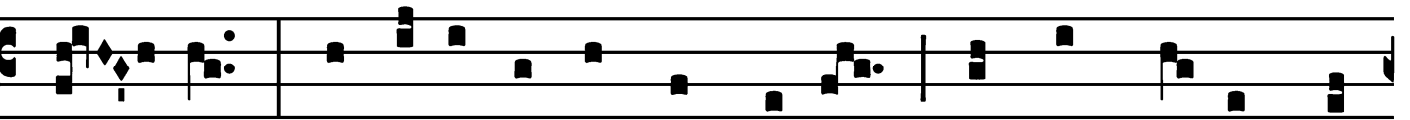
Communion

Comm.

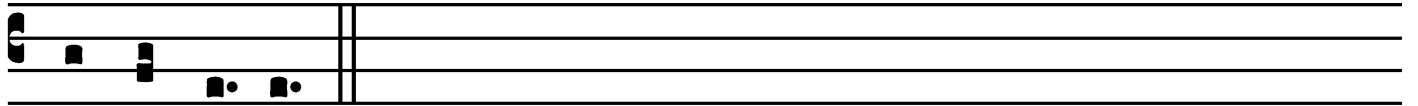
8.

N

Emo * te condemná-vit, mú-li-er? Némo, Dó-



mi- ne. Nec égo te condemnábo : jam ámpli- us nó-



li peccá-re.

