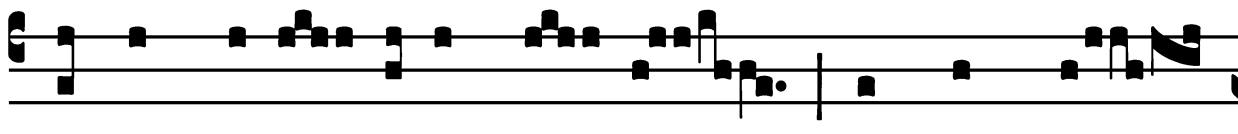


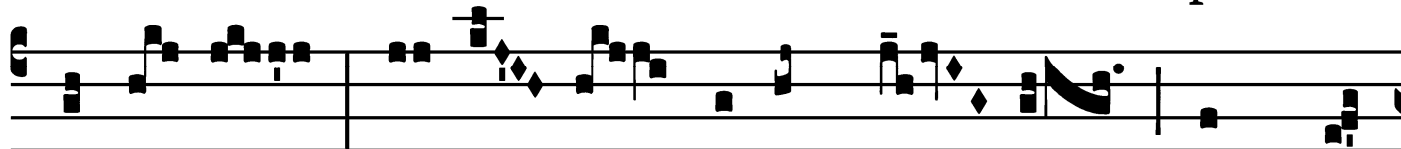
Introit

Intr.
3.

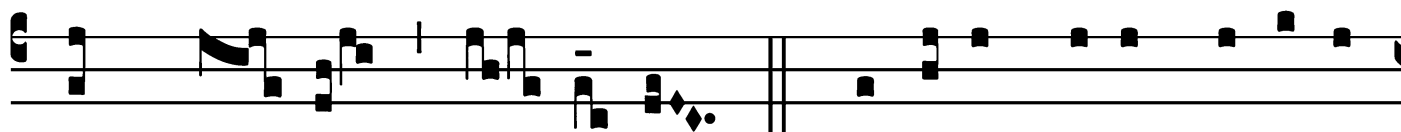


I

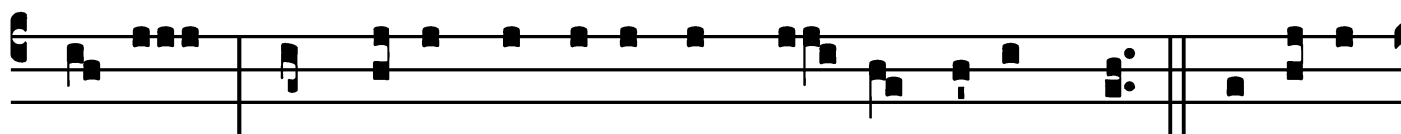
Ntret * orá- ti- o mé- a in conspé-



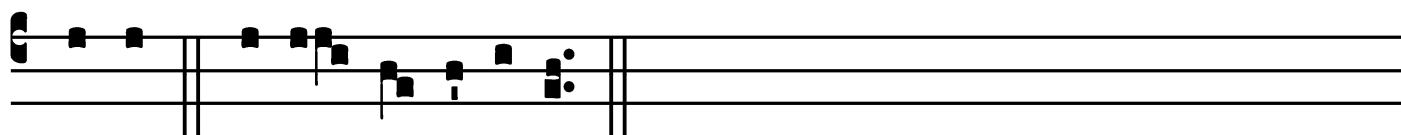
ctu tú- o : inclí- na áurem tú- am ad pré-



cem mé- am Dó- mi- ne. *Ps.* Dómine Dé- us sa- lú- tis



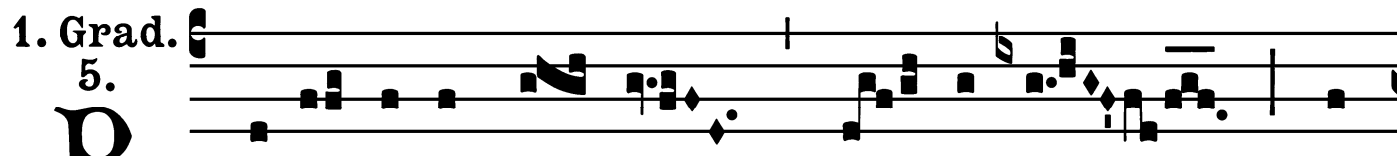
mé- æ : * in dí- e clamávi, et nó- cte coram te. Gló- ri- a



Pátri. E u o u a e.

1. Gradual

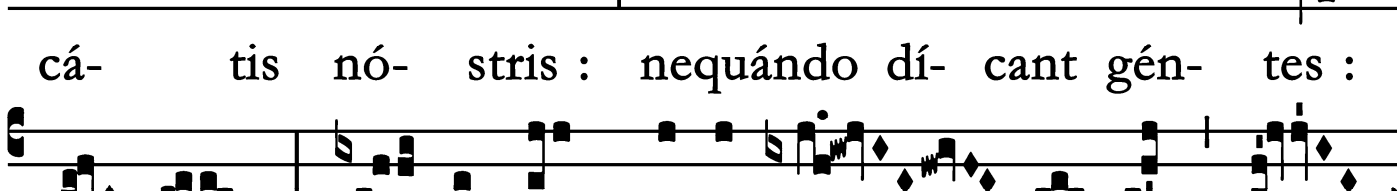
1. Grad. 5. **P**



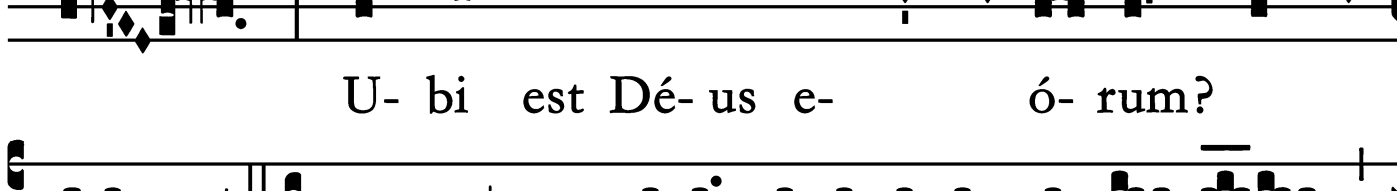
Ropí- ti- us é- sto * Dó- mi- ne pec-



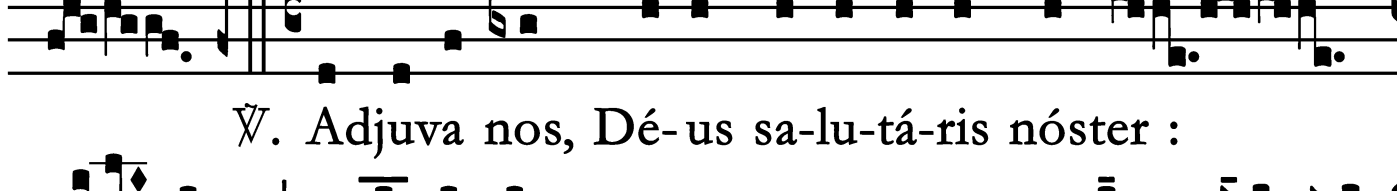
cá- tis nó- stris : nequándo dí- cant gén- tes :



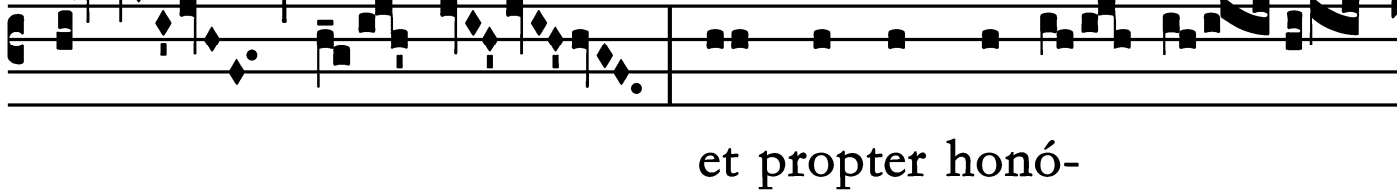
U- bi est Dé- us e- ó- rum?



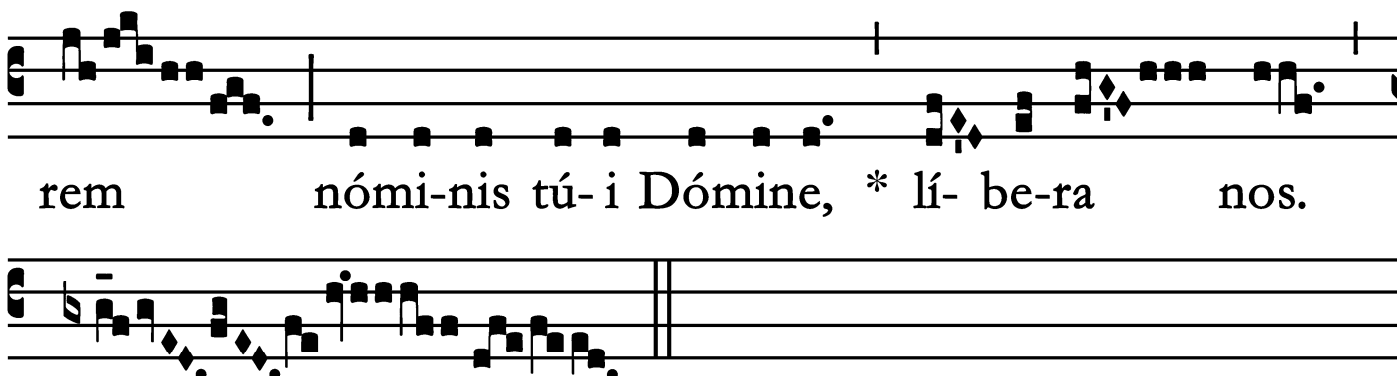
∩. Adjuva nos, Dé- us sa- lu- tá- ris nóster :



et propter honó-



rem nómi- nis tú- i Dómine, * lí- be- ra nos.



Saturday of Ember Week in Lent / Sabato

2. Gradual

2. Grad.

5.

P

Ro-té-ctor nó-ster * á- spi- ce

Dé- us, et ré- spi- ce super sér- vos

tú- os.

∇. Dómine Dé- us virtú-

tum,

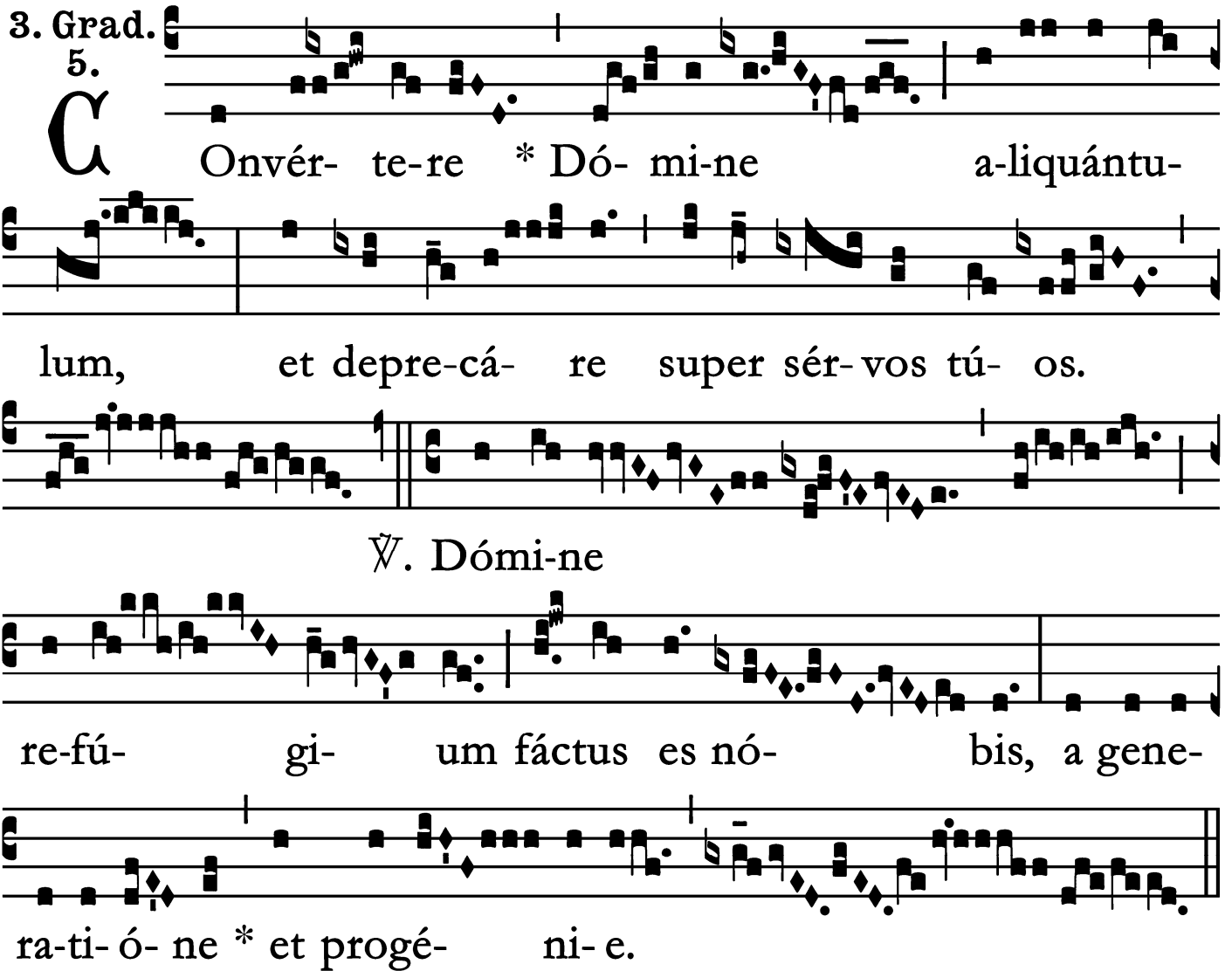
ex-

áu- di pré- ces servó- rum * tu- ó-

rum.

3. Gradual

3. Grad. 5.



Onvér- te-re * Dó- mi-ne a-liquántu-
lum, et depre-cá- re super sér- vos tú- os.
∩. Dómi-ne
re-fú- gi- um fáctus es nó- bis, a gene-
ra-ti- ó- ne * et progé- ni- e.

4. Gradual

4. Grad.

7.

D

I-rigá-tur

* o-rá-ti-o mé-

a sicut in-

cénsum in conspéctu tú-o,

Dó-mine.

Ÿ. E-levá-

ti-o

mánu-um

me-á-

rum sacri-fí-ci-

um * vesper-tí-

num.

Saturday of Ember Week in Lent / Sabato

Tract

Tract.

8.

L

Audá- te * Dó-minum, ómnes géntes :

et collau- dá- te é- um, ó-mnes

pó- pu-li. *∇*. Quóni- am confirmá- ta

est su- per nos mi-se- ricór-di- a é- jus :

et vé-ri- tas Dómi- ni má- net * in

æ-tér-

num.

Saturday of Ember Week in Lent / Sabato

Offertory

Offert.

8.

D

Omi-ne * Dé- us sa-lú- tis mé- æ, in dí-

e clamá- vi, et nó-cte co-ram te : íntret o-rá-

ti- o mé- a in conspéctu tú- o, Dómi- ne.

Saturday of Ember Week in Lent / Sabbato

Communion

Comm.

2.

D

Omi- ne * Dé-us mé-us in te spe-rávi :

líbe-ra me ab ómni- bus persecuéntibus me, et

é-ri- pe me.

