

Introit

Intr.

4.

R

Emi-nisce-re * mi-se-ra-ti-ó-num tu-á-rum,

Dómi-ne, et mi-se-ri-cór-di-æ tú-æ, quæ a sáe-

cu-lo sunt : ne unquam domi-néntur nó-bis in-imí-ci

nó-stri : líbe-ra nos Dé-us Is-ra-ël ex ómni-

bus angú-sti-is nó-stris. *Ps.* Ad te Dómine

levávi á-nimam mé-am : * Dé-us mé-us in te confído,

non e-rubéscam. Gló-ri-a Pátri. E u o u a e.

Gradual

Grad.

5.

T

Ribu-la- ti- ó-nes * córdis mé- i di- la-

tá-tæ sunt : de necessi-tá-ti-bus mé- is é-ripe

me, Dó- mi- ne. \forall . Ví-

de humi- li- tá-tem mé- am, et la-

bó- rem mé-um :

et dimítte ó- mni- a peccá-ta * mé-

a.

Tract
(Page 1 of 2)

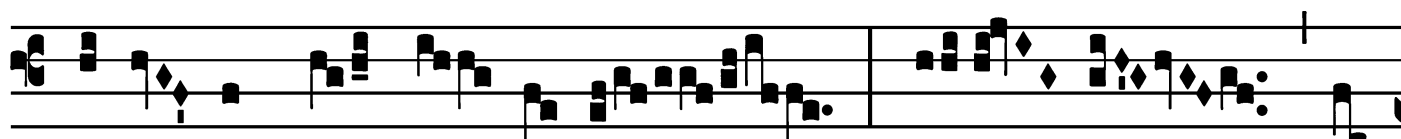
Tract.

2.

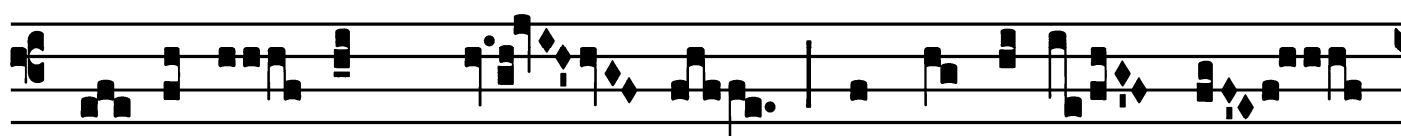
D



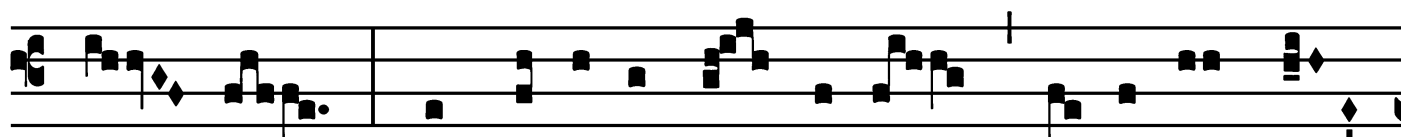
E ne- ces-si-tá-ti- bus * mé- is



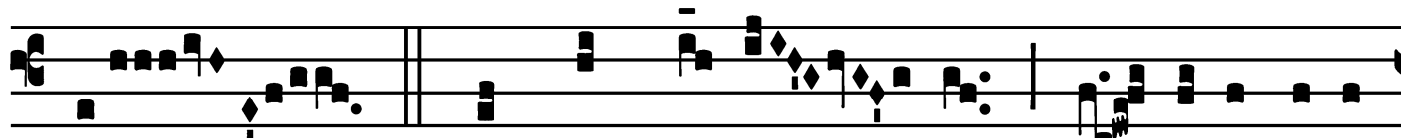
é-ri- pe me, Dó- mi-ne : ví- de hu-



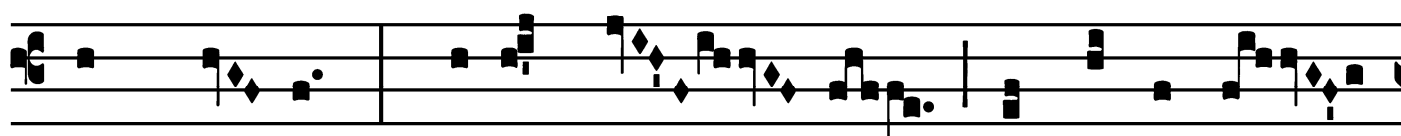
mi- li-tá- tem mé- am, et la-bórem mé-



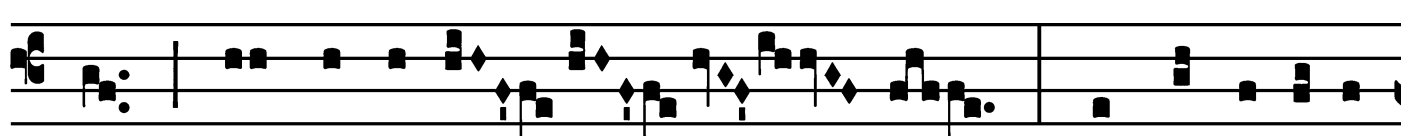
um : et dimítte ó-mni- a peccá-ta mé-



a. V . Ad te, Dómi- ne, le- vávi áni-



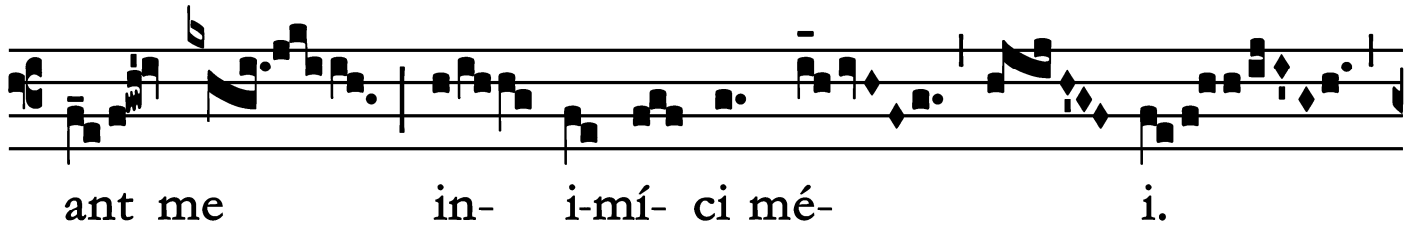
mam mé- am : Dé-us mé- us, in te confí-



do, non e-rubé- scam : neque irríde-

Wednesday of Ember Week in Lent / Feria Quarta

Tract
(Page 2 of 2)



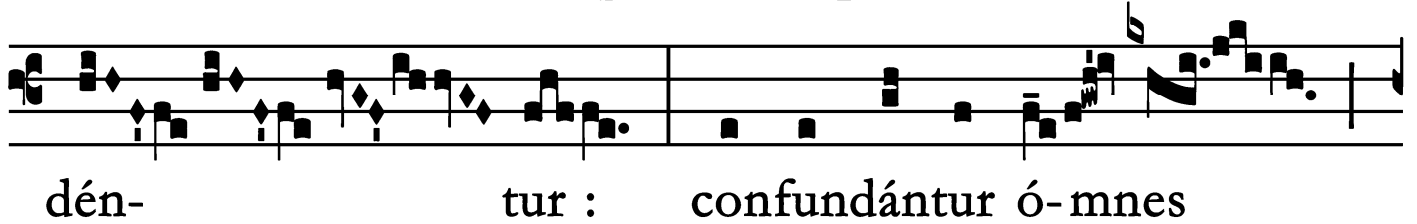
ant me in- i-mí- ci mé- i.



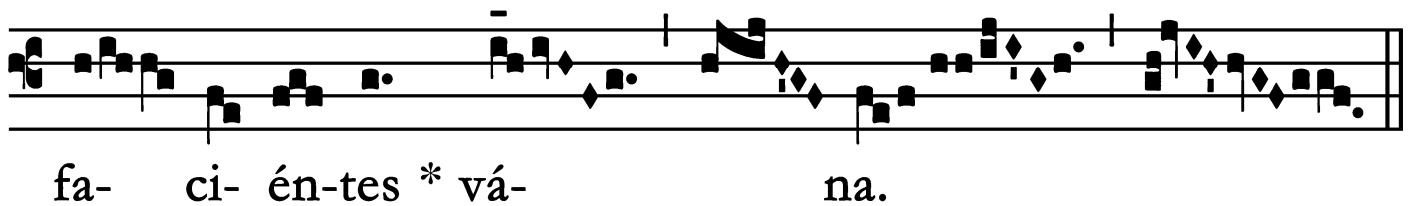
V. Ete- nim u- nivér-



si qui te expé- ctant, non confun-



dén- tur : confundántur ó- mnes



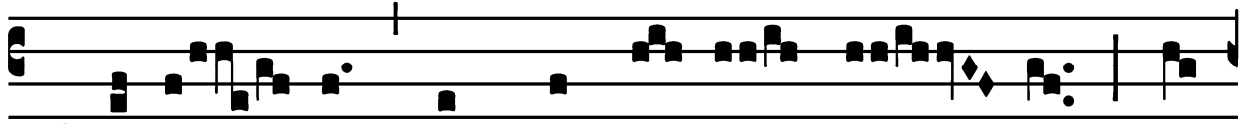
fa- ci- én-tes * vá- na.

Offertory

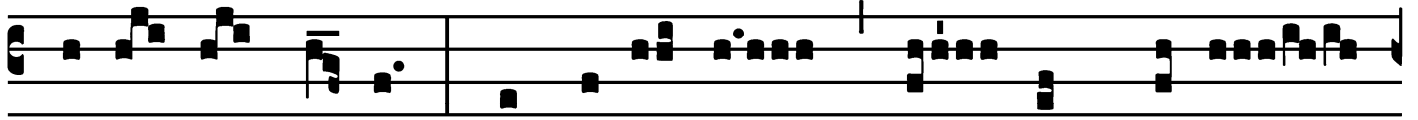
Offert.

2.

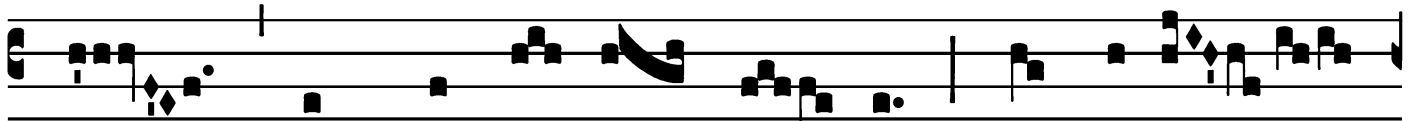
Ω



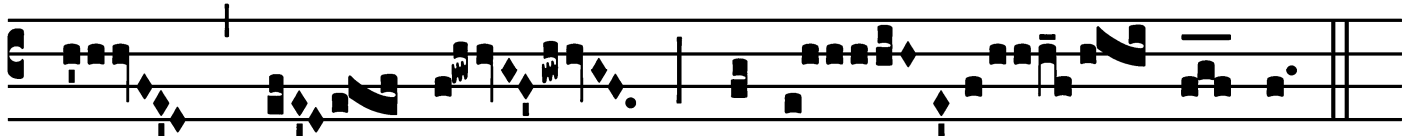
Edi-tá- bor * in mandá- tis tú- is, quæ



di-lé- xi valde : et levá- bo má- nus mé- as



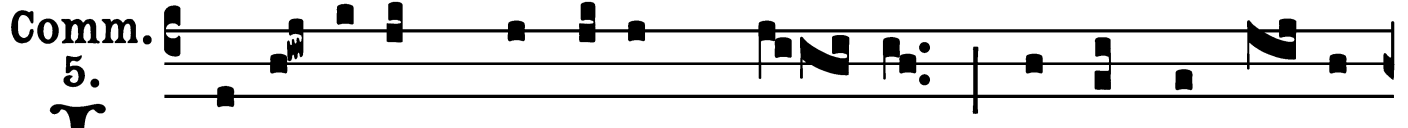
ad mandá- ta tú- a, quæ di-lé-



xi, alle- lú- ia.

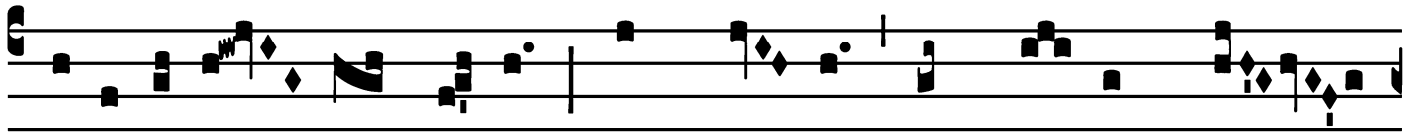
Wednesday of Ember Week in Lent / Feria Quarta

Communion



I

Ntél-lige * clamórem mé- um : inténde vó- ci



ora-ti-ó- nis mé- æ, Rex mé- us, et Dé- us mé-



us : quóni- am ad te o-rábo, Dó- mi- ne.

