

Introit

Intr. 3.
h Umi- li- á- vit * semet-ípsum Dóminus Jé- sus

Chrí- stus usque ad mórtem, mórtem autem crú-
cis : propter quod et Dé- us exaltá- vit íl- lum, et doná-
vit íl- li nómen, quod est super ó- mne
nó- men. *Ps.* Mi- se- ri- córdi- as Dómi- ni in ætérnum can-
tá- bo : * in gene- ra- ti- ónem et gene- ra- ti- ónem.

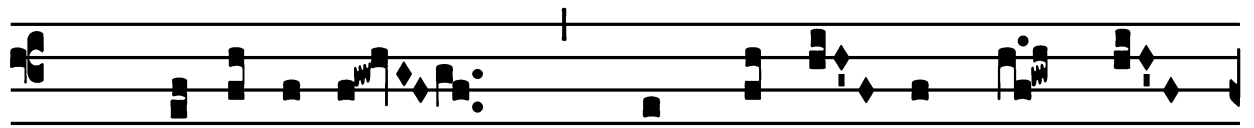
Gló- ri- a Pátri. E u o u a e.

Gradual

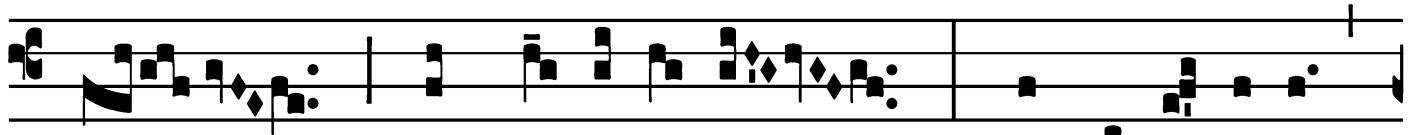
Grad.

2.

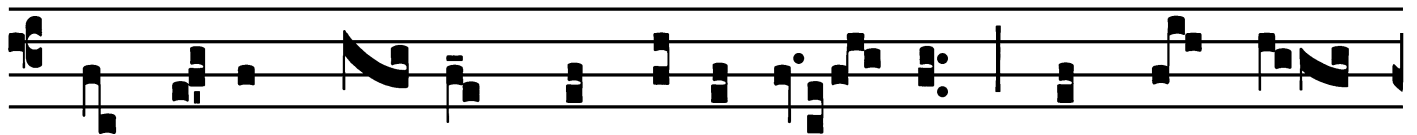
I



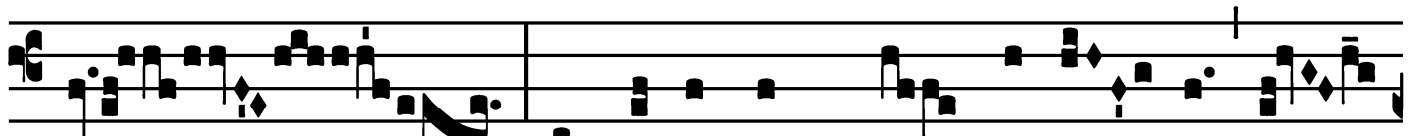
Mpropé-ri- um * exspectá- vit cor mé-



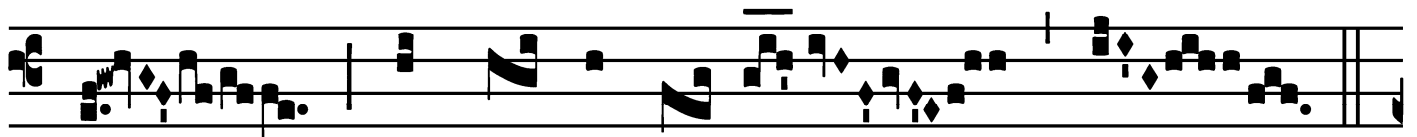
um, et mi-sé-ri- am : et sustí-nu- i,



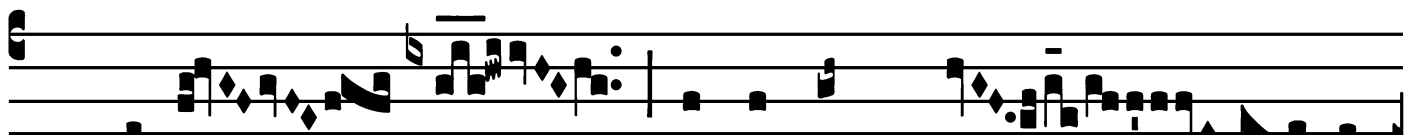
qui simul mé- cum contrista-ré- tur, et non fú-



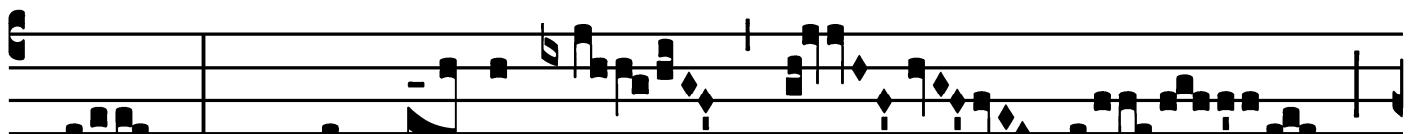
it : conso-lántem me quæ-sí- vi,



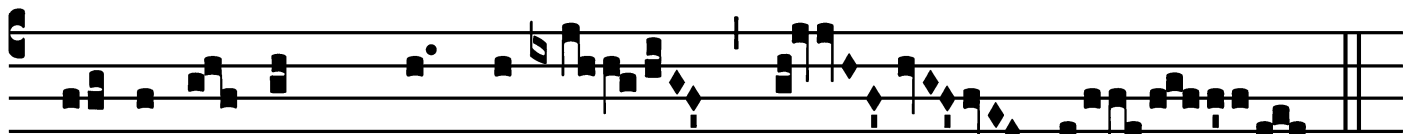
et non invé- ni.



∇. Dedé- runt in éscam mé- am



fel, et in sí- ti mé- a



po- tavé- runt me * a-cé- to.

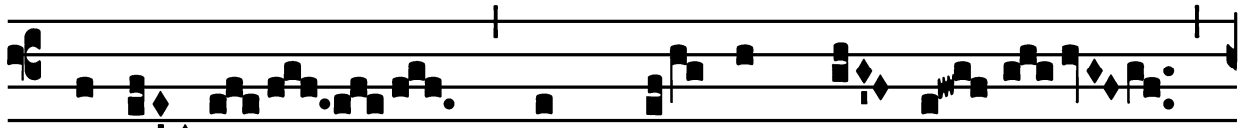
Tract

(Page 1 of 2)

Tract.

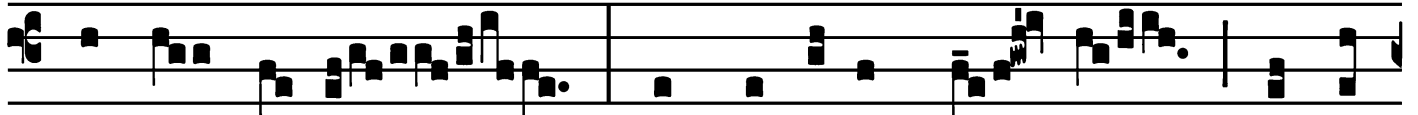
2.

V



Ere

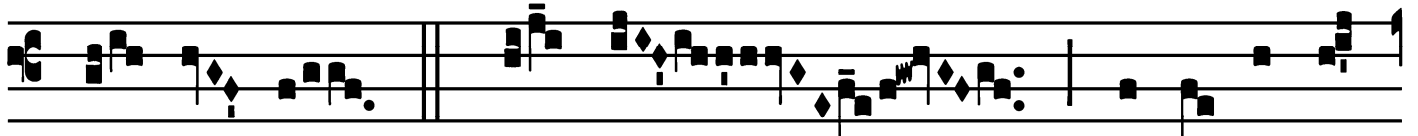
* languó- res nóstros



ipse tú- lit,

et do-lóres nó- stros

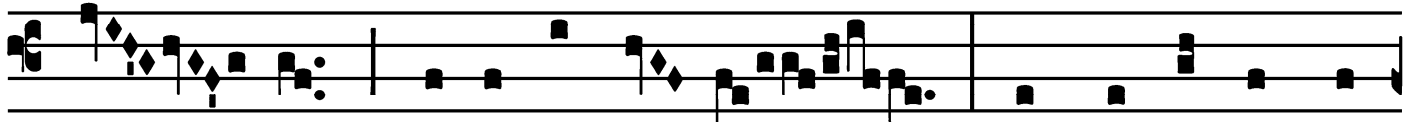
ipse



por- tá- vit.

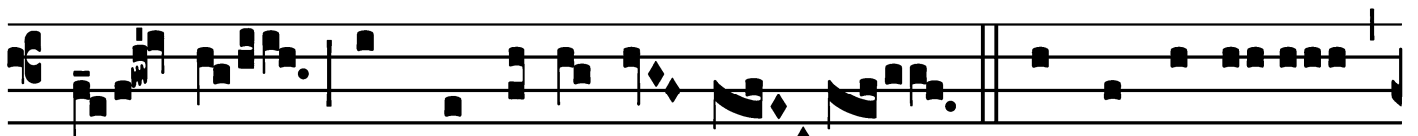
∞. Et nos

pu- tá- vimus



é- um qua- si lepró- sum

et percússum a



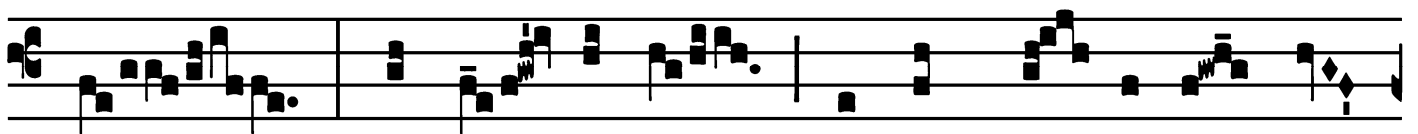
Dé- o, et humi- li- á- tum.

∞. Ipse autem



vulne- rá- tus est

propter in- iqui- tá- tes nó-



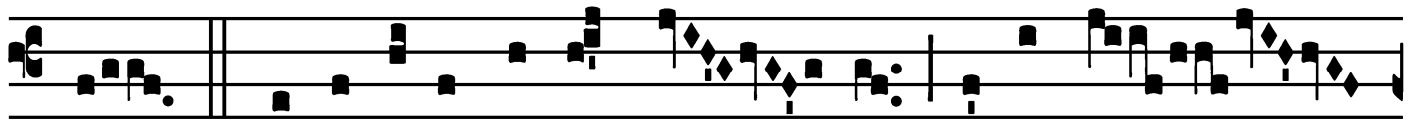
stras,

attrí- tus est

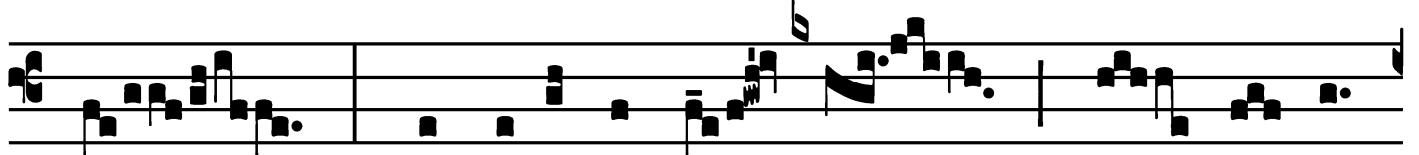
propter scé- le- ra nó-

Tract

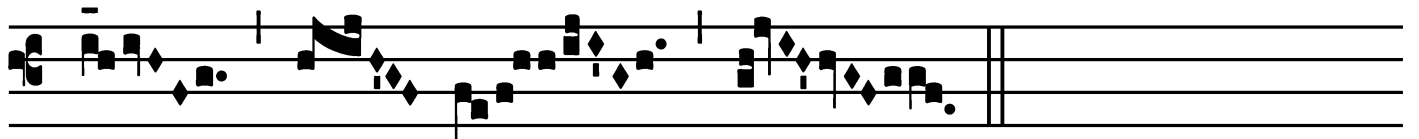
(Page 2 of 2)



stra. *V̇*. Disciplína pá-cis nó- stræ super é-



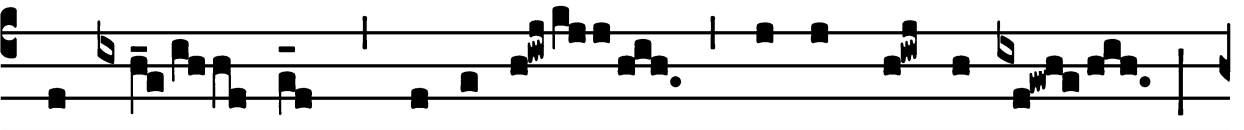
um : et livó-re é- jus sa- ná- ti *



sú- mus.

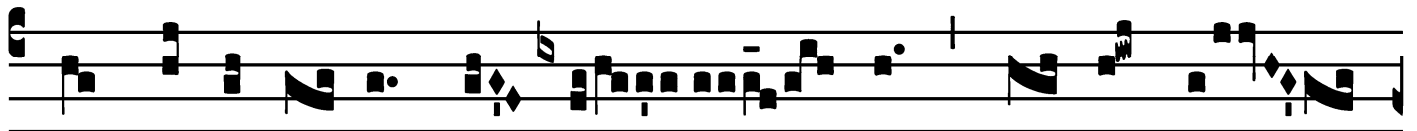
Offertory

Offert.
6.

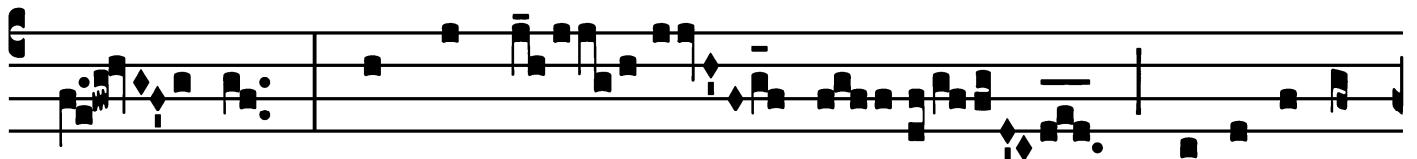


I

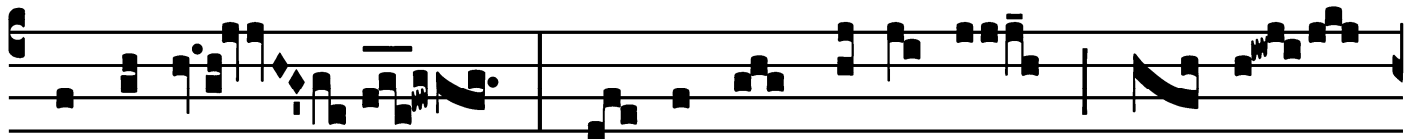
Ngrés- sus * A-aron taberná-cu-lum,



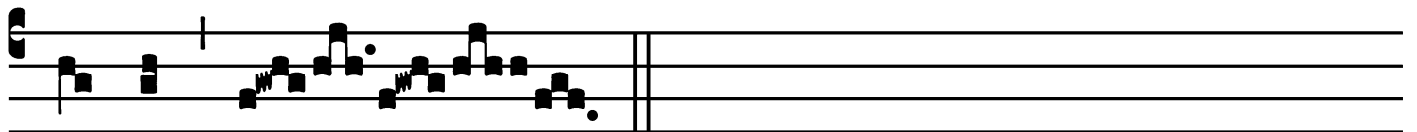
ut ho-locáustum of- fér- ret su- per al-



tá- re pro peccá- tis fi-li- órum

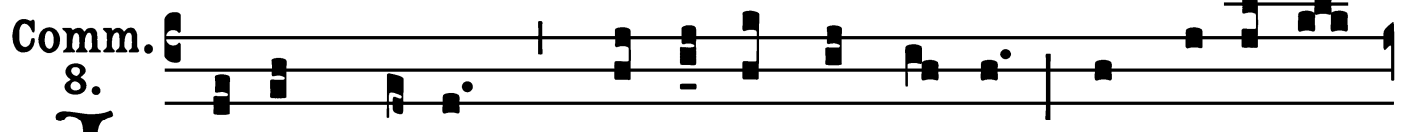


Isra- ël, tú- ni-ca líne- a in-dú-



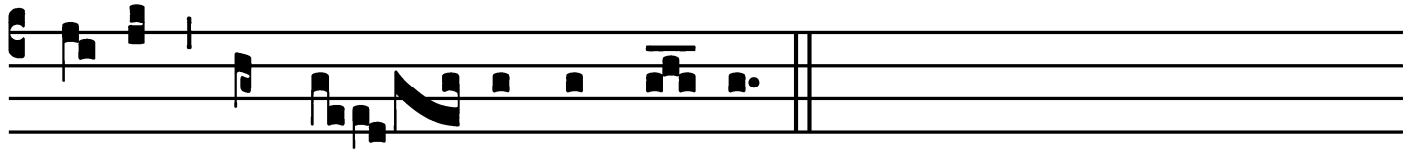
tus est.

Communion



J

Oseph autem * mercá-tus síndo-nem, et depónens



é- um, invól- vit síndo- ne.

