

Introit

Intr.
1.
V



Endi-tum jú- stum * non de-re-líquit DÓ-minus,
sed a pecca-tó-ribus libe-rá- vit é- um : et in vín-
cu-lis non de-re- líquit íl- lum, donec afférret íl-
li scé-ptum ré-gni. *Ps.* Nóvit Dóminus dí-es immacu-
la-tó-rum : * et he-rédi-tas e-órum in æ- ténum é- rit.
Gló-ri- a Pátri. E u o u a e.

Gradual

(Page 1 of 2)

Grad.

8.

D

E- us, * venérunt gén- tes in he-re-

di-tá- tem tú- am : pol- lu-é- runt

tém- plum sánctum tú- um : posu- é-runt

Jerú- sa-lem in pomó- rum custó- di-

am.

∇. Effu-dé- runt sánqui-

nem servó- rum tu-ó- rum

tamquam á- quam, et non é-

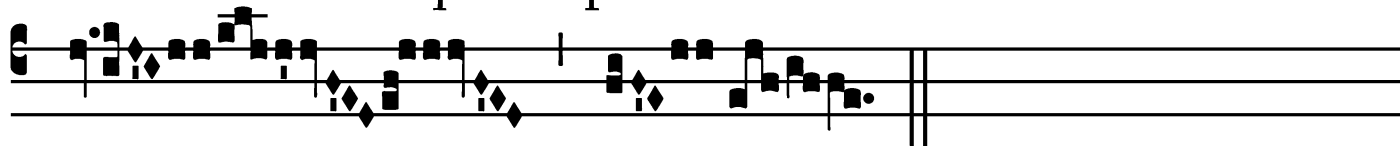
Bd. Thomas Percy, Earl of Northumberland, Martyr - August 26
Proper Mass in the Dioceses of Hexham & Newcastle, Leeds and Middlesbrough, England

Gradual

(Page 2 of 2)



rat * qui se-pe- lí-



ret.

Alleluia

2.
A



Lle-lú-ia. * *ij.* ¶. Sá- lus au-
tem justó- rum a Dó-
mino et salvá- bit é- os,
qui- a spe-ravérunt * in é- o.

Offertory

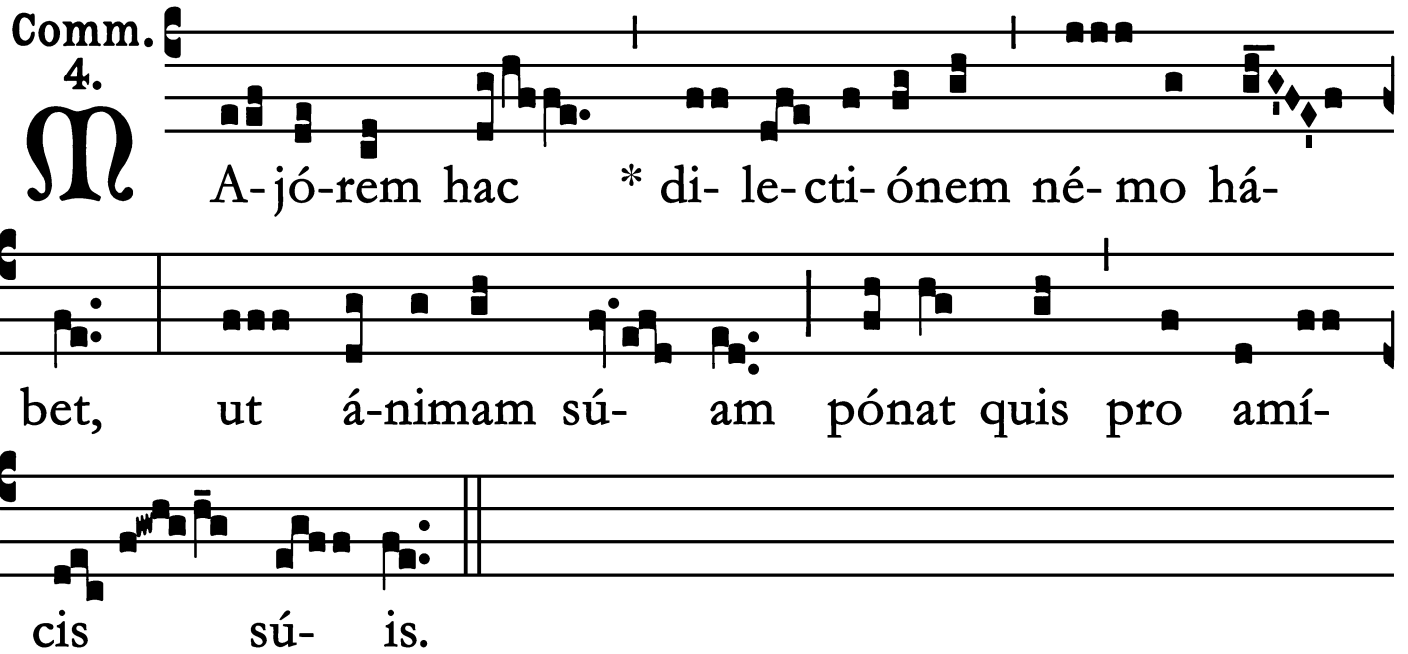
Offert.
6.



C Ertámen * for- te dé-dit íl- li, ut
vín- ce- ret : dé-dit íl- li cla- ri- tá-tem æ-
tér- nam.

Communion

Comm. 4.
M



A-jó-rem hac * di- le-cti-ónem né- mo há-
bet, ut á-nimam sú- am pónat quis pro amí-
cis sú- is.

Missae Propriae Dioecesium Angliae,
Desclée et Socii, 1909.
Supplement to Graduale Romanum No. 696 (1908).
Melodies edited by the Benedictines of Solesmes.

