

Introit

Intr.
3.

V

Eni * de Líba- no, spón- sa mé- a,

véni de Líba- no, vé- ni : vulne-rásti cor mé- um,

sóror mé- a spónsa, vulne-rá-sti cor mé- um.

Ps. Laudáte, pú-e-ri, Dómi-num, * laudáte nó-men Dómi-

ni. Gló-ri-a Pátri. E u o u a e.

Feast of St. Thérèse of the Child Jesus, Virgin and Doctor - Oct. 3

Gradual

Grad.

5.

G

Onfí- te-or tí-bi, * Pá- ter, Dó- mine có-li et

tér- ræ, qui- a abscondísti hæc a sapi-én-

ti- bus et prudén- ti-bus, et reve- lásti é- a

párvu- lis. Ψ . Dó- mine

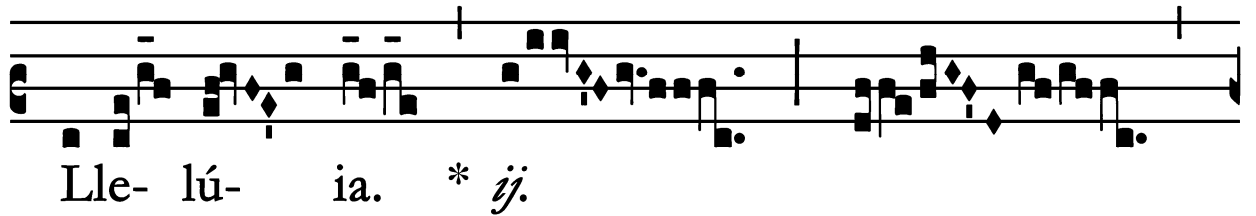
spes mé- a a juventú-

te * mé- a.

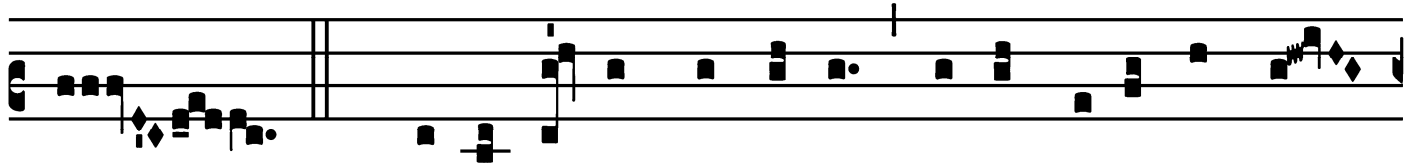
Alleluia

(Page 1 of 2)

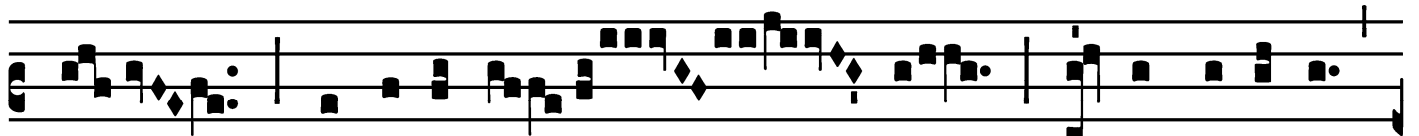
7.
A



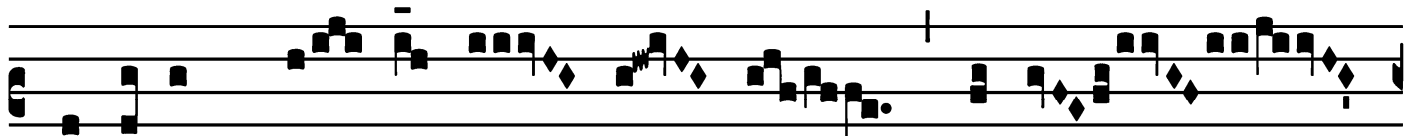
Lle- lú- ia. * ij.



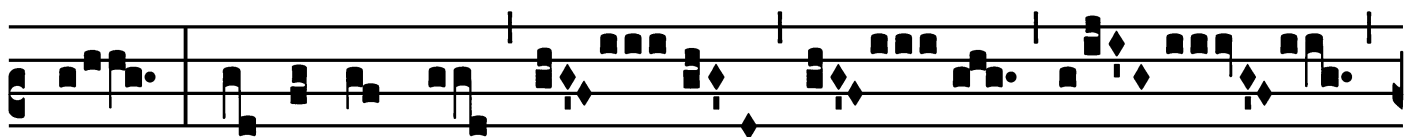
¶. Qua-si ró-sa plantá-ta super rívos aquá-



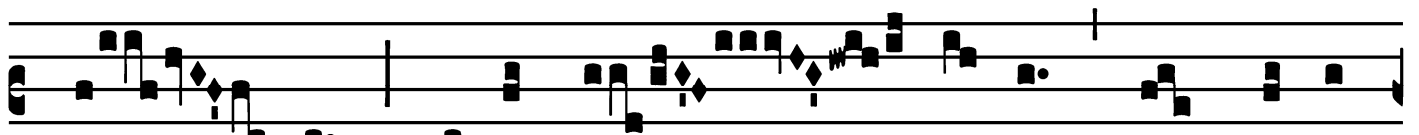
rum fructi-fi-cá- te : qua-si Líbanus



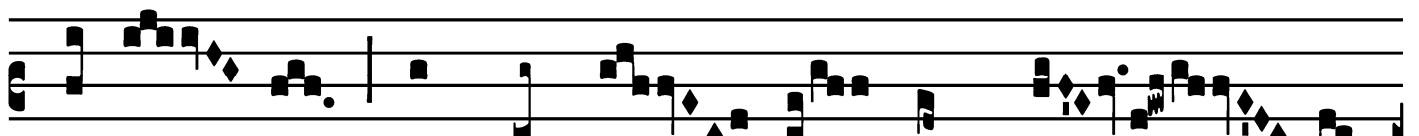
odórem su- a-vi- tá- tis habé-



te : flo-ré-te fló-



res, qua-si lí- li- um, et dá-te



odó- rem, et frondé- te in grá- ti-

Alleluia

(Page 2 of 2)

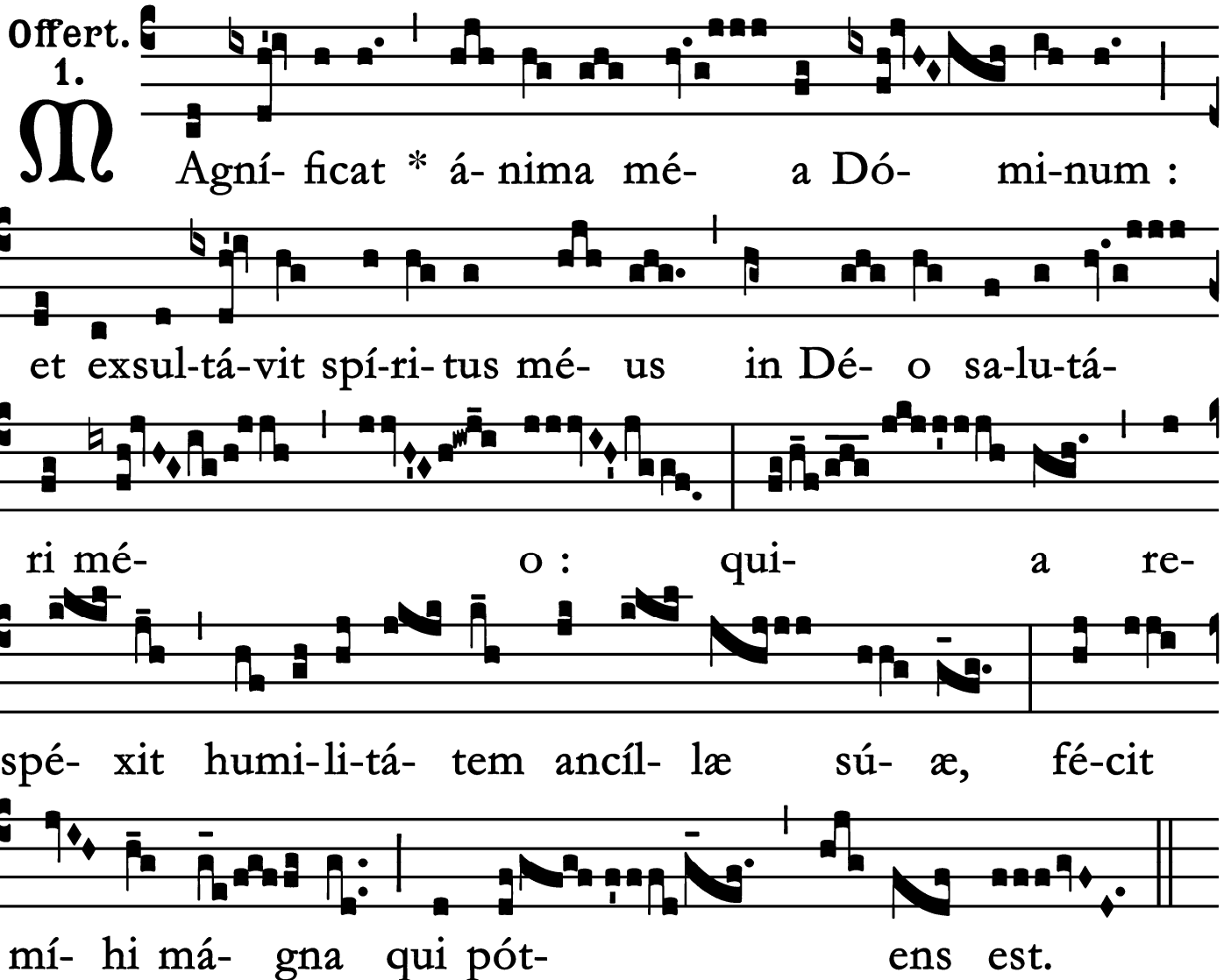
am, et collaudá-te cán-ti-cum, et benedí-ci-te Dó-

mi-num * in opé-ri-bus

sú-is.

Offertory

Offert. 1.



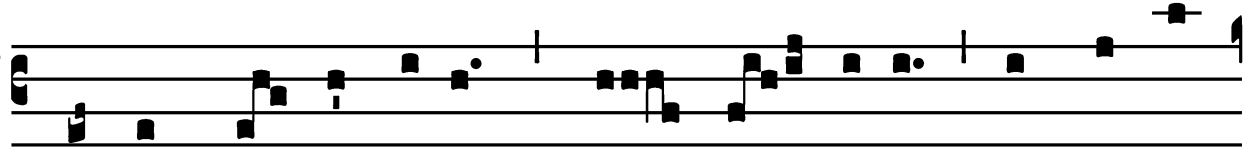
M Agní- ficat * á- nima mé- a Dó- mi-num :
et exsul- tá- vit spí- ri- tus mé- us in Dé- o sa- lu- tá-
ri mé- o : qui- a re-
spé- xit humi- li- tá- tem ancíl- læ sú- æ, fé- cit
mí- hi má- gna qui pót- ens est.

Communion

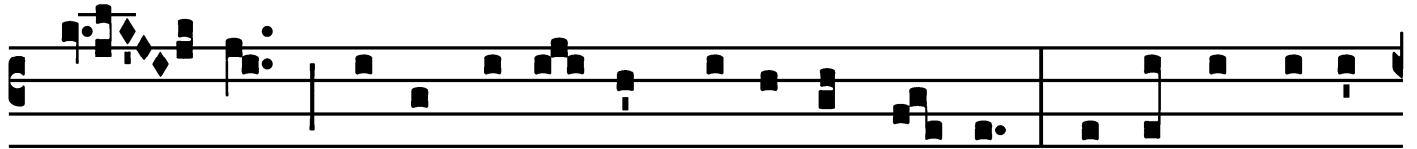
Comm.

7.

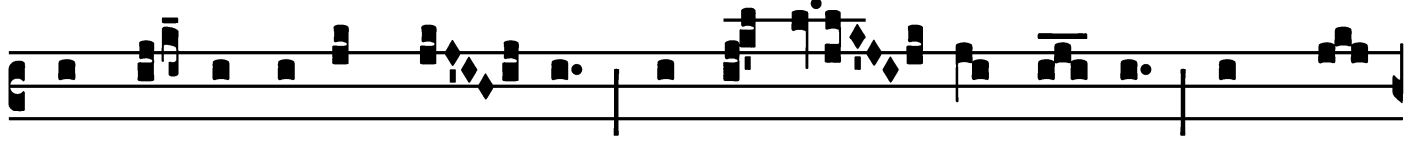
C



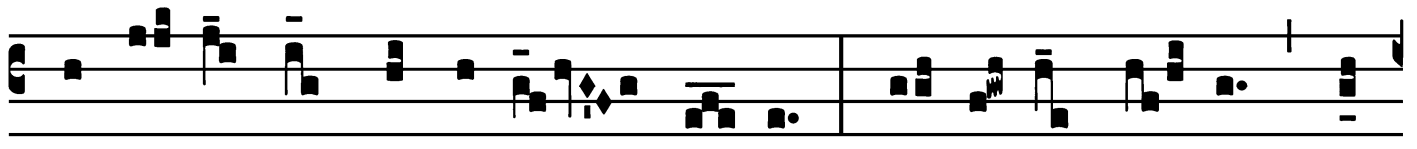
Ircumdú- xit é- am, * et dó- cu- it et custo-



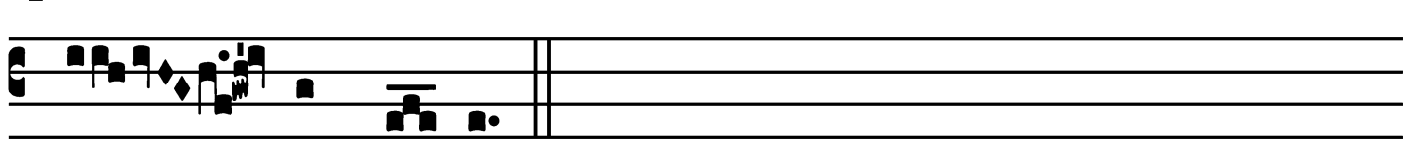
dí- vit qua- si pupíl- lam ócu- li sú- i. Sic- ut áqui- la



expándit á- las sú- as, et assúm- psit é- am, atque



portá- vit in húme- ris sú- is. Dó- mi- nus só- lus dux



é- jus fú- it.

