

Introit

Intr. 6.

N mé- di- o * Ecclé- si- æ apé- ru- it os
é- jus : et implé- vit é- um Dómi- nus spí- ri- tu sa-
pi- énti- æ, et intel- léctus : stó- lam gló- ri- æ
índu- it é- um. *Ps.* Bónum est confi- té- ri Dómino : *
et psálle- re nómi- ni tú- o, Altíssime. Gló- ri- a Pátri.
E u o u a e.

St. John Chrysostom - January 27

Gradual

Grad.

5.

G

C-ce * sacerdos má- gnus, qui in di-é-

bus sú- is plá- cu- it Dé- o.

∇. Non est invéntus sími- lis íl-li,

qui conservá-

ret * légem Excél- si.

St. John Chrysostom - January 27

Alleluia

1.
A Lle- lú-ia. * *ij.*

∇. Be- á- tus vir, qui súf- fert

ten- ta- ti- ó- nem : quó- ni- am cum probá- tus fú-

e- rit, accí- pi- et co- ró- nam * ví- tæ.

The image shows a musical score for the Alleluia. It consists of six systems of music. Each system has a vocal line (treble clef) and a piano accompaniment line (bass clef). The lyrics are written below the vocal line. The first system starts with a large initial 'A' and the number '1.' above it. The lyrics are 'Lle- lú-ia. * ij.'. The second system has a fermata over the first measure of the vocal line, followed by the lyrics '∇. Be- á- tus vir, qui súf- fert'. The third system has the lyrics 'ten- ta- ti- ó- nem : quó- ni- am cum probá- tus fú-'. The fourth system has the lyrics 'e- rit, accí- pi- et co- ró- nam * ví- tæ.'. The fifth system continues the accompaniment. The sixth system ends with a double bar line.

Offertory

Offert. 4.

J U- stus * ut pálma flo- ré-
bit : sic-ut cé- drus, quæ in Lí- ba-
no est, mul-ti-pli-cá- bi-tur.

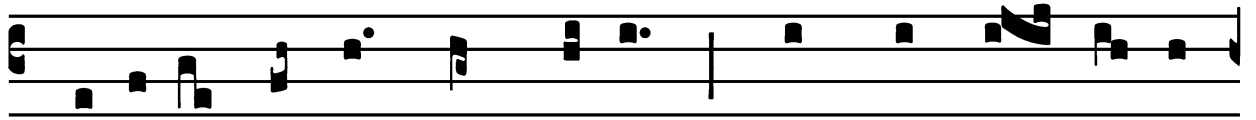
St. John Chrysostom - January 27

Communion

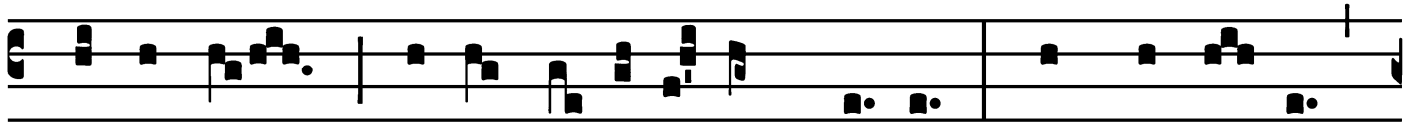
Comm.

7.

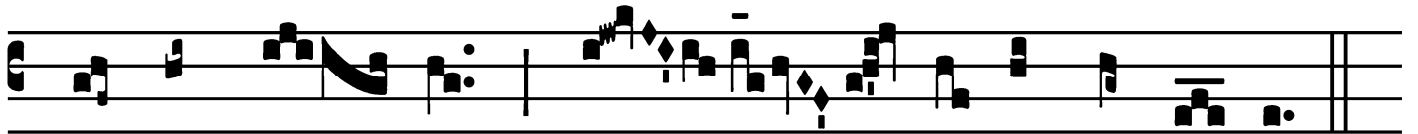
F



Idé-lis sérvus * et prúdens, quem constí- tu- it



Dómi-nus super famí-li- am sú- am : ut det íl- lis



in témpo- re trí- ti- ci mensú- ram.

