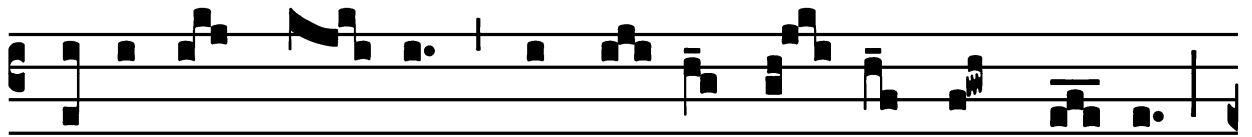


## Introit

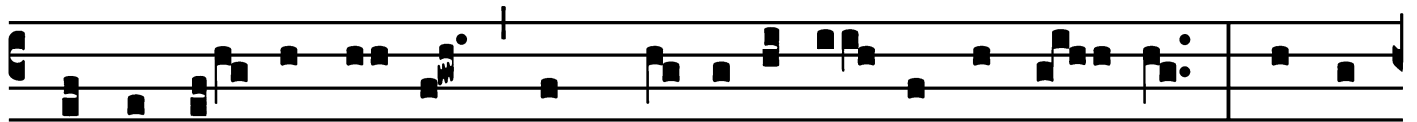
Intr.

7.

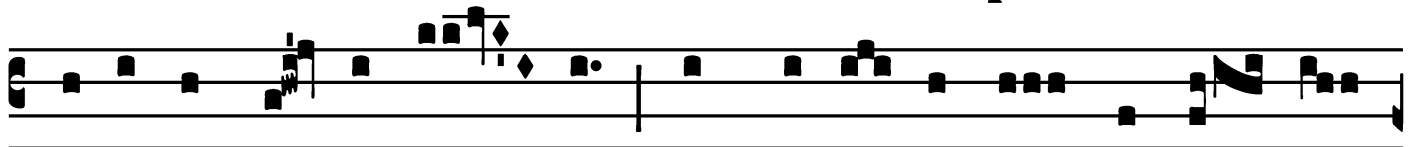
O



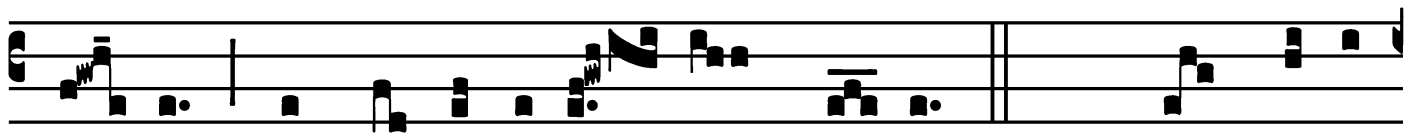
-cu-lus Dé- i \* respé- xit íl- lum in bó- no,



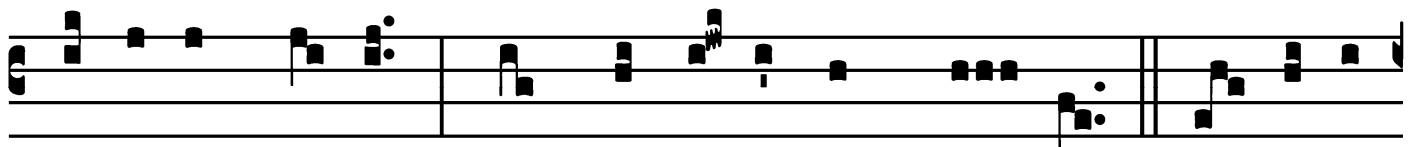
et e-ré- xit é- um ab humi-li-tá- te ipsí- us, et ex-



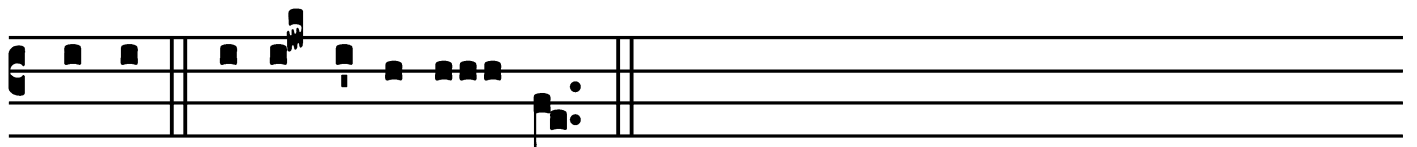
altá-vit cá- put é- jus; et mi-rá- ti sunt in íl- lo



múl- ti et ho-no-ravé- runt Dé- um. *Ps.* Quam bónus



Isra- òl Dé- us \* his qui récto sunt cór- de. Gló- ri- a



Pátri. E u o u a e.

## Gradual

Grad.

5.

**Q**

Uam magna \* multi-tú- do dulcé- di-nis

tú- æ, Dómi- ne, quam abscondí- sti timén-

tibus te.

∇. Perfe- císti

é- is

qui

spé-rant in te, in conspé-

ctu

fi- li- ó- rum \* hómi-num.

# Tract

(Page 1 of 2)

Tract.

8.

**B**

E-á- tus vir, \* cú- jus est au- xí- li- um

abs te : ascensi- ó- nes in córde sú-o

dis- pósu- it, in välle lacrymá- rum, in ló-co quem

pósu- it.  $\forall$ . Elé- gi abjéctus és-

se in dómo Dé- i mé- i, magis

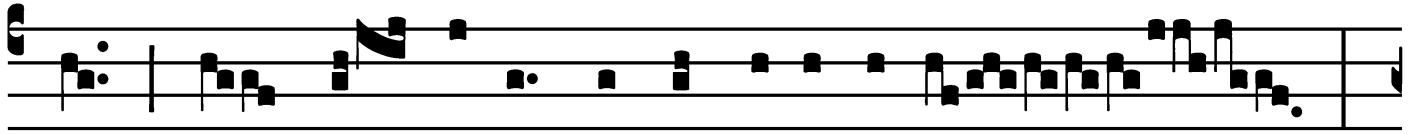
quam habi- tá- re in taberná- cu- lis pecca- tó-

rum.  $\forall$ . Non privá- bit bó- nis é-

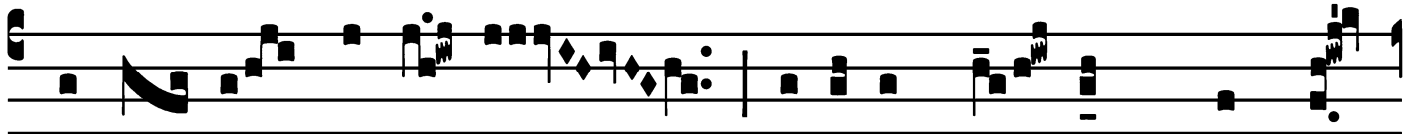
St. Gabriel of Our Lady of Sorrows, Confessor – Feb. 27 or 28

## Tract

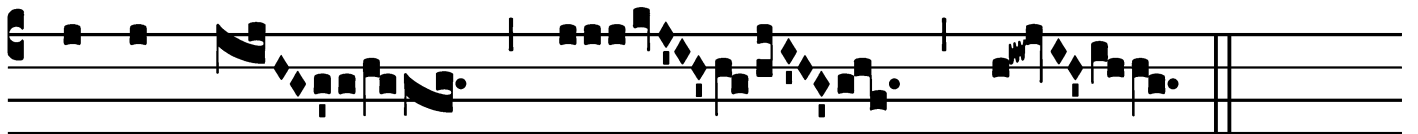
(Page 2 of 2)



os qui ám-bu-lant in innocé-nti-a :



Dó-mi-ne virtú-tum, be-átus hó-mo \* qui spé-



rat in te.

## Offertory

Offert. 8.

**O** Dó- mine, \* qui- a é- go sér- vus  
tú- us et fí- li- us an- cíl- læ tú- æ :  
di- ru- pí- sti vín- cu- la mé- a, tí-  
bi sacri- fi- cá- bo hósti- am láu- dis.

## Communion

Comm.

1.

**E**

Cce sto \* ad ósti- um et púl- so; si quis audí- e-

rit vócem mé- am et ape- rú- e- rit mí- hi jánu- am,

intrábo ad íl- lum, et cœ- ná- bo cum íl- lo et ípse

mé- cum.

