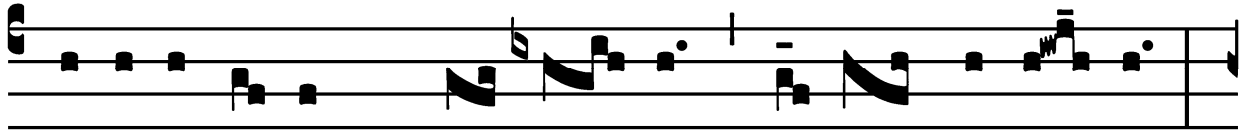


Introit

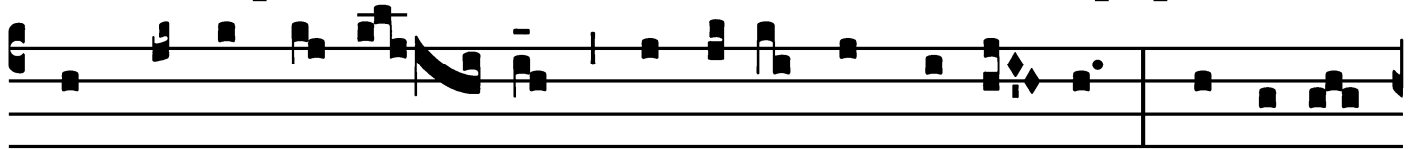
Intr.

1.

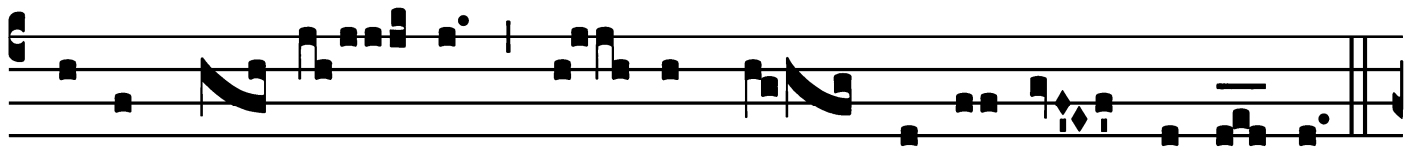
S



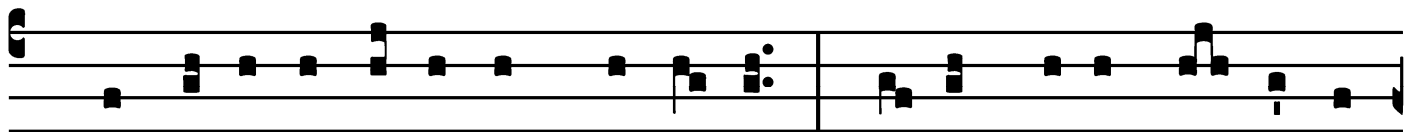
Api-énti- am * sanctó- rum nárrent pópu- li,



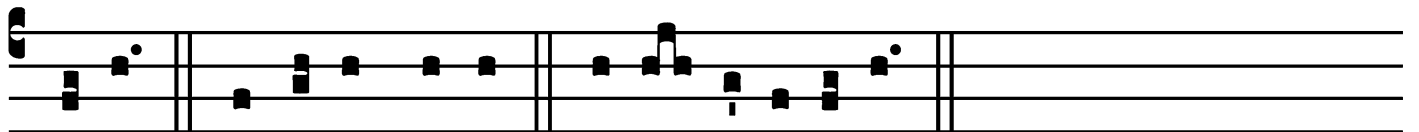
et láudes e- ó- rum núnti-et ecclé-si- a : nómina



autem e- ó- rum ví- vent in sáecu- lum sáecu- li.



Ps. Exsultá-te jústi in Dómi-no : * réctos decet col-laudá-



ti-o. Gló-ri- a Pátri. E u o u a e.

Gradual

(Page 1 of 2)

Grad.

7.

C

Lama- vé-runt jú- sti, * et Dómi- nus

exaudí- vit é- os : et ex ómni- bus

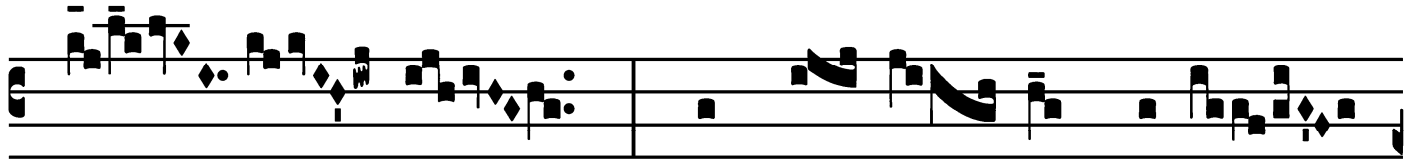
tribu-la-ti- ónibus e- órum

libe-rá- vit é- os. ∇ . Juxta est Dó-

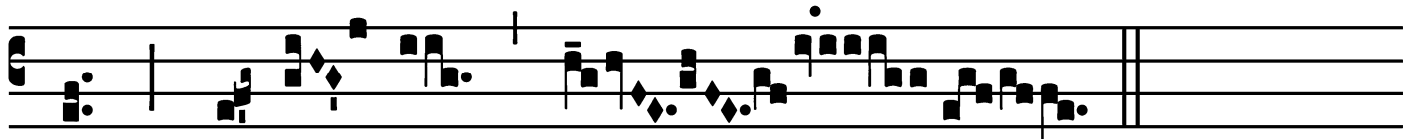
minus his, qui tribu-lá- to sunt cór-

Gradual

(Page 2 of 2)



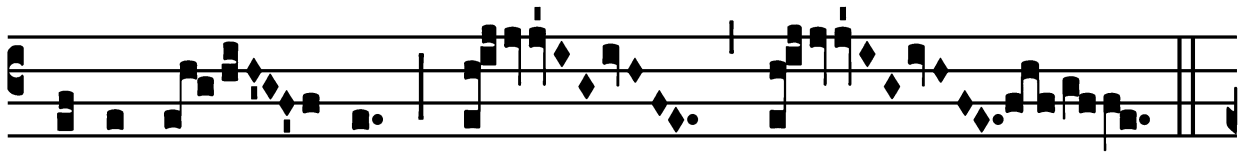
de : et hú- mi- les spí-ri-



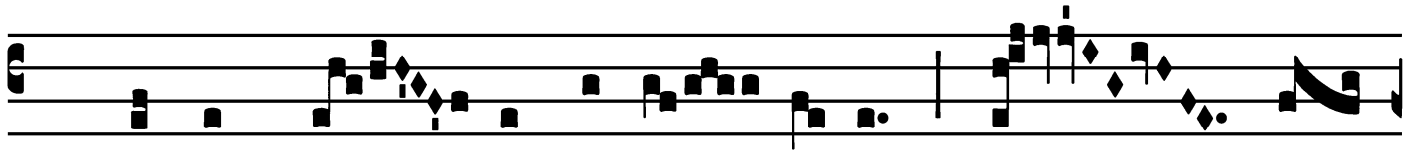
tu * salvá- bit.

Alleluia

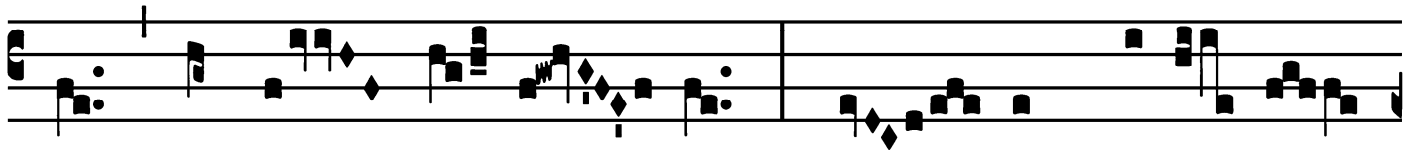
8.
A



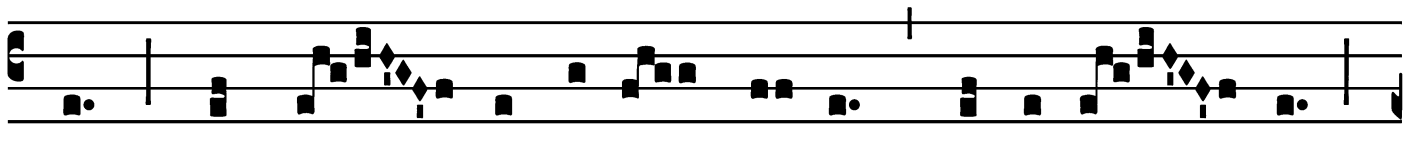
Lle-lú- ia. * *ij.*



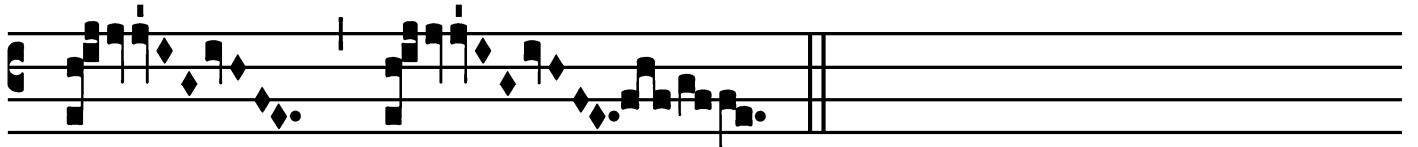
Ÿ. Hæc est vé- ra fra-tér- ni- tas, quæ ví-



cit múndi crí- mi- na : Chrí- stum secú- ta

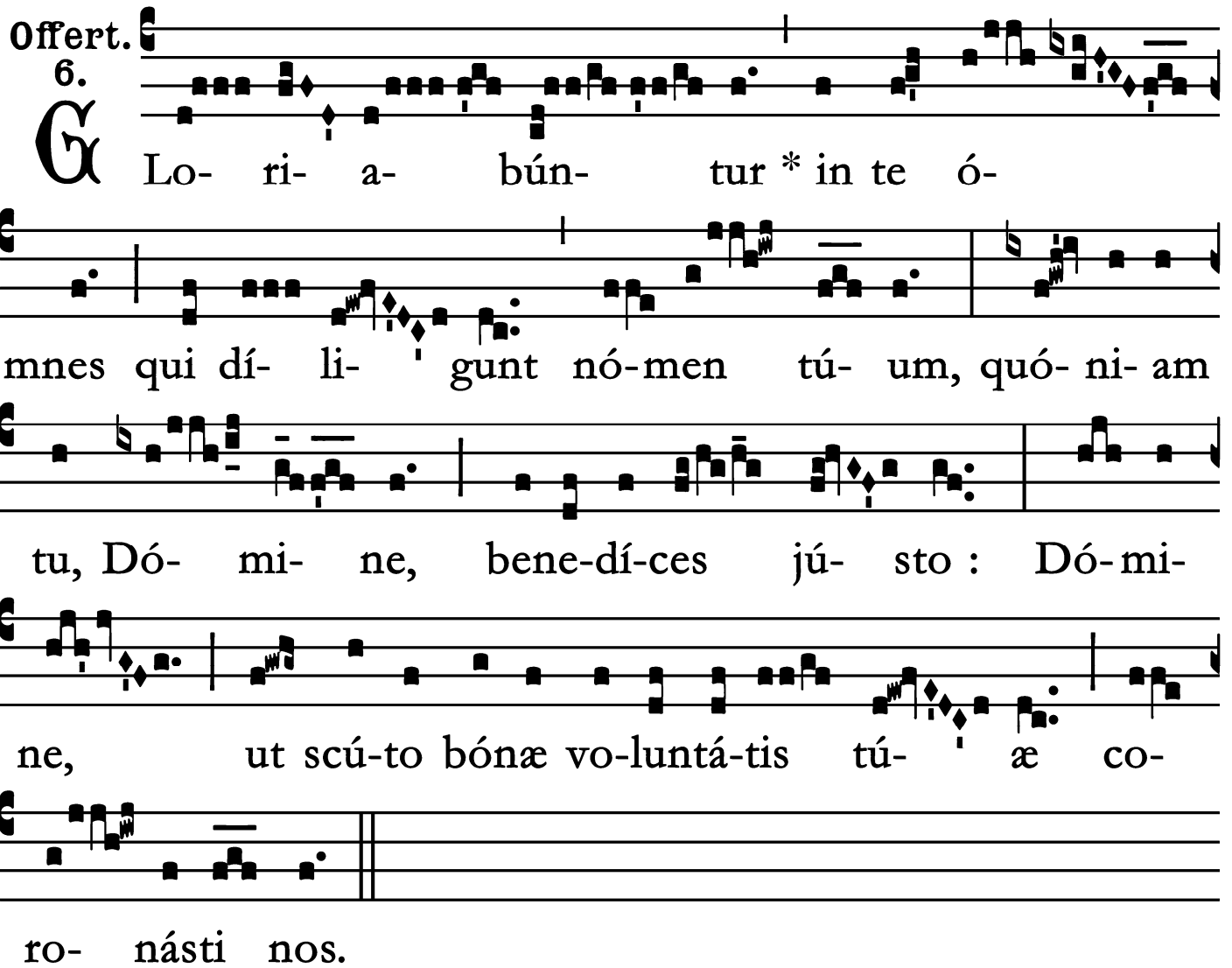


est, ínclý- ta ténens régna * cœ-lésti- a.



Offertory

Offert. 6.



Lo- ri- a- bún- tur * in te ó-
mnes qui dí- li- gunt nó- men tú- um, quó- ni- am
tu, Dó- mi- ne, bene-dí- ces jú- sto : Dó- mi-
ne, ut scú- to bónæ vo- luntá- tis tú- æ co-
ro- násti nos.

Communion

Comm. 1.

P Osu-érunt * mortá-li- a servó- rum tu-ó- rum,

Dómi- ne, escas vo-la- tí- libus cóe- li, cárnes

sanctó- rum tu-ó- rum bésti- is tér- ræ : se-cúndum

magni-tú- di- nem bráchi- i tú- i, pós-side fí-

li- os móрте pu- ni- tó- rum.

