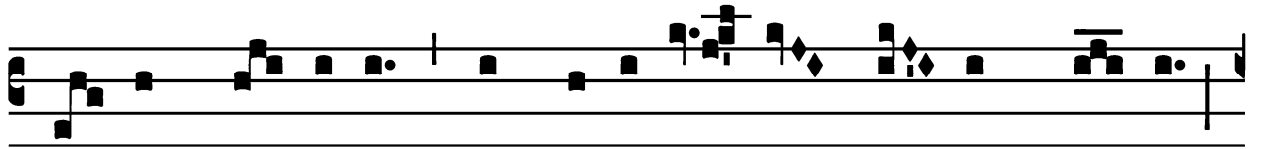


Sainte Clotilde, Reine de France, Veuve [1963] - 3 Juin
Tous les Diocèse de France

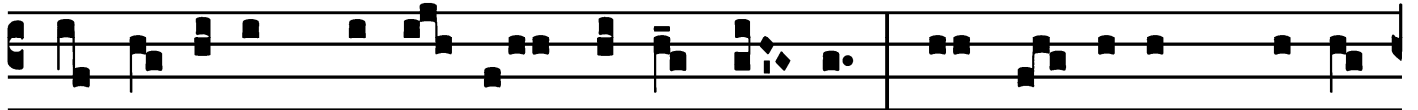
Introit

Intr.
7.

V



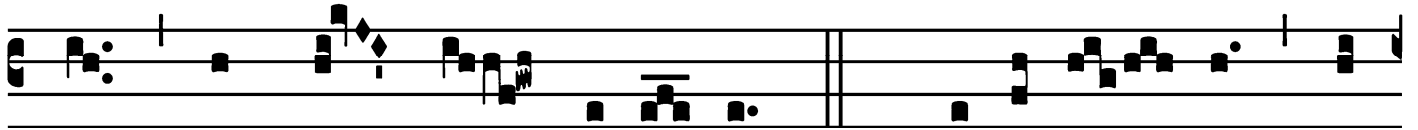
I- vit DÓ-minus, * et benedí- ctus Dé- us mé- us,



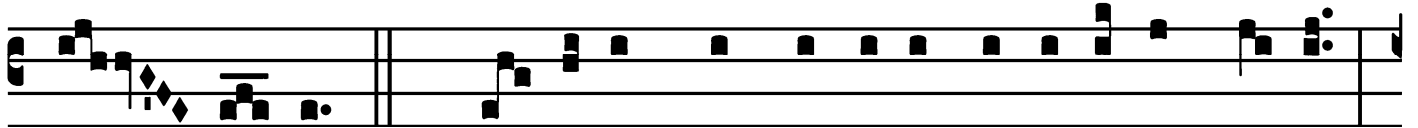
magní- ficans sa-lú- tes Ré-gis é- jus, et fá- ci- ens mi-se-



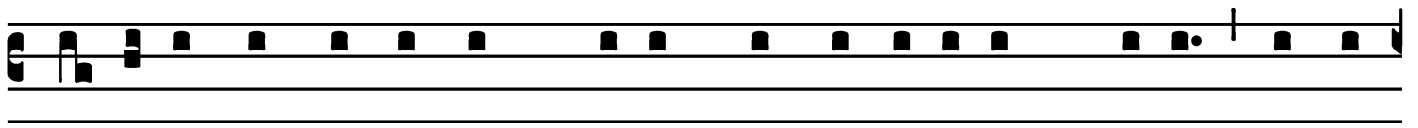
ricór-di- am Chrí- sto sú- o, et sé- mi-ni é-



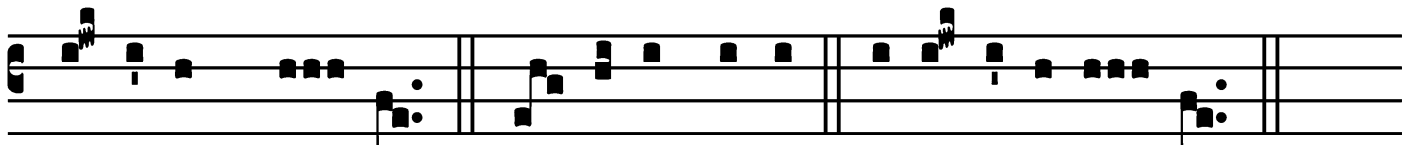
jus usque in sécu- lum. *T. P.* Alle-lú- ia, al-



le- lú- ia. *Ps.* Dí- ligam te Dómine, forti-túdo mé- a : *



Dóminus firmaméntum mé- um, et re-fúgi- um mé- um, et li-



be-rátor mé- us. Gló- ri- a Pátri. E u o u a e.

Gradual

Grad.

2.

R

Egí-na * confú- git ad Dó- mi-

num, et deprecabá- tur, dí- cens :

Trí- bu- e, Dó- mine, sermó- nem compó- si-

tum in conspéctu le- ó- nis,

et tránsfer cor il- lí- us.

∇. Tu scis quod nunquam lætá- ta sit

ancíl- la tú-

a, ni-si in te, * Dé-us Abraham.

Alleluia

8.
A L-le- lú- ia. * *ij.* ∇ . Implé- at

Dó- mi-nus ómnes pe- ti- ti- ónes tú-

as; nunc cognó- vi quóni- am sálvum fé- cit Dó-

mi-nus * Chrí- stum sú-

um.

Sainte Clotilde, Reine de France, Veuve [1963] - 3 Juin

Second Alleluia

(In Paschal Time)

2.
A



L-le- lú- ia. *



∇. Cum invo-cásset ómni- um re-ctó-



rem et salva-tó- rem Dé- um, convér-tit

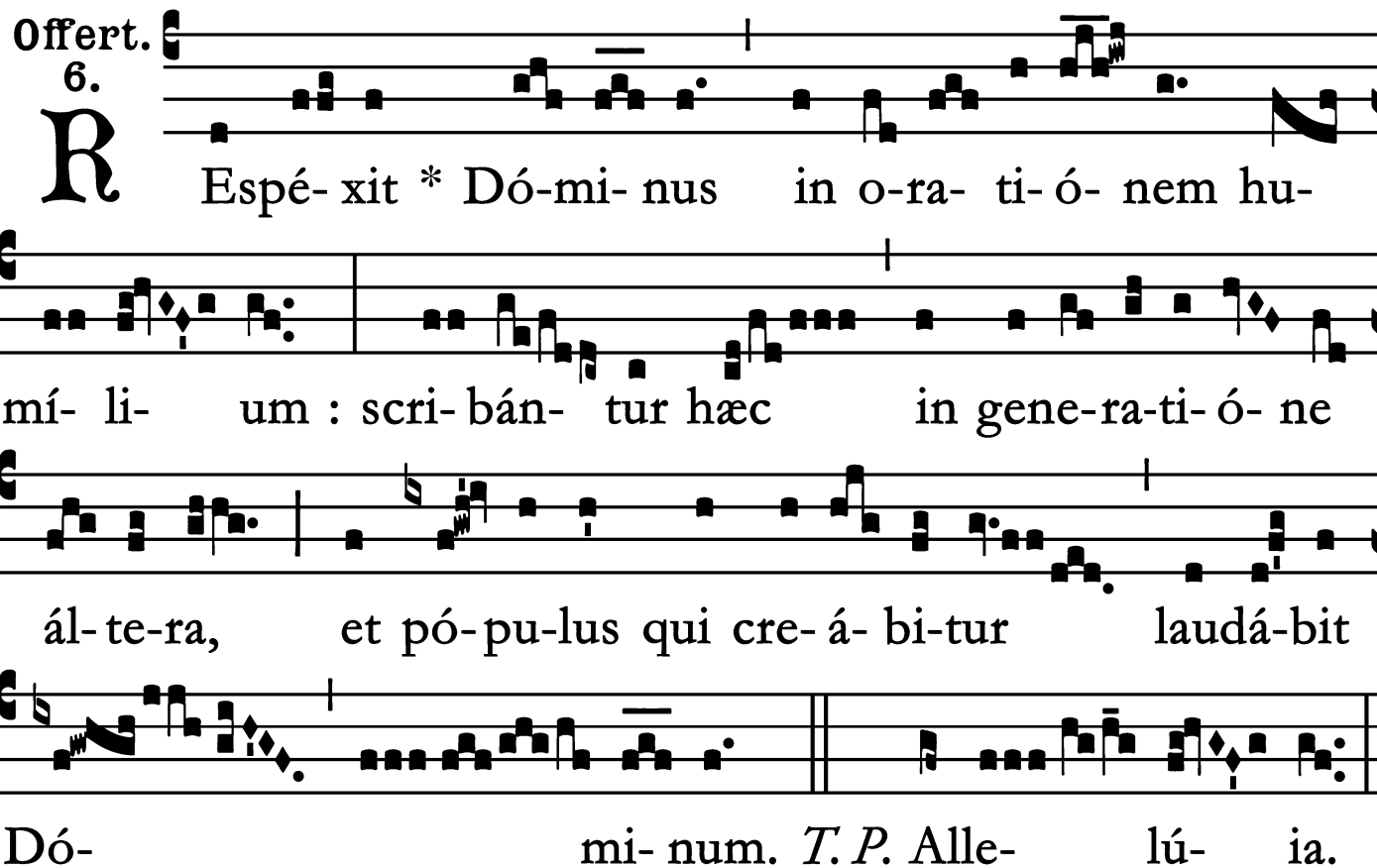


Dé- us * spí- ri-tum Ré-gis.



Offertory

Offert. 6.



R Espé- xit * DÓ-mi- nus in o-ra- ti- ó- nem hu-
mí- li- um : scri- bán- tur hæc in gene-ra-ti- ó- ne
ál-te-ra, et pó-pu-lus qui cre- á- bi-tur laudá-bit
Dó- mi- num. *T. P.* Alle- lú- ia.

Sainte Clotilde, Reine de France, Veuve [1963] - 3 Juin

Communion

Comm. 6.
A - nima mé- a * Dómi- no ví- vet, et sé-
men mé- um sérví- et í- psi. *T.P.* Alle-
lú- ia.

Propre de France,
Desclée & Cie, 1963.
Supplement à Liber Usualis No. 780 (1964).
Cf. Offices et Messes Propres a l'usage du Diocèse de Chartres.

