
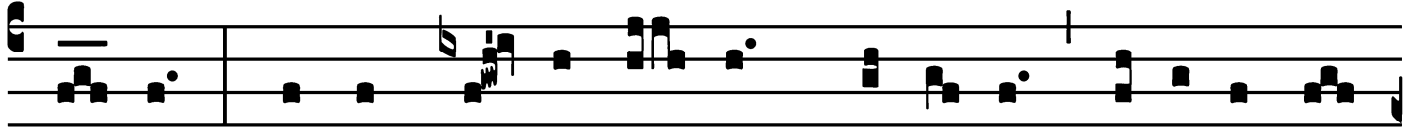


## Introit

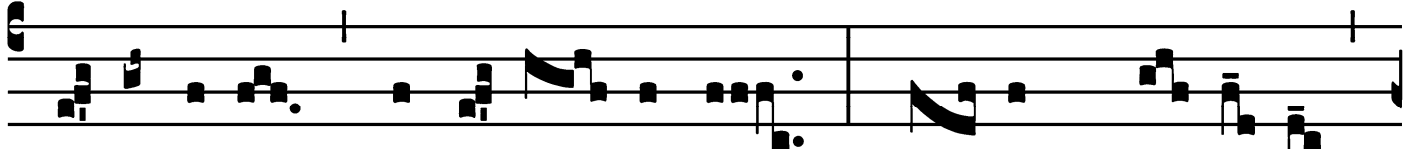
Intr. 6.




N mé- di- o \* Ecclé- si- æ apé- ru- it os




é- jus : et implé- vit é- um Dómi- nus spí- ri- tu sa-



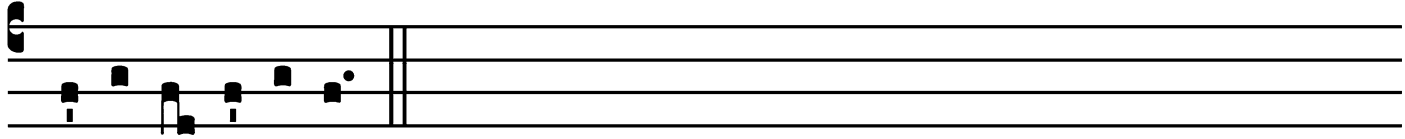
pi- énti- æ, et intel- léctus : stó- lam gló- ri- æ



índu- it é- um. *Ps.* Bónum est confi- té- ri Dómino : \*



et psálle- re nómi- ni tú- o, Altíssime. Gló- ri- a Pátri.



E u o u a e.

# Gradual

Grad. 1.

**O** S jú- sti \* medi- tábi- tur sa-  
pi- én- ti- am, et lín- gua é- jus  
lo- qué- tur judí- ci- um. *∞*. Lex Dé-  
i é- jus in cór-  
de ipsí- us : et non supplan-  
tabún- tur \* grés- sus é- jus.

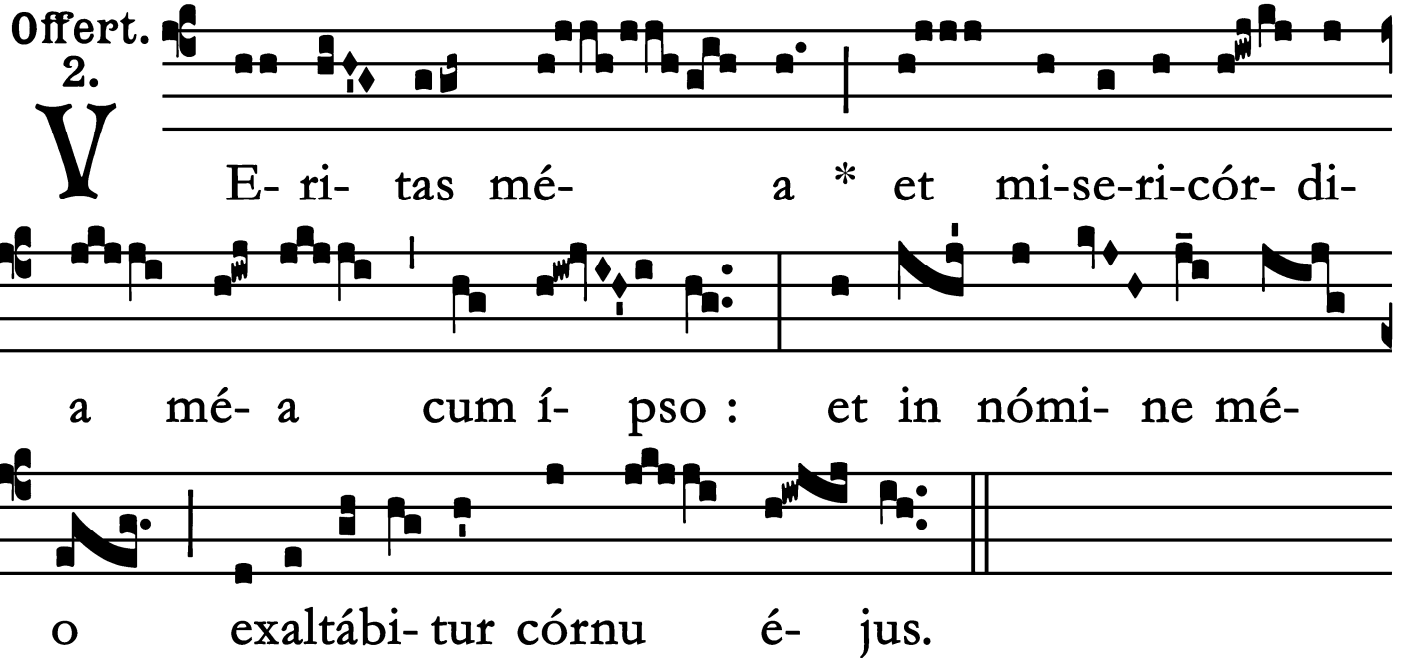
# Alleluia

1.  
**A** Lle- lú- ia. \* *ij.*

∇. Ju-rá- vit Dó- minus, et non pœni-  
té-bit é- um : Tu es sa-cér- dos in æ-tér- num,  
se- cúndum ór- di-nem \* Melchí-  
se- dech.

# Offertory

Offert.  
2.



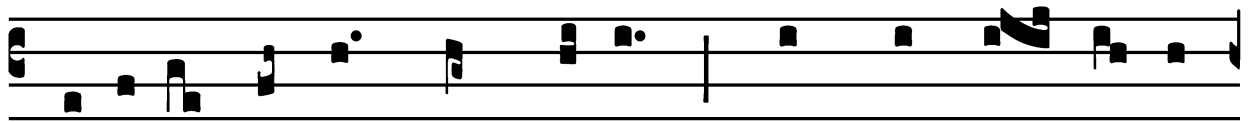
**V** E-ri-tas mé-a \* et mi-se-ri-cór-di-  
a mé-a cum í-pso : et in nómi-ne mé-  
o exaltábi-tur córnu é-jus.

## Communion

Comm.

7.

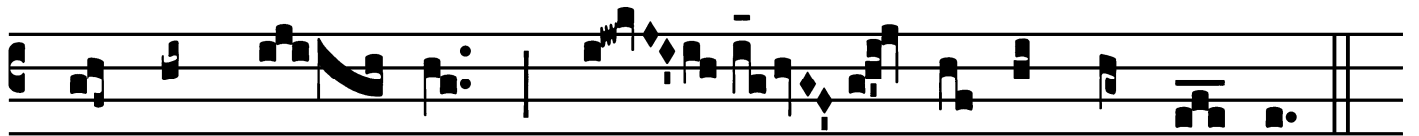
**F**



Idé-lis sérvus \* et prúdens, quem constí- tu- it



Dóminus super famí-li- am sú- am : ut det íl- lis



in témpo- re trí- ti- ci mensú- ram.

