


Ss. Spineæ Coronæ D. N. Jesu Christi - Feria VI. post Cineres
Proprium Sanctorum pro aliquibus locis

Introit

Intr.
2.
E



-gre- dí- mi-ni, * et vidé- te, fí- li- æ Sí-
on, ré- gem Sa-lomó- nem in di- a- dé- ma- te,
quo co-roná- vit é- um má-ter sú- a, pá-rans crú-
cem Sal-va-tó- ri sú- o. *Ps.* Gló-ri- a et honó-
re coronásti é-um, Dómine : * et consti-tu-ísti é-um
super ópe-ra mánu-um tu- á-rum. Gló-ri- a Pátri.
E u o u a e.

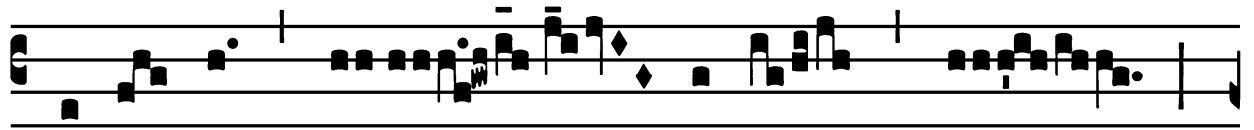
Gradual

(Page 1 of 2)

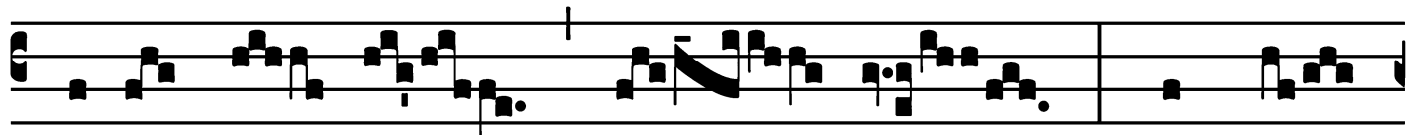
Grad.

3.

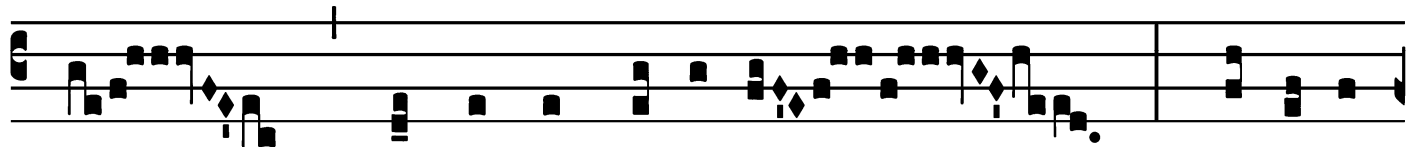
C



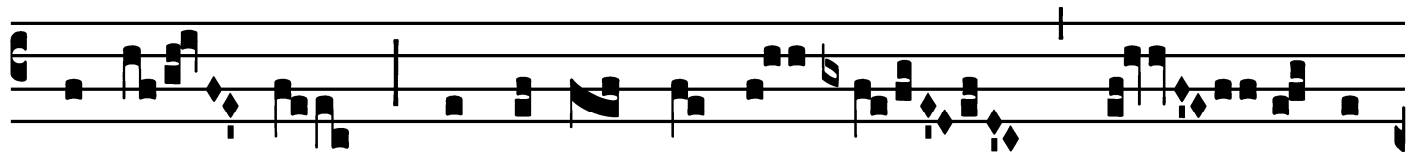
Oró- na * áu- re- a



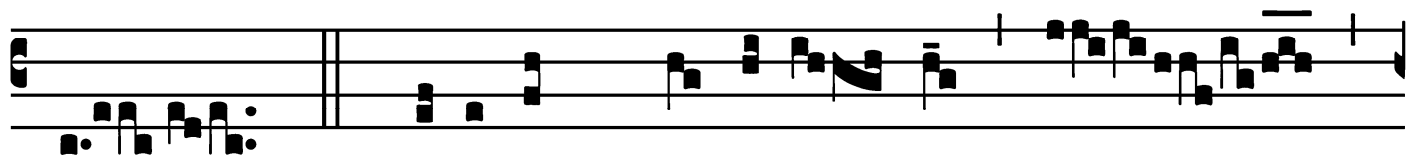
super cá- put é- jus : exprés-



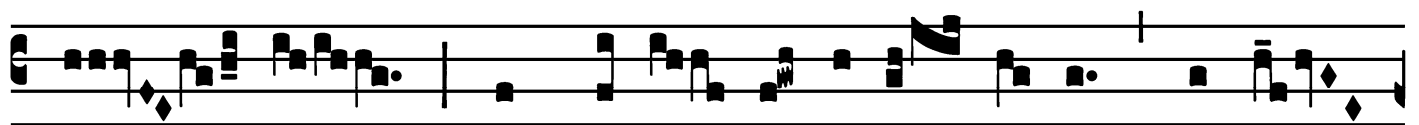
sa sígno sancti- tá- tis, gló-ri- a



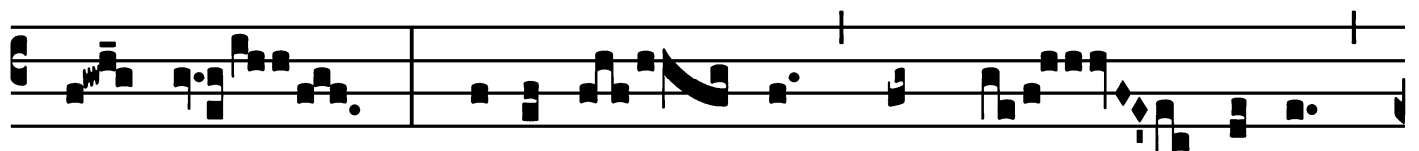
honó- ris, et ópus for- ti- tú- di-



nis. \forall . Quóni- am præ- vení- sti é-



um in bene- di- cti- ó- ni- bus dulcé-



di- nis : posu- í- sti in cá- pi- te

Ss. Spineæ Coronæ D. N. Jesu Christi - Feria VI. post Cineres

Gradual

(Page 2 of 2)

é-jus coró- nam de lápi-de * pre- ti-

ó- so.

Tract

(Page 1 of 2)

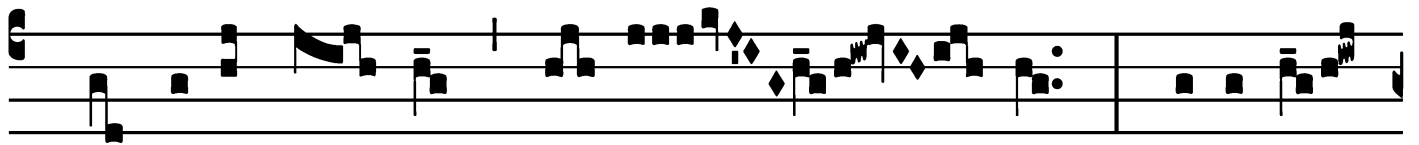
Tract. 8.

Ndu- it é- um * DÓ- minus vestimén-
tis sa- lú- tis, et indu- mén- to ju- stí-
ti- æ, qua- si spónsum deco- rá-
tum coró- na. ¶. Coró- na
tribu- la- ti- ó- nis efflóru- it in coró-
nam gló- ri- æ, et
sér- tum exsulta- ti- ó- nis.

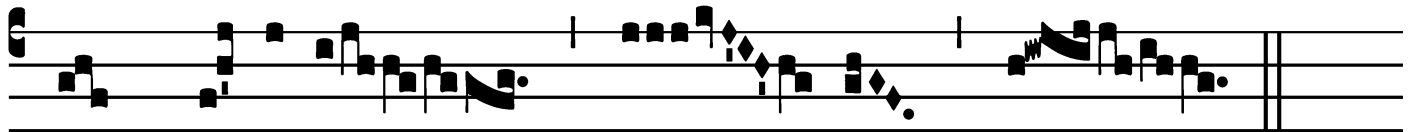
Ss. Spineæ Coronæ D. N. Jesu Christi - Feria VI. post Cineres

Tract

(Page 2 of 2)



Ÿ. Accépit ré- gnum de- có- ris, di- adé-



ma * spe- ci- é- i.

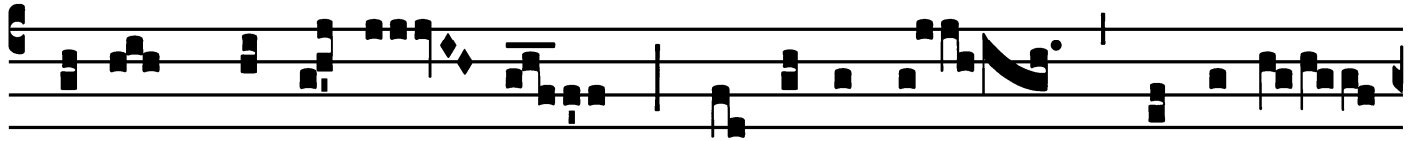
Offertory

Offert.
4.

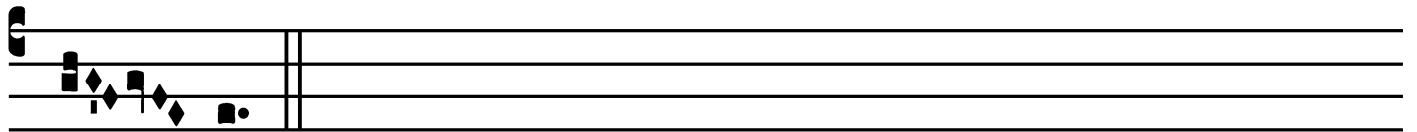


T

U- am coró- nam * ado- rámus Dómi- ne :



tú- am glo- ri- ó- sam re- có- limus passi- ó-



nem.

Communion

Comm.

2.

L

Æ-tá-re, * má-ter nóstra, qui- a dábit Dómi-

nus cápi-ti tú- o augmén-ta gra-ti-á- rum, et co-

ró-na ínclý- ta pró-te- get te.

