

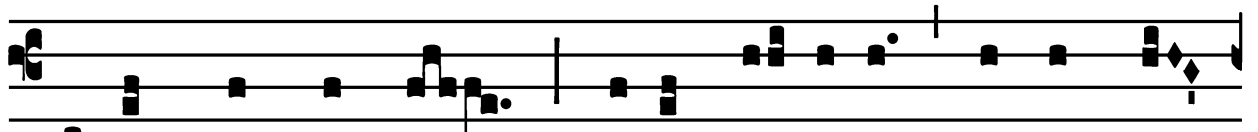
S. Mariæ, Matris Jesu, sub titulo Consolatricis Afflictorum - Missa Votiva

Introit

Intr.

2.

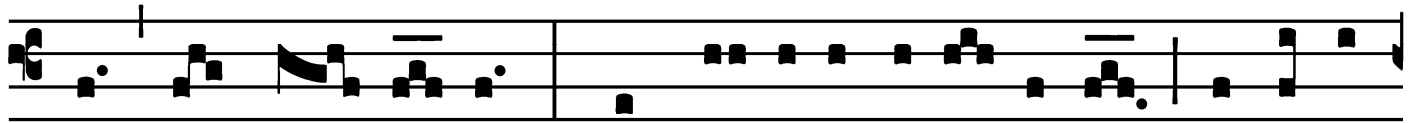
A



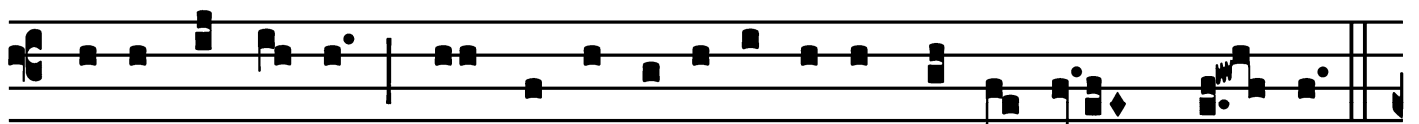
-ve, spes nóstra, * Dé- i Gé- nitrix, Vírgo Ma-



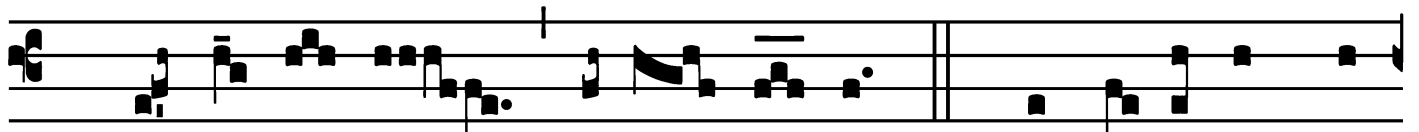
rí- a, quæ meru-ísti portá- re Ré- gem cœ- ló-



rum et Dó- mi- num : tu gló- ri- a Jerú- sa- lem, tu læ- tí-



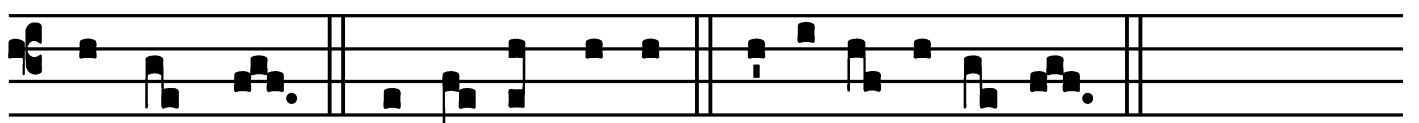
ti- a Isra- òl, tu hono- ri- ficé- nti- a pópu- li nó- stri.



T. P. Al- le- lú- ia, alle- lú- ia. *Ps.* Confortá- vit Dó-



minus sé- ras portá- rum tu- árum : * be- nedí- xit fí- li- is tú-



is in te. Gló- ri- a Pátri. E u o u a e.

S. Mariæ, Matris Jesu, sub titulo Consolatricis Afflictorum - Missa Votiva

Gradual

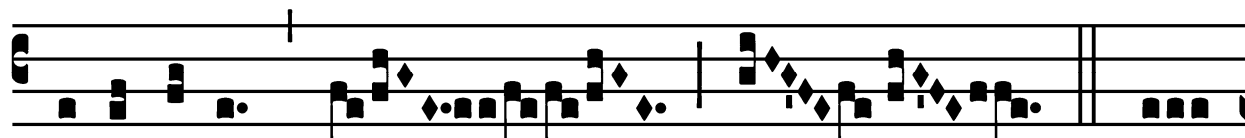
Grad. 1.

N Igra sum, * sed formó-sa, fí-
li-æ Je- rú- sa-lem, sicut tabernácu-la Cé-
dar, sicut pél-les Sa-lomó-nis. *V.* Intro-
dúxit me rex in cé-
lam vi-ná-ri-am, ordiná-vit in me *
ca-ri-tá-tem.

S. Mariæ, Matris Jesu, sub titulo Consolatricis Afflictorum – Missa Votiva

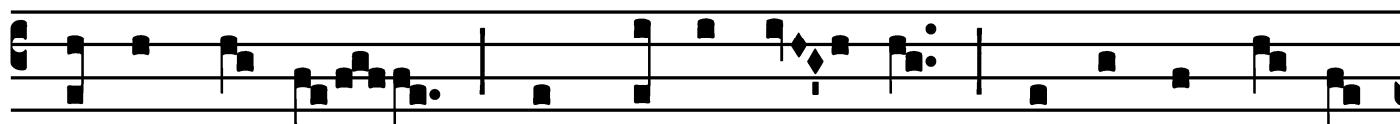
Alleluia

8.
A



Lle-lú-ia. * *ij.*

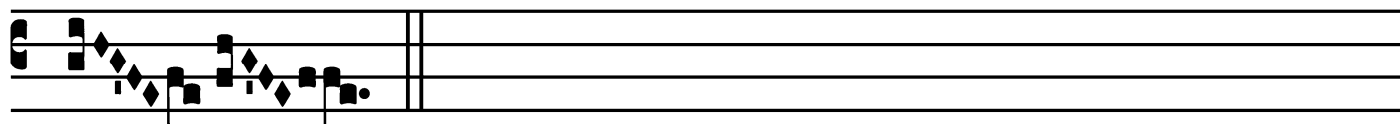
∇. In



fló-re má-ter, in pártu vír-go, gáude et læ-tá-



re, Vírgo Má-ter * Dó-mi-ni.



S. Mariæ, Matris Jesu, sub titulo Consolatricis Afflictorum – Missa Votiva

Tract

(Post Septuagesimam)

Tract.

2.

D

I-léctus mé-us

* cándi- dus et ru- bi-cún-

dus,

e-lé- ctus

ex míl- li-bus.

∞. Fascícu- lus mýrrhæ di-léctus mé- us mí- hi :

inter úbe-ra mé-

a

commo-rá-

bi-tur.

∞. O

vos ó-

mnes, qui transí- tis per

ví-

am, atté-ndi-te,

et vidé-

te,

si est dó- lor

sic-

ut dó- lor * mé-

us.

S. Mariæ, Matris Jesu, sub titulo Consolatricis Afflictorum - Missa Votiva

Alleluia
(Tempore Paschali)

1.
A Lle- lú- ia. * *ij.*

Ÿ. Dómine in vo-luntá- te tú- a, præsti- tí-
sti de-có- ri mé- o * vir- tú- tem.

Alleluia
(Tempore Paschali)

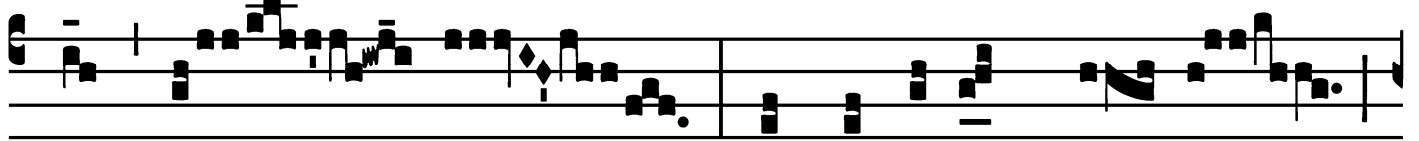
8.
A Lle-lú-ia. * √. Conver-tí-
sti plán-ctum mé-um in gáudi-um : con-
sci-dí-sti sáccum mé-um, et circumde-dí-sti
me * læ-tí-ti-a.

Offertory

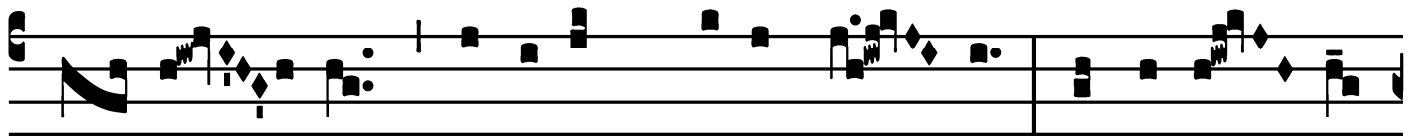


I

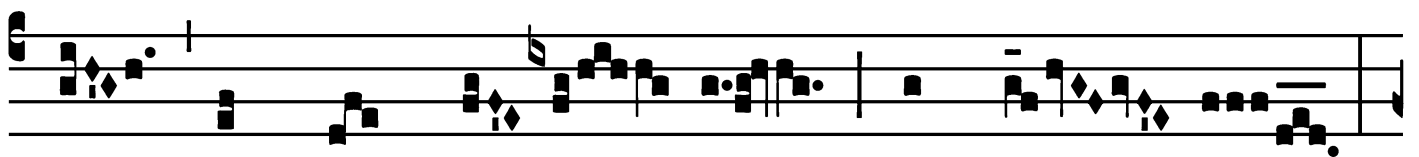
N il- la hó- ra * fáctus est ter- ræmó-



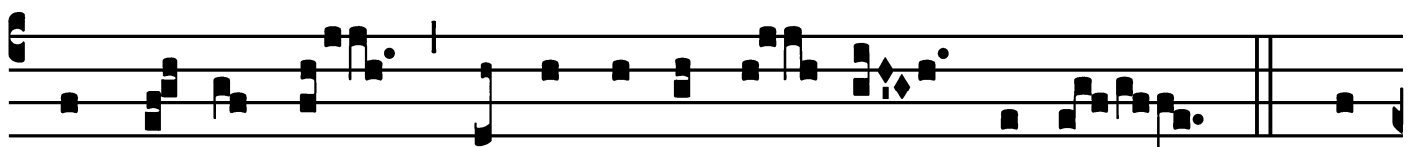
tus má- gnus. In timórem mís- si



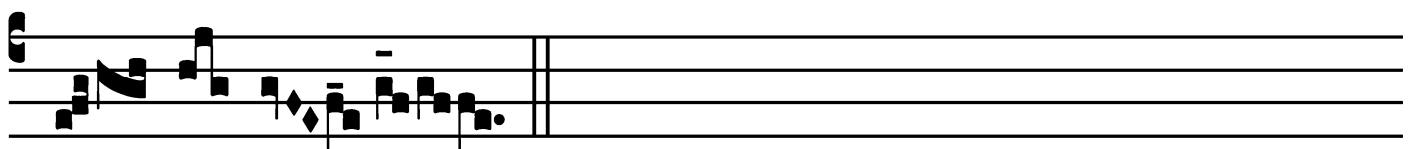
de- dé- runt gló-ri- am Dé- o có- li, et apér- tum



est témplum Dé- i in có- lo,



et ví- sa est árcá testamén- ti é- jus. *T. P. Al-*



le- lú- ia.

Communion

Comm. 1.

B E-á-tus hómo * qui áudit me, et qui ví-
gi-lat ad fó-res mé-as quo-tí-di-e, et obsérvat ad
pó-stes ó-sti-i mé-i. Qui me invéne-rit, in-
vé-ni-et ví-tam, et háu-ri-et sa-lú-tem a
† Dó-mi-no. *T.P.* † Dó-mi-no, alle-lú-ia.

