

Introit

Intr. 1.



G Aude- ámus * ómnes in Dó- mi- no, dí- em fé-
stum ce-le-brántes sub honó- re Ma-rí-æ Vírgi- nis,
di-ví-ni Pastó-ris Má-tris, de cú-jus sol-emni-tá- te gáu-
dent An-ge- li, et colláu- dant Fí- li-um Dé-
i. *T. P.* Alle-lú- ia, alle- lú- ia. *Ps.* Pro-texísti me,
Dé-us, a convéntu ma-lignánti- um, * a multi-túdine operán-
ti-um in- iqui-tá- tem. Gló-ri- a Pátri. E u o u a e.

B. M. V. Divini Pastoris Matris - Sabato ante Dom. II. post Pascha

Alleluia

(In Tempus Paschale)

4.
A L-le- lú-ia. * *ij.*

∩. Omnes nos qua-si ó- ves errá- vimus :

unus- quís- que in ví- am sú-

am * decli- návit.

The image shows a musical score for a four-part setting of the Alleluia. It consists of four staves of music. The first staff begins with a large 'A' and the number '4.'. The lyrics are in Latin and include a rubric '* ij.' after the first line. The text continues across the four staves: 'L-le- lú-ia.', '∩. Omnes nos qua-si ó- ves errá- vimus :', 'unus- quís- que in ví- am sú-', and 'am * decli- návit.' The music is written in a style typical of early 20th-century liturgical publications, with square notes and stems.

Second Alleluia

(In Tempus Paschale)

8.
A Lle- lú- ia. *

Ÿ. Vír- go glo-ri- o-síssi-ma, di-ví- ni

Pastó- ris Má- ter, ré- spi- ce in nos, et

dí- rige nos * in ví- am

ré- ctam.

B. M. V. Divini Pastoris Matris - Sabato ante Dom. II. post Pascha

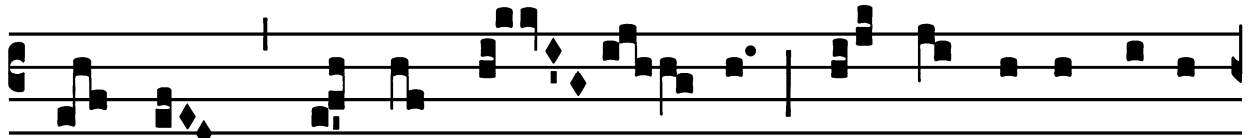
Gradual

(Extra Tempus Paschale)

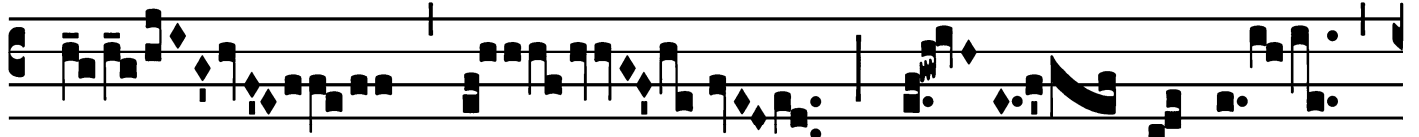
Grad.

7.

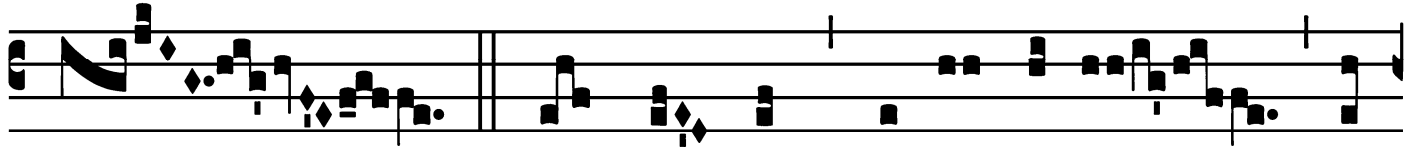
P



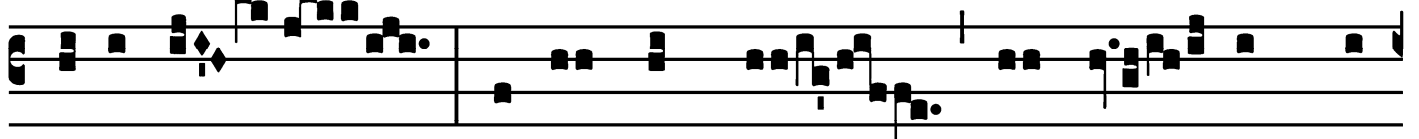
A-sce * hó-dos tú- os jux-ta tabernácu-



la pa- stó-rum.



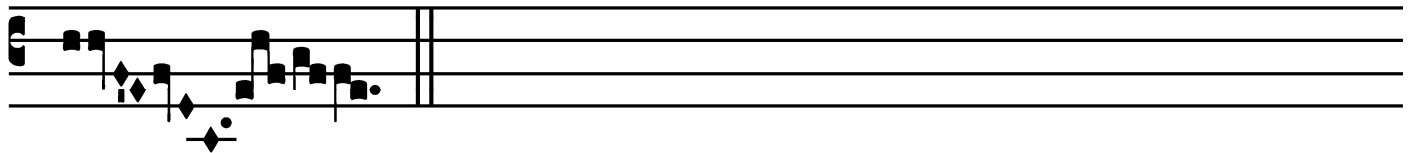
∩. Omnes nos qua-si óves er-



rávimus : unusquísque in ví- am sú-



am * decli-ná- vit.



Allelúia, allelúia. ∩. Vírgo gloriosíssima, ut supra.

Offertory

Offert.

5.

S

I quis est * pár-vu-lus, vé-ni-at ad me, et in-

si-pi-énti-bus locú-ta est : Ve- ní- te, comé- di-

te pá- nem mé- um, et bí- bi-te ví-

num, quod mí- scu- i vó-

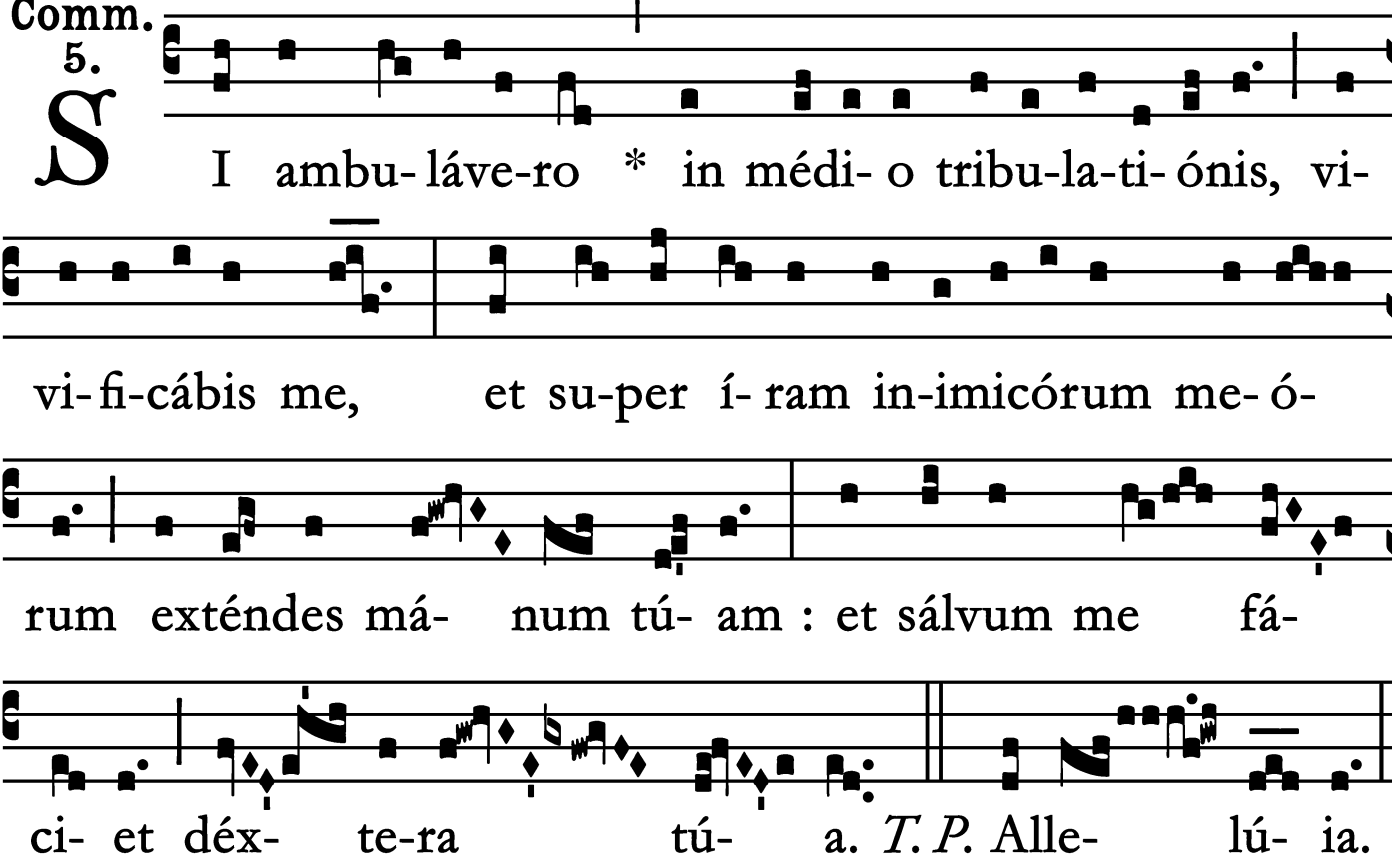
bis.

T. P. Alle-

lú- ia.

Communion

Comm.
5.
S



I ambu-láve-ro * in médi-o tribu-la-ti-ónis, vi-
vi-fi-cábis me, et su-per í-ram in-imicórum me-ó-
rum exténdes má-num tú-am : et sálvum me fá-
ci-et déx-te-ra tú-a. *T. P.* Alle-lú-ia.

Missae Propriae Dioecesium Angliae,
Desclée et Socii, 1909.
Supplement to Graduale Romanum No. 696 (1908).
Cf. Proprium Missae ad usum FF. MM. Capuccinorum (1925).

