

Mass of the Blessed Virgin Mary on Saturday

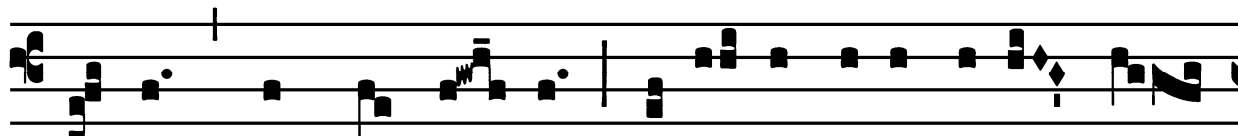
Introit

(Pentecost to Advent)

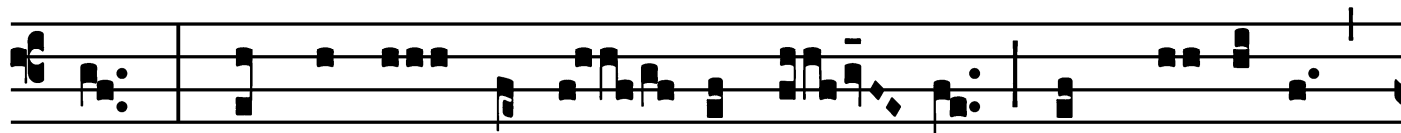
Intr.

2.

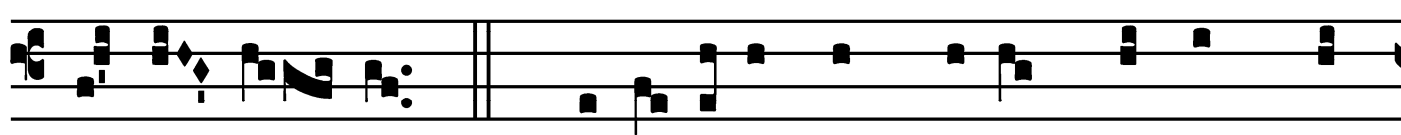
S



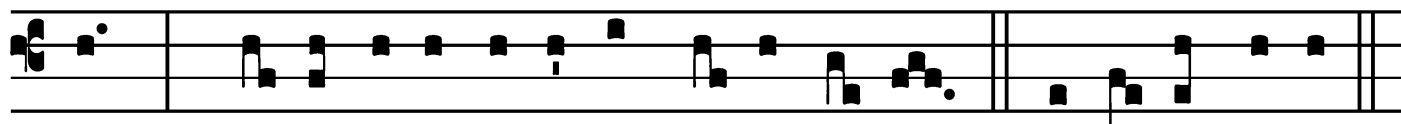
Alve * sáncta Pá-rens, ení-xa pu-érpera Ré-



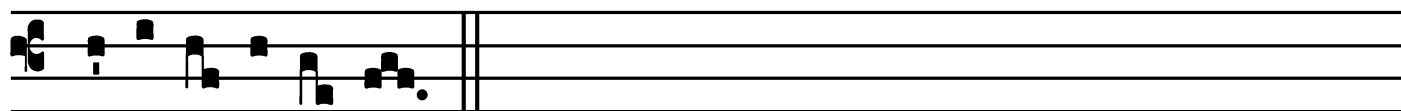
gem, qui cóe-lum terrám-que ré-git in sǎ-cu-la



sǎ-cu- ló- rum. *Ps.* Eructávit cor mé-um vérbum bó-



num : * dí-co égo ópe-ra mé- a ré-gi. Gló-ri- a Pátri.



E u o u a e.

Mass of the Blessed Virgin Mary on Saturday

Gradual

(Pentecost to Advent)

Grad.

4.

B

Enedícta * et ve-ne-rá-bi-lis es, Vírgo Ma-

rí-a : quæ si-ne táctu pudó-ris in-

vén-ta es má-ter Salva-tó-ris.

Ÿ. Vírgo

Dé-i Géni-

trix, quem tó-tus non cápit ór-bis, in

tú-a se cláu-sit ví-sce-ra * fá-ctus hó-mo.

Mass of the Blessed Virgin Mary on Saturday

Alleluia

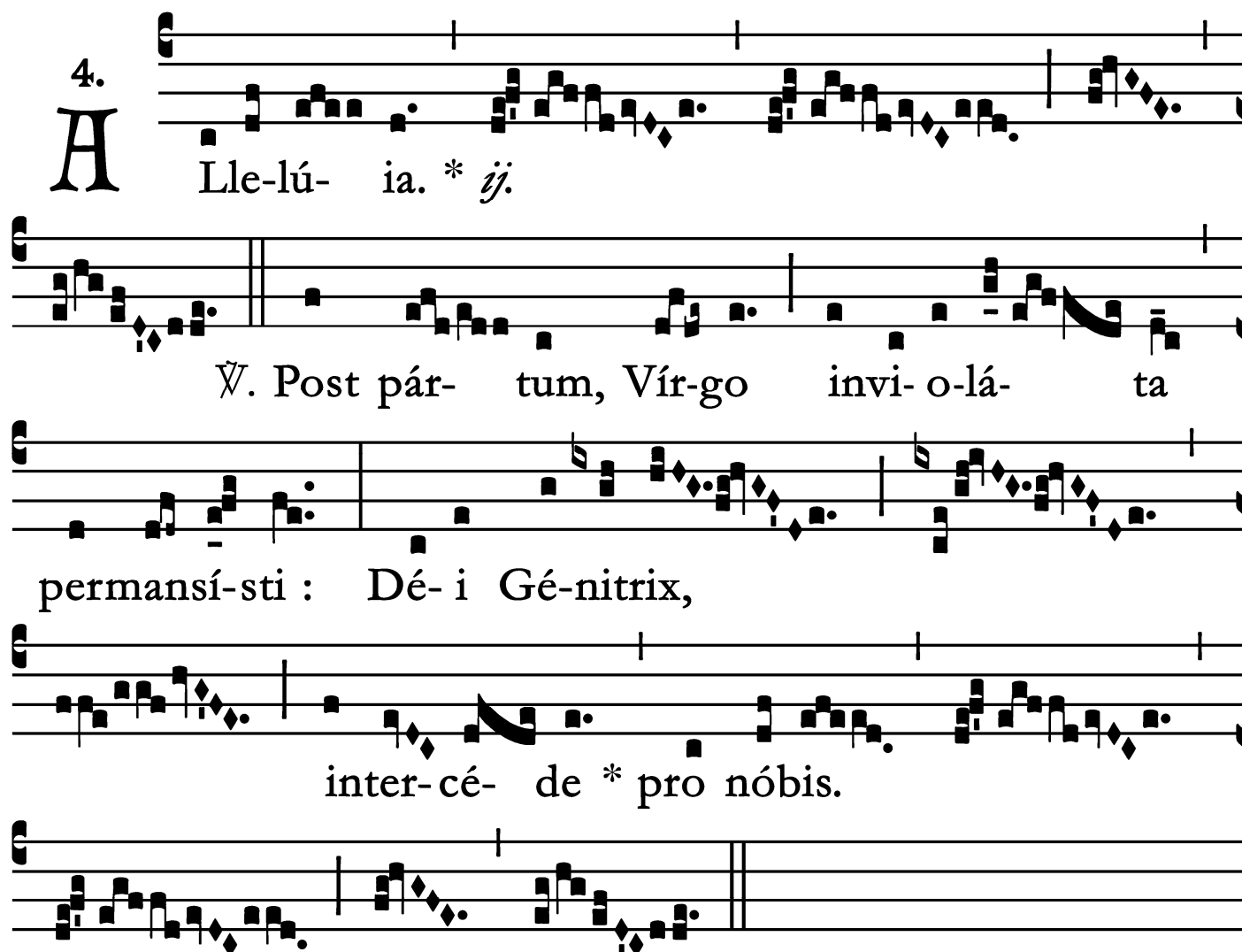
(Pentecost to Advent)

4.
A Lle-lú- ia. * *ij.*

∞. Post pár- tum, Vír-go invi- o-lá- ta

permansí-sti : Dé- i Gé-nitrix,

inter-cé- de * pro nóbis.

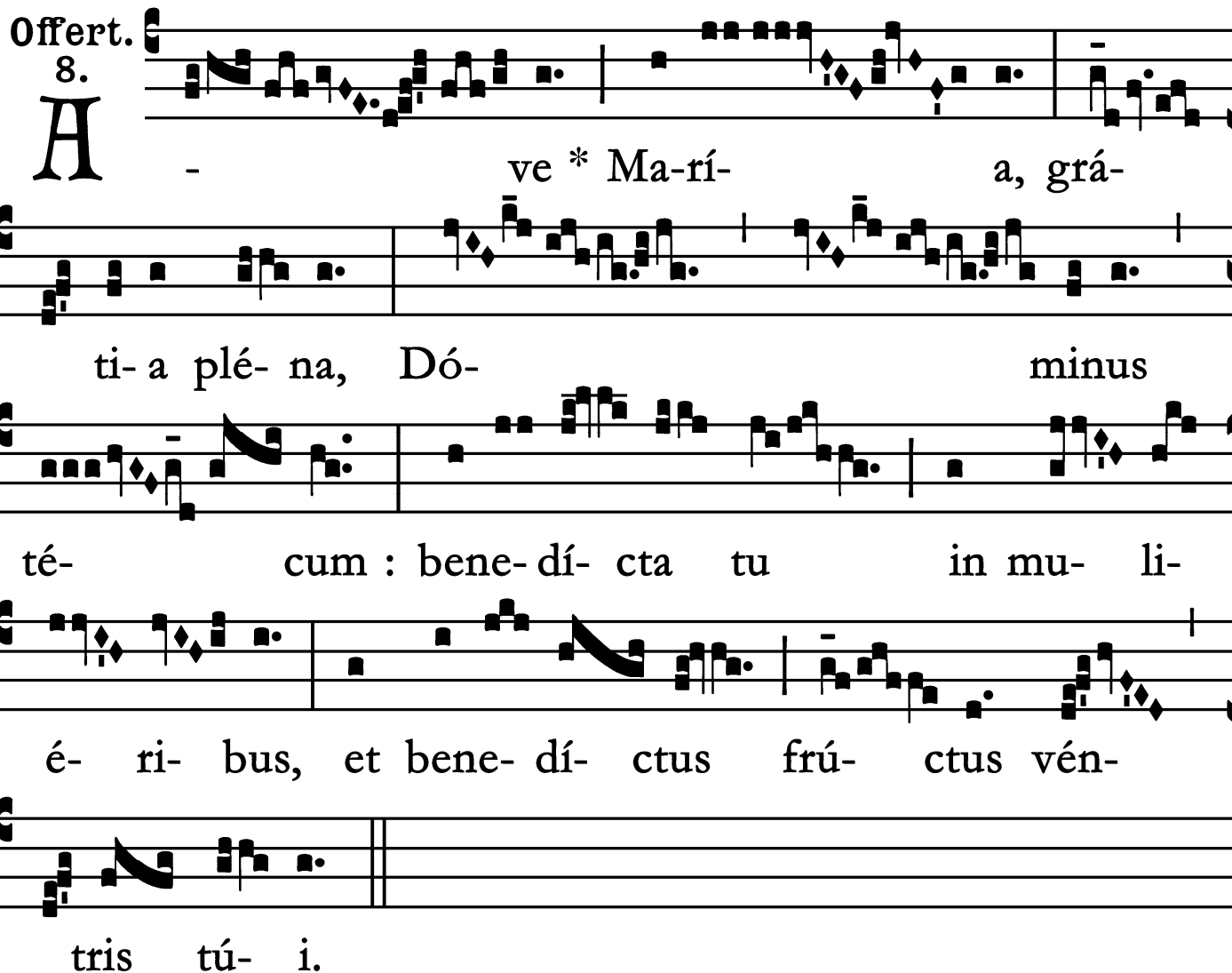
The image shows a musical score for the Alleluia. It consists of six staves. The first staff begins with a treble clef and a common time signature. The lyrics are written below the notes. The second staff continues the melody. The third staff has a repeat sign at the beginning. The fourth staff continues the melody. The fifth staff continues the melody. The sixth staff is an instrumental line with no lyrics.

Mass of the Blessed Virgin Mary on Saturday

Offertory

(Pentecost to Advent)

Offert. 8.



A - ve * Ma-rí- a, grá-
ti- a plé- na, Dó- minus
té- cum : bene- dí- cta tu in mu- li-
é- ri- bus, et bene- dí- ctus frú- ctus vén-
tris tú- i.

Mass of the Blessed Virgin Mary on Saturday

Communion

(Pentecost to Advent)

Comm.

1.

B

E-á-ta vísce- ra * Ma-rí-æ Vír- gi-nis, quæ por-

The image shows musical notation for a Communion chant. It consists of three staves. The first staff contains the vocal line with a treble clef and a common time signature. The second staff contains the accompaniment with a bass clef. The third staff is partially visible at the bottom of the page, showing the beginning of the next line of text and notes.