

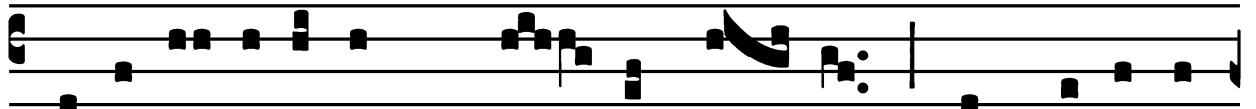
Votive Mass of the Sacred Heart of Jesus

Introit

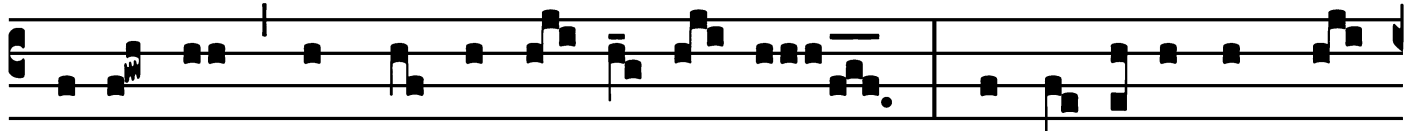
(Outside Paschal Time)

Intr.
5.

C



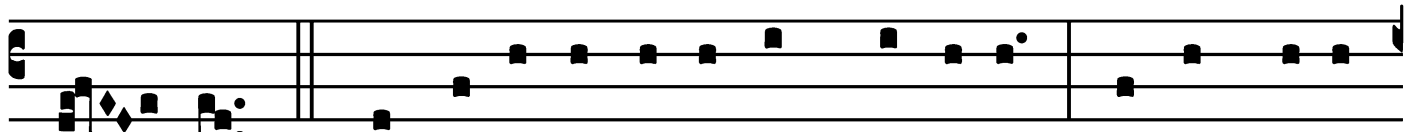
Ogi-ta- ti- ónes * Cór- dis é- jus in gene-ra-



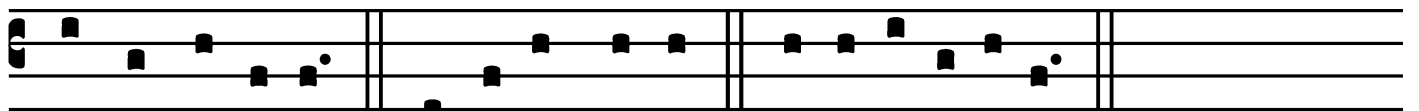
ti- ó-ne et ge-ne-ra- ti- ó-nem : ut é-ru-at a mór-



te á- nimas e- ó- rum et á-lat é-os in



fá- me. *Ps.* Exsultá-te jústi in Dómino, * réctos decet



collaudá-ti-o. Gló-ri-a Pátri. E u o u a e.

Votive Mass of the Sacred Heart of Jesus

Gradual

(Outside Paschal Time)

Grad. 1.

D Ul- cis * et ré- ctus Dó- mi-
nus, pro- pter hoc légem dábit de- lin- quénti- bus in
ví- a. ∇ . Dí- riget mansu- é- tos
in judí- ci- o, do- cé-
bit mí- tes ví- as * sú- as.

Votive Mass of the Sacred Heart of Jesus

Alleluia

(Outside Paschal Time)

3.
A Lle- lú-ia. * *ij.*

Ÿ. Tól- li-te jú- gum mé- um super

vos et dísci-te a me, qui- a mí-tis sum

et hú- mi- lis Cór-de, et inve-

ni- é- tis ré- qui- em

* a- nimá- bus véstris.

Votive Mass of the Sacred Heart of Jesus

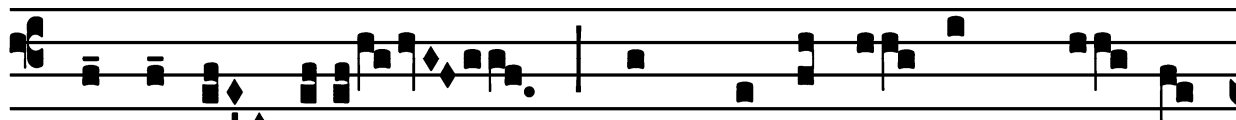
Tract

(After Septuagesima)

Tract.

2.

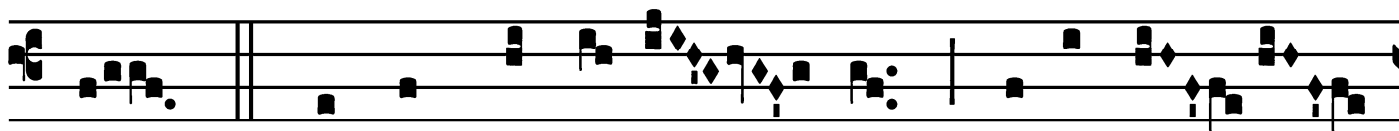
M



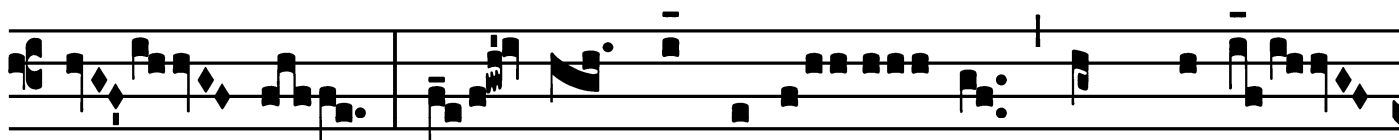
I-sé-ri- cors * et mi-se-rá- tor DÓ-mi-



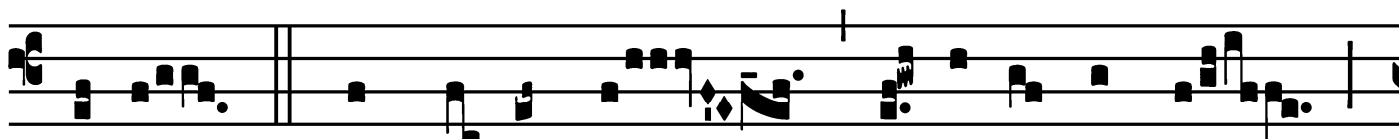
nus, longánimis et mul- tum mi-sé- ri-



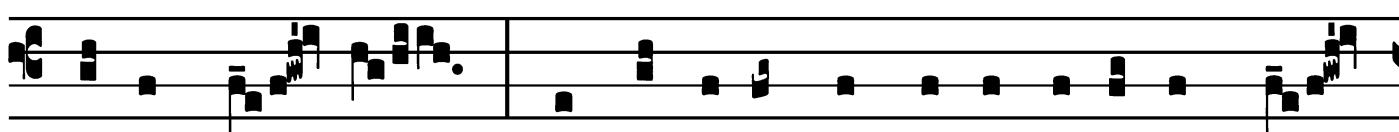
cors. *V̇*. Non in perpé-tu- um i-rascé-



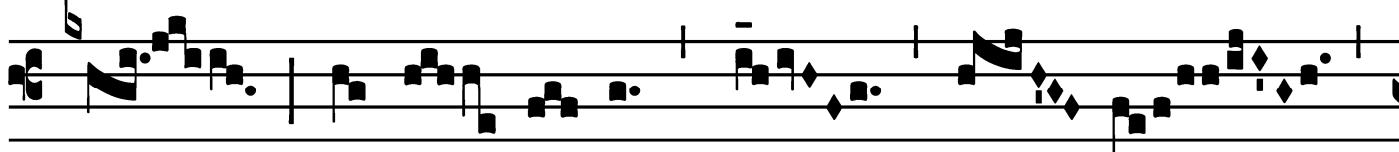
tur, ne- que in ætér- num comminá-



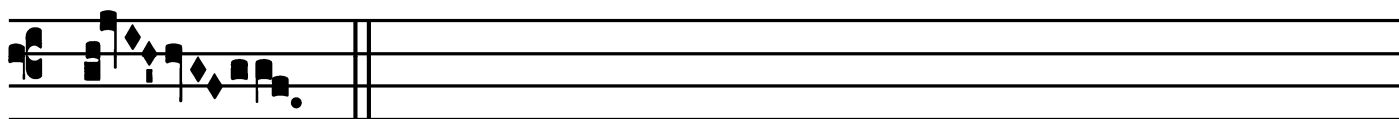
bi-tur. *V̇*. Non se-cúndum peccá-ta nóstra



fé-cit nó- bis, neque secúndum in-iqui-tá-tes nó-



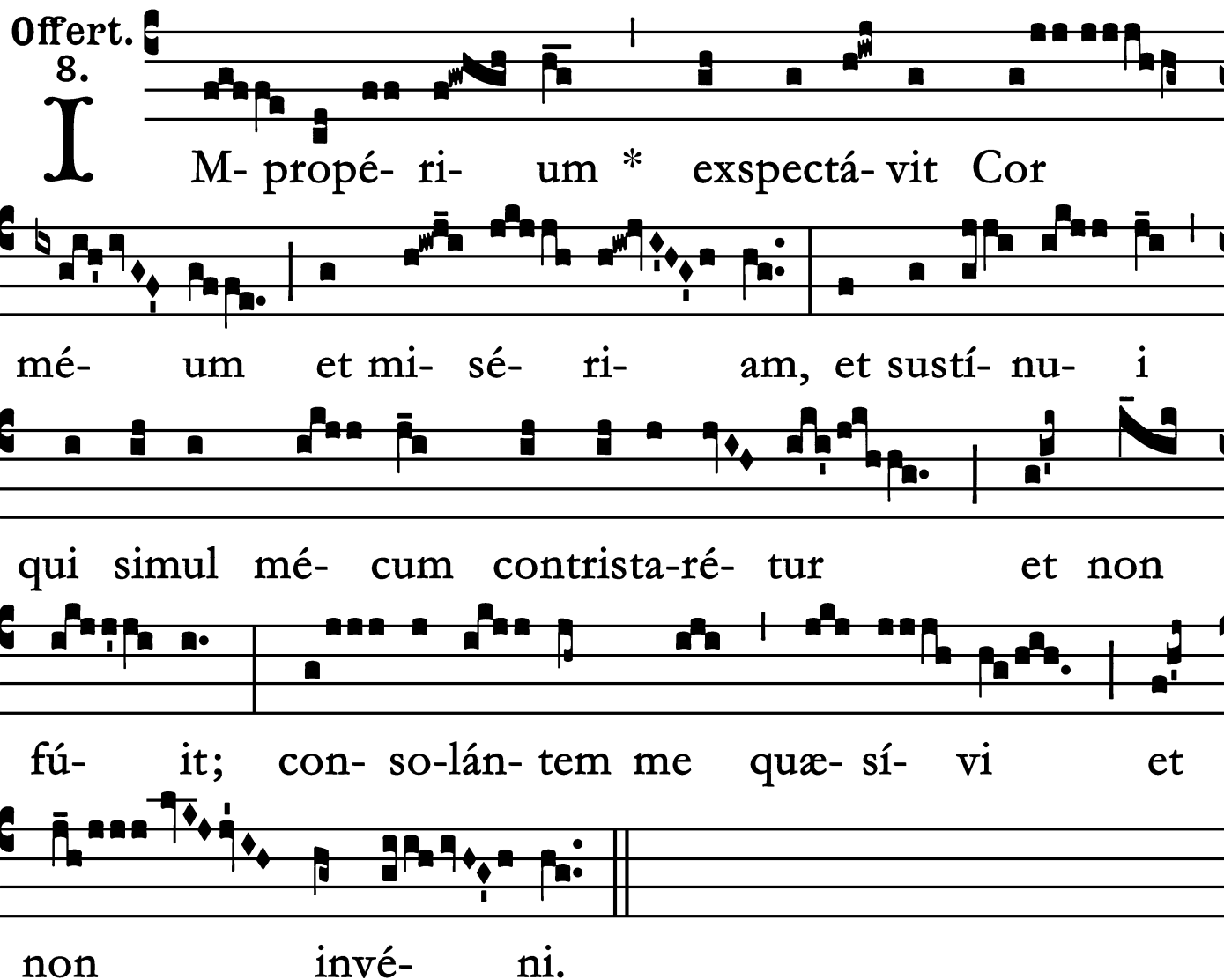
stras re-trí- bu- it * nó- bis.



Votive Mass of the Sacred Heart of Jesus

Offertory
(Outside Paschal Time)

Offert. 8.



M- propé- ri- um * exspectá- vit Cor
mé- um et mi- sé- ri- am, et sustí- nu- i
qui simul mé- cum contrista- ré- tur et non
fú- it; con- so- lán- tem me quæ- sí- vi et
non invé- ni.

Votive Mass of the Sacred Heart of Jesus

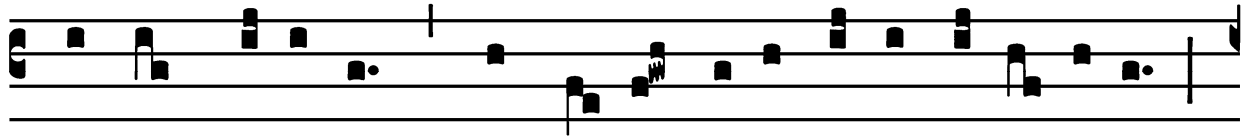
Communion

(Outside Paschal Time)

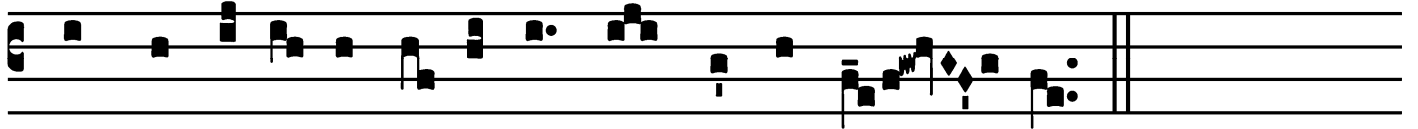
Comm.

7.

U



- nus mí-li-tum * lánce- a látus é-jus apé-ru- it,



et contínu- o ex-í-vit sán-guis et á- qua.