

Introit

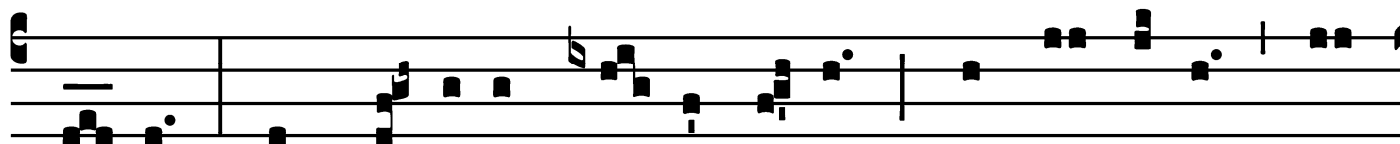
Intr.

1.

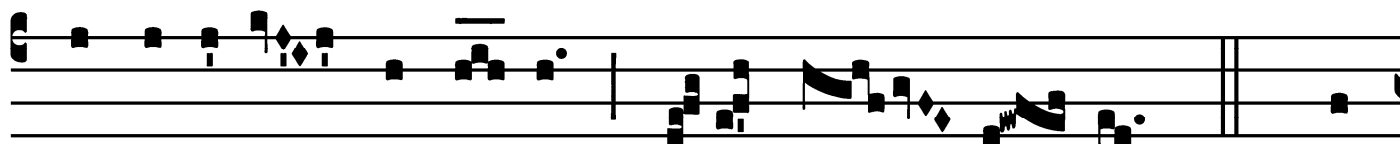
S



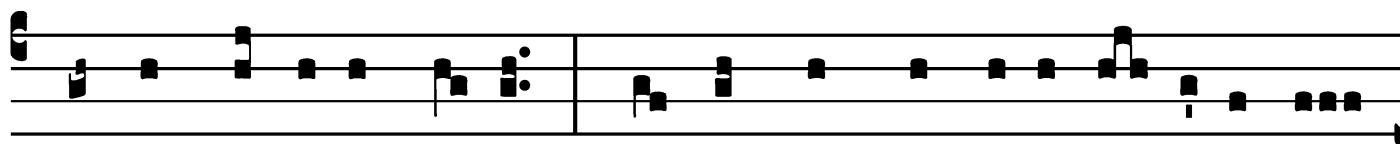
Tá-tu-it * é-i Dó-mi-nus te-staméntum



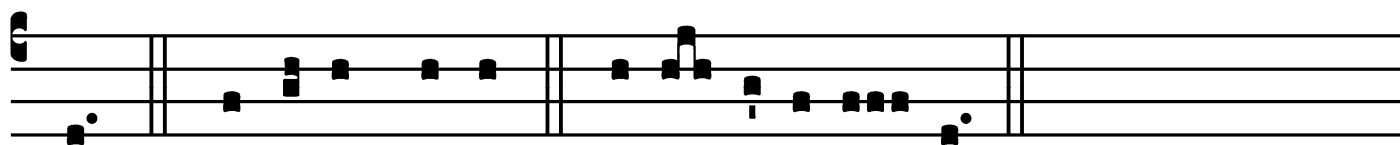
pá-cis, et príncipem fé-cit é-um : ut sit íl-li sa-



cerdó-ti-i dígni-tas in æ-tér-num. *Ps.* Me-



ménto Dómine Dá-vid : * et ómnis mansu-e-tú-dinis é-



jus. Gló-ri-a Pátri. E u o u a e.

Gradual

Grad.

5.

E

X-ál-tent é- um * in ecclé- si- a

plé- bis : et in cáthedra se-ni-

ó- rum láudent é- um.

V. Confi-te-án- tur Dómi-

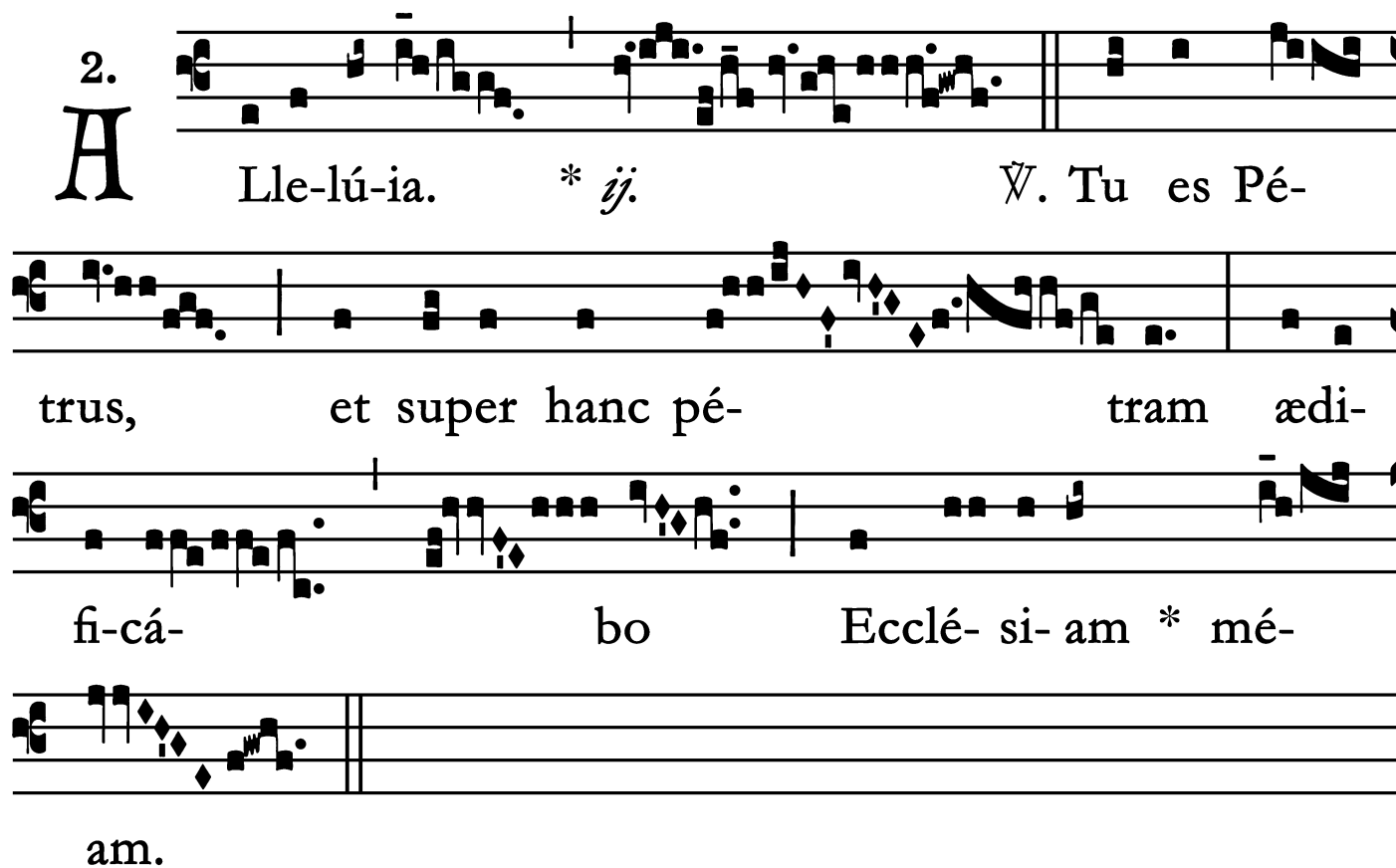
no mi-se-ri-córdi-æ

é- jus : et mi- rabí-

li- a é- jus fí- li- is * hómi-num.

Alleluia

2.
A



Lle-lú-ia. * *ij.* V̇. Tu es Pé-
trus, et super hanc pé-tram ædi-
fi-cá-bo Ecclé-si-am * mé-
am.

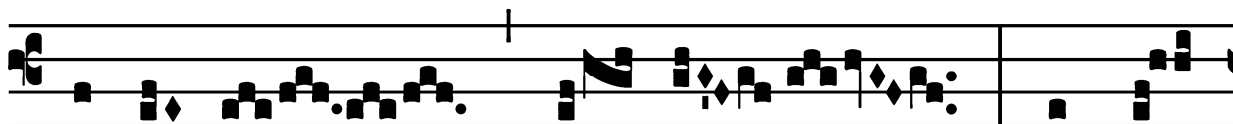
Tract

(Page 1 of 2)

Tract.

2.

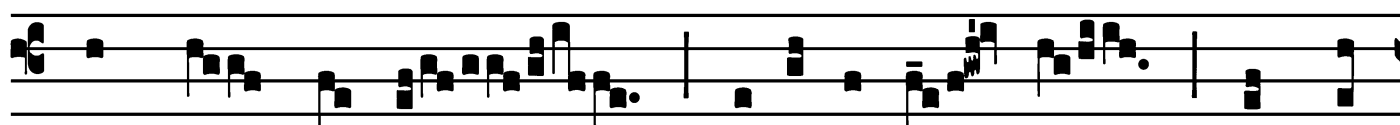
T



U es

* Pé- trus,

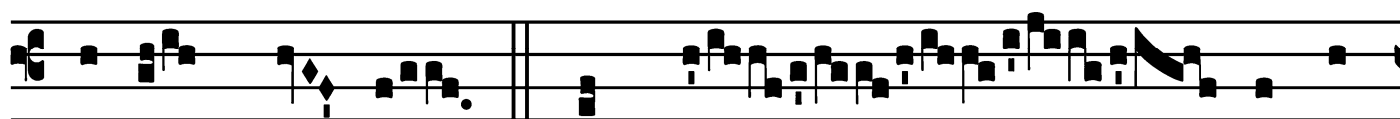
et su-



per hanc pé-tram

ædi- fi- cá- bo

Ecclé-



si- am mé- am. ∇ . Et pór-

tæ ín-

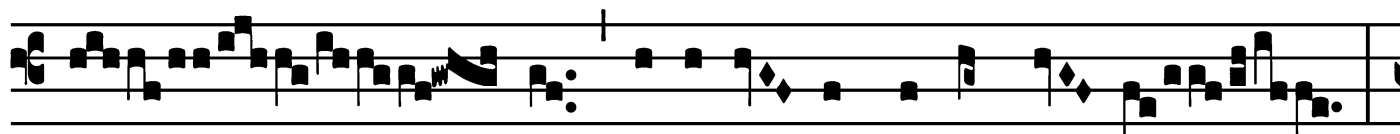


fe- ri non præva- lébunt advérsus é- am :



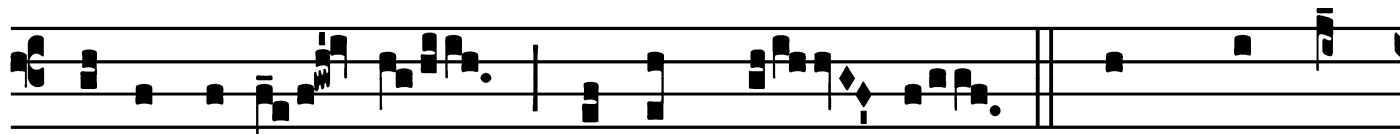
et tí-bi dá- bo

cláves régni cœ- ló- rum. ∇ . Quod-



cúm-

que ligáve- ris super tér- ram,



é-rit ligá- tum

et in cœ- lis. ∇ . Et quodcúm-

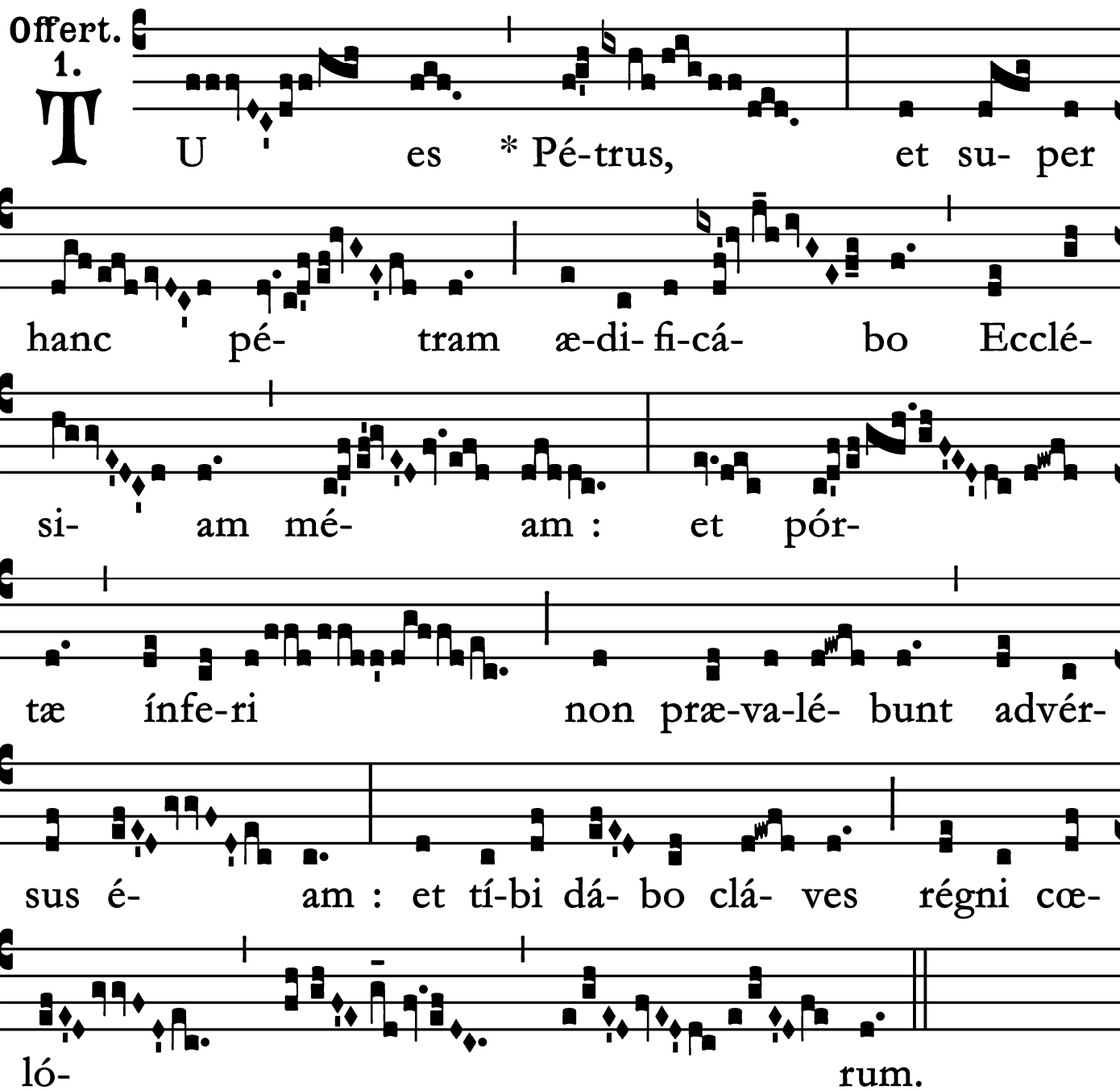
Tract

(Page 2 of 2)

que sòlve- ris super
tér- ram, é-rit so-lú- tum et
in * còe- lis.

Offertory

Offert. 1.



T U es * Pé-trus, et su-per
hanc pé-tram æ-di-fi-cá-bo Ecclé-
si-am mé-am : et pór-
tæ ínfe-ri non præ-va-lé-bunt advér-
sus é-am : et tí-bi dá-bo clá-ves régni cœ-
ló-rum.

Communion

Comm. 6. **T**

U es Pé-trus, * et su-per hanc pé-tram ædi-
fi-cábo Ecclé-si-am mé-am.