

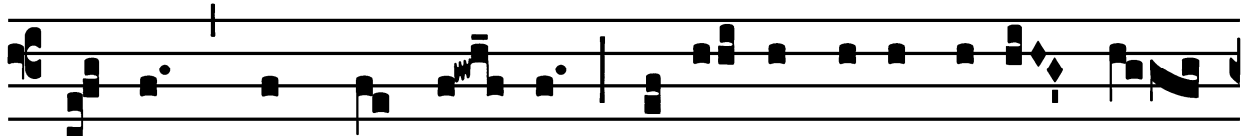
Our Lady of Guadalupe - December 12

*Introit*

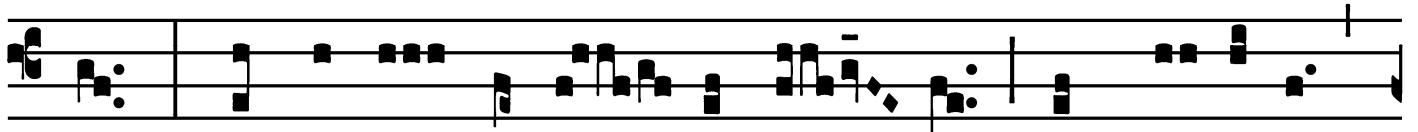
Intr.

2.

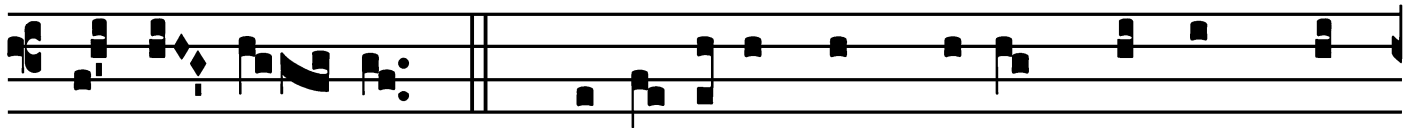
**S**



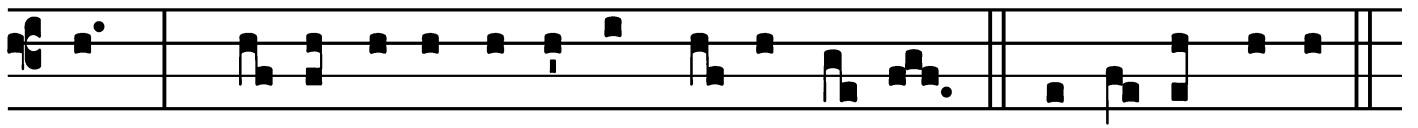
Alve \* sáncta Pá- rens, ení- xa pu-érpera Ré-



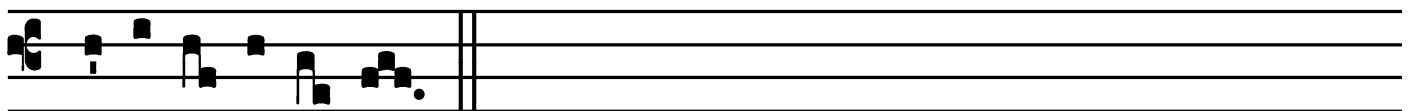
gem, qui cœ-lum terrám-que ré- git in sæ-cu-la



sæ-cu- ló- rum. *Ps.* Eructávit cor mé-um vérbum bó-



num : \* dí-co égo ópe-ra mé- a ré-gi. Gló-ri- a Pátri.



E u o u a e.

Our Lady of Guadalupe - December 12

*Gradual*

Grad.

5.

**Q**

Uæ est í- sta, \* quæ progré- di-tur qua-si

auró- ra consúrgens, púlchra ut lú- na, e-

lé-cta ut sol?

∇. Qua-si árcus

re-fúlgens

in-

ter nébu-las gló- ri- æ, et qua-si flos ro-

sá- rum

in di-ébus \* vér-

nis.

Our Lady of Guadalupe - December 12

*Alleluia*

8.  
**A** L-le- lú- ia. \* *ij.*

Ÿ. Fló- res apparu-é- runt in

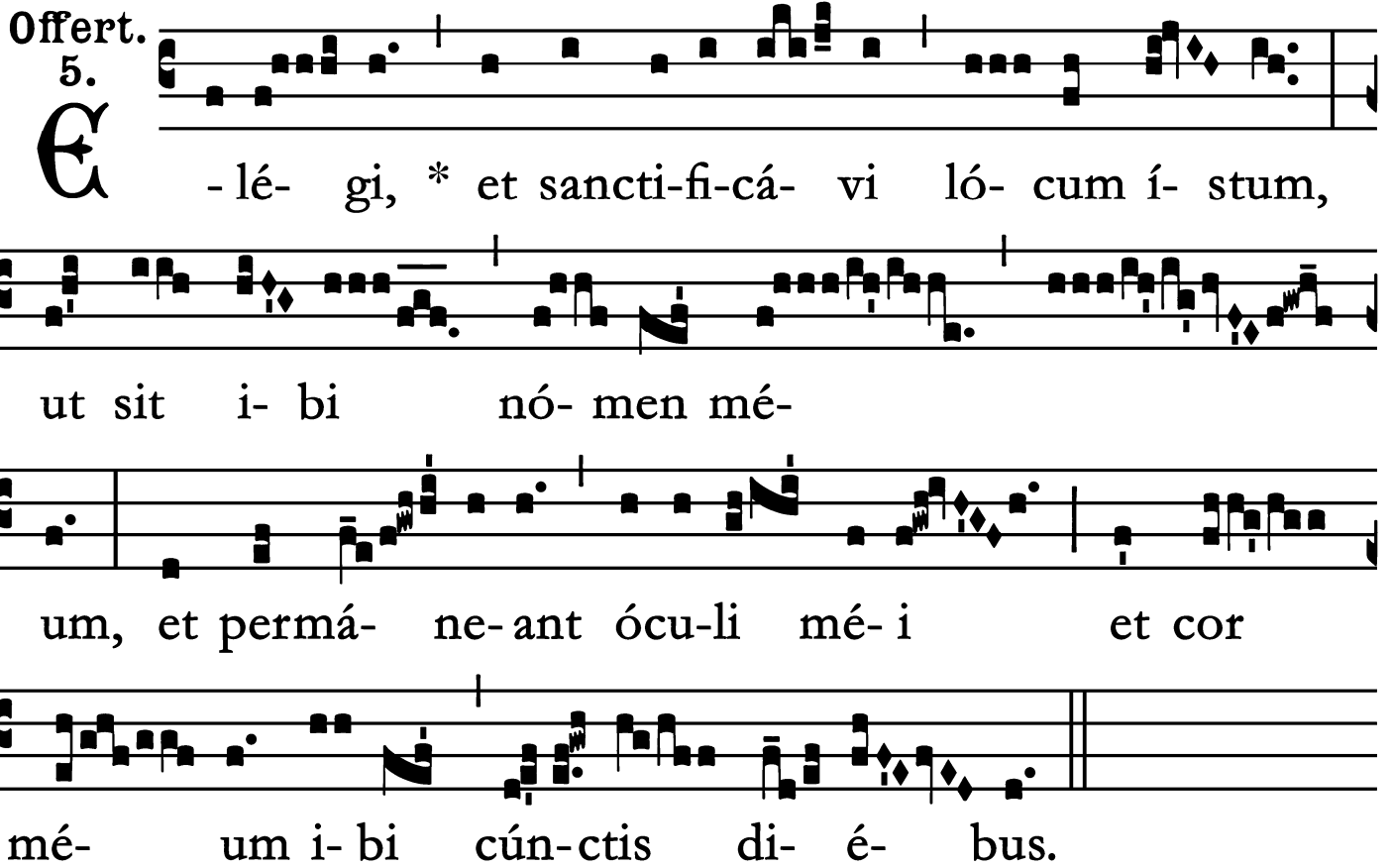
tér-ra nó- stra, témpus puta-ti-ó- nis \* ad-

vé- nit.

Our Lady of Guadalupe - December 12

*Offertory*

Offert.  
5.



**E** - lé- gi, \* et sancti-fi-cá- vi ló- cum í- stum,  
ut sit i- bi nó- men mé-  
um, et permá- ne-ant ócu-li mé- i et cor  
mé- um i- bi cún-ctis di- é- bus.

Our Lady of Guadalupe - December 12

*Communion*

Comm. 8.



**N** ON fé- cit \* tá- li- ter ómni na- ti- ó- ni : et ju-  
dí- ci- a sú- a non mani- festá- vit é- is.