

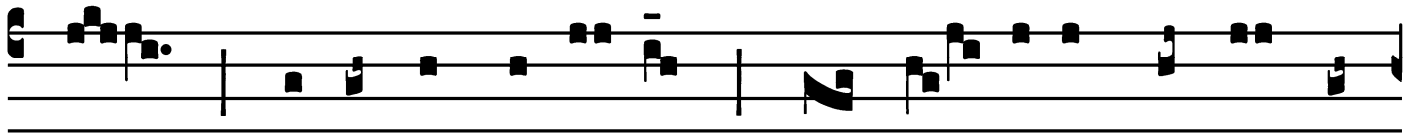
## Introit

Intr.  
3.

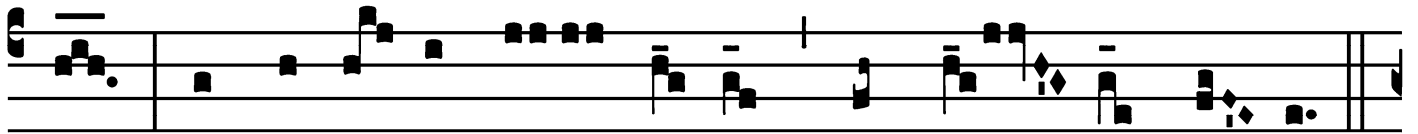


**B**

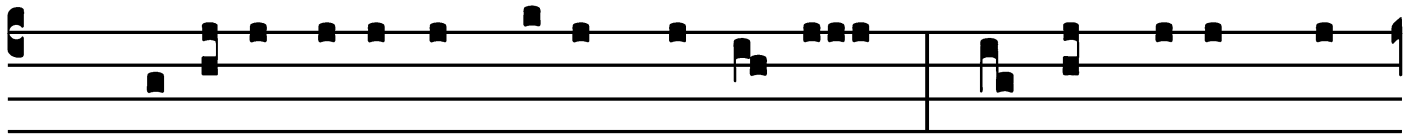
Ene-dí-ci-te Dómi-num \* ómnes Ange- li é-



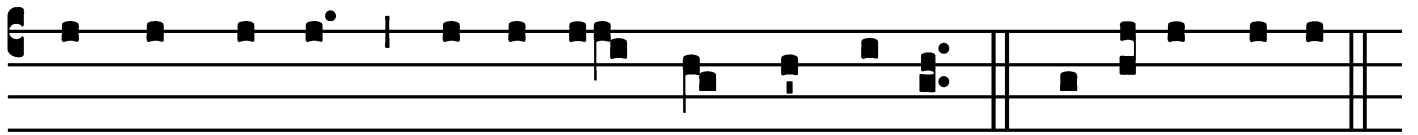
jus : pot-éntes virtú-te, qui fá-ci-tis vérbum é-



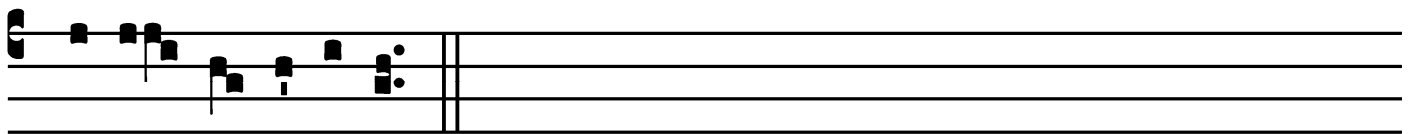
jus, ad audi- éndam vó-cem sermó- num é- jus.



*Ps.* Bénedic ánima mé-a Dómi-no : \* et ómni- a quæ

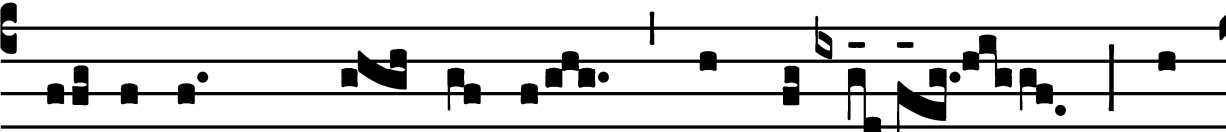


intra me sunt, nómi-ni sáncto é-jus. Gló-ri- a Pátri.



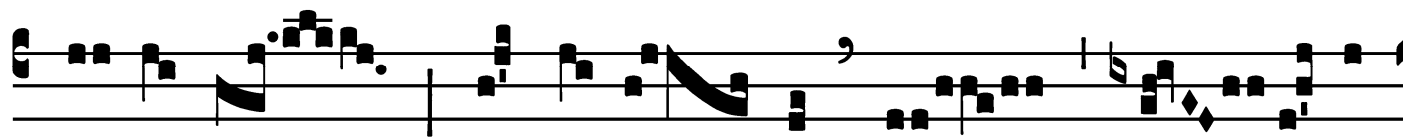
E u o u a e.

*Gradual*

Grad. 5. 

**A**

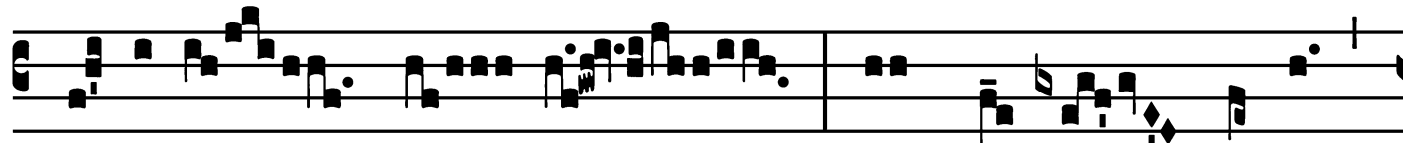
Nge-lus \* Dó- mi- ni Rápha- òl ap-



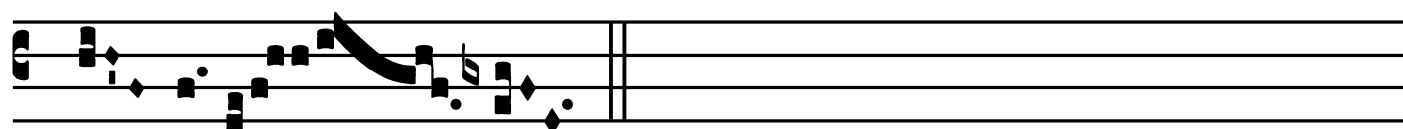
pre-héndit et li-gá- vit dá- mo-



nem. *V.* Má- gnus



Dóminus nó- ster, et mágna vírtus



\* é- jus.

# Alleluia

4.  
**A** Lle- lú- ia. \* *ij.*

∩. In conspé- ctu Ange- ló-  
rum psállam tí- bi : ado-  
rá- bo ad témplum sánctum tú- um, et confi-  
té- bor nómi- ni tú- o,  
\* Dómi- ne.

St. Raphael, Archangel - October 24

## Offertory

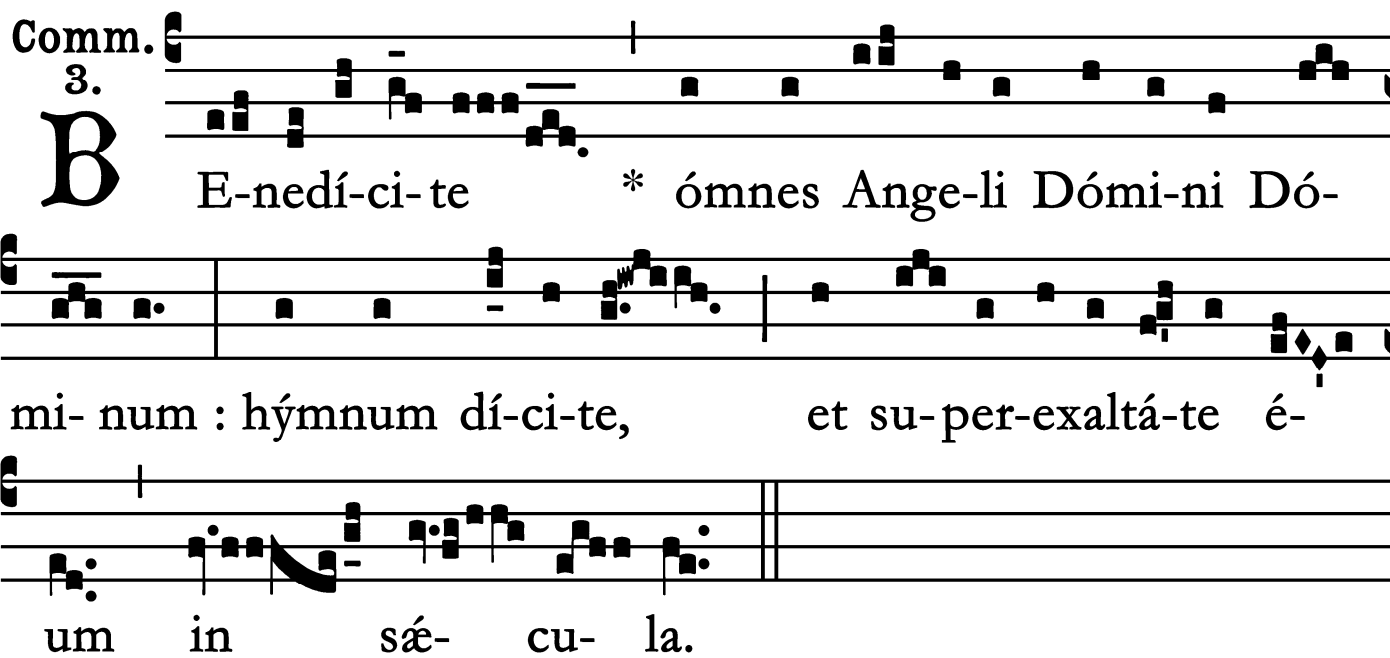
Offert. 1.

*S* Té- tit \* Ange- lus juxta á-  
ram tém- pli, há- bens thu-ríbu- lum áu-  
re-um in mánu sú- a : et dá-ta sunt é- i  
incénsa múl-ta : et ascén-  
dit fú- mus a- ró- ma- tum in conspéctu Dé- i,  
alle- lú-ia.

St. Raphael, Archangel - October 24

## Communion

Comm. 3.



**B** E-nedí-ci-te \* ómnes Ange-li Dómi-ni Dó-  
mi-num : hýmnum dí-ci-te, et su-per-exaltá-te é-  
um in sáe-cu-la.