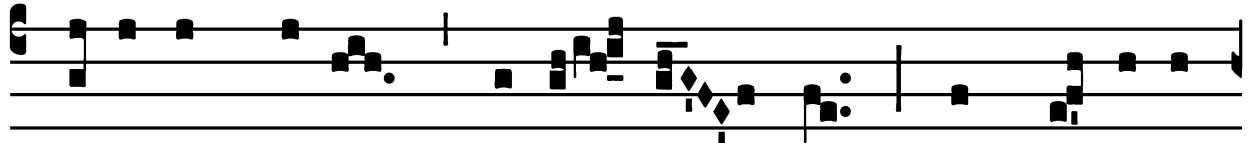


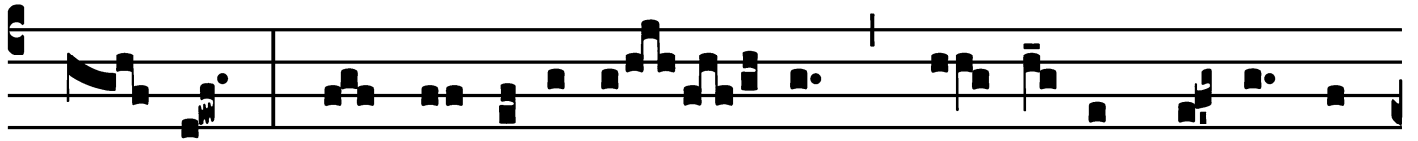
Introit

Intr.
3.

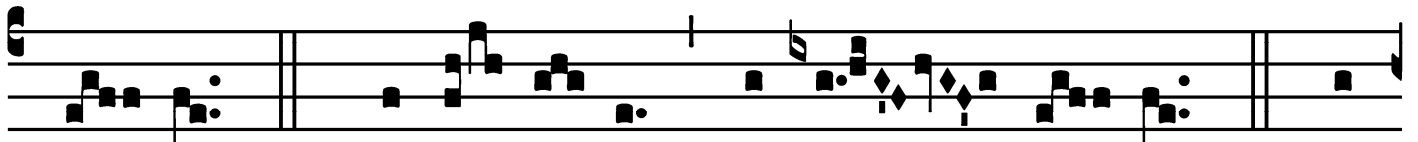
C



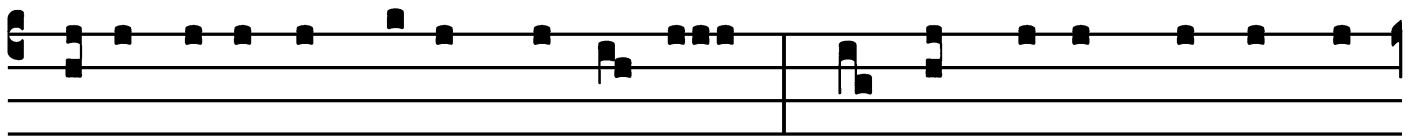
Ari-tas Dé-i * diffú- sa est in córdibus



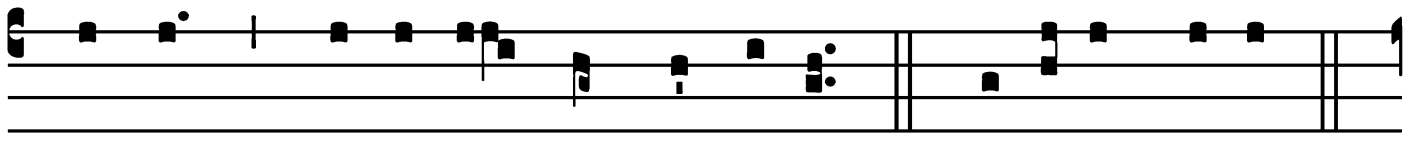
nó- stris per inhabi-tán- tem Spí- ri- tum é- jus in



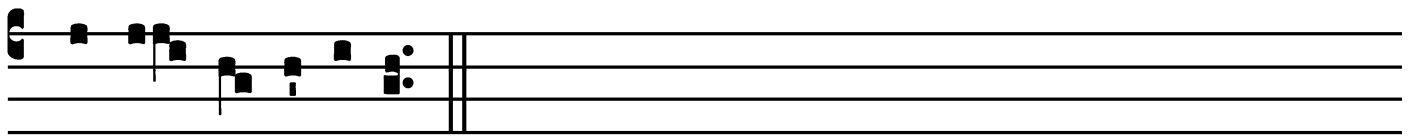
nó- bis. *T.P.* Alle- lú- ia, al-le- lú- ia. *Ps.* Bé-



nedic ánima mé-a Dómi-no : * et ómni- a quæ intra



me sunt, nómi-ni sáncto é- jus. Gló-ri- a Pátri.



E u o u a e.

Gradual

Grad.

5.

V

Ení- te fí- li- i, * audí- te me : timó-rem

Dómi-ni docébo vos.

∩. Accédi-te

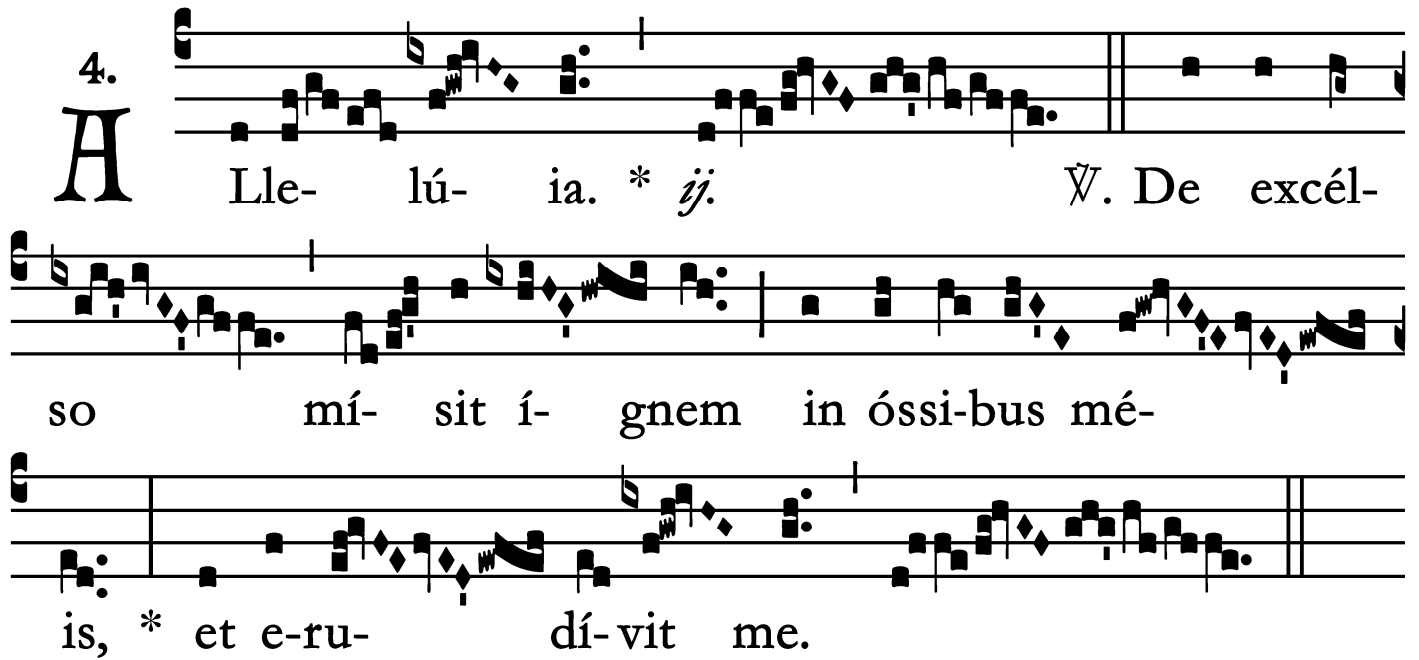
ad é- um, et

illumi-námi- ni : et fá-ci- es véstræ * non con-fun-

déntur.

Alleluia

4.
A



Lle- lú- ia. * *ij.* *V.* De excél-
so mí- sit í- gnem in óssi-bus mé-
is, * et e-ru- dí-vit me.

St. Philip Neri, Confessor – May 26

Second Alleluia

(In Paschal Time)

1.
A Lle- lú- ia. *

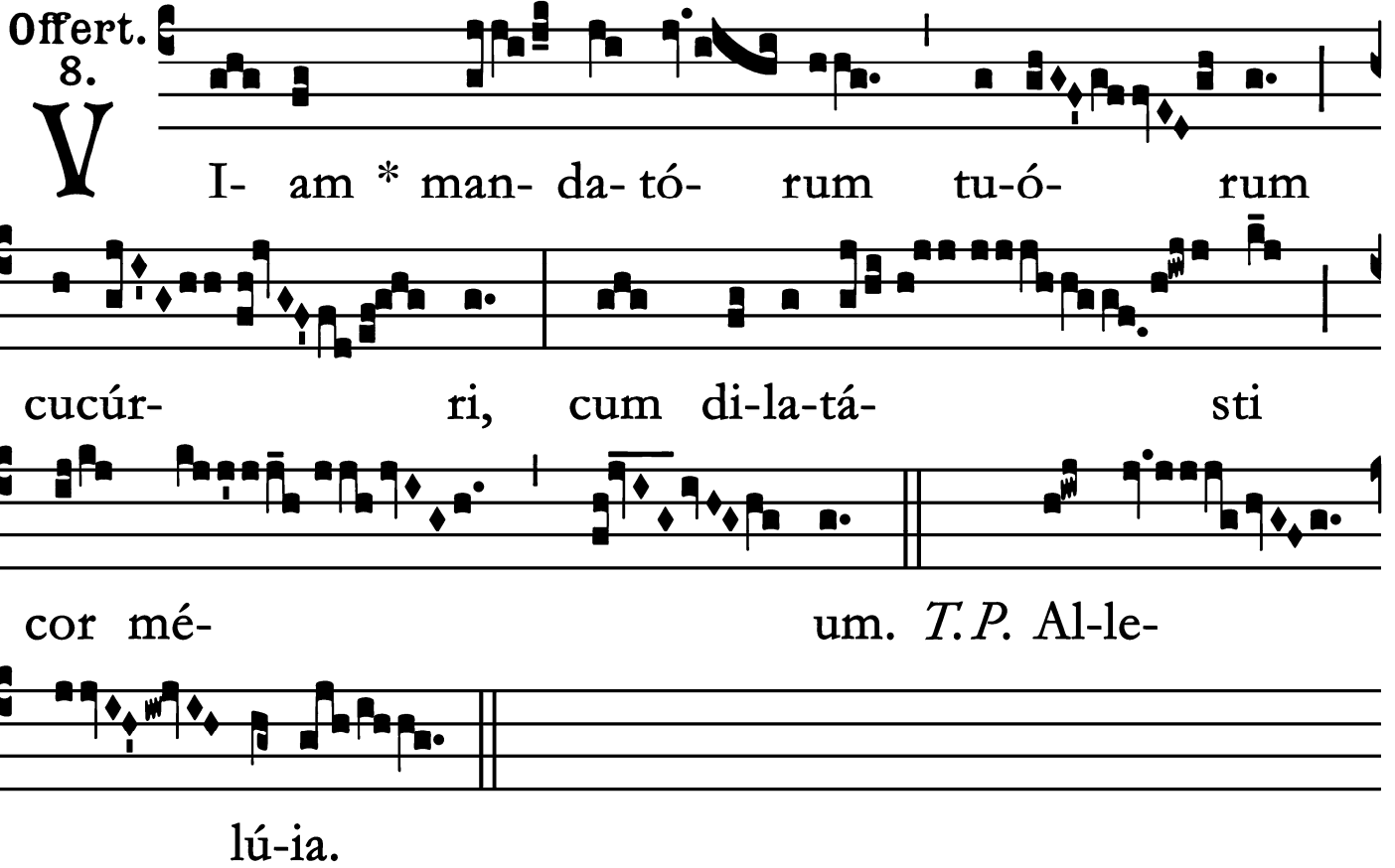
∩. Con-cá-lu- it cor mé- um in- tra me :

et in medi- ta- ti- ó- ne mé- a exardé-

scet * í- gnis.

Offertory

Offert.
8.



V I- am * man- da- tó- rum tu-ó- rum
cucúr- ri, cum di-la-tá- sti
cor mé- um. *T.P.* Al-le-
lú-ia.

St. Philip Neri, Confessor – May 26

Communion

Comm. 1.

COR me- um * et cá-ro mé- a exsulta-
vé- runt in Dé- um ví- vum. *T.P.* Alle-lú- ia.