


Introit

Intr.
1.



S Tá-tu- it * é- i Dó- mi- nus te- staméntum
pá- cis, et príncipem fé- cit é- um : ut sit íl- li sa-
cerdó- ti- i dígni- tas in æ- tér- num. *Ps.* Me-
ménto Dómine Dá- vid : * et ómnis mansu- e- tú- dinis é-
jus. Gló- ri- a Pátri. E u o u a e.

Gradual

Grad.

5.

G

C-ce * sacérdos má- gnus, qui in di-é-

bus sú- is plá- cu- it Dé- o.

∇. Non est invéntus sími- lis íl-li,

qui conservá-

ret * légem Excél- si.

Alleluia

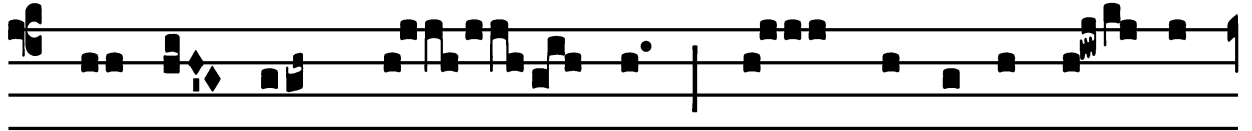
5.
A Lle- lú- ia. * *ij.*

∇. Be- á- tus vir sán- ctus Mar-
tí- nus, úr- bis Turó- nis, requi- é- vit : quem susce-
pé- runt An- ge- li atque Archán- ge- li, Thróni, Domi-
na- ti- ó- nes * et Vir- tú- tes.

St. Martin of Tours, Bishop and Confessor – November 11

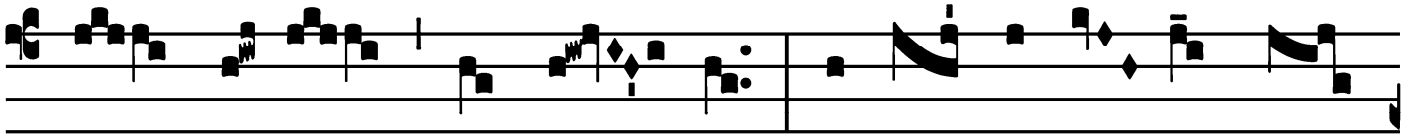
Offertory

Offert.
2.

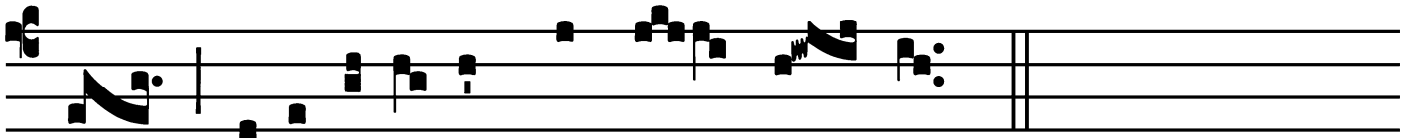


V

E- ri- tas mé- a * et mi-se-ri-cór- di-



a mé- a cum í- pso : et in nómi- ne mé-



o exaltábi- tur córnu é- jus.

Communion

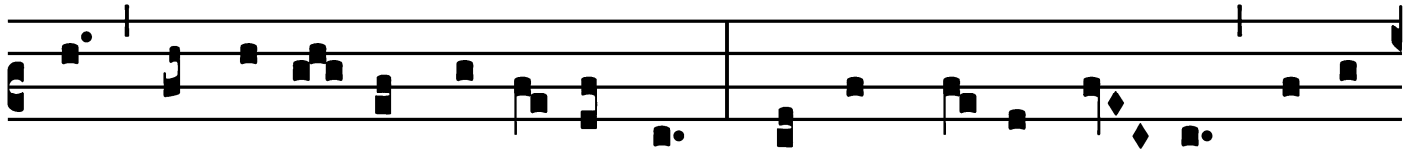
Comm.

3.

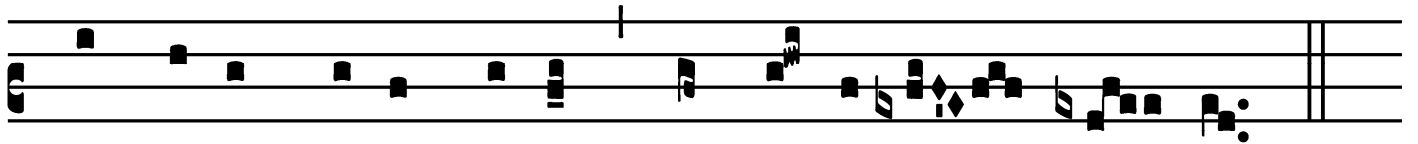
B



E- á-tus sér- vus, * quem, cum vé- ne-rit Dómi-



nus, invéne- rit vi-gi- lán-tem : amen dí-co vó- bis, super



ómni- a bóna sú- a constí- tu- et é- um.