

St. Joseph the Workman - May 1

*Introit*

Intr.

3.

**S**

Api- énti- a \* réddi- dit jú- stis mercédem labó-

rum su- ó- rum, et de- dúxit íl- los in ví- a

mi- rá- bi- li, et fú- it íl- lis in ve- laméto

di- é- i et in lú- ce stellá- rum per nó-

ctem. *T. P.* Alle- lú- ia, alle- lú- ia. *Ps.* Ni- si Dóminus

ædi- fi- cáve- rit dómum, \* in vánum labó- rant qui ædí-

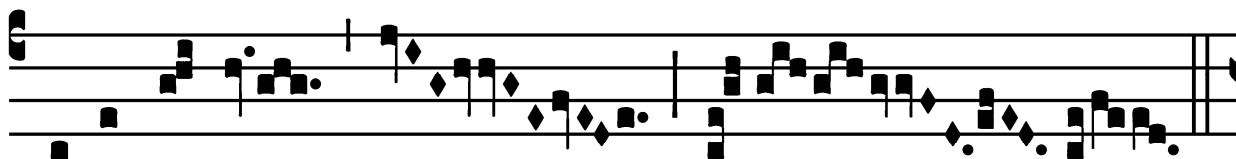
fi- cant é- am. Gló- ri- a Pátri. E u o u a e.

St. Joseph the Workman - May 1

*Alleluia*

(In Paschale Time)

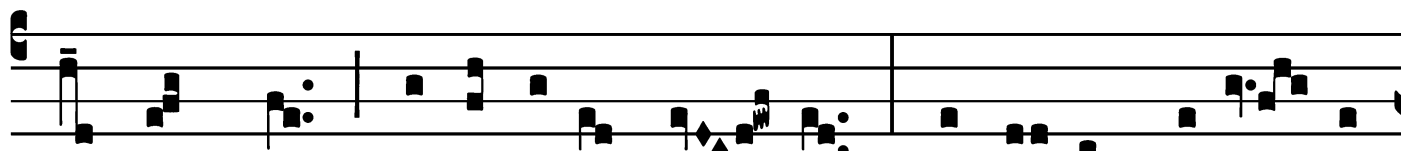
1.  
**A**



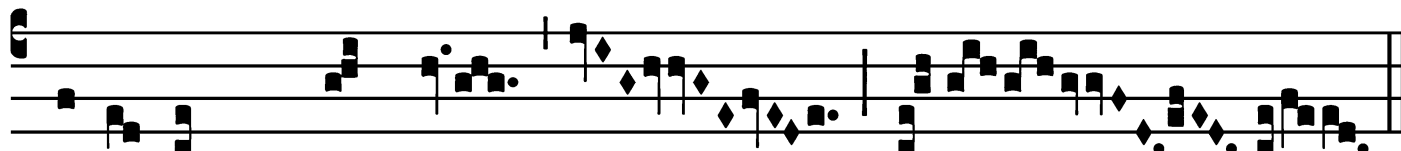
Lle-lú- ia. \* *ij.*



∇. De qua- cúmque tri-bu-la-ti-ó- ne clamá- ve-



rint ad me, exáudi- am é- os, et é- ro proté- ctor



e-ó-rum \* semper.

St. Joseph the Workman - May 1

*Alleluia*

8.  
**A** L-le-lú- ia. \*

∇. Fac nos innó-cu-  
am, Jó- seph, decúr- re-re  
ví- tam : sí- que tú- o semper tú-  
ta \* patro-cí- ni- o.

St. Joseph the Workman - May 1

*Offertory*

Offert.  
5.

**B**

O-ni- tas Dó-mi- ni \* Dé- i nó- stri

sit super nos, et ópus má- nu- um nostrá- rum


se-cún-da nó- bis, et ópus má- nu- um

nostrá- rum secún- da. *T. P.* Alle-

lú- ia.

St. Joseph the Workman - May 1

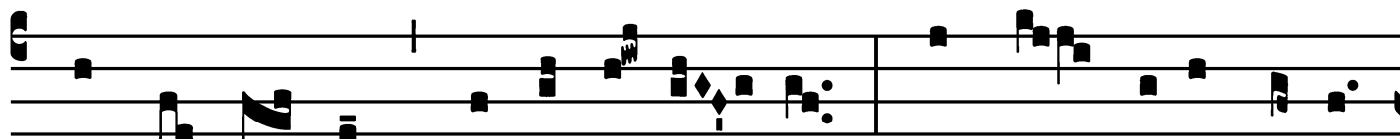
*Communion*

Comm. 

6.

U

Nde hu-ic \* sa-pi- énti- a hæc et vir-tú- tes?



Nonne hic est fábri fí- li- us? Nonne máter é-jus



† dí-ci-tur Ma-rí- a? Al-le- lú- ia.



*Extra T. P.* † dí-ci- tur Ma- rí- a?