

## *Introit*

Intr.  
8.

**D**

Ispér- sit, \* dé- dit paupé- ri- bus : justí-

ti- a é- jus má- net in sáe- cu- lum sáecu- li :

cór- nu é- jus exaltá- bi- tur in gló- ri- a.

*Ps.* Be- átus vir qui tímet Dómi- num : \* in mandá- tis é- jus

vó- let nimis. Gló- ri- a Pátri. E u o u a e.

## Gradual

Grad.  
2.

**D**

Ispérsit, \* dé- dit paupé- ri- bus : justí-

ti- a é- jus má- net in sáe- cu- lum

sáe- cu- li.

∇. Pó tens in

tér-

ra é- rit

sémen é-

jus : ge-nerá-ti-o rectó-

rum

\* be- nedicé- tur.

Feast of St. Joachim, Father of the Blessed Virgin Mary, Confessor - August 16

*Alleluia*

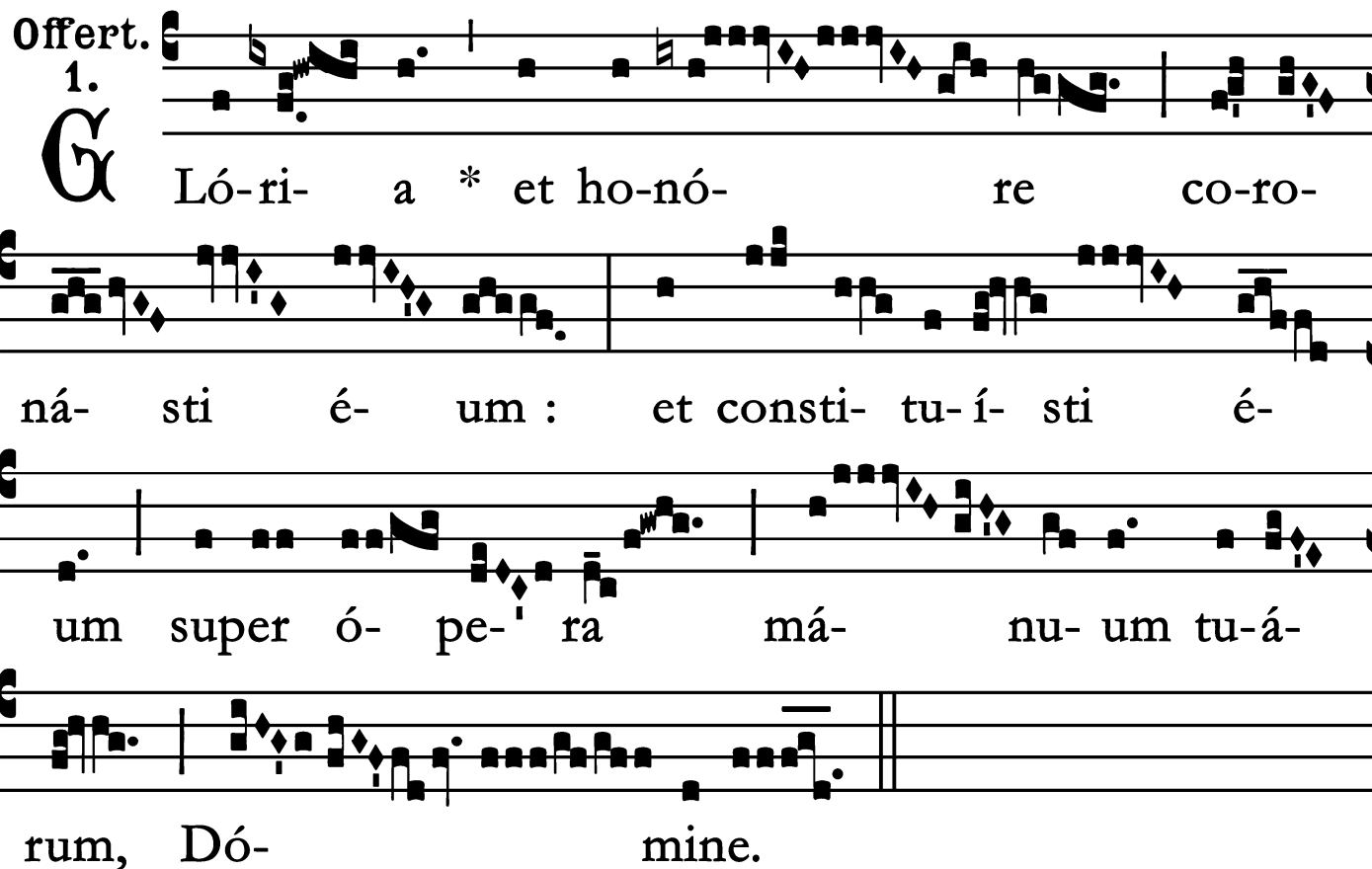
1.  
**A** L-le- lú- ia. \* *ij.*

Ÿ. O Jó- achim sán- cte, cón- jux An- næ,  
pá- ter ál- mæ Vír- ginis, hic fá- mu- lis cónfer  
sa- lú- tis \* ó- pem.

Feast of St. Joachim, Father of the Blessed Virgin Mary, Confessor - August 16

# Offertory

Offert. 1.



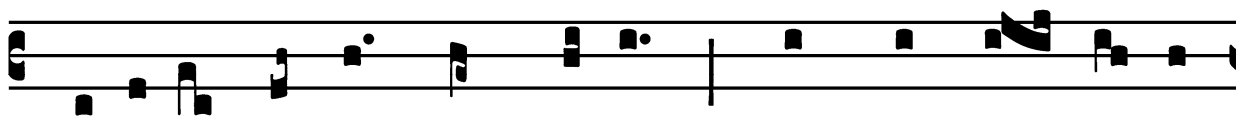
**G** Ló-ri- a \* et ho-nó- re co-ro-  
ná- sti é- um : et consti- tu- í- sti é-  
um super ó- pe- ra má- nu- um tu- á-  
rum, Dó- mine.

## *Communion*

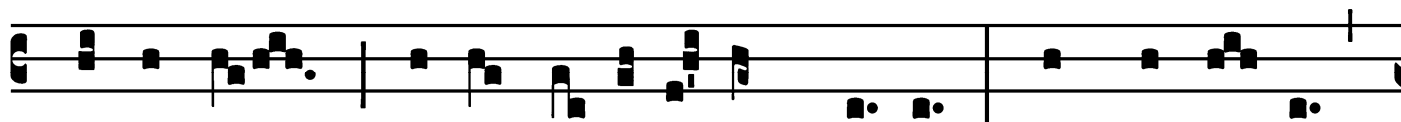
Comm.

7.

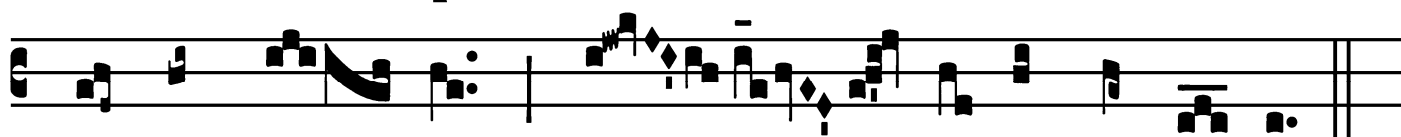
**F**



Idé-lis sérvus \* et prudens, quem constí- tu- it



Dómi-nus super famí-li- am sú- am : ut det íl- lis



in témpo- re trí- ti- ci mensú- ram.