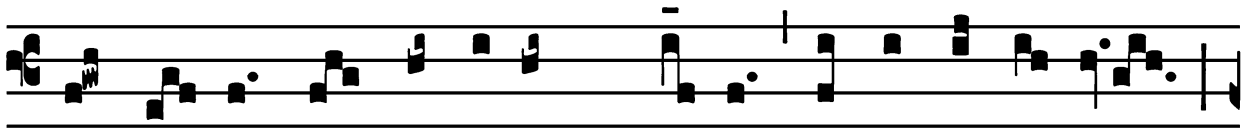


## Introit

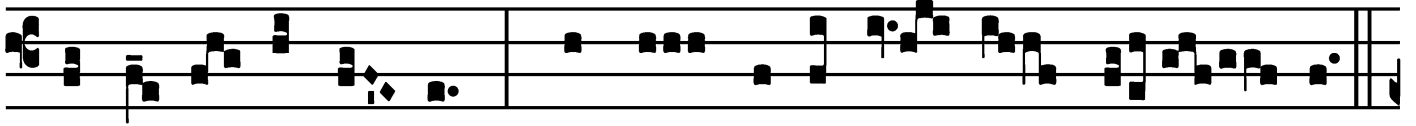
Intr.

2.

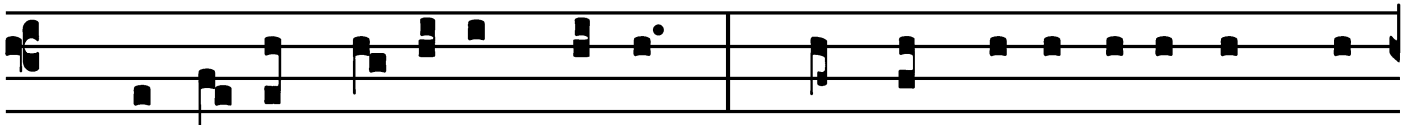
**G**



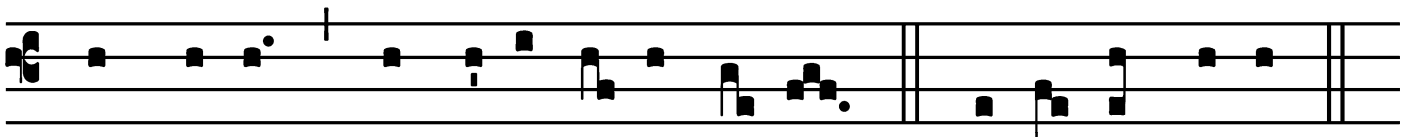
X ó- re \* in- fánti- um, Dé- us, et lacténti- um



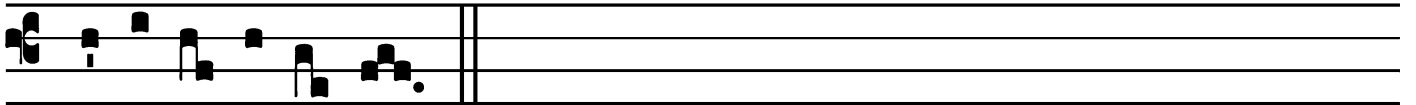
perfe- cí- sti láu- dem propter in- imí- cos tú- os.



*Ps.* Dómi- ne Dóminus nóster : \* quam admi- rá- bi- le est nó-



men tú- um in uni- vérsa térra! Gló- ri- a Pátri.



E u o u a e.

*Gradual*

Grad.

5.

**A**

- nima nó- stra, \* sicut pás- ser,

e- répta est de láque-o ve- nán- ti- um.

∇. Láque-us

contrí- tus est, et nos libe- rá-

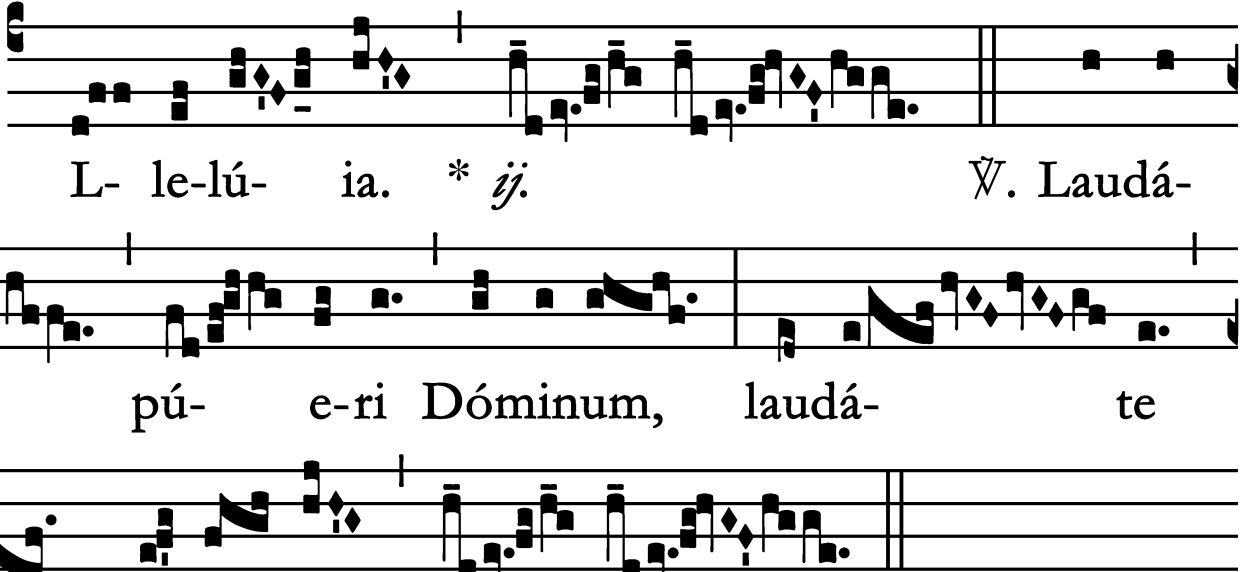
ti sú- mus : ad- jutó- ri- um nostrum

in nómine Dó- mi- ni, qui fé- cit cé- lum

\* et tér- ram.

# Alleluia

4.  
**A**



L- le-lú- ia. \* *ij.*      *Ÿ.* Laudá-  
te      pú- e-ri Dóminum,      laudá- te  
nómen \* Dómi- ni.

*Tract*

Tract.

8.

**E**

F-fudé- runt \* sánguinem san-

ctó- rum, vel-ut á- quam, in circú- i- tu Je- rúsa- lem.

*V̇*. Et non é- rat

qui se- pe- lí- ret.

*V̇*. Víndi- ca, Dó- mi- ne, sánguinem sanctó- rum

tu- ó- rum, qui effú- sus

est \* su- per tér- ram.

# Offertory

Offert.  
2.

**A**

- nima \* nó-

stra, sic- ut pás-

ser, e-répta est de lá-que- o

ve- nán-

ti- um : láque-

us contrí-tus est, et nos

li-be- rá-

ti

súmus.

## *Communion*

Comm.

7.

**V**

OX in Ráma \* audí-ta est, plorá- tus et u-lu-lá-

tus : Ráchel pló- rans fí-li- os sú- os, nó- lu- it con-so-

lá-ri, qui- a non sunt.