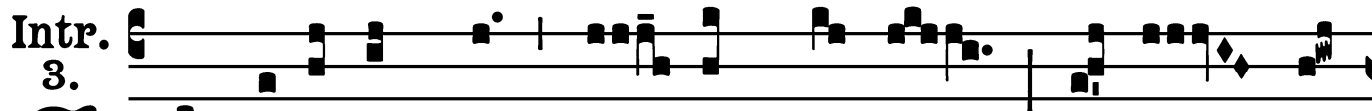
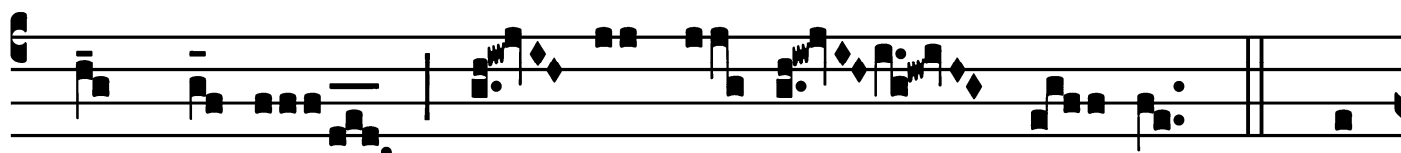


Introit

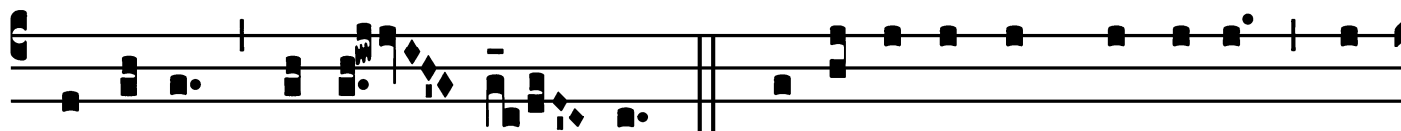


S

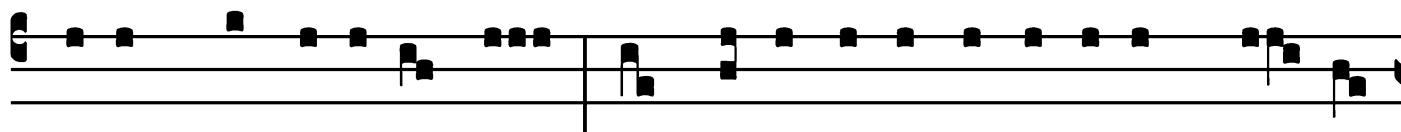
I dí-li-gis me, * Sí- mon Pé-tre, pásce á-



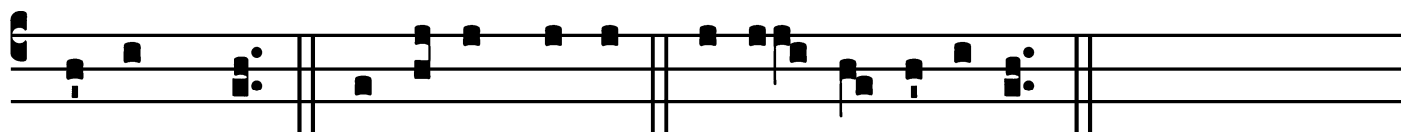
gnos mé- os, pá- sce ó- ves mé- as. *T.P.* Al-



le-lú-ia, alle- lú- ia. *Ps.* Exaltábo te, Dómine, quó-



ni- am suscepísti me : * nec de-lectásti in-imícos mé- os



super me. Gló-ri- a Pátri. E u o u a e.

St. Gregory VII, Pope and Confessor – May 25

Gradual
(Outside Paschal Time)

Grad.

5.

G

X-ál-tent é- um * in ecclé- si- a

plé- bis : et in cáthedra se-ni-

ó- rum láudent é- um.

V. Confi-te-án- tur Dómi-

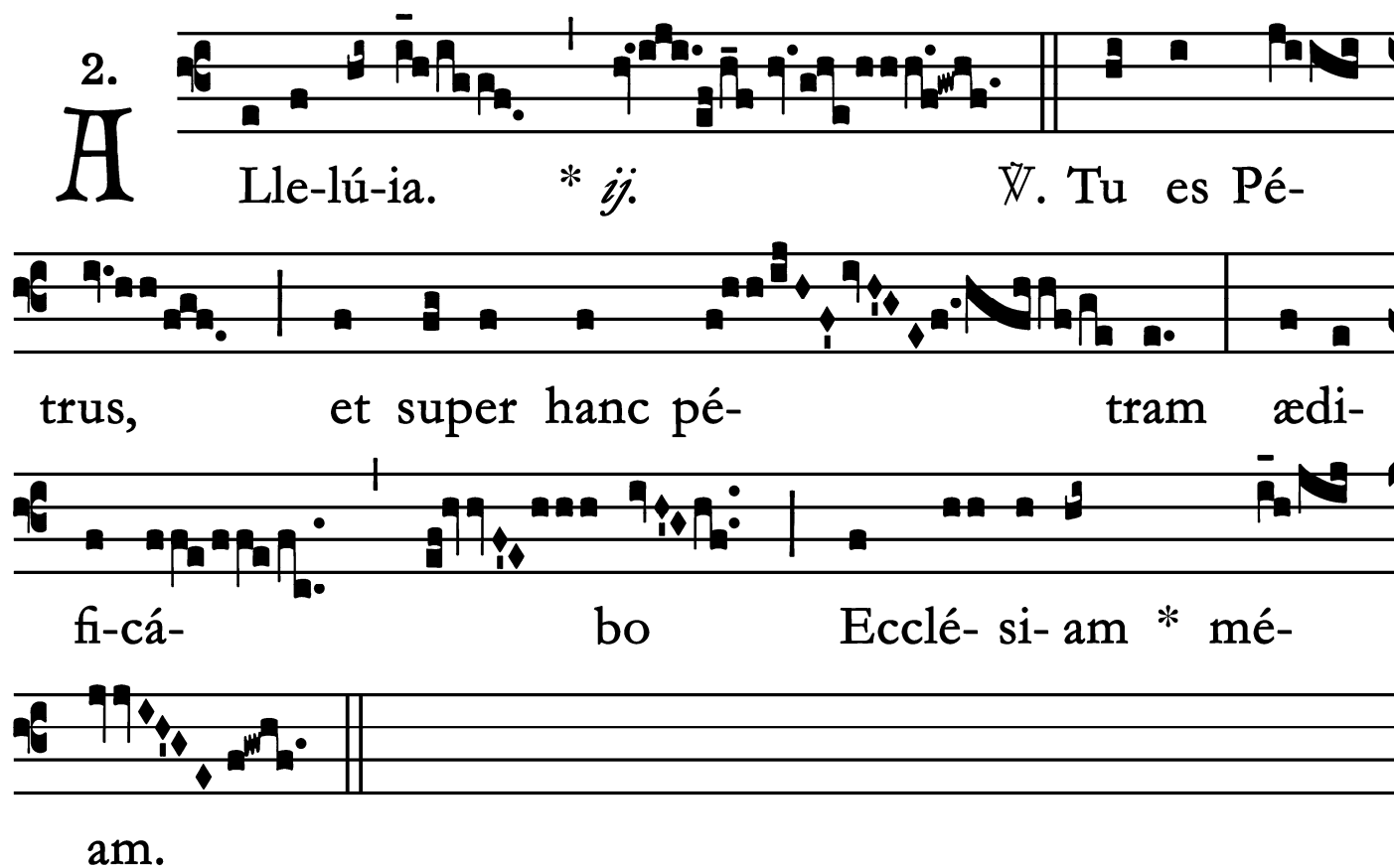
no mi-se-ri-córdi-æ

é- jus : et mi- rabí-

li- a é- jus fí- li- is * hómi-num.

Alleluia

2.
A



Lle-lú-ia. * *ij.* V̇. Tu es Pé-
trus, et super hanc pé- tram ædi-
fi-cá- bo Ecclé- si- am * mé-
am.

St. Gregory VII, Pope and Confessor – May 25

Second Alleluia

(In Paschal Time)

4.
A L-le- lú-ia. *

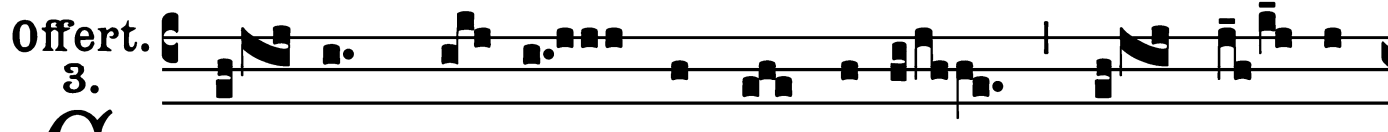
∨. Constí-tu-es é-os prínci- pes

su- per ómnem tér-

ram : mé-mo-res é- runt nómi-nis tú- i,

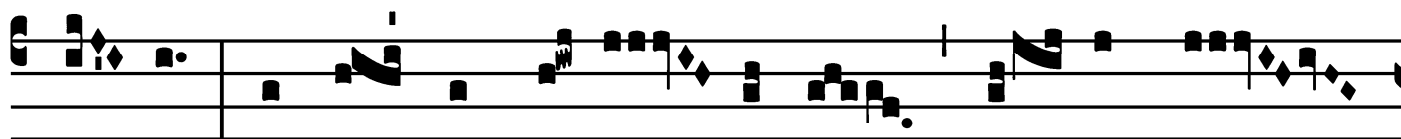
* Dó- mine.

Offertory

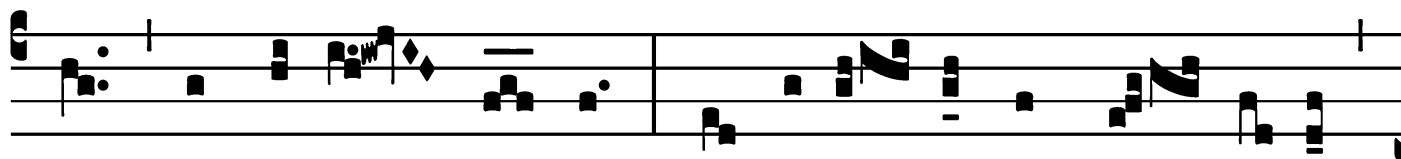


E

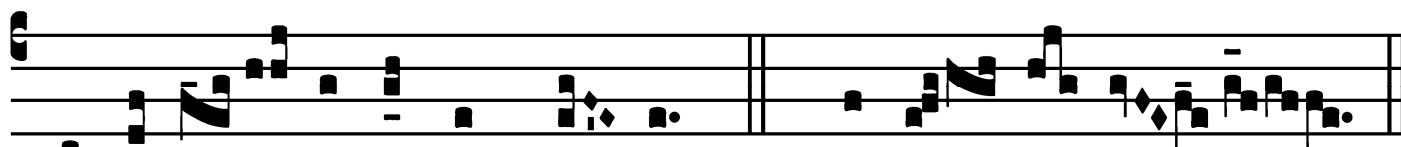
C- ce * dé- di vérba mé- a in ó- re



tú- o : ecce constí- tu- i te su- per gén-



tes, et super ré- gna, ut evél- las et dé- stru- as,



et ædí- fi- ces et plán- tes. *T. P.* Alle- lú- ia.

St. Gregory VII, Pope and Confessor – May 25

Communion

Comm. 6.

U es Pé-trus, * et su-per hanc pé-tram ædi-
fi-cábo Ecclé-si-am mé-am. *T.P.* Alle-lú-ia.