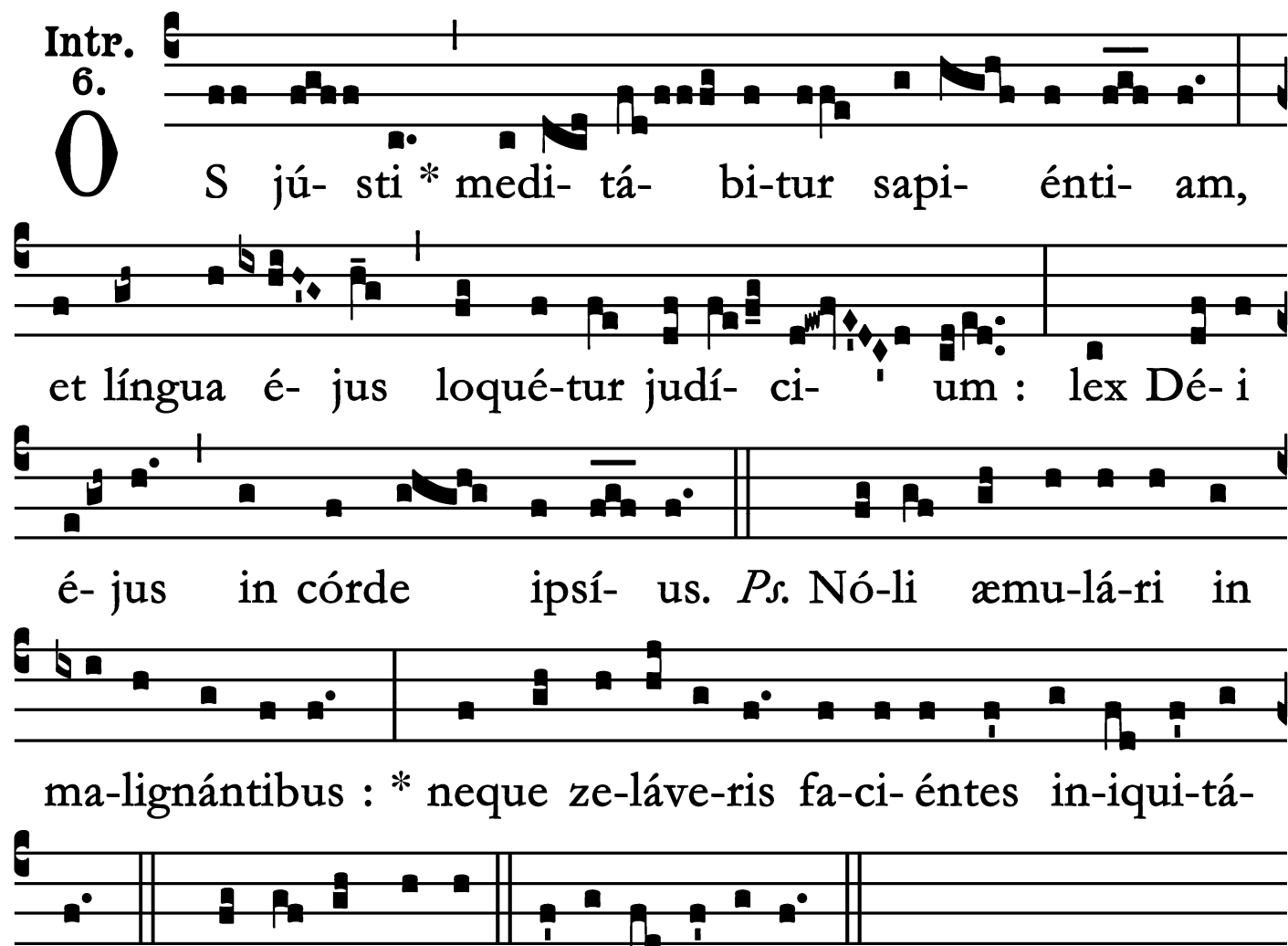


## Introit

Intr.  
6.



**O** S jú- sti \* medi- tá- bi-tur sapi- énti- am,  
et língua é- jus loqué-tur judí- ci- um : lex Dé- i  
é- jus in córde ipsí- us. *Ps.* Nó-li æmu-lá-ri in  
ma-lignántibus : \* neque ze-láve-ris fa-ci-éntes in-iqui-tá-  
tem. Gló-ri- a Pátri. E u o u a e.

St. Benedict, Abbot – March 21

*Gradual*

Grad.

4.

**D**

Domine, \* præ-venísti é- um in bene-di-

cti- óni- bus dulcé- di- nis : posu- í- sti in cá-

pi-te é-jus co-ró- nam de lápi-de pre-ti- ó-

so.  $\forall$ . Ví- tam

pé- ti- it, et tri- bu- í- sti é- i longi-tú-

di- nem di- é- rum in sæ- cu-lum

\* sæ- cu- li.

*Tract*

Tract.

8.

**B**

E-á- tus vir, \* qui tímet Dó- mi-

num : in man-dá- tis é- jus

cú- pit ni- mis. √. Pót- ens in térra

é-rit sémen é- jus : ge-ne- rá- ti-o re- ctó-

rum be- ne- di-cé-tur.


√. Gló- ri- a et di-ví-ti-æ in dómo é- jus : et

ju- stí- ti- a é- jus má- net \* in sáe- cu- lum

sáe- cu- li.

# Offertory

Offert. 6.



**D** Esidé- ri- um \* á- nimæ é- jus tribu- í- sti  
é- i, Dómine, et vo- luntá- te labi- órum é- jus  
non fraudá- sti é- um : posu- í- sti in cápi- te é-  
jus coró- nam de lá- pi- de pre- ti- ó-

so.

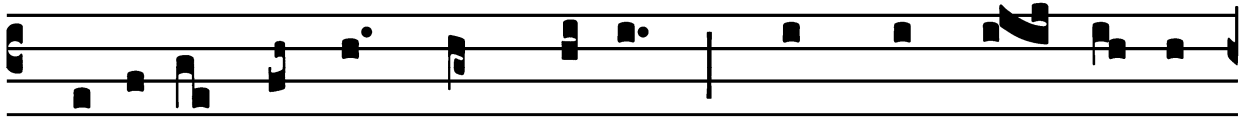
St. Benedict, Abbot – March 21

## *Communion*

Comm.

7.

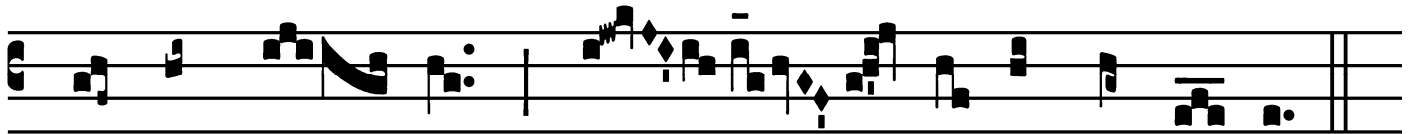
**F**



Idé-lis sérvus \* et prúdens, quem constí- tu- it



Dómi-nus super famí-li- am sú- am : ut det íl- lis



in témpo- re trí- ti- ci mensú- ram.