

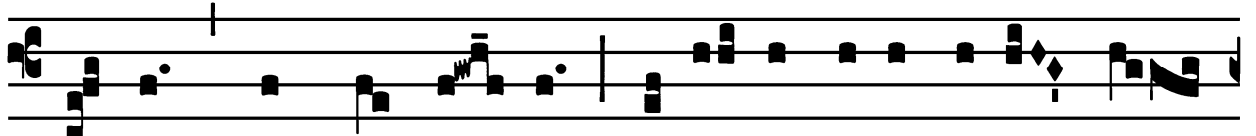
Dedication of the Church of Our Lady of the Snow - August 5

Introit

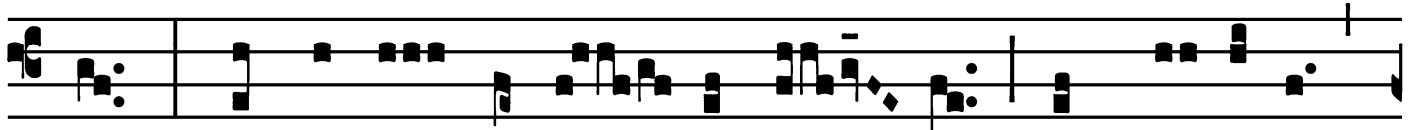
Intr.

2.

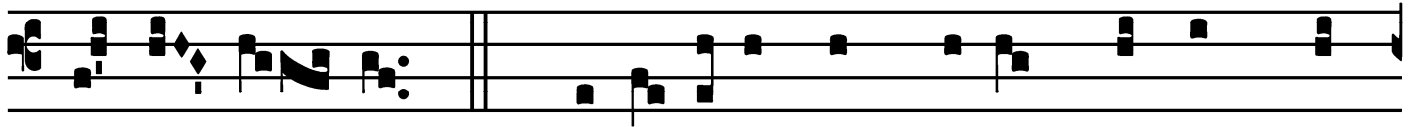
S



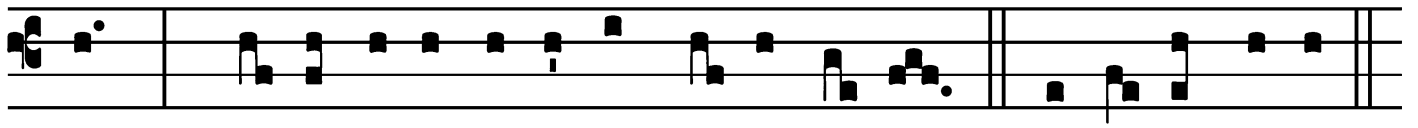
Alve * sáncta Pá- rens, ení- xa pu-érpera Ré-



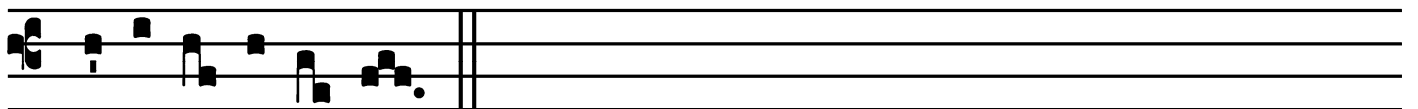
gem, qui cóe-lum terrám-que ré- git in sáe-cu-la



sæ-cu- ló- rum. *Ps.* Eructávit cor mé-um vérbum bó-



num : * dí-co égo ópe-ra mé- a ré-gi. Gló-ri- a Pátri.



E u o u a e.

Dedication of the Church of Our Lady of the Snow - August 5

Gradual

Grad.

4.

B

Enedícta * et ve-ne-rá-bi-lis es, Vírgo Ma-

rí-a : quæ si-ne táctu pudó-ris in-

vén-ta es má-ter Salva-tó-ris.

Ÿ. Vírgo

Dé-i Géni-

trix, quem tó-tus non cápít ór-bis, in

tú-a se cláu-sit ví-sce-ra * fá-ctus hó-mo.

Dedication of the Church of Our Lady of the Snow - August 5

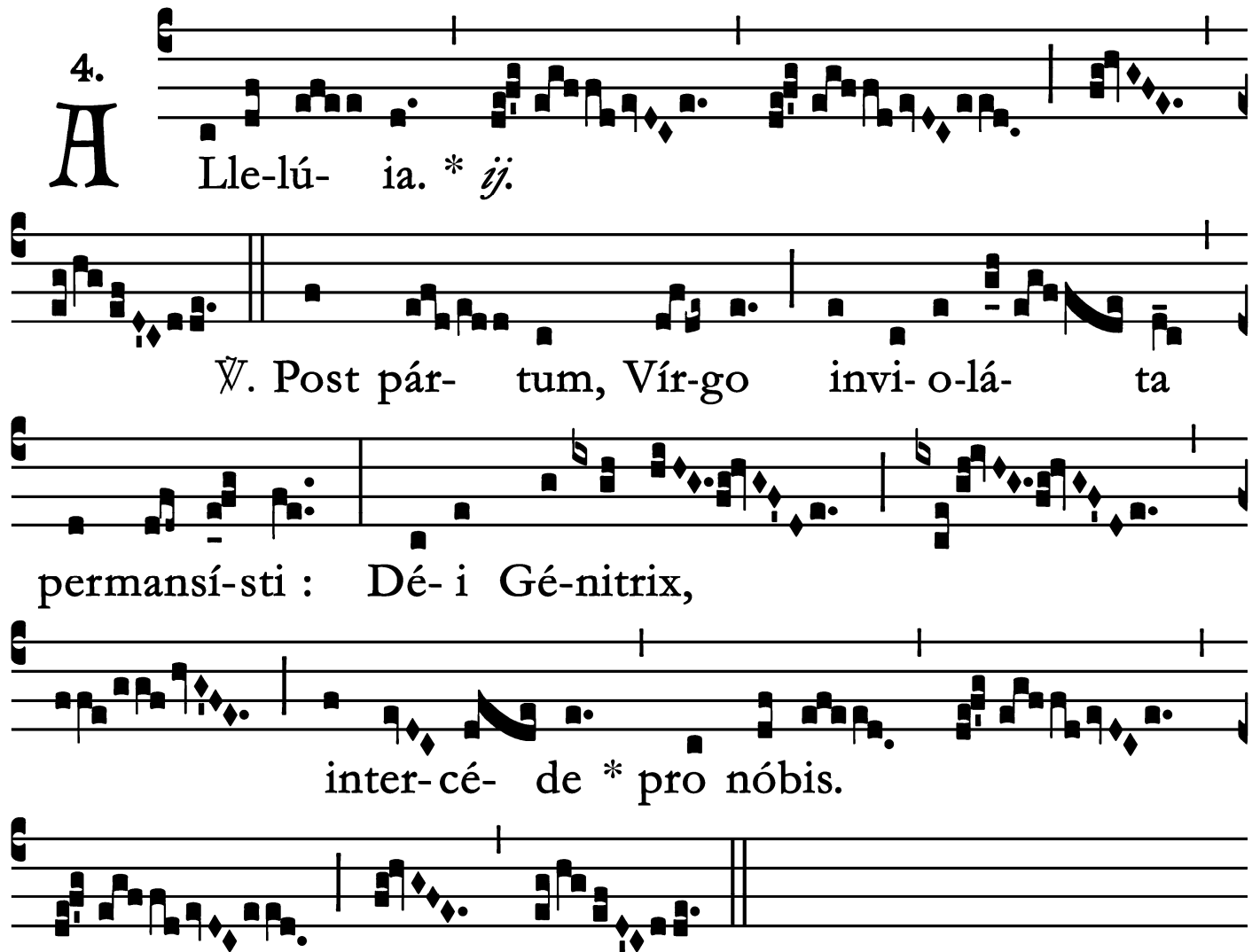
Alleluia

4.
A Lle-lú- ia. * *ij.*

Ÿ. Post pár- tum, Vír-go invi- o-lá- ta

permansí-sti : Dé- i Gé-nitrix,

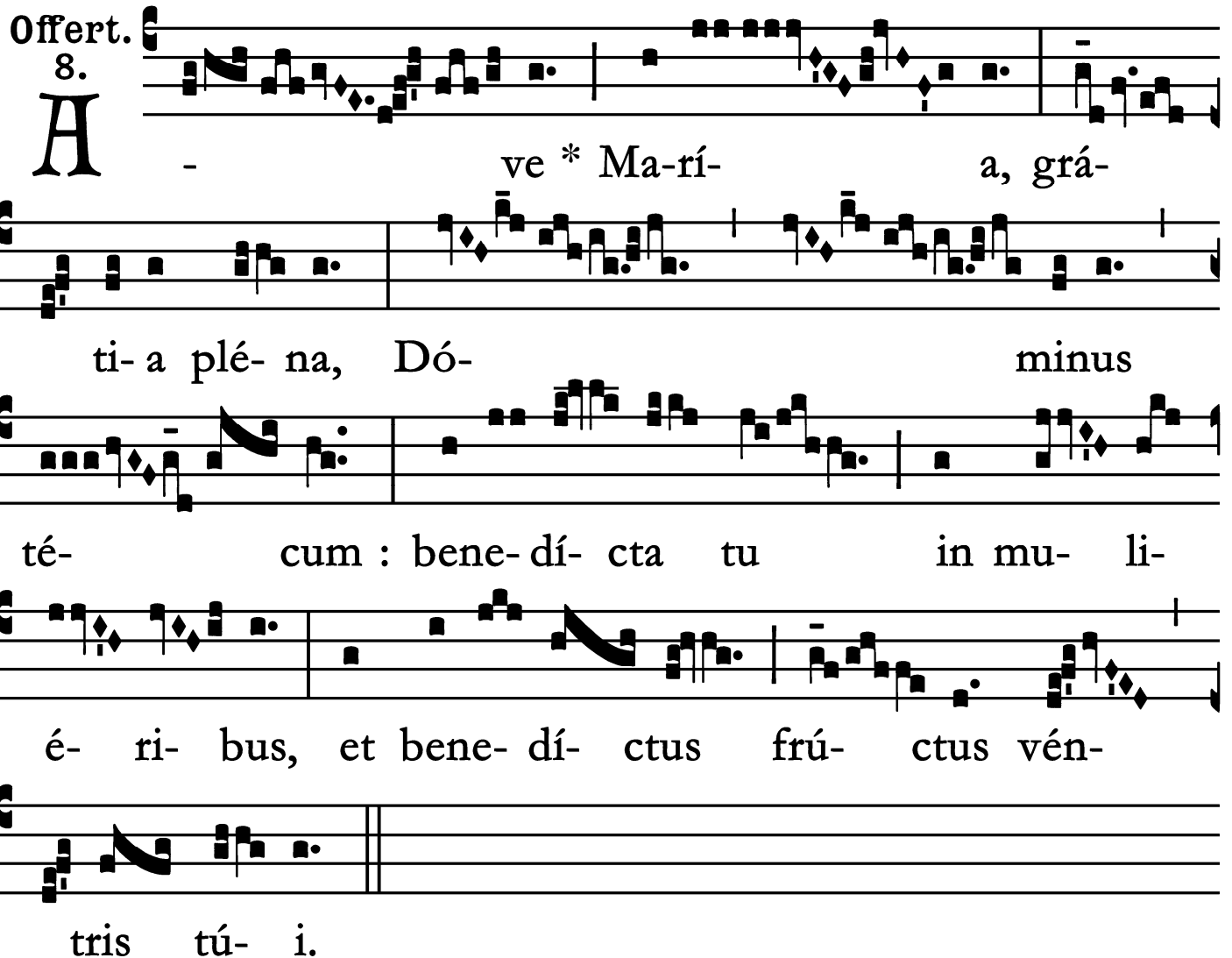
inter-cé- de * pro nóbis.

The image shows a musical score for an Alleluia. It consists of five systems of staves. Each system has a vocal line (soprano) and a piano accompaniment line. The lyrics are in Latin and are written below the vocal line. The first system starts with a large 'A' and the number '4.'. The lyrics are 'Lle-lú- ia. * ij.'. The second system has the lyrics 'Ÿ. Post pár- tum, Vír-go invi- o-lá- ta'. The third system has the lyrics 'permansí-sti : Dé- i Gé-nitrix,'. The fourth system has the lyrics 'inter-cé- de * pro nóbis.'. The fifth system is a continuation of the piano accompaniment and does not have lyrics.

Dedication of the Church of Our Lady of the Snow - August 5

Offertory

Offert. 8.

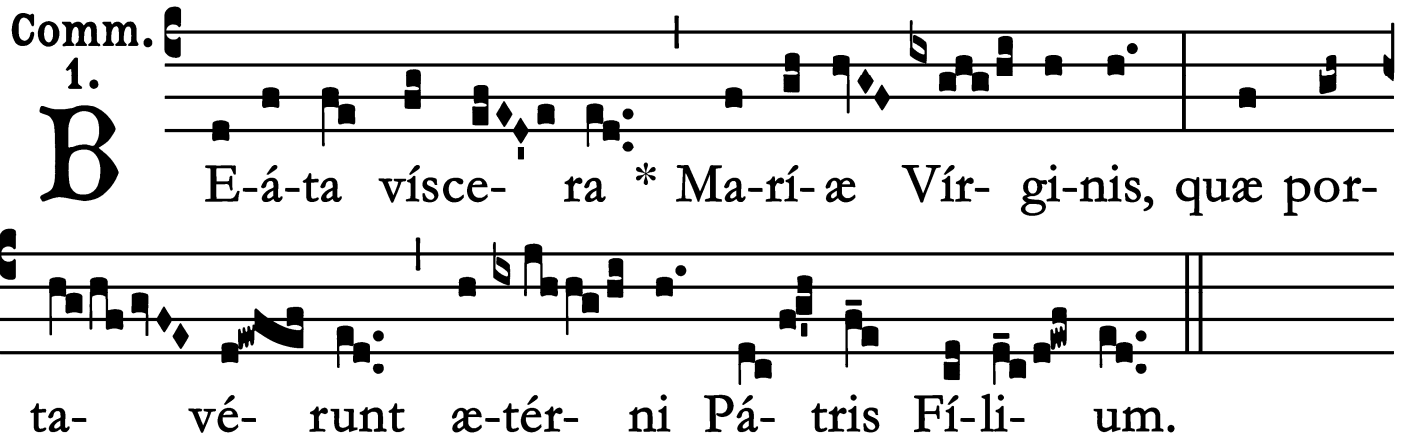


A - ve * Ma-rí-a, grá-ti-a plé-na, Dó-minus té-cum : bene-dí-cta tu in mu-li-é-ri-bus, et bene-dí-ctus frú-ctus vén-tris tú-i.

Dedication of the Church of Our Lady of the Snow - August 5

Communion

Comm. 1.



B E-á-ta vísce- ra * Ma-rí-æ Vír- gi-nis, quæ por-
ta- vé- runt æ-tér- ni Pá- tris Fí-li- um.