

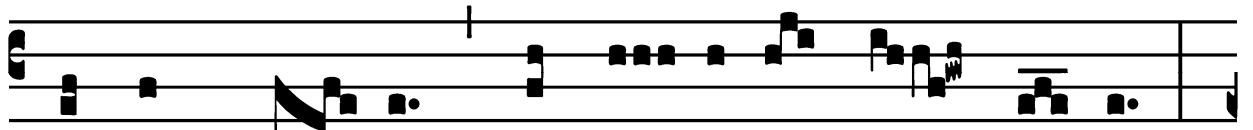
Assumption of the Blessed Virgin Mary - August 15

Introit

Intr.

7.

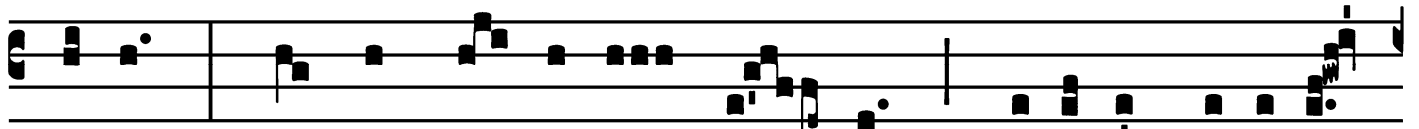
S



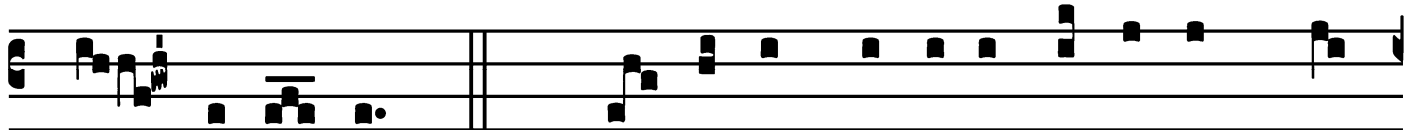
Ignum má- gnum * appá- ru- it in cóe- lo :



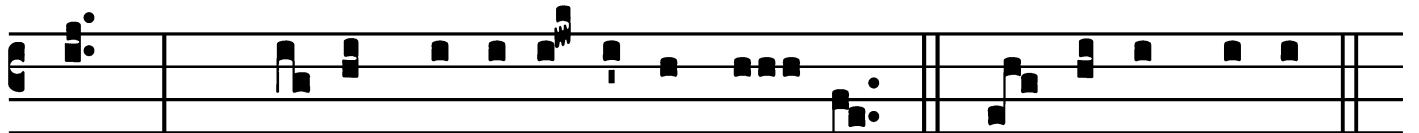
mú- li- er amícta só- le, et lú- na sub pé- dibus



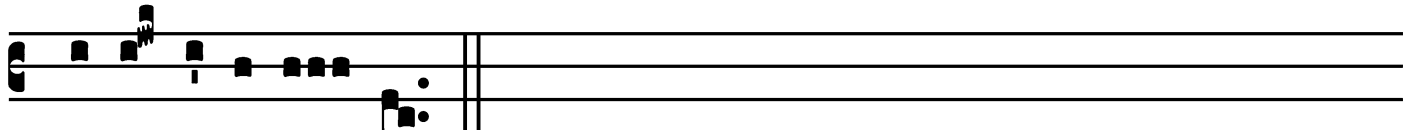
é- jus, et in cá- pi- te é- jus coróna stellárum



du- óde- cim. *Ps.* Can- tá- te Dómino cánti- cum nó-



vum : * qui- a mi- rabí- li- a fé- cit. Gló- ri- a Pátri.



E u o u a e.

Assumption of the Blessed Virgin Mary - August 15

Gradual

Grad.

7.

A

Udi, fí-li-a, * et ví-de,

et inclí-na áurem tú-am :

et concupí-scet rex

pulchri-tú-di-nem tú-am.

Ÿ. Tó-ta decó-ra

ingré-di-tur fí-li-a ré-gis, textúrae

áu-re-æ sunt amí-ctus *

é-jus.

Assumption of the Blessed Virgin Mary - August 15

Alleluia

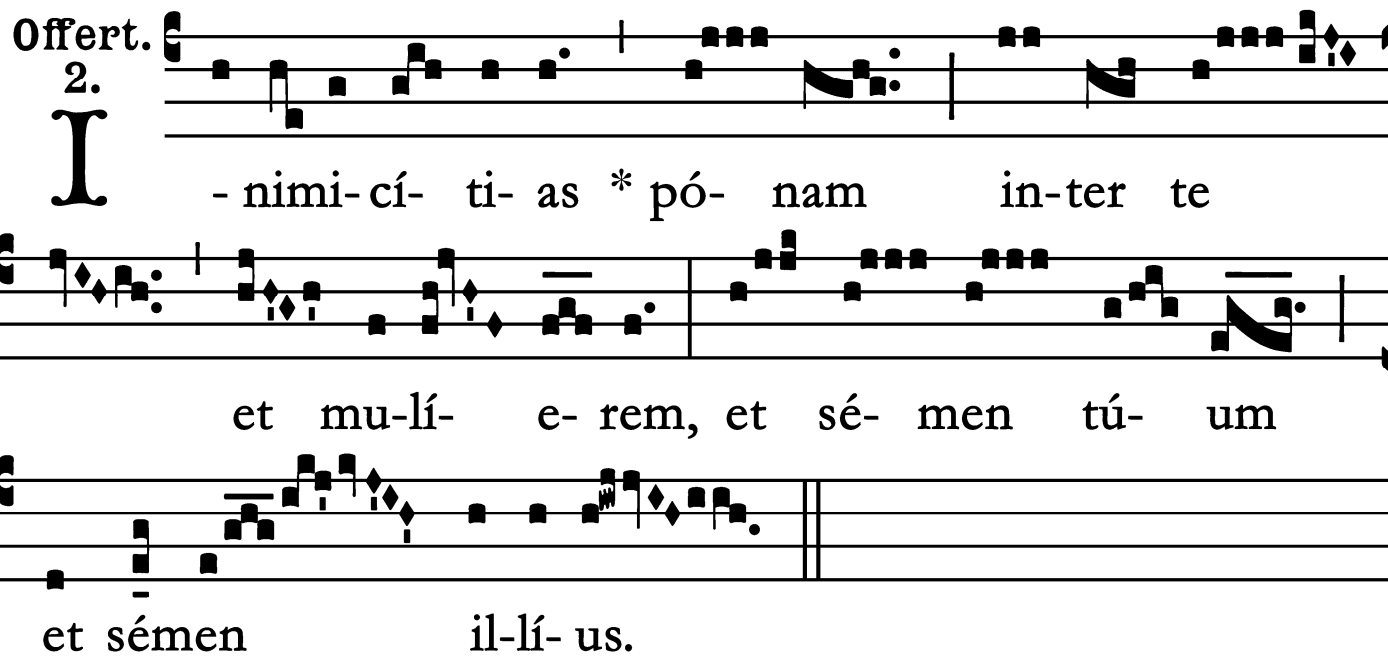
5.
A Lle- lú- ia. * *ij.*

∇. Assúmpta est Ma- rí- a in cóe- lum : gáu-
det exér- ci- tus * Ange-ló- rum.

Assumption of the Blessed Virgin Mary - August 15

Offertory

Offert. 2.



- nimi-cí- ti- as * pó- nam in-ter te

et mu-lí- e- rem, et sé- men tú- um

et sémen il-lí- us.

Assumption of the Blessed Virgin Mary - August 15

Communion

Comm. 6.
B E-á- tam me dí- cent * ó- mnes gene- ra- ti- ó-
nes, qui- a fé- cit mí- hi mágna qui pótens est.