

Introit

Intr.

5.

V

Erba mé-a * áuribus pér- cipe Dómi- ne, in-

tél- li-ge clamó- rem mé- um : inténde vó-

ci o-ra-ti-ó- nis mé- æ. *Ps.* Quóni- am ad te o-

rábo, Dómine : * mane exáudi- es vócem mé-am. Gló-ri-

a Pátri. E u o u a e.

Saturday of 3rd Week in Lent

Gradual

Grad.

1.

S

I ámbu- lem * in mé- di- o úmbræ

mór- tis, non timé- bo má- la :

quóni- am tu mé- cum es, Dómine.

∞. Vír- ga tú- a, et bá- cu-

lus tú- us, í- psa me * con-

so-lá- ta sunt.

Saturday of 3rd Week in Lent

Offertory

Offert. 8.

G Réssus mé-os * dí- ri- ge Dó- mi- ne secún-
dum e-ló- qui- um tú- um : ut non
domi-né-tur ómnis injustí-ti- a, Dó-
mi- ne.

Saturday of 3rd Week in Lent

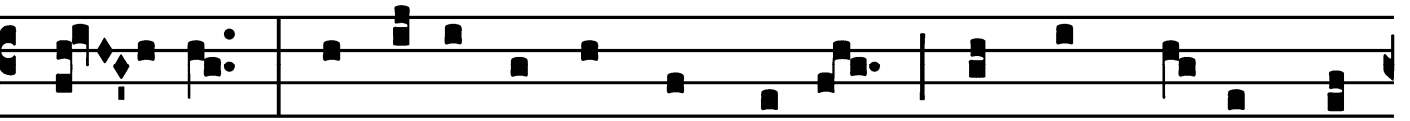
Communion

Comm.

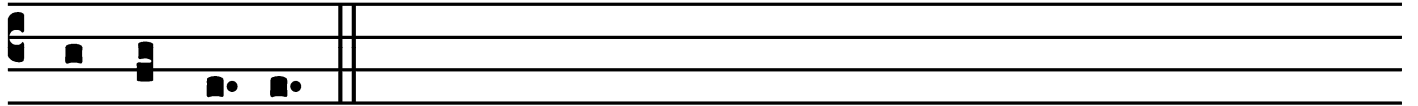
8.

Ω

Emo * te condemná-vit, mú-li-er? Némo, Dó-



mi- ne. Nec égo te condemnábo : jam ámpli- us nó-



li peccá-re.