

Friday of Ember Week in Lent

*Introit*

Intr.  
4.

**D** E ne- ces- si- tá- tibus mé- is \* é- ri- pe me

Dó- mi- ne : ví- de humi- li- tá- tem mé- am et labó-  
rem mé- um, et dimít- te ómni- a peccá- ta

mé- a. *Ps.* Ad te Dómine levávi á- nimam mé- am : \*

Dé- us mé- us in te confído, non e- rubéscam. Gló- ri- a Pa-  
tri. E u o u a e.

Friday of Ember Week in Lent

*Gradual*

Grad.

1.

**S**

Al- vum fac \* sér- vum tú- um, Dé-

us mé- us, spe-rántem in te.

∇. Auri-bus pér- ci-pe

Dó- mi-ne o-ra-ti-ónem \* mé- am.

Friday of Ember Week in Lent

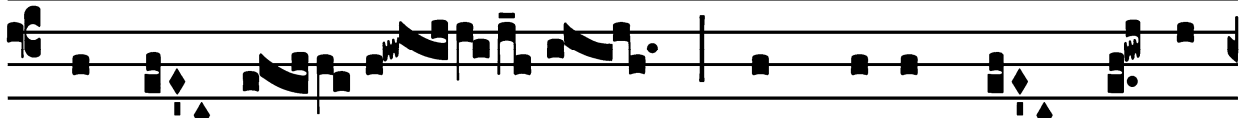
*Tract*

(Page 1 of 2)

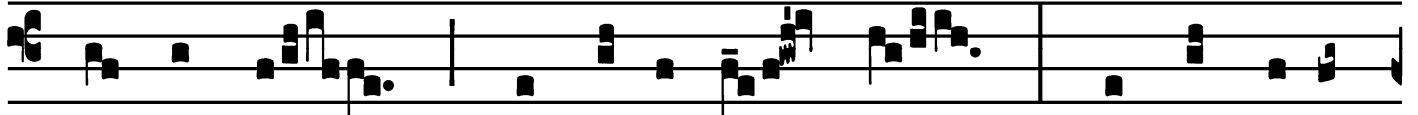
Tract.

2.

**D**



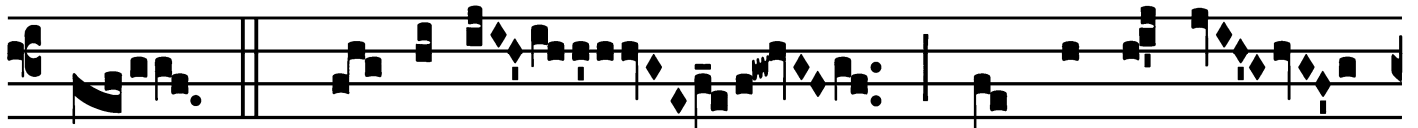
Omi- ne, \* non secúndum peccá-



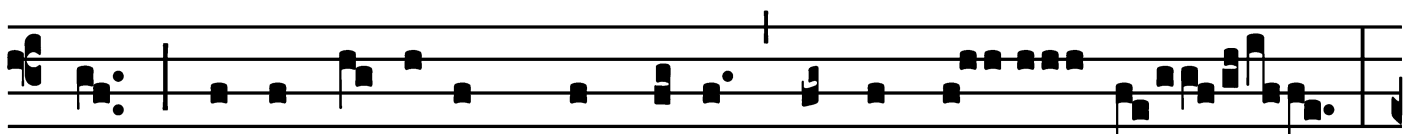
ta nóstra, quæ fé-cimus nos : neque secún-



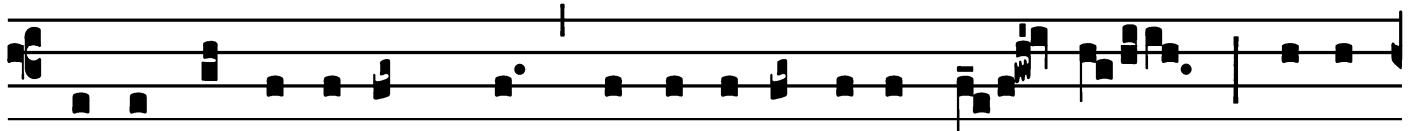
dum in-iqui-tá-tes nó- stras re-trí- bu- as nó- bis.



∞. Dó-mine, ne memí-ne-

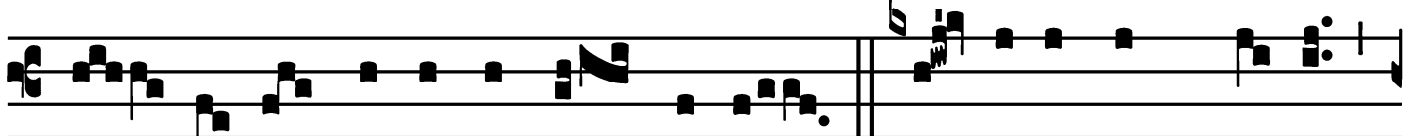


ris in-iqui- tatum nostrárum antiquá- rum :



ci-to antí-cipent nos mi-se-ricórdi-æ tú- æ, qui- a

*Here all kneel.*



páu- pe-res fácti súmus nimis. ∞. Adjuva nos, Dé- us

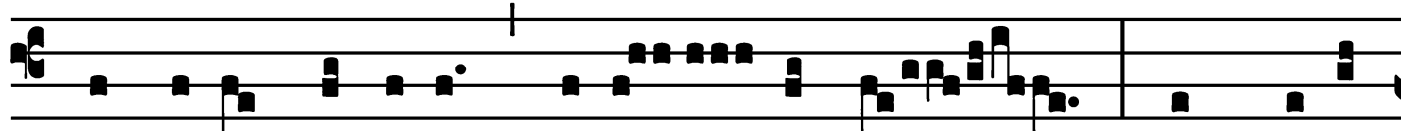
Friday of Ember Week in Lent

*Tract*

(Page 2 of 2)



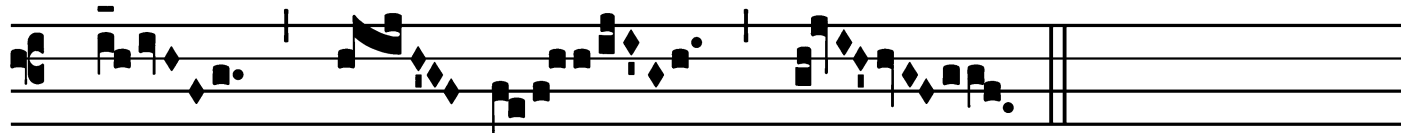
sa-lu-tá-ris nó-ster : et propter gló-ri-am nó-mi-



nis tú-i, Dómine, líbe-ra nos : et propí-



ti-us ésto peccá-tis nó-stris, pro-pter nó-men



\* tú-um.

Friday of Ember Week in Lent

*Offertory*

Offert.

5.

**B**

Ene-dic \* á- nima mé-a Dó-mi-no, et nó-li

ob- li-vísci ómnes retri-bu- ti- ó-nes é- jus : et

renovábi- tur, sic- ut á- qui- læ, ju-vén-

tus tú- a.

Friday of Ember Week in Lent

*Communion*

Comm. 4.

**E** - ru-bé- scant, \* et conturbén- tur ómnes in-i-  
mí- ci mé- i : avertántur retrór- sum, et e-rubé-scant  
valde ve-ló- ci- ter.