

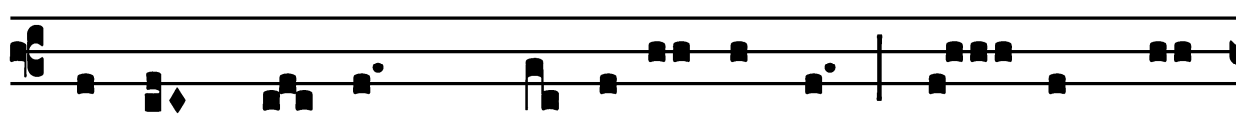
Common of a Virgin not a Martyr: Mass II

*Introit*

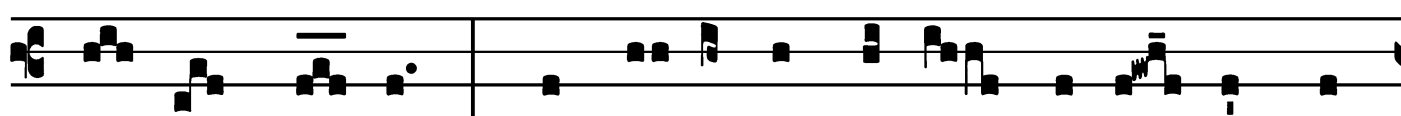
Intr.

2.

V



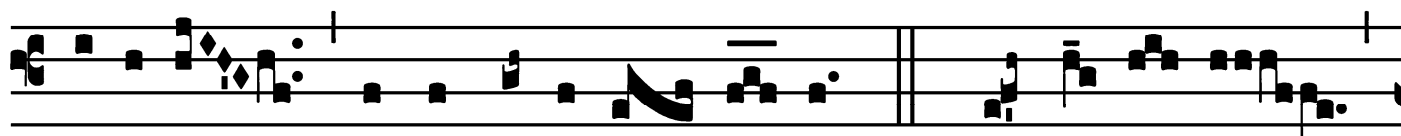
Ultum tú- um \* depreca- búntur ó- mnes dí-



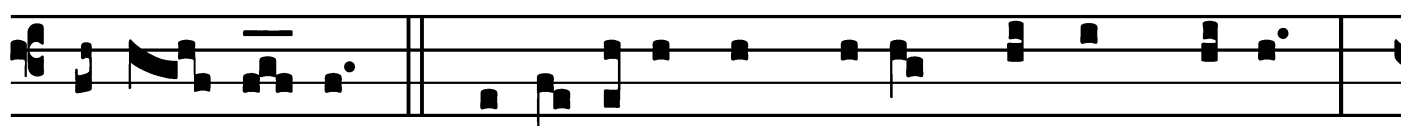
vi- tes plé- bis : addu- céntur ré- gi vír- gi- nes post



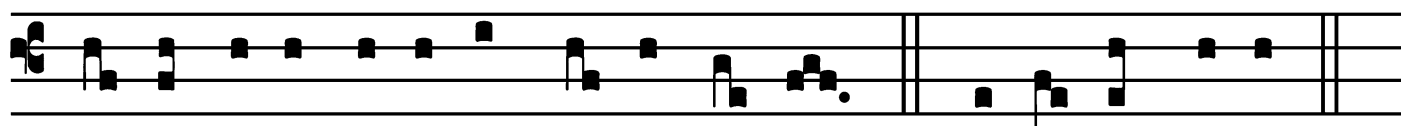
é- am : pró- ximæ é- jus addu- céntur tí- bi in læ-



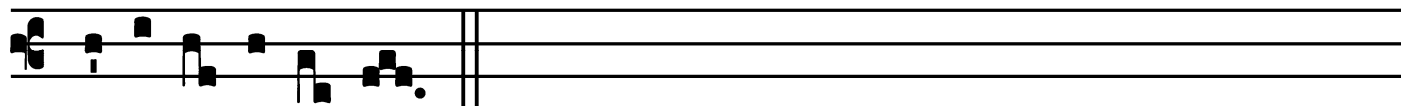
tí- ti- a et exsulta- ti- ó- ne. *T. P.* Al- le- lú- ia,



alle- lú- ia. *Ps.* Eructávit cor mé- um vérbum bónum : \*



dí- co égo ópe- ra mé- a ré- gi. Gló- ri- a Pátri.



E u o u a e.

Common of a Virgin not a Martyr: Mass II

*Gradual*

Grad.

1.

**C**

Oncu-pí-

vit \* rex

de- có-

rem

tú- um, quóni- am í-pse

est Dómi- nus

tú-

us.

∇. Audi fí-li- a,

et víde,

et inclí-

na \* áurem tú-

am.

Common of a Virgin not a Martyr: Mass II

*Alleluia*

4.  
**A** L-le- lú- ia. \* *ij.*

∇. Hæc est vír- go

sá-pi- ens, et ú- na

de nú-me-ro \* prudéntum.

Common of a Virgin not a Martyr: Mass II

*Second Alleluia*

(In Paschal Time)

4.  
**A** L-le- lú- ia. \*

∞. O quam púlchra est cásta ge-  
ne-rá-ti-o \* cum cla- ri-tá- te!

Common of a Virgin not a Martyr: Mass II

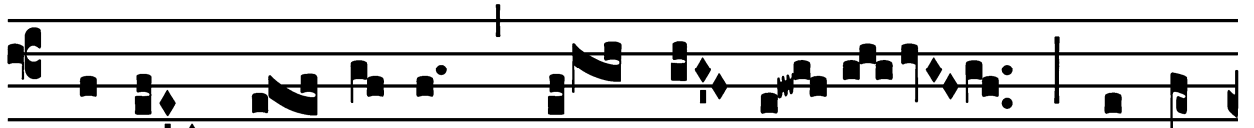
*Tract*

(Page 1 of 2)

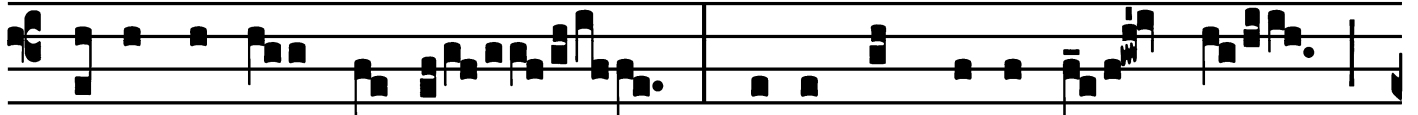
Tract.

2.

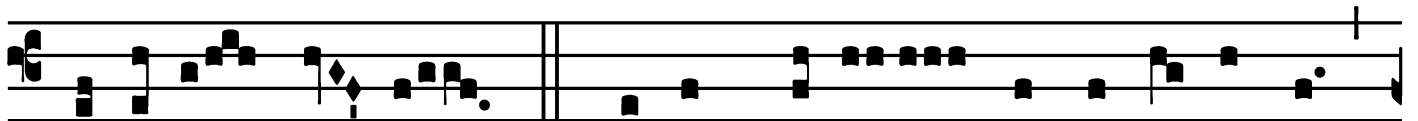
**A**



Udi fí- li- a, \* et ví- de, et in-



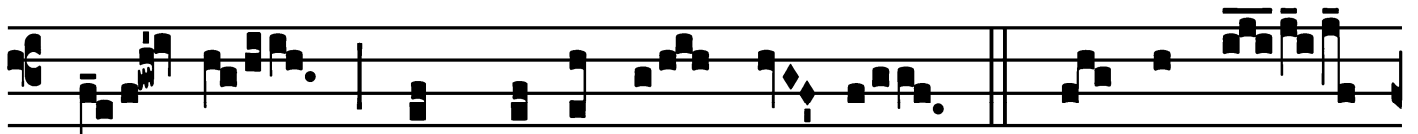
clína áurem tú- am : qui- a concupí- vit rex



spé- ci- em tú- am.  $\forall$ . Vúltum tú- um depre- ca- búntur



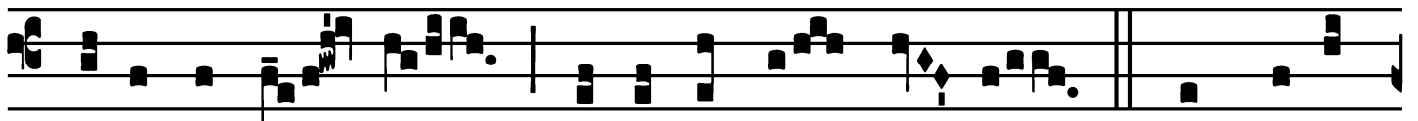
ó- mnes dí- vi- tes plé- bis : fí- li- æ



ré- gum in honó- re tú- o.  $\forall$ . Addu- cén-



tur ré- gi vír- gi- nes post é- am :

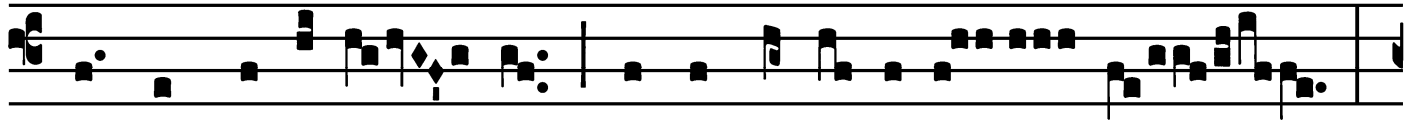


próxi- mæ é- jus affe- réntur tí- bi.  $\forall$ . Adducén-

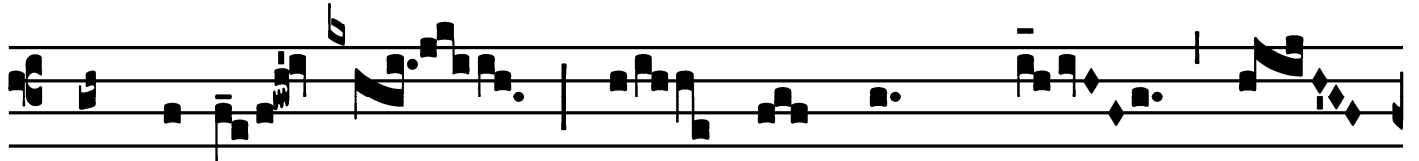
Common of a Virgin not a Martyr: Mass II

*Tract*

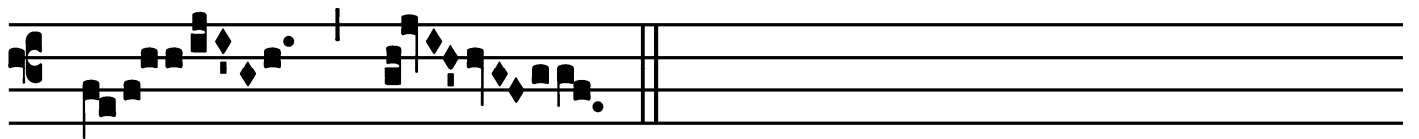
(Page 2 of 2)



tur in læ-tí-ti- a et exsulta-ti-ó- ne :



adducén- tur in témplum \* ré-



gis.

Common of a Virgin not a Martyr: Mass II

# Offertory

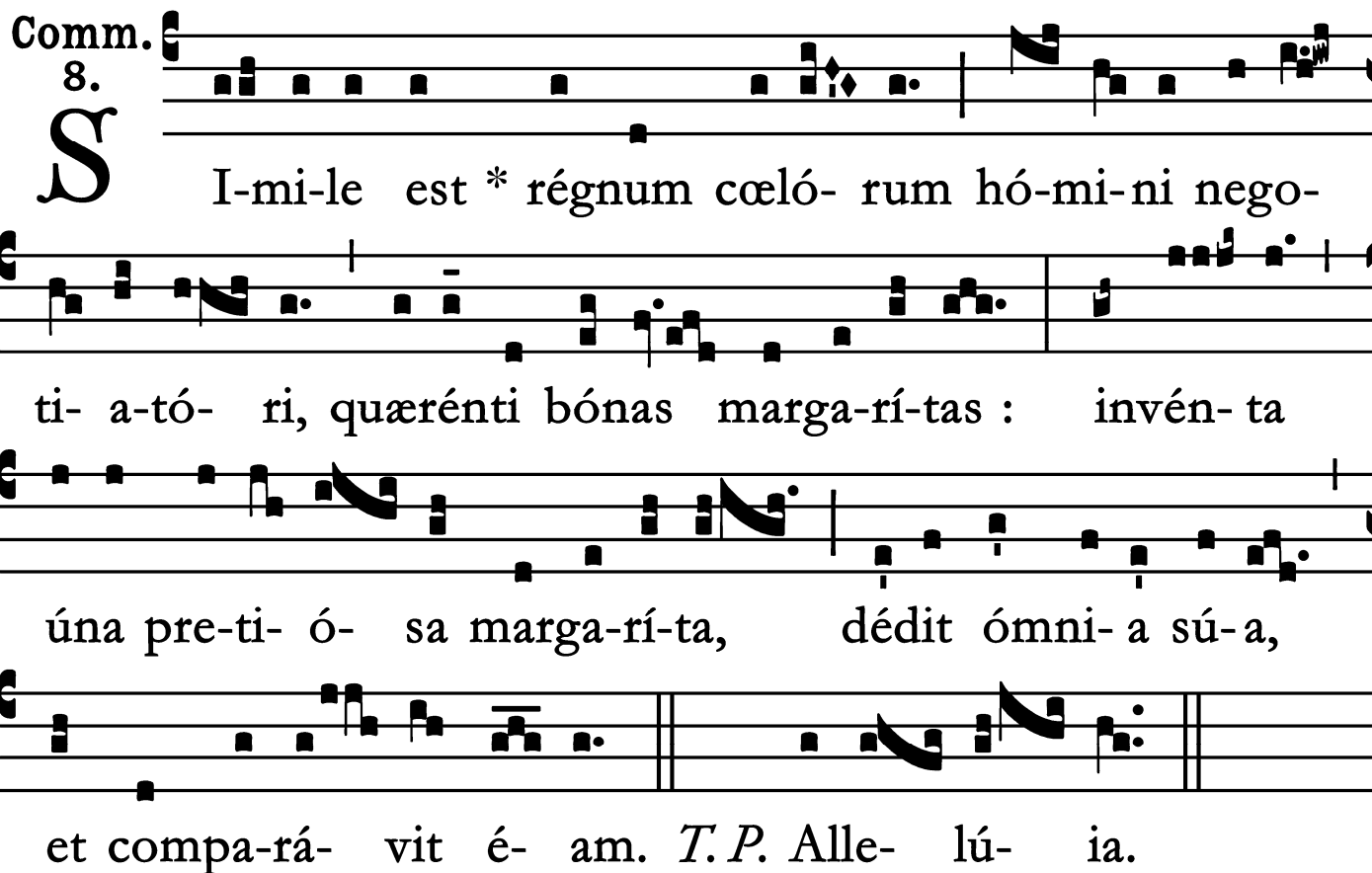
Offert. 4.

**A** F-fe-réntur \* ré-gi vír-gi-nes : pró-ximæ  
é-jus affe-rén-tur tí-bi in læ-tí-ti-a  
et exsulta-ti-ó-ne : addu-cén-tur in tém-  
plum ré-gi Dó-mi-no. *T. P.* Al-le-  
lú-ia.

Common of a Virgin not a Martyr: Mass II

*Communion*

Comm. 8.



**S** I-mi-le est \* régnum cœló- rum hó-mi-ni nego-  
ti- a-tó- ri, quærénti bónas marga-rí-tas : invén- ta  
úna pre-ti- ó- sa marga-rí-ta, dédit ómni- a sú-a,  
et compa-rá- vit é- am. *T. P.* Alle- lú- ia.

