

Common of Two or More Martyrs in Paschal Time

Introit

Intr.
3.
S

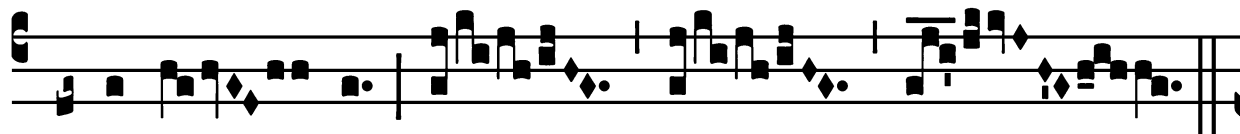
Ancti tú- i, * Dó- mi- ne, be- ne- dí- cent
te : gló- ri- am régni tú- i dí- cent, alle- lú- ia,
alle- lú- ia. *Ps.* Exaltábo te Dé- us mé- us Rex : *
et benedí- cam nómi- ni tú- o in sáecu- lum, et in sáecu-
lum sáecu- li. Gló- ri- a Pátri. E u o u a e.

Common of Two or More Martyrs in Paschal Time

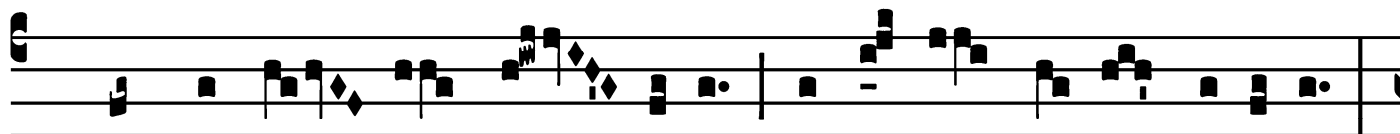
Alleluia

8.

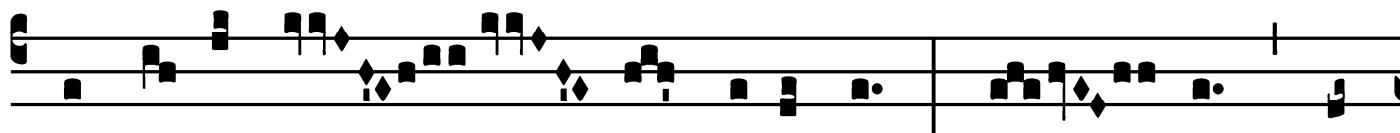
A



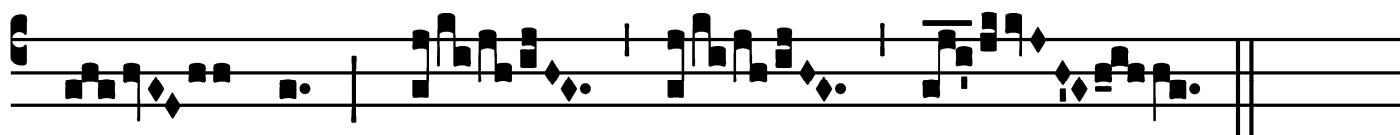
Lle-lú- ia. * *ij.*



∞. Sáncti tú- i, Dó- mine, flo-ré-bunt sic-ut lí-li-um :



et sic-ut ó- dor bálsami é- runt * an-



te te.

Common of Two or More Martyrs in Paschal Time

Second Alleluia

4.
A Lle- lú- ia. *

∇. Pre-ti- ó- sa in

conspé- ctu Dó- mi- ni, mors san-

ctó- rum * é- jus.

Common of Two or More Martyrs in Paschal Time

Offertory

Offert. 1.

L Æ-tá- mi- ni * in Dó- mino, et exsul-
tá- te jú- sti : et glo- ri- ámi-
ni ó-mnes ré- cti cór- de, alle-
lú- ia, alle-lú- ia.

Common of Two or More Martyrs in Paschal Time

Communion

Comm. 1.



G Audé- te * jú- sti in Dó- mi- no, alle-
lú- ia : ré- ctos dé- cet collau- dá-ti- o,
al-le- lú- ia.

