

Common of Two or More Martyrs outside Paschal Time: Mass I

Introit

Intr. 4.

I Ntret * in conspéctu tú- o, Dó- mine, gé-
mi-tus compedi- tó- rum, rédde vi- cí- nis nóstris sé- ptu-
plum in sí- nu e- ó- rum : víndi- ca sán- guinem san-
ctó- rum tu- ó- rum, qui ef- fú- sus est. *Ps.* Dé- us
venérunt géntes in hære- di- tá- tem tú- am, * pol- lu- érunt
témplum sánctum tú- um : posu- érunt Jerúsa- lem in pomó-
rum custódi- am. Gló- ri- a Pátri. E u o u a e.

Common of Two or More Martyrs outside Paschal Time: Mass I

Gradual

(Page 1 of 2)

Grad.

1.

G

Lo-ri- ósus

* Dé-

us

in sán-

ctis,

mi- rá-bi-

lis

in ma-je- stá- te,

fá- ci- ens

pro- dí- gi- a.

∇. Déxte-ra tú-a,

Dó-

mi- ne,

glo-ri- ficá- ta

est in vir- tú-

te :

déxte-ra mánus tú-

a

Common of Two or More Martyrs outside Paschal Time: Mass I

Gradual

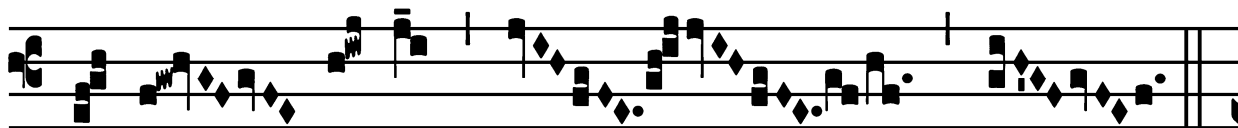
(Page 2 of 2)

confré- git * in-imí- cos.

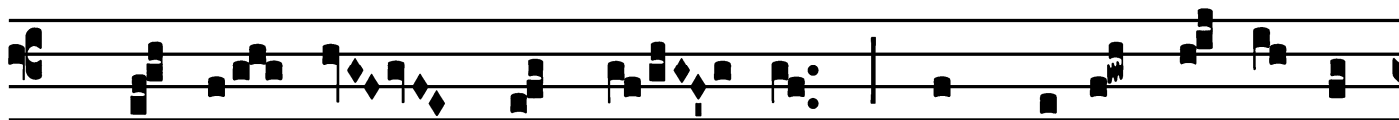
Common of Two or More Martyrs outside Paschal Time: Mass I

Alleluia

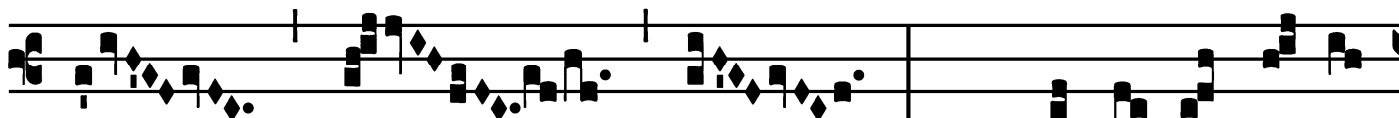
2.
A



L-le- lú- ia. * *ij.*

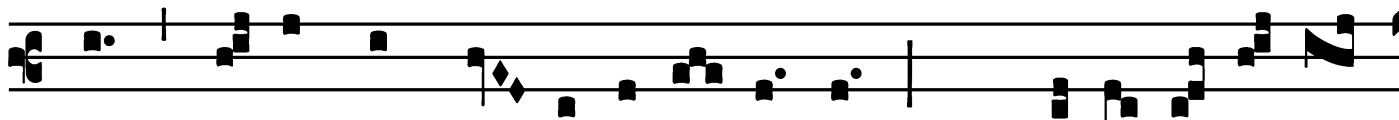


Ÿ. Córpo- ra sanctó- rum in páce se-púl-ta

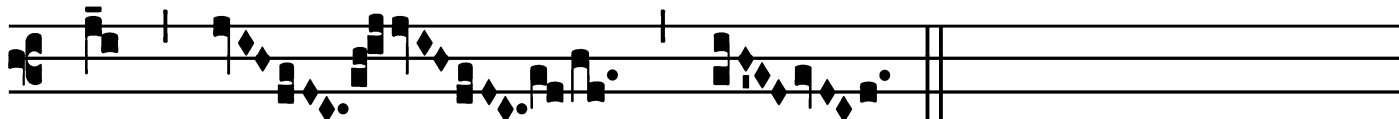


sunt,

et nómi-na e- ó-



rum ví-vent in ge- ne-ra-ti- ó-ne * et gene-ra-ti- ó-



nem.

Common of Two or More Martyrs outside Paschal Time: Mass I

Tract

Tract.

8.

Q

UI sémi- nant * in lá- cri- mis, in

gáu- di- o mé- tent. *∞*. E-úntes

í- bant, et flé- bant, mitténtes sé-

mi-na sú- a. *∞*. Veni- éntes au-

tem vé- ni- ent cum exsul- ta-

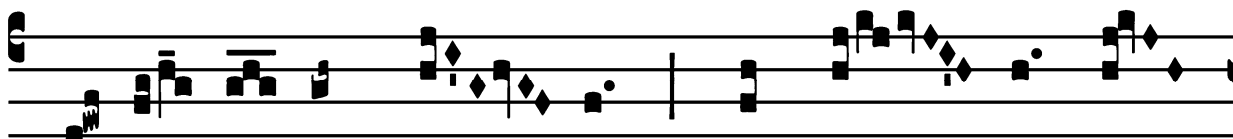
ti- ó- ne, portántes * ma- ní- pu- los sú-

OS.

Common of Two or More Martyrs outside Paschal Time: Mass I

Offertory

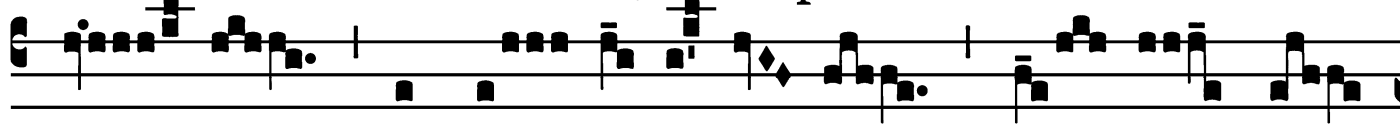
Offert.
8.



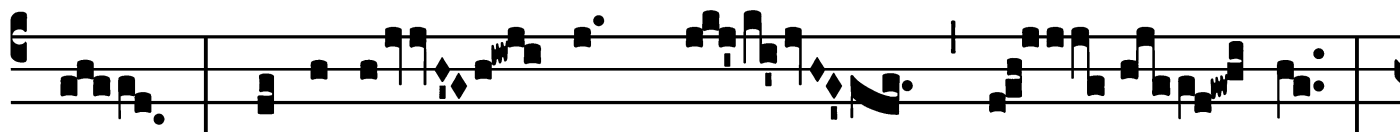
I-rá- bi- lis Dé- us * in sán- ctis sú-



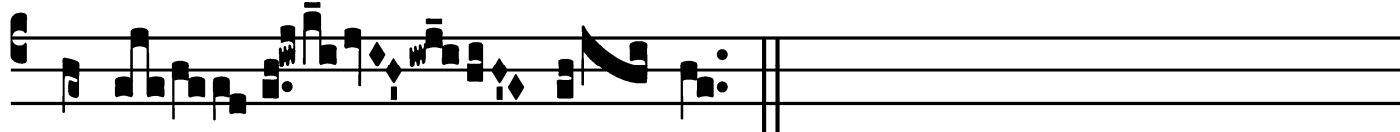
is : Dé-us Is- ra- òl, ípse dá- bit vir-



tú- tem, et for- ti- tú- di- nem plé- bi sú-



æ : benedí- ctus Dé- us,



alle- lú- ia.

Common of Two or More Martyrs outside Paschal Time: Mass I

Communion

Comm. 1.

E T si co- ram homí- nibus * tormén-ta pássi
sunt, Dé-us tentá- vit é- os : tamquam áu- rum in
forná- ce probá- vit é- os, et qua-si ho- locáu-
sta accé-pit é- os.

