

Common of a Martyr not a Bishop: Mass II

Introit

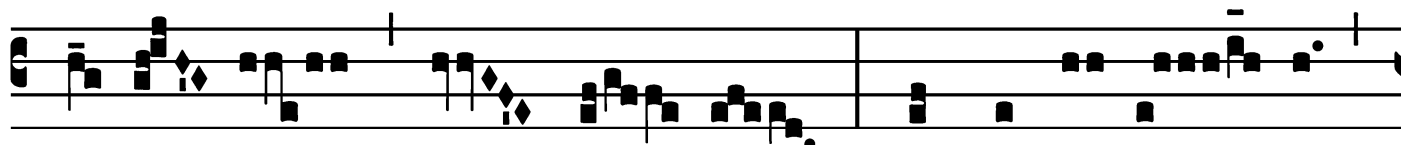
Intr.

8.

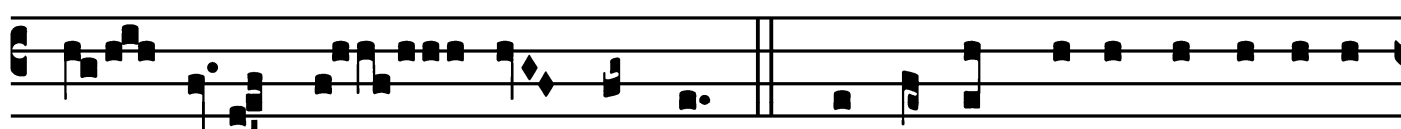
L



Æ-tá- bi- tur * jú- stus in Dó-mi- no, et



spe-rá- bit in é- o : et lauda-bún- tur



ó-mnes ré- cti córde. *Ps.* Exáudi Dé-us o-ra-ti-ó-



nem mé- am cum déprecor : * a timó-re in-imí-ci é-ri-



pe á- nimam mé- am. Gló-ri- a Pátri. E u o u a e.

Common of a Martyr not a Bishop: Mass II

Gradual

Grad.

5.

U

U- stus * cum ce-cíde-rit, non col-li- dé-

tur : qui- a Dó- mi- nus suppó- nit má-

num sú- am.

∇. Tóta dí- e mise-rétur, et

cómmodat :

et sémen é-

jus

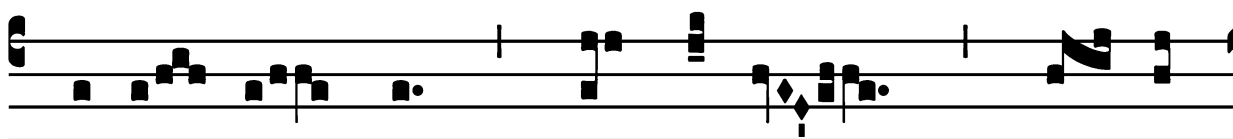
in benedicti-ó- ne * é- rit.

Common of a Martyr not a Bishop: Mass II

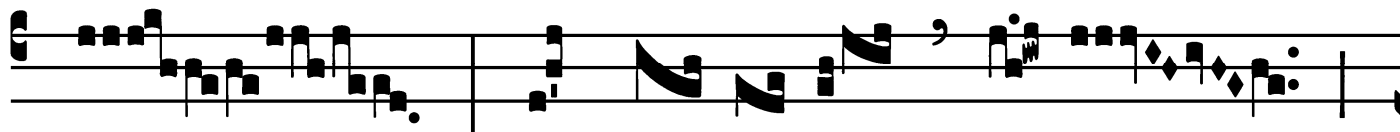
Tract

Tract.
8.

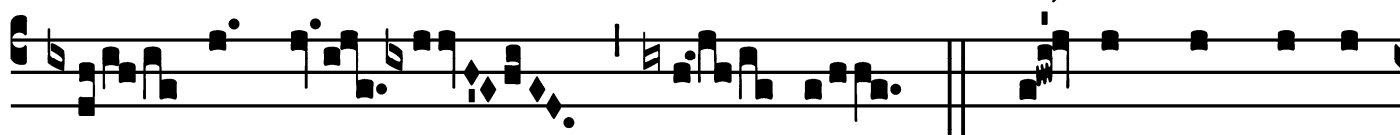
B



E-á- tus vir, * qui tímet Dó- mi-



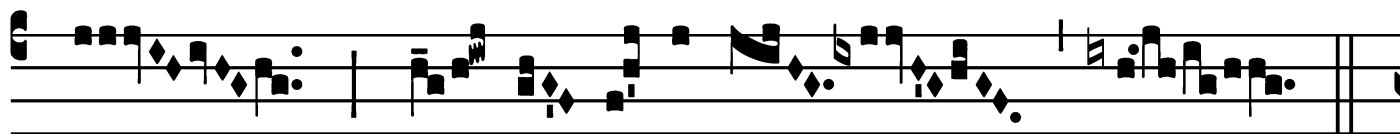
num : in man-dá- tis é- jus



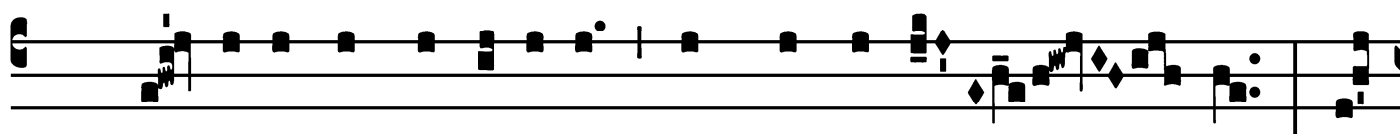
cú- pit ni- mis. ∇ . Pót- ens in térra



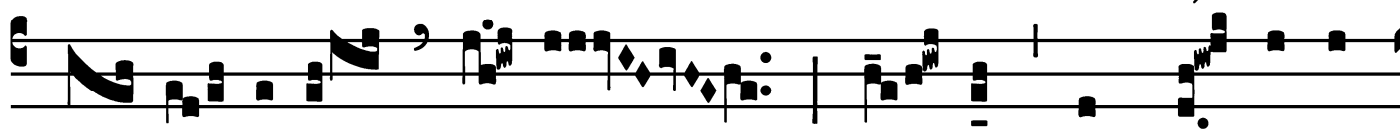
é-rit sémen é- jus : ge-ne- rá- ti-o re- ctó-



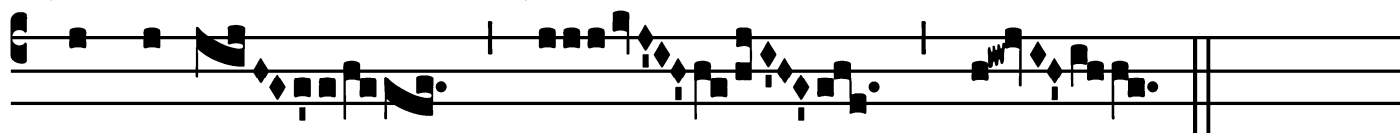
rum be- ne- di-cé-tur.



∇ . Gló- ri- a et di-ví-ti-æ in dómo é- jus : et



ju- stí- ti- a é- jus má- net * in sá- cu- lum



sá- cu- li.

Common of a Martyr not a Bishop: Mass II

Offertory

Offert.

8.

P

Osu- í- sti * Dó- mi- ne in cá-

pi-te é-jus co-ró- nam de lá-pi-

de pre-ti-ó- so : ví-tam pé-

ti- it a te, tribu- í- sti é- i, al- le-

lú- ia.

Common of a Martyr not a Bishop: Mass II

Communion

Comm.
5.



Q UI mí-hi mí-nístrat, * me sequá- tur : et ubi
é- go sum, illic et míní-ster mé-
us é- rit.

